

A short update on occasional offices

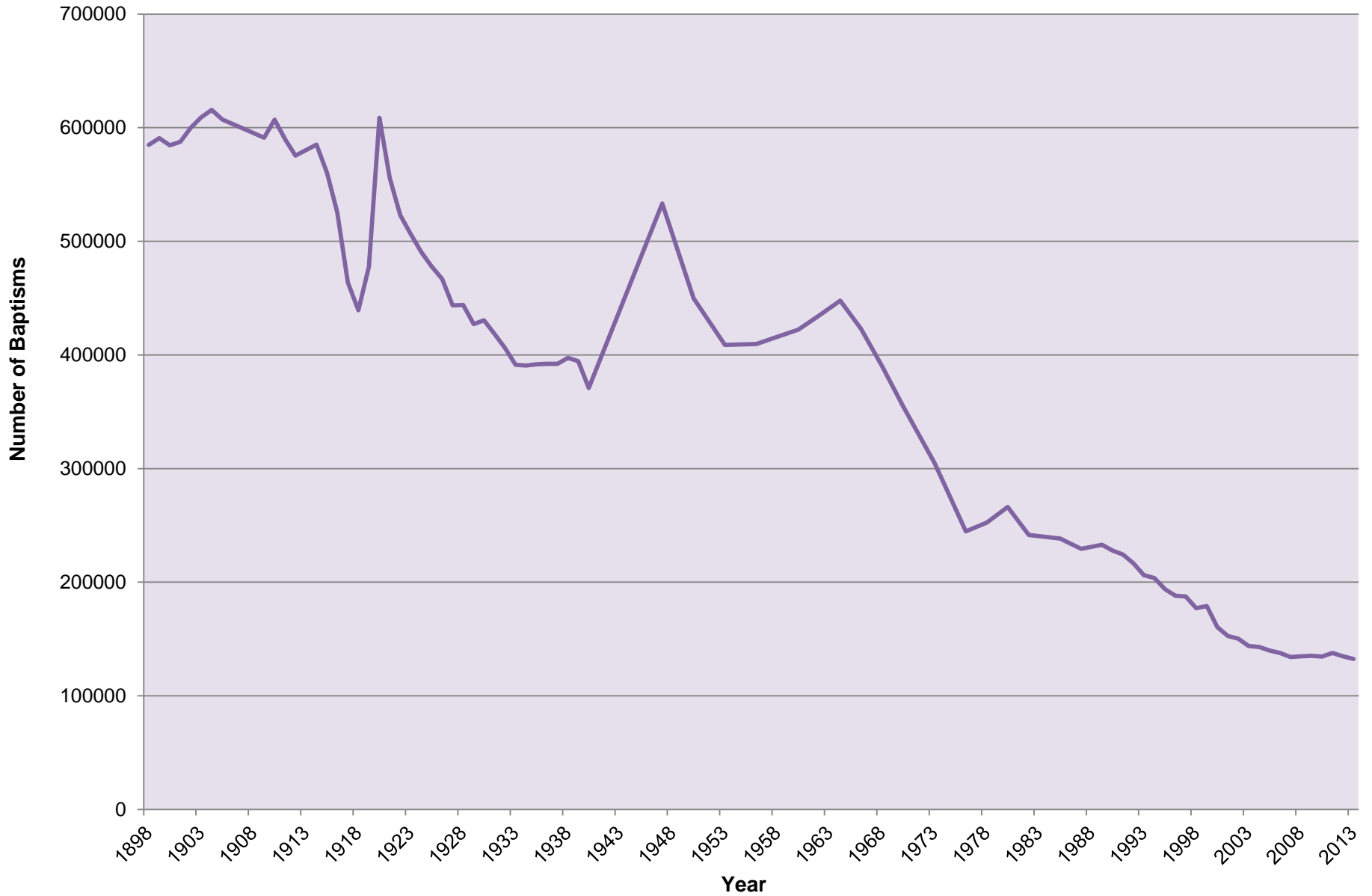
Dr Bev Botting

Head of Research and Statistics

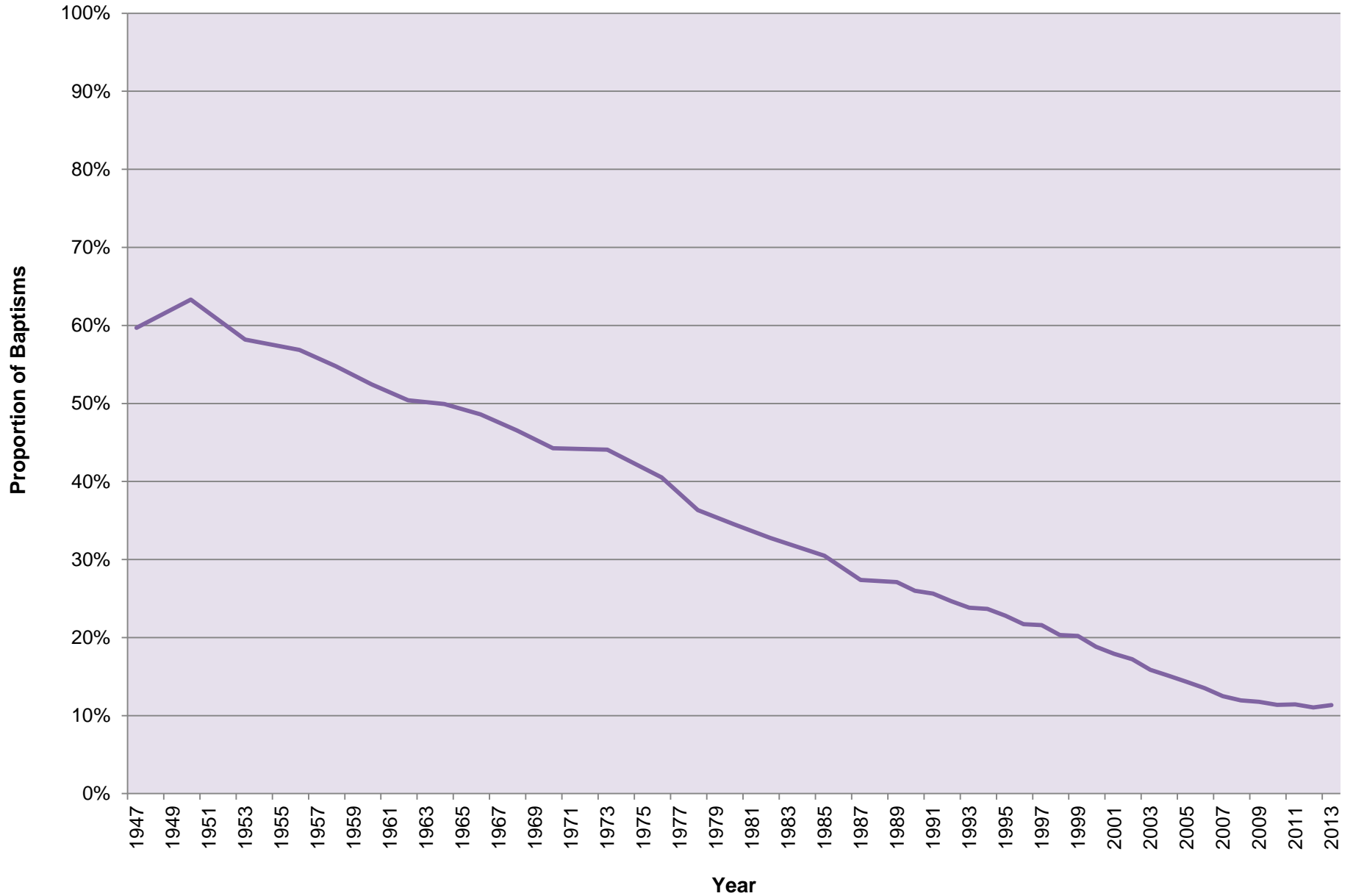
Archbishops' Council



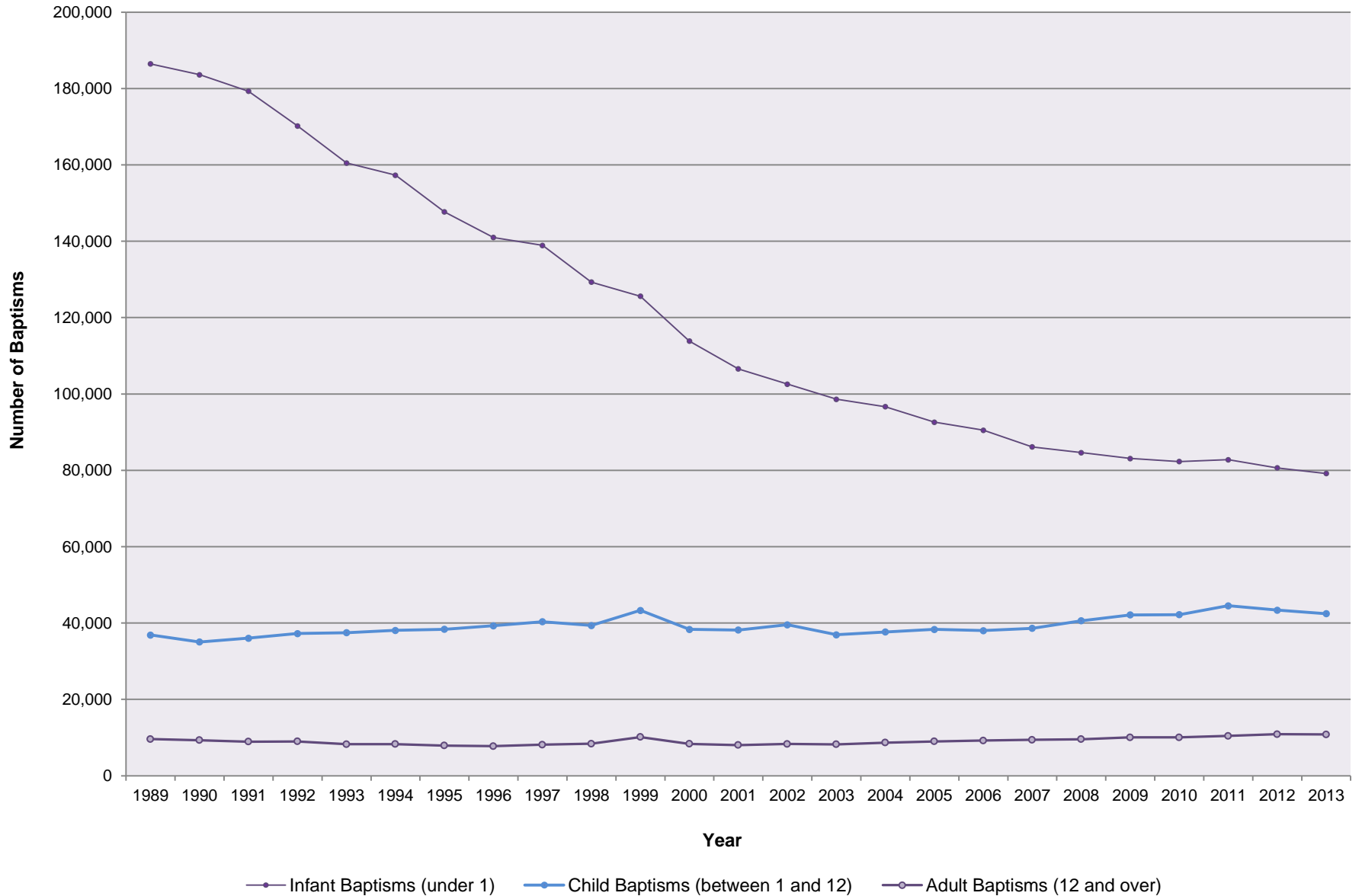
Church of England Baptisms 1898 - 2013



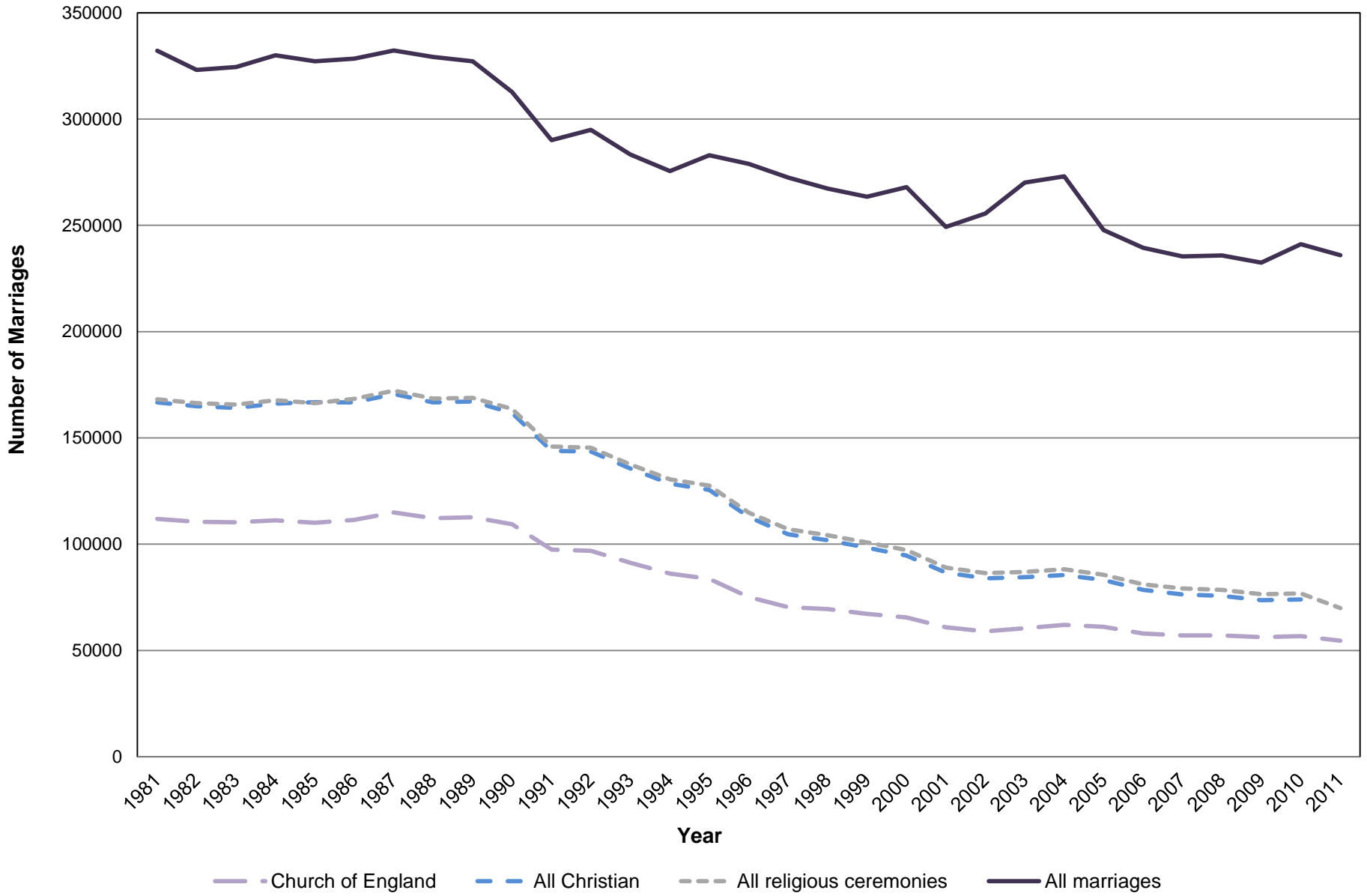
Church of England Infant Baptisms as a Proportion of Live Births 1947 - 2013



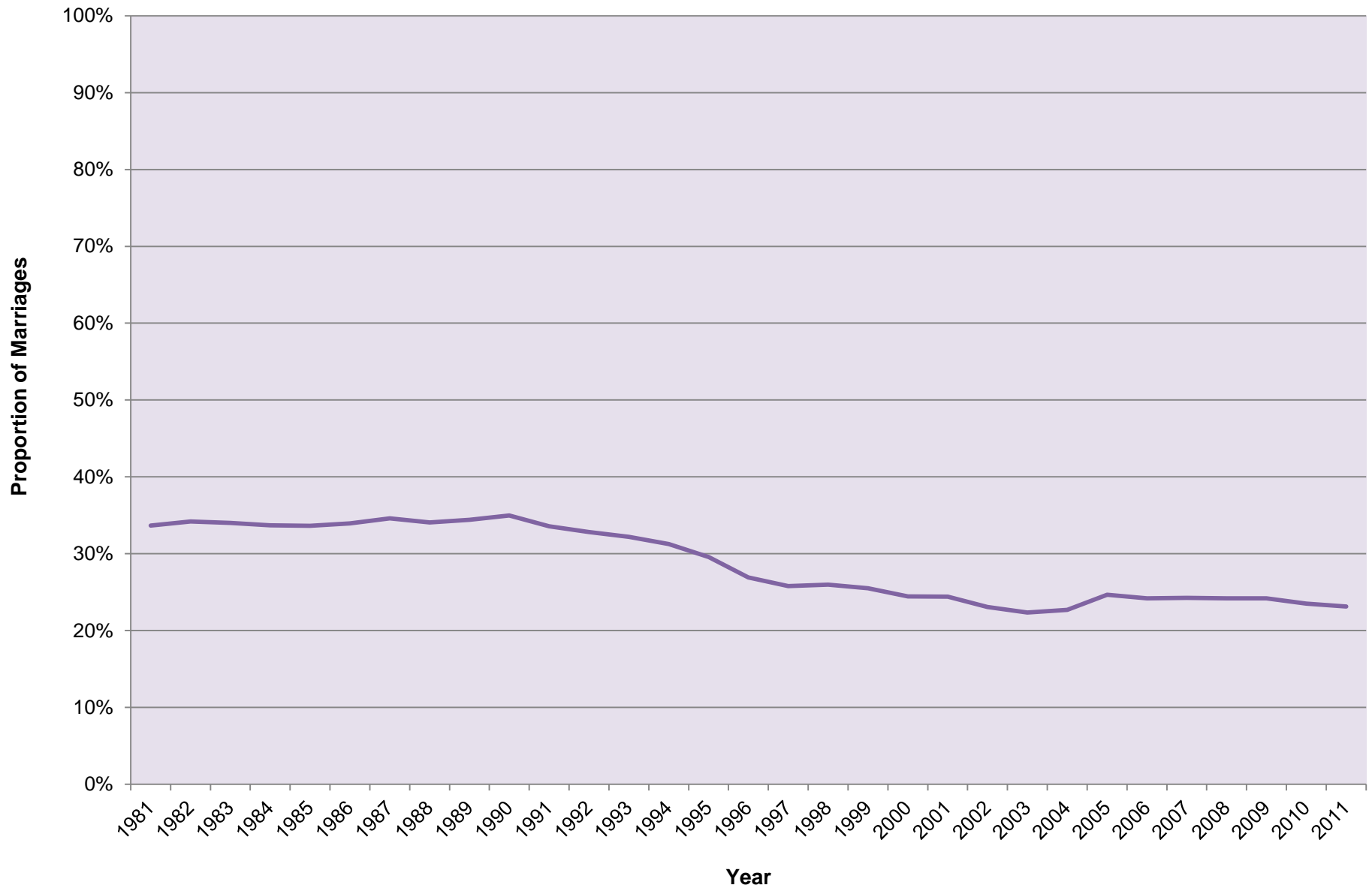
Church of England Baptisms by Age Category 1989 - 2013



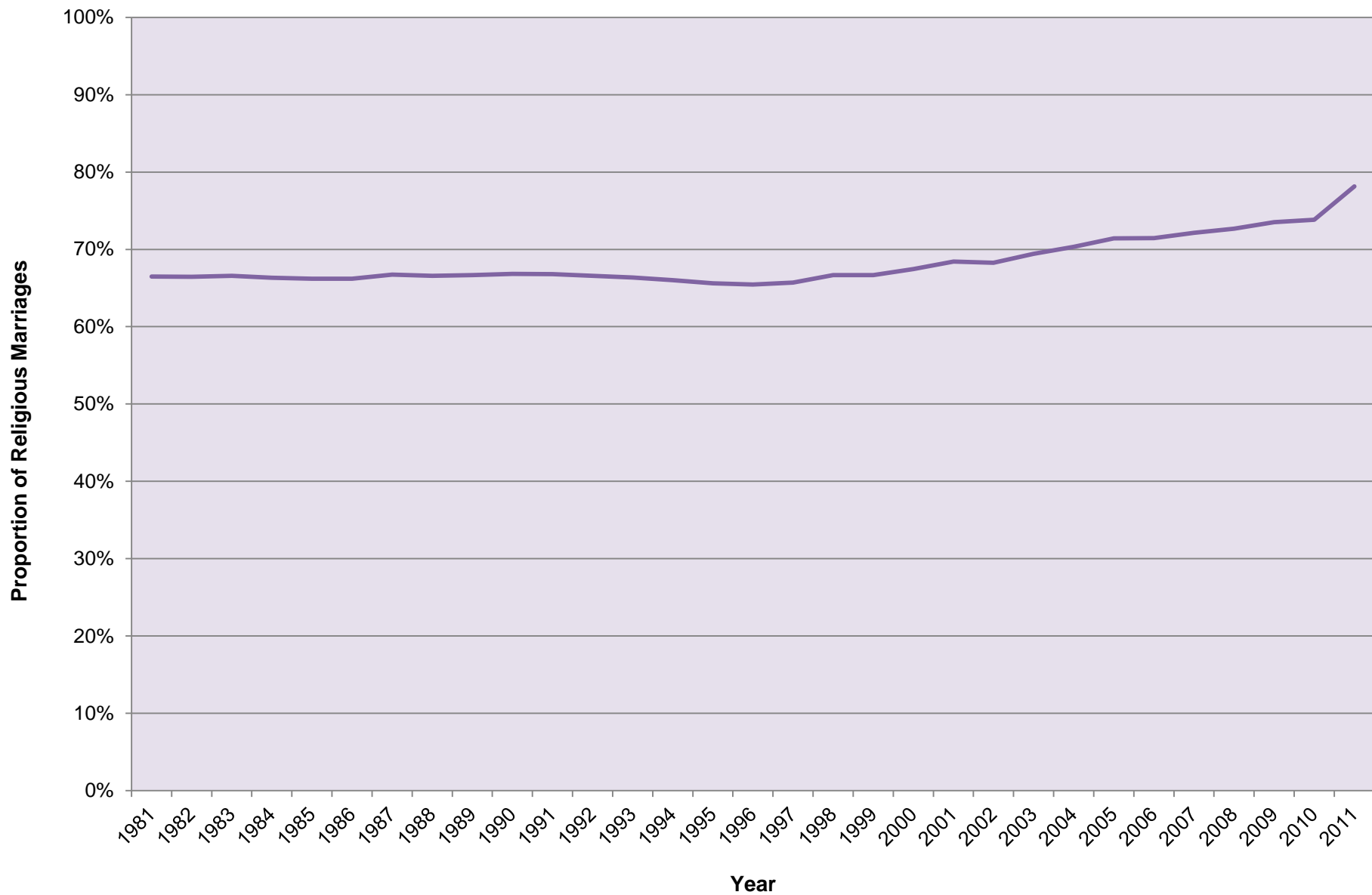
Religious and Total Marriage Figures in England 1981 - 2011 (excluding Isle of Man and Channel Islands)



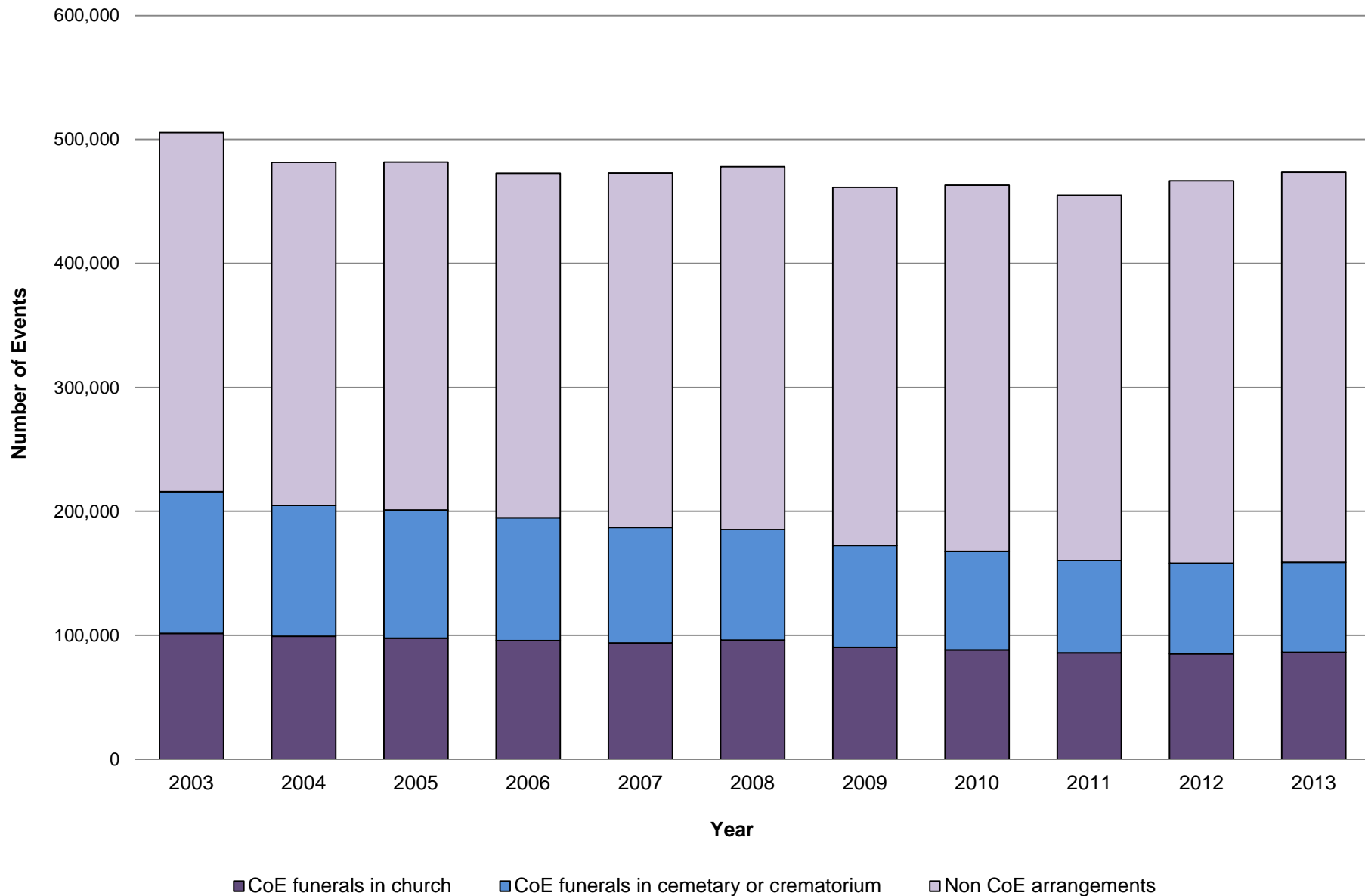
Church of England Marriages as a Proportion of all Marriages 1981 - 2011



Church of England Marriages as a Proportion of Religious Marriages 1981 - 2011



All Church of England (CoE) Funerals and other Arrangements 2003 - 2013



Notes

- These statistics are derived from the annual Statistics for Mission returns provided by Churches. In 2013 80% of churches provided a return. Where churches did not provide an annual return, their data were estimated based on their data from previous years.
- Occasional Offices have been the subject of research funded by the Archbishops' Council. The weddings project was tasked to develop and support the Church of England's wedding ministry. A report was published in July 2012 'The Church Weddings Handbook: The Seven Pastoral Moments That Matter' which emphasised how the project aimed to see a "measurable difference" as a "church growth project".
- Subsequent projects are now seeking to understand how baptisms and funerals can also be opportunities for growth.
- The data presented on funerals include parochial funerals only and as such a number of funerals conducted by the Church of England will not be captured in these figures.