



**Renfrew Road
Ipswich
Suffolk
IP4 3HJ**

Rent

£701.92 per month

*(subject to annual rent review –
this amount may change prior to
your tenancy start date)*

Bedrooms: 2

Reception rooms: 1



Council Tax Band: B

EPC Rating: C



Property Features:

Semi-detached
Off road parking
Gas central heating
Full double glazing
Rear garden

**This property is located in Suffolk, please click
[here](#) to view a map.**

**To be available in 12 months
from reservation.**

HOUSING BULLETIN



To nearest station:

Westerfield

1.9 miles

To nearest bus stop:

0.1 miles

To nearest shops:

Coop

0.7 miles

To nearest GP/Hospital:

Ipswich Hospital

1.1 miles



To nearest church:

Rushmere

0.5 miles

Local Diocese:

St Edmundsbury & Ipswich

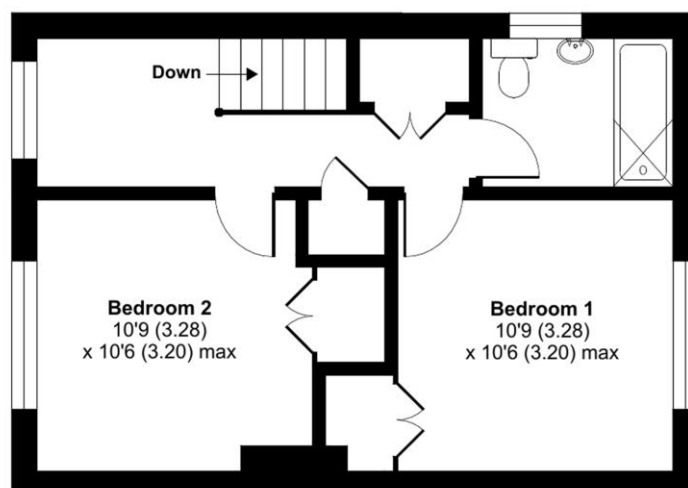




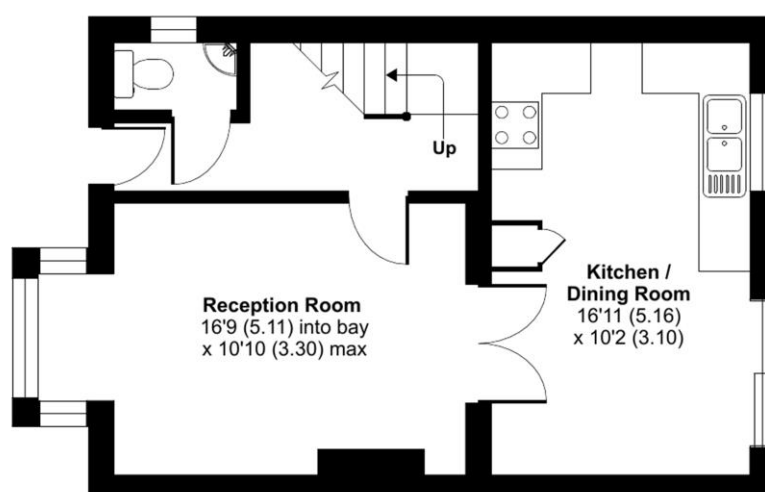
Renfrew Road, Ipswich, IP4

Approximate Area = 865 sq ft / 80.3 sq m

For identification only - Not to scale



FIRST FLOOR



GROUND FLOOR



Floor plan produced in accordance with RICS Property Measurement Standards incorporating International Property Measurement Standards (IPMS2 Residential). © nichecom 2022. Produced for Church of England Pensions Board. REF: 806863