



**Allen Court  
Hauxton Road  
Trumpington  
Cambridgeshire  
CB2 9LU**

**Rent**

**£826.87 per month**

*(subject to annual rent review –  
this amount may change prior to  
your tenancy start date)*

**Bedrooms: 2**

**Reception rooms: 1**



**Council Tax Band: C**

**EPC Rating: D**



**Property Features:**

**Bungalow**

**Gas central heating**

**Bath**

**Rear garden**

**These properties have  
been refurbished and  
will be let as seen.**

**This property is located in Cambridgeshire,  
please click [here](#) to view a map.**

**To be available in 12 months  
from reservation.**

# HOUSING BULLETIN



## **To nearest station:**

Cambridge

2.2 miles

## **To nearest bus stop:**

0.1 miles

## **To nearest shops:**

0.1 miles

## **To nearest GP/Hospital:**

Trumpington Surgery

1.6 miles



## **To nearest church:**

St Mary & St Michaels

0.4 miles

## **Local Diocese:**

Ely

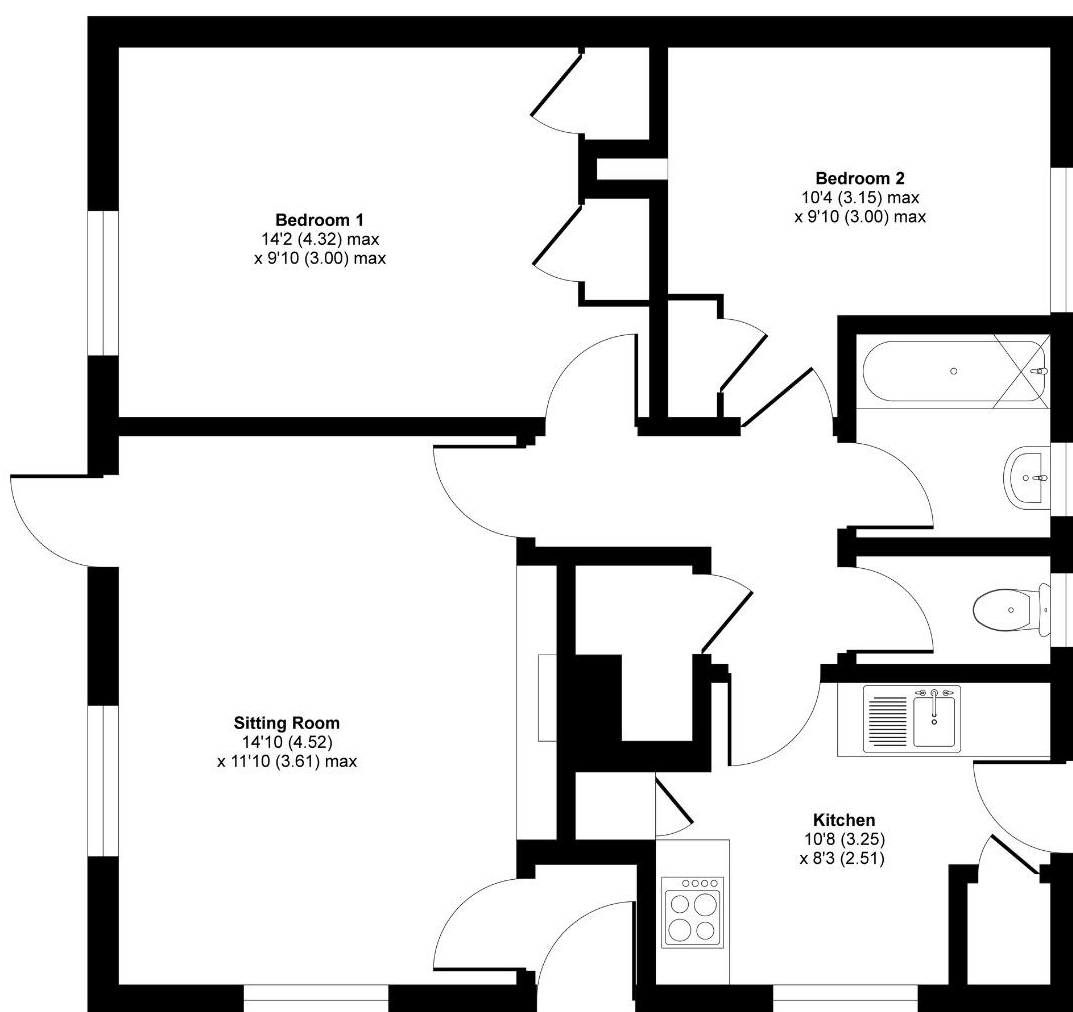




## Hauxton Road, Trumpington, Cambridge, CB2

Approximate Area = 638 sq ft / 59 sq m

For identification only - Not to scale



GROUND FLOOR



Floor plan produced in accordance with RICS Property Measurement Standards incorporating International Property Measurement Standards (IPMS2 Residential). © nchecon 2020. Produced for Church of England Pensions Board. REF: 646775