



**Westfield Farm
Ossett
West Yorkshire
WF5 8QT**

Rent

£595.61 per month

*(subject to annual rent review –
this amount may change prior to
your tenancy start date)*

Bedrooms: 2

Reception rooms: 2



Council Tax Band: C

EPC Rating: D



Property Features:

Detached

Gas central heating

Rear garden

Off road parking

**This property is located in Yorkshire, West
Riding, please click [here](#) to view a map.**

**To be available in 12 months
from reservation.**

HOUSING BULLETIN



To nearest station:

Dewsbury

2.3 miles

To nearest bus stop:

0.4 miles

To nearest shops:

0.8 miles

To nearest GP/Hospital:

Dewsbury & District Hospital

3.4 miles



To nearest church:

Trinity Church

0.4 miles

Local Diocese:

Leeds





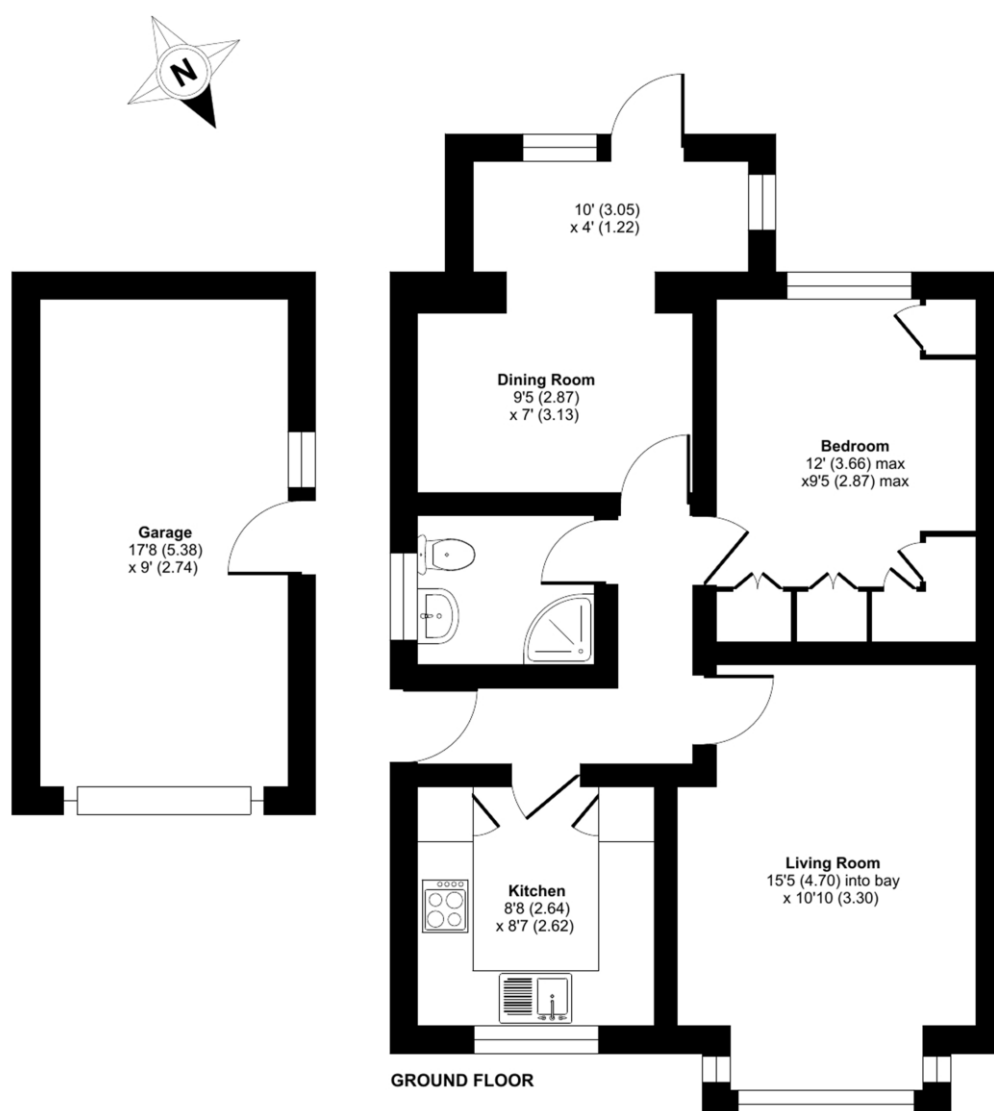
Westfield Farm, Westfield Drive, Ossett, WF5

Approximate Area = 600 sq ft / 55.7 sq m

Garage = 159 sq ft / 14.7 sq m

Total = 759 sq ft / 71 sq m

For identification only - Not to scale



Floor plan produced in accordance with RICS Property Measurement Standards incorporating International Property Measurement Standards (IPMS2 Residential). © richcom 2022. Produced for Church of England Pensions Board. REF: 903621