



**Sandford Gardens  
Wells  
Somerset  
BA5 2DR**

**Rent**

**£568.71 per month**

*(subject to annual rent review –  
this amount may change prior to  
your tenancy start date)*

**Bedrooms: 2**

**Reception rooms: 1**



**Council Tax Band: C**

**EPC Rating: C**



**Property Features:**

Ground floor flat  
Gas central heating  
Full double glazing  
Off road parking

This property is located in Somerset, please click [here](#) to view a map.

To be available in 12 months  
from reservation.

# HOUSING BULLETIN



## **To nearest station:**

Castle Cary

11.0 miles

## **To nearest bus stop:**

0.5 miles

## **To nearest shops:**

0.2 miles

## **To nearest GP/Hospital:**

4.3 miles



## **To nearest church:**

St Cuthberts

0.2 miles

## **Local Diocese:**

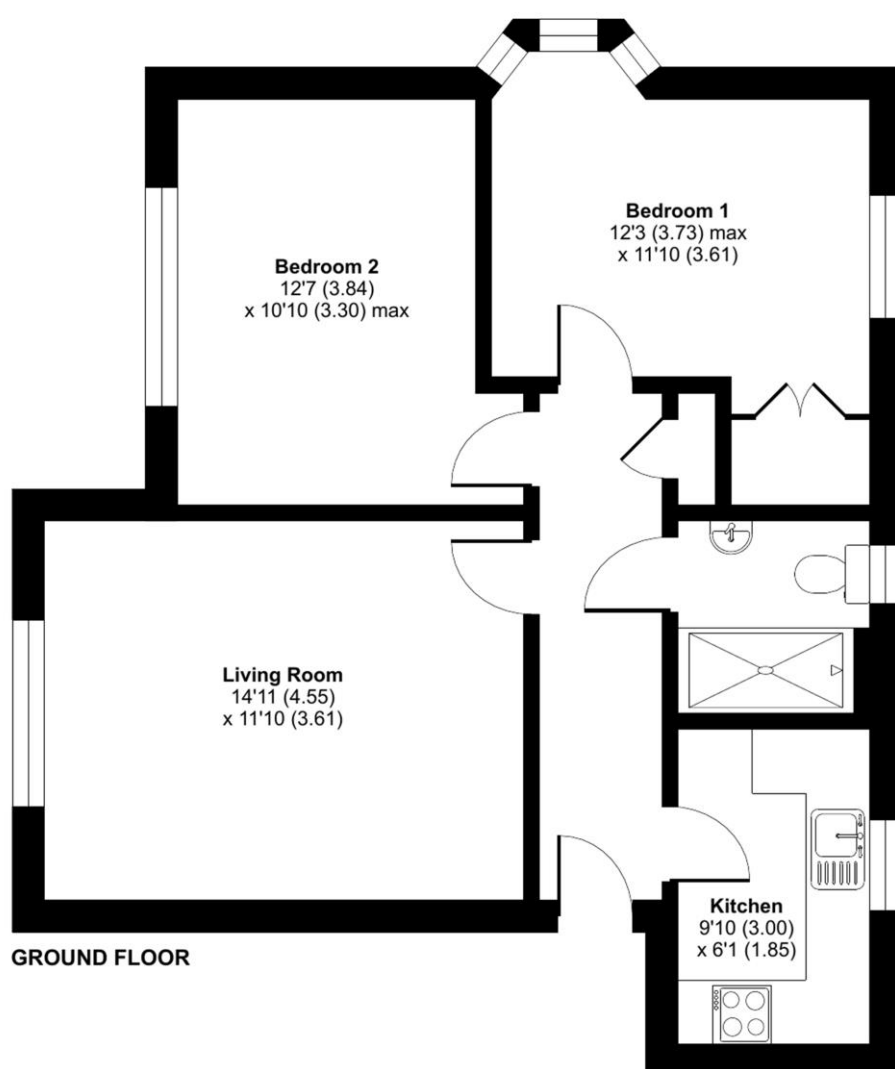
Bath and Wells



## Sandford Gardens, Wells, BA5

Approximate Area = 623 sq ft / 57.8 sq m

For identification only - Not to scale



Floor plan produced in accordance with RICS Property Measurement Standards incorporating International Property Measurement Standards (IPMS2 Residential). © richcom 2023. Produced for Church of England Pensions Board. REF: 940705