



**Claypatch Road
Wyesham
Monmouth
NP25 3PN**

Rent

£546.66 per month

*(subject to annual rent review –
this amount may change prior to
your tenancy start date)*

Bedrooms: 3

Reception rooms: 1



Council Tax Band: E

EPC Rating: D



Property Features:

Detached
Attached garage
Off road parking
Gas central heating
Conservatory
Rear garden

**This property is located in Monmouthshire,
please click [here](#) to view a map.**

**To be available in 12 months
from reservation.**

HOUSING BULLETIN



To nearest station:

Lydney

11.9 miles

To nearest bus stop:

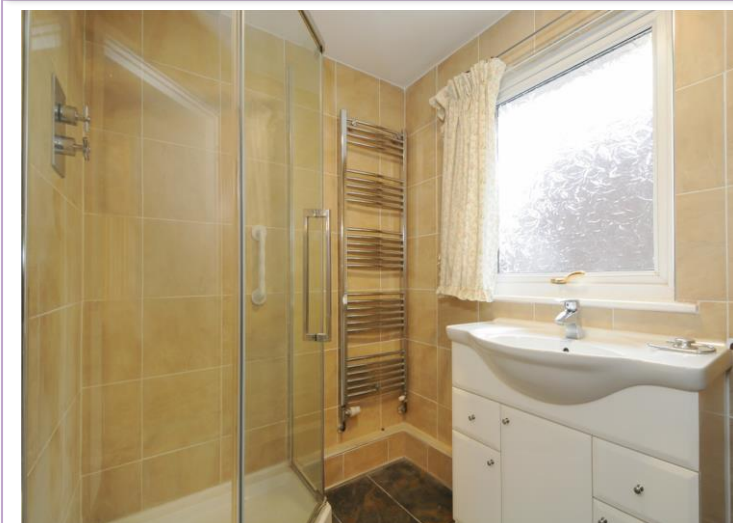
0.1 miles

To nearest shops:

0.6 miles

To nearest GP/Hospital:

14.5 miles



To nearest church:

Wyesham St James

0.2 miles

Local Diocese:

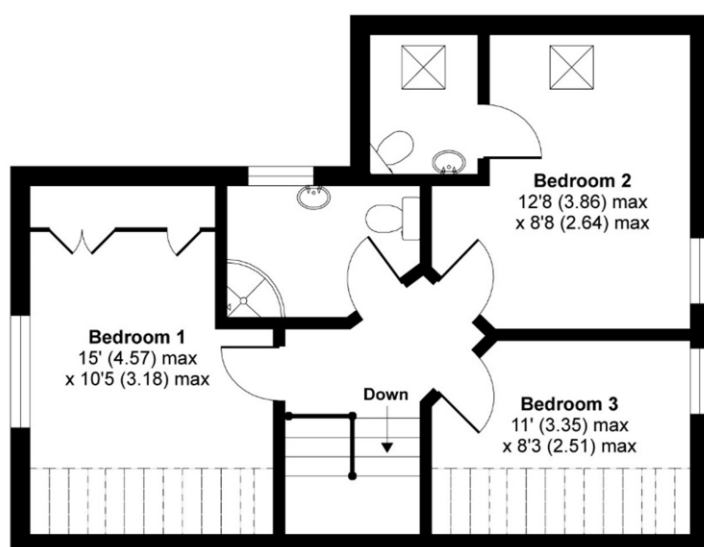
Wales



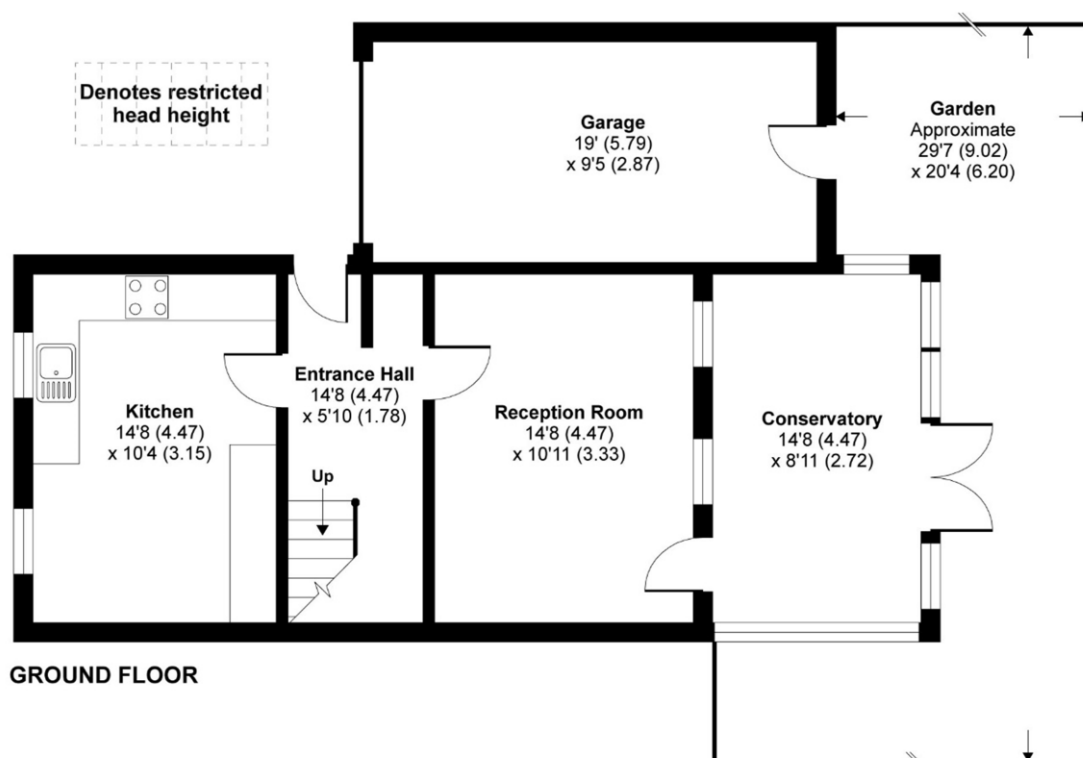


Claypatch Road, NP25

APPROX. GROSS INTERNAL FLOOR AREA 1219 SQ FT 113.2 SQ METRES
(EXCLUDES RESTRICTED HEAD HEIGHT / INCLUDES GARAGE)



FIRST FLOOR



GROUND FLOOR