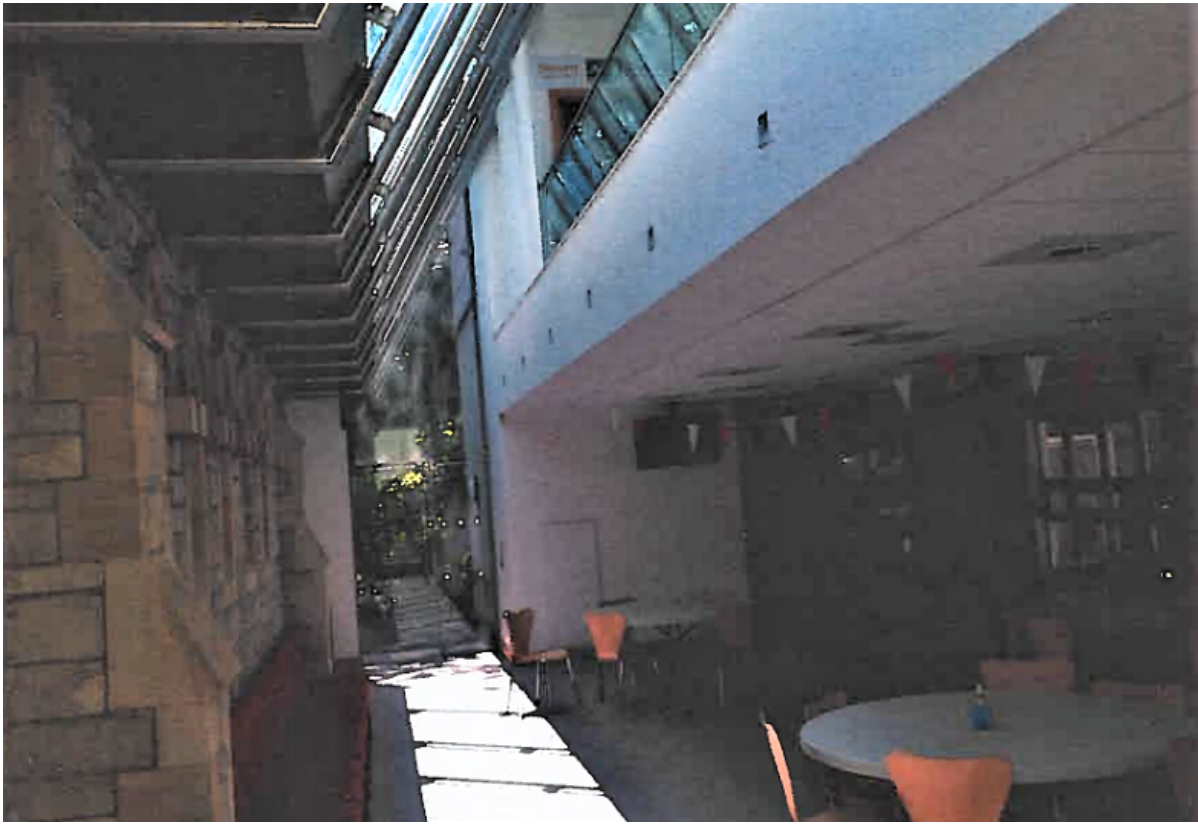


In 2010 it became clear that the former church hall was no longer fit for use at **Christ Church in Westbourne** (Diocese of Winchester). The decision was taken to replace it with a new state-of-the-art building, with energy efficiency built into the design, and featuring an air source heat pump. The new hall included six rooms over two storeys and was connected to the church building via a glass atrium.

The results of the work have been positive, with the church hall now in daily use and the parish benefitting from significantly reduced energy bill costs.



Read the Case Study below.

- [Westbourne Church Hall Case Study | The Church of England](#)

Learn more about Westbourne Christ Church

#### Church Heritage Record

[Westbourne: Christ Church - CHR Church \(churchofengland.org\)](#)

#### A Church Near You

[Christ Church - A Church Near You](#)

#### Winchester Diocese Environment Page

[The Environment - Winchester \(anglican.org\)](#)

# Also of interest

## Net-zero Carbon Church

[Find helpful guidance](#)

## Net-zero Webinars

[Learn more about Net-zero](#)

## More Case Studies

[Back to the main case studies page](#)

## Eco Church

[Find out more about the Eco Church scheme, run by A Rocha](#)

## Environment Home Page

[Main landing page for environment](#)

## Fundraising

[Information about fundraising options](#)

---

**Source URL:** <https://www.churchofengland.org/about/environment-and-climate-change/towards-net-zero-carbon-case-studies/new-church-hall-kept-warm>