

Join the #ChurchDoorChallenge on social media this July and August, showcasing the hospitality, history, and diversity of churches across the country.

Summer in Britain – a chance to bask in the glorious sunshine, while carefully avoiding the daily downpours.

As well as hoping to see some sunshine this July and August, we would also love to see, and share, wonderful photos of church doors from across the country.

We have over 16,000 church buildings in England, each with a unique community offering, surrounding, and story.

This summer, we'd love you to take up the **#ChurchDoorChallenge** and help us showcase some fantastic doors and entrances.

Every week on our national social media accounts, we invite people to visit churches or attend a service. And your photos will help make even more people aware of churches in their area. We will share our favourite pictures and videos with a link to [ACHurchNearYou.com!](https://www.achurchnearyou.com)

Ready to join us in taking up the challenge? Here's how to get involved:

### **Step one**

Take a photo – or even short video – of your church door/entrance. Perhaps it has an interesting design or a fascinating bit of history – you could also share a photo of an interior door.

Whether you worship in a church in rural Lincolnshire, or the busy heart of Leeds, snap away.

### **Step two**

Upload your photo or video to your social media platform of choice - Facebook/Instagram/X/Threads/TikTok

### **Step three**

Accompany your photo or video with the name and location of the church. Maybe even highlight something you offer that gets your local community through the door.

*P.S. – Important note – if someone else took the photo, be nice and give them credit in your post.*

### **Step four (this bit is important!)**

Before posting your photo or video – use **#ChurchDoorChallenge**.

If you don't use the hashtag, our team won't see your post.



## Step five

We will share some of your door snaps across our social platforms throughout the summer season.

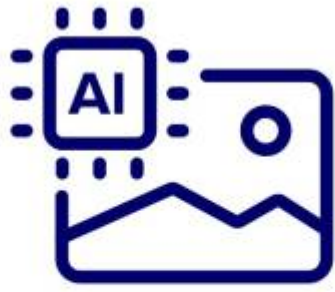
- Sam Frawley, Social Media Manager

## Extra notes

- We will be running #ChurchDoorChallenge from 15 July – 31 August 2024.
- As per the Church of England social media policy, any post that contains a web link to a church service, event, or website won't be shared, but we will link to AChurchNearYou.com for the public to find their nearest church. Make sure your ACNY pages are up to date!
- Any post that contains derogatory or inflammatory language will not be shared.
- Our team will see all your creations, however we cannot commit to sharing every post that is submitted.
- If you have any further questions on #ChurchDoorChallenge, reach out to us: **digital@churchofengland.org**.

## • AI for Content Creation, Part 2: Image Generation

13/09/2024



## • Let's Unwrap the Christmas Campaign Resources for 2024

06/09/2024



## • Understanding Facebook Insights in 2024

30/08/2024



**Source URL:** <https://www.churchofengland.org/resources/digital-labs/blogs/church-door-challenge-join-summer-social-media>