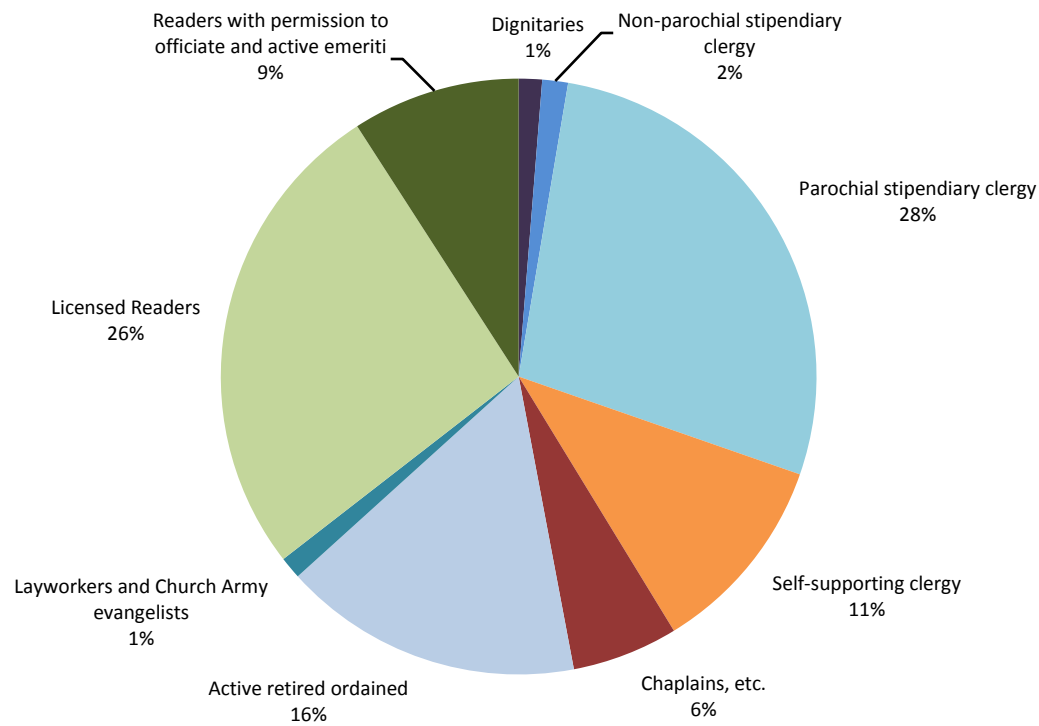


Church of England licensed ministries 2009



Licenses stipendiary clergy	8,591
Licenses self-supporting clergy	3,100
Chaplains and other ministries	1,631
Licenses layworkers and lay Church Army evangelists	341
Active retired ordained	4,610
Licensed Readers	7,472
Readers with permissions to officiate and active emeriti	2,584
Totals CHURCH OF ENGLAND	28,329

The figures for stipendiary clergy (full-time, part-time and including those outside the clergy share system) and for lay workers above are based on statistics derived from the central Church payroll. Details of chaplains and other ministers working outside the parish framework, and of non-stipendiary clergy, are based on statistics derived from the database used to compile Crockford's Clerical Directory. Where possible, they have been cross-referenced with material produced by organizing bodies (Church Army, the Home Office for prison chaplains, and the Hospital Chaplaincies Council for hospital chaplains).

The figure shown for active retired ordained clergy is an estimate of the number of licensed retired clergy who take an active part in ministry. It is based on the number of retired clergy known to have either permission to officiate, licence to officiate or actual appointments. Pension Board records indicated a total of 8,954 retired stipendiary clergy in 2009.



Summary diocesan licensed ministers 2009

Provinces of Canterbury and York (including Europe)

Diocese		Full-time stipendiary clergy			Part time stipendiary clergy			Self supporting clergy, except ordained local ministers			Ordained local ministers among self-supporting clergy			Total clergy (stipendiary and self supporting)	Readers and Church Army	Total clergy, readers and Church Army
		men	women	Total	men	women	Total	men	women	Total	men	women	Total			
1 Bath & Wells	C	158	42	200	8	8	16	23	27	50	0	0	0	266	284	550
2 Birmingham	C	115	44	159	3	3	6	20	21	41	0	0	0	206	166	372
3 Blackburn	Y	156	17	173	4	2	6	21	22	43	0	0	0	222	171	393
4 Bradford	Y	84	13	97	3	6	9	20	18	38	0	0	0	144	104	248
5 Bristol	C	100	24	124	1	5	6	18	22	40	5	4	9	179	167	346
6 Canterbury	C	116	24	140	2	3	5	23	27	50	12	14	26	221	108	329
7 Carlisle	Y	109	28	137	0	2	2	21	21	42	2	2	4	185	115	300
8 Chelmsford	C	300	76	376	7	6	13	43	50	93	1	0	1	483	384	867
9 Chester	Y	202	48	250	12	6	18	18	32	50	0	0	0	318	375	693
10 Chichester	C	274	19	293	9	3	12	49	28	77	0	0	0	382	154	536
11 Coventry	C	91	19	110	6	3	9	11	21	32	3	8	11	162	160	322
12 Derby	C	119	28	147	0	0	0	24	30	54	0	0	0	201	246	447
13 Durham	Y	147	42	189	6	2	8	17	24	41	1	4	5	243	149	392
14 Ely	C	101	39	140	6	5	11	23	26	49	0	0	0	200	144	344
15 Exeter	C	174	35	209	15	6	21	23	21	44	0	0	0	274	180	454
16 Gloucester	C	102	36	138	3	2	5	44	43	87	3	6	9	239	145	384
17 Guildford	C	138	32	170	4	12	16	32	36	68	28	26	54	308	127	435
18 Hereford	C	68	24	92	0	3	3	14	30	44	3	6	9	148	87	235
19 Leicester	C	104	36	140	4	3	7	18	21	39	0	0	0	186	145	331
20 Lichfield	C	244	59	303	12	11	23	24	33	57	33	31	64	447	313	760
21 Lincoln	C	138	36	174	3	1	4	9	21	30	14	17	31	239	151	390
22 Liverpool	Y	158	51	209	0	2	2	12	13	25	12	18	30	266	273	539
23 London	C	453	72	525	6	9	15	106	45	151	0	0	0	691	211	902
24 Manchester	Y	179	56	235	4	4	8	26	17	43	41	45	86	372	155	527
25 Newcastle	Y	101	34	135	3	3	6	13	18	31	9	8	17	189	103	292
26 Norwich	C	156	34	190	2	8	10	17	16	33	23	23	46	279	184	463
27 Oxford	C	293	92	385	6	2	8	109	91	200	19	30	49	642	230	872
28 Peterborough	C	108	27	135	2	1	3	19	21	40	0	0	0	178	131	309
29 Portsmouth	C	87	19	106	0	3	3	22	37	59	0	0	0	168	91	259
30 Ripon & Leeds	Y	89	38	127	2	0	2	22	15	37	0	0	0	166	103	269
31 Rochester	C	179	27	206	3	9	12	22	29	51	0	0	0	269	256	525
32 St. Albans	C	179	73	252	3	6	9	43	45	88	0	1	1	350	214	564
33 St. Edms & Ipswich	C	107	31	138	4	5	9	19	17	36	15	25	40	223	130	353
34 Salisbury	C	162	50	212	1	0	1	26	43	69	23	27	50	332	105	437
35 Sheffield	Y	115	37	152	1	4	5	17	6	23	0	0	0	180	196	376
36 Sodor & Man	Y	12	1	13	0	0	0	6	2	8	2	0	2	23	28	51
37 Southwark	C	267	80	347	2	5	7	96	104	200	0	0	0	554	191	745
38 Southwell & Nottingham	Y	108	43	151	3	6	9	15	14	29	0	0	0	189	287	476
39 Truro	C	90	17	107	3	0	3	22	24	46	5	4	9	165	80	245
40 Wakefield	Y	103	39	142	0	3	3	19	22	41	8	16	24	210	136	346
41 Winchester	C	179	21	200	5	3	8	41	44	85	0	0	0	293	284	577
42 Worcester	C	108	29	137	1	0	1	10	22	32	0	0	0	170	124	294
43 York	Y	178	44	222	5	1	6	42	37	79	0	1	1	308	222	530
44 Europe	C	128	13	141	0	0	0	33	14	47	0	0	0	188	73	261
Totals Province of Canterbury	C	4,838	1,158	5,996	121	125	246	983	1,009	1,992	187	222	409	8,643	5,265	13,908
Totals Province of York	Y	1,741	491	2,232	43	41	84	269	261	530	75	94	169	3,015	2,417	5,432
Totals CHURCH OF ENGLAND		6,579	1,649	8,228	164	166	330	1,252	1,270	2,522	262	316	578	11,658	7,682	19,340



Notes:

- 1 The above figures include only those ministers who were working within the diocesan framework as at 31 December 2009.
- 2 The Archbishop of Canterbury and ordained members of his staff at Lambeth Palace are classed as extra-diocesan and are not included in these figures.
- 3 Reader and Church Army figures do not include Readers with PTO or emeriti, or ordained Church Army evangelists.
- 4 Figures for stipendiary clergy and for lay workers are based on statistics derived from the central Church payroll.
- 5 Details of self-supporting clergy are based on statistics derived from the database used to compile Crockford's Clerical Directory. Where possible they have been cross-referenced with material produced by organising bodies.
- 6 Stipendiary clergy and lay workers are paid by central Church payroll. Self-supporting clergy (and Ordained Local Ministers) hold diocesan licenses with a role in parishes.

Full time stipendiary diocesan clergy 2009

Provinces of Canterbury and York (including Europe)

Diocese		Dignitaries (including benefices)										Parochial clergy								Non-parochial diocesan clergy	Total stipendiary diocesan clergy 2009		Total stipendiary diocesan clergy 2008		
		Diocesan bishops	Suffragan bishops	Arch-deacons	Cathedrals				Total dignitaries	Incumbents (excluding dignitaries)		Incumbent status		Assistant curates		Total parochial clergy		m	f		m	f			
					m	f	m	f		m	f	m	f	m	f	m	f								
1 Bath & Wells	C	1	1	2	1	1	0	2	0	7	1	87	17	35	13	25	10	147	40	4	1	158	42	168	40
2 Birmingham	C	1	1	2	0	0	0	2	1	6	1	74	13	18	7	12	20	104	40	5	3	115	44	123	45
3 Blackburn	Y	1	2	2	0	1	0	2	0	8	0	85	5	43	4	15	7	143	16	5	1	156	17	159	17
4 Bradford	Y	1	0	2	0	1	0	1	1	5	1	42	3	23	5	8	3	73	11	6	1	84	13	85	14
5 Bristol	C	1	1	2	0	0	0	2	1	6	1	44	5	26	8	13	7	83	20	11	3	100	24	103	29
6 Canterbury	C	0	1	1	1	1	0	3	1	6	2	45	5	45	10	15	7	105	22	5	0	116	24	113	24
7 Carlisle	Y	1	0	3	0	1	0	2	0	7	0	52	9	30	12	15	6	97	27	5	1	109	28	120	25
8 Chelmsford	C	0	3	3	1	1	0	3	0	10	1	185	21	54	30	39	23	278	74	12	1	300	76	315	72
9 Chester	Y	1	2	2	0	1	0	2	0	8	0	126	27	28	8	32	13	186	48	8	0	202	48	197	46
10 Chichester	C	1	2	3	0	1	0	2	0	9	0	171	4	43	6	43	9	257	19	8	0	274	19	273	19
11 Coventry	C	1	1	1	0	1	0	2	0	6	0	52	5	20	6	10	6	82	17	3	2	91	19	98	18
12 Derby	C	1	1	1	0	1	0	2	1	6	1	59	9	33	10	17	8	109	27	4	0	119	28	130	25
13 Durham	Y	1	1	3	0	1	0	2	1	8	1	82	9	32	13	17	16	131	38	8	3	147	42	151	38
14 Ely	C	1	1	2	0	1	0	3	0	8	0	54	15	18	14	15	8	87	37	6	2	101	39	105	37
15 Exeter	C	1	2	2	1	1	0	2	0	8	1	70	6	65	14	27	14	162	34	4	0	174	35	189	34
16 Gloucester	C	1	1	2	0	1	0	1	1	6	1	44	12	35	10	11	13	90	35	6	0	102	36	108	31
17 Guildford	C	1	1	2	0	1	0	1	1	6	1	93	15	14	5	22	11	129	31	3	0	138	32	145	30
18 Hereford	C	1	1	1	0	1	0	2	0	6	0	40	8	11	11	8	4	59	23	3	1	68	24	69	28
19 Leicester	C	1	1	2	0	0	1	4	0	8	1	51	14	25	10	11	11	87	35	9	0	104	36	105	37
20 Lichfield	C	1	3	4	0	1	0	2	0	11	0	150	14	48	22	26	20	224	56	9	3	244	59	243	55
21 Lincoln	C	1	2	1	1	1	0	3	0	8	1	70	7	33	17	19	9	122	33	8	2	138	36	138	35
22 Liverpool	Y	1	1	2	0	1	0	2	0	7	0	95	18	36	15	18	18	149	51	2	0	158	51	162	49
23 London	C	1	5	4	1	1	0	5	1	16	2	272	23	43	7	104	32	419	62	18	8	453	72	447	68
24 Manchester	Y	1	2	3	1	1	0	2	1	9	2	83	13	66	26	18	11	167	50	3	4	179	56	185	56
25 Newcastle	Y	1	1	2	0	1	0	2	0	7	0	60	13	19	10	9	8	88	31	6	3	101	34	106	31
26 Norwich	C	1	2	2	1	1	0	3	0	9	1	109	18	18	4	14	10	141	32	6	1	156	34	158	35
27 Oxford	C	1	3	2	1	0	0	0	1	6	2	160	28	68	36	53	17	281	81	6	9	293	92	286	89
28 Peterborough	C	0	1	1	1	1	0	2	0	5	1	57	11	27	10	15	3	99	24	4	2	108	27	112	29
29 Portsmouth	C	0	0	2	1	1	0	1	0	4	1	61	9	9	3	9	6	79	18	4	0	87	19	94	18
30 Ripon & Leeds	Y	1	1	1	1	1	0	2	0	6	1	43	10	27	12	9	14	79	36	4	1	89	38	94	36
31 Rochester	C	0	1	2	0	1	0	2	0	6	0	128	13	19	4	23	9	170	26	3	1	179	27	185	29
32 St. Albans	C	1	2	3	0	1	0	2	0	9	0	98	16	46	38	19	18	163	72	7	1	179	73	187	65
33 St. Edms & Ipswich	C	1	1	0	1	0	0	2	0	4	1	65	11	23	11	10	7	98	29	5	1	107	31	114	27
34 Salisbury	C	1	2	3	0	0	1	3	0	9	1	83	9	43	20	21	17	147	46	6	3	162	50	168	44
35 Sheffield	Y	1	1	1	0	1	0	2	1	6	1	82	21	12	5	11	10	105	36	4	0	115	37	120	37
36 Sodor & Man	Y	1	0	1	0	0	0	0	0	2	0	9	1	0	0	0	0	9	1	1	0	12	1	12	1
37 Southwark	C	1	3	5	1	1	0	2	2	12	3	157	31	49	18	40	25	246	74	9	3	267	80	268	76
38 Southwell & Nottingham	Y	1	1	2	0	1	0	2	1	7	1	34	8	48	18	12	13	94	39	7	3	108	43	107	43
39 Truro	C	1	1	2	0	1	0	2	0	7	0	34	3	40	9	9	5	83	17	0	0	90	17	91	18
40 Wakefield	Y	1	1	2	0	1	0	2	1	7	1	64	12	21	14	7	12	92	38	4	0	103	39	113	39
41 Winchester	C	1	1	1	0	1	0	3	0	7	0	106	9	31	5	29	6	166	20	6	1	179	21	190	21
42 Worcester	C	1	1	2	0	1	0	2	0	7	0	56	12	27	7	9	9	92	28	9	1	108	29	113	30
43 York	Y	1	2	3	0	1	0	2	0	9	0	107	18	25	15	27	9	159	42	10	2	178	44	183	43
44 Europe	C	1	1	7	0	1	0	2	0	12	0	0	0	100	7	15	5	115	12	1	1	128	13	118	13
Totals Province of Canterbury	C	25	47	67	12	24	2	67	10	230	24	2,675	363	1,066	372	683	349	4,424	1,084	184	50	4,838	1,158	4,956	1,121
Totals Province of York	Y	14	15	29	2	13	0	25	6	96	8	964	167	410	157	198	140	1,572	464	73	19	1,741	491	1,794	475
Totals CHURCH OF ENGLAND		39	62	96	14	37	2	92	16	326	32	3,639	530	1,476	529	881	489	5,996	1,548	257	69	6,579	1,649	6,750	1,596

Notes:

- 1 The above figures include only those ministers who were working within the diocesan framework as at 31 December 2009
- 2 The Archbishop of Canterbury and ordained members of his staff at Lambeth Palace are classed as extra-diocesan and are not included in these figures.
- 3 Reader and Church Army figures do not include Readers with PTO or emeriti, or ordained Church Army evangelists.
- 4 Figures for stipendiary clergy and for lay workers are based on statistics derived from the central Church payroll.
- 5 Details of self-supporting clergy are based on statistics derived from the database used to compile Crockford's Clerical Directory. Where possible they have been cross-referenced with material produced by organising bodies.
- 6 Stipendiary clergy and lay workers are paid by central Church payroll. Self-supporting clergy (and Ordained Local Ministers) hold diocesan licenses with a role in parishes.
- 7 Dignitaries holding more than one dignity are included only in the higher ranking dignity.
- 8 Incumbent status includes Team Vicars, Priests-in-Charge and Curates-in Charge of Conventional Districts.



Chaplaincy and other ministries 2009

Provinces of Canterbury and York (including Europe)

Code	Ministry	Male	Female	Total
AF	Royal Navy chaplains	38	0	38
AF	Army chaplains	78	2	80
AF	Royal Air Force chaplains	40	3	43
PC	Prison chaplains	86	44	130
HC	Hospital/healthcare chaplains	177	100	277
SC	School chaplains ³	151	27	178
HE/FE	Higher and Further Education chaplains ³	78	19	97
OC	Other chaplains ⁴	239	51	290
NS	Other self-supporting clergy ⁵	184	87	271
TC	Ordained staff of theological and bible colleges and other Christian centres for education and research	81	29	110
RC	Ordained members of religious communities ⁶	61	26	87
CA	Ordained Church Army evangelists	24	6	30
	Total 2009	1,237	394	1,631
	Total 2008	1,403	443	1,846

Notes:

- The table does not include chaplains and other clergy counted elsewhere in the statistics; for example chaplains who have a diocesan appointment and are on the Church Commissioners' payroll.
- Where an individual holds more than one appointment it has been a subjective decision as to where to place an individual. This means that there is inevitably some disparity between the above figures and those for previous years.
- Apart from chaplains, ordained members of the teaching staffs of schools and colleges are not counted here, but are included within the self-supporting clergy figures.
- 'Other chaplains' includes full and part-time ordained staff of retreat houses, conference and healing centres, shrines, almshouses, missionary societies and communities.
- 'Other self-supporting clergy' includes: full and part-time ordained staff with either diocesan or non-diocesan appointments; some cathedral clergy; certain chaplains; and those who are not parish deployable but with licence to officiate or permission to officiate.
- Of these, 81 are professed in vows and 2 are novices. There are an additional 390 lay members of religious communities who are professed in vows (32 men and 358 women).
- In addition there are 131 accredited lay workers on the Church Commissioners' payroll (including some church army evangelists), 9 deaconesses, and a further 13 full-time clergy on the staff of Church House and Lambeth Palace.
- The figures for chaplains and other ministers working outside the parish framework are based on statistics derived from the database used to compile Crockford's Clerical Directory (with the exception of religious communities and Church Army where data is collected from source). Where possible, they have been cross-referenced with material produced by organizing bodies (Ministry of Defence for the forces chaplains; Home Office for prison chaplains; Hospital Chaplaincies Council for hospital chaplains).
- The above figures capture those in chaplaincy and other ministries as at 31 December 2009, except Hospital and healthcare chaplains, which is accurate as of April 2010.



Licensed Readers and Church Army 2009

Provinces of Canterbury and York (including Europe)

Diocese		Reader admissions during year		Licensed Readers at 31 Dec 2009				Readers in training at 31 Dec 2009		Church Army (lay evangelists) at 31 Dec 2009	
		m	f	m	f	m	f	m	f		
1 Bath & Wells	C	7	10	143	(56)	136	(18)	3	2	4	1
2 Birmingham	C	4	8	78	(20)	87	(23)	7	11	1	0
3 Blackburn	Y	3	7	72	(42)	97	(19)	6	3	2	0
4 Bradford	Y	0	3	39	(25)	59	(15)	6	14	5	1
5 Bristol	C	4	11	69	(27)	98	(30)	12	17	0	0
6 Canterbury	C	2	3	38	(29)	64	(20)	7	6	6	0
7 Carlisle	Y	1	5	57	(29)	56	(20)	4	6	2	0
8 Chelmsford	C	1	10	181	(48)	196	(35)	2	18	3	4
9 Chester	Y	6	10	189	(93)	181	(29)	21	23	3	2
10 Chichester	C	5	2	85	(80)	63	(38)	11	10	6	0
11 Coventry	C	7	3	79	(28)	75	(14)	3	7	4	2
12 Derby	C	4	3	123	(40)	121	(30)	1	7	2	0
13 Durham	Y	1	7	61	(34)	85	(16)	7	15	1	2
14 Ely	C	1	4	74	(27)	67	(12)	6	16	3	0
15 Exeter	C	4	3	89	(54)	86	(46)	14	23	4	1
16 Gloucester	C	4	3	82	(29)	61	(20)	6	15	1	1
17 Guildford	C	3	4	70	(38)	49	(21)	11	5	5	3
18 Hereford	C	0	5	45	(10)	38	(7)	3	5	2	2
19 Leicester	C	0	8	66	(20)	76	(11)	1	2	2	1
20 Lichfield	C	2	11	156	(60)	145	(48)	11	28	8	4
21 Lincoln	C	4	2	52	(28)	95	(17)	8	22	4	0
22 Liverpool	Y	2	9	123	(33)	142	(26)	22	25	5	3
23 London	C	4	3	111	(26)	92	(26)	6	19	5	3
24 Manchester	Y	3	6	78	(51)	71	(23)	5	10	4	2
25 Newcastle	Y	2	5	45	(19)	53	(20)	5	6	2	3
26 Norwich	C	1	6	84	(53)	96	(43)	2	14	3	1
27 Oxford	C	3	8	120	(40)	103	(26)	8	14	4	3
28 Peterborough	C	2	7	69	(22)	58	(10)	11	16	2	2
29 Portsmouth	C	0	5	44	(19)	47	(17)	6	6	0	0
30 Ripon & Leeds	Y	3	4	51	(19)	45	(28)	3	13	4	3
31 Rochester	C	8	7	131	(70)	120	(36)	14	8	3	2
32 St. Albans	C	3	3	111	(41)	98	(34)	19	31	5	0
33 St. Edms & Ipswich	C	3	1	72	(34)	54	(37)	5	6	3	1
34 Salisbury	C	1	3	67	(63)	37	(30)	5	7	1	0
35 Sheffield	Y	0	5	92	(17)	81	(17)	13	11	14	9
36 Sodor & Man	Y	2	1	17	(7)	11	(3)	1	2	0	0
37 Southwark	C	4	10	96	(48)	89	(27)	16	24	3	3
38 Southwell & Nottingham	Y	6	3	132	(21)	150	(19)	8	13	4	1
39 Truro	C	0	2	40	(29)	37	(13)	5	9	1	2
40 Wakefield	Y	1	5	59	(25)	73	(16)	9	7	4	0
41 Winchester	C	5	4	154	(47)	123	(14)	20	19	5	2
42 Worcester	C	3	2	52	(26)	71	(13)	5	7	1	0
43 York	Y	6	7	109	(47)	108	(24)	14	15	2	3
44 Europe	C	4	1	44	(14)	29	(5)	17	20	0	0
Totals Province of Canterbury	C	93	152	2,625	(1,126)	2,511	(721)	245	394	91	38
Totals Province of York	Y	36	77	1,124	(462)	1,212	(275)	124	163	52	29
Totals CHURCH OF ENGLAND		129	229	3,749	(1,588)	3,723	(996)	369	557	143	67

Research & Statistics



Comparable figures for 2008:

Totals Province of Canterbury	C	113	145	2,741	(1,127)	2,543	(697)	245	405	85	35
Totals Province of York	Y	50	67	1,155	(472)	1,214	(241)	126	177	55	29
Totals CHURCH OF ENGLAND		163	212	3,896	(1,599)	3,757	(938)	371	582	140	64

Notes:

- 1 Readers figures in brackets refer to the additional number of Readers with Permission to Officiate and active Emeriti. These figures have been revised since the publication of 'The Annual Report of the Central Readers Council of the Church of England 2009'.
- 2 There are a further six Church Army evangelists who are nationally deployed. Ordained Church Army evangelists are counted in the 'Chaplaincy and other ministries' table.

Stipendiary clergy losses and gains 1995-2009

Year	Deaths in service		Retirements		Other losses		Total losses		Ordinations		Other gains		Total gains		Net loss or gain	
	m	f	m	f	m	f	m	f	m	f	m	f	m	f	m	f
1995	27	1	338	19	236	55	601	75	245	65	130	47	375	112	-226	37
1996	29	2	363	17	241	41	633	60	201	67	137	32	338	99	-295	39
1997	21	1	357	19	207	25	585	45	186	57	129	48	315	105	-270	60
1998	24	0	329	16	187	28	540	44	174	67	144	41	318	108	-222	64
1999	25	2	317	16	201	39	543	57	199	78	150	57	349	135	-194	78
2000	17	2	349	19	182	49	548	70	223	90	151	46	374	136	-174	66
2001	15	3	359	27	210	52	584	82	186	95	147	51	333	146	-251	64
2002	18	1	332	35	180	54	530	90	195	106	123	54	318	160	-212	70
2003	19	2	310	27	184	46	513	75	181	120	123	47	304	167	-209	92
2004	11	1	285	28	199	71	495	100	143	92	110	51	253	143	-242	43
2005	17	2	252	40	179	72	448	114	155	99	141	78	296	177	-152	63
2006	16	2	262	34	165	60	443	96	128	92	97	40	225	132	-218	36
2007	12	1	274	38	179	57	465	96	161	100	76	32	237	132	-228	36
2008	8	0	256	38	173	69	437	107	191	116	105	43	296	159	-141	52
2009	13	0	303	34	158	65	474	99	192	111	101	41	293	152	-181	53

Notes:

- The following tables are based on the numbers of clergy leaving and entering the clergy payroll (excluding the Diocese in Europe), which is held currently by the Church Commissioners. The losses and gains recorded include people that have moved to and from the Diocese in Europe, to and from posts which are funded by external agencies such as National Health Service Trusts, the Prison Service, mission agencies or schools, and between stipendiary and self-supporting ministry or full-time and part-time.

Full time equivalent stipendiary diocesan clergy 2009

Provinces of Canterbury and York (excluding Europe)

Diocese		Actual	Share	Number over or under (-) share	Percent over or under (-) share
1 Bath & Wells	C	208	197	11	6%
2 Birmingham	C	162	172	-10	-6%
3 Blackburn	Y	176	197	-21	-11%
4 Bradford	Y	102	102	0	0%
5 Bristol	C	128	128	0	0%
6 Canterbury	C	142	150	-8	-5%
7 Carlisle	Y	138	130	8	6%
8 Chelmsford	C	382	383	-1	0%
9 Chester	Y	257	240	17	7%
10 Chichester	C	299	271	28	10%
11 Coventry	C	116	124	-8	-7%
12 Derby	C	147	156	-9	-6%
13 Durham	Y	195	195	0	0%
14 Ely	C	146	138	8	6%
15 Exeter	C	214	228	-14	-6%
16 Gloucester	C	141	138	3	2%
17 Guildford	C	178	154	24	16%
18 Hereford	C	94	108	-14	-13%
19 Leicester	C	144	146	-2	-2%
20 Lichfield	C	314	306	8	3%
21 Lincoln	C	176	219	-43	-20%
22 Liverpool	Y	210	201	9	5%
23 London	C	532	490	42	9%
24 Manchester	Y	239	257	-18	-7%
25 Newcastle	Y	138	136	2	2%
26 Norwich	C	196	190	5	3%
27 Oxford	C	389	376	13	3%
28 Peterborough	C	137	151	-14	-10%
29 Portsmouth	C	108	108	-1	0%
30 Ripon & Leeds	Y	128	136	-8	-6%
31 Rochester	C	213	181	32	18%
32 St. Albans	C	257	258	-1	-1%
33 St. Edms & Ipswich	C	143	149	-7	-4%
34 Salisbury	C	213	207	6	3%
35 Sheffield	Y	155	157	-2	-1%
36 Sodor & Man	Y	13	18	-5	-28%
37 Southwark	C	351	322	29	9%
38 Southwell & Nottingham	Y	156	160	-5	-3%
39 Truro	C	109	113	-5	-4%
40 Wakefield	Y	144	152	-9	-6%
41 Winchester	C	205	217	-12	-6%
42 Worcester	C	138	133	5	3%
43 York	Y	225	258	-33	-13%
Total Province of Canterbury	C	5,976	5,913	63	1%
Totals Province of York	Y	2,276	2,339	-63	-3%
Totals CHURCH OF ENGLAND		8,252	8,252	0	0%

1. The 'Actual' is the number of full-time stipendiary clergy plus the whole-time equivalent of the part-time clergy

2. Shares are allocated as whole posts according to the clergy deployment formula



Projections of stipendiary diocesan clergy 2010 - 2014

Full time equivalence of stipendiary clergy: actuals and projections

	Year	Men	Women	Total
Actuals	2000	8,320	1,170	9,490
	2001	8,080	1,260	9,340
	2002	7,870	1,330	9,200
	2003	7,670	1,430	9,100
	2004	7,430	1,470	8,900
	2005	7,280	1,540	8,820
	2006	7,060	1,570	8,630
	2007	6,840	1,610	8,450
	2008	6,700	1,660	8,360
Projections	2009	6,530	1,720	8,250
	2010	6,340	1,730	8,070
	2011	6,130	1,730	7,860
	2012	5,930	1,730	7,660
	2013	5,760	1,730	7,490
	2014	5,600	1,730	7,330

Notes:

1 Figures are rounded to the nearest 10 and figures may not add up as a result.

Projections are intended to show the results of letting present trends continue, rather than as explicit predictions of the future. They are calculated by considering past clergy losses and gains, together with the number of ordinations to stipendiary ministry anticipated for 2010 and 2011, and applying them to the actual numbers of stipendiary clergy in post on 31st December 2009. After comparing the actual outturns with earlier projections for the same year, the mechanism is reviewed to reduce sources of inaccuracy.

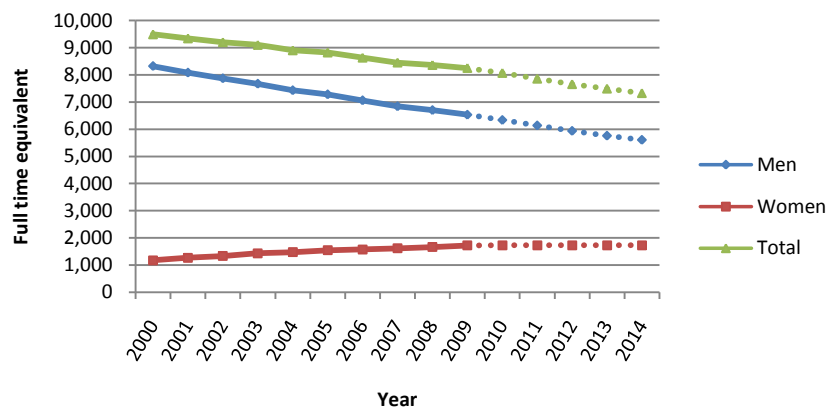
Estimates of retirement patterns take the age profile of present clergy into account and consider what proportion of clergy of similar age have retired in recent years. Because of a high proportion of clergy born shortly after 1945, retirements are expected to rise until 2012 and remain high thereafter. The annual losses in clergy numbers due to deaths in service and resignations are likely to decrease because they are dependent on the decreasing number of clergy at the start of the year.

Ordination numbers are estimated several years ahead in consultation with the theological institutions and dioceses and there will be factors influencing these figures that cannot be anticipated at this stage. The most recent information available anticipates 317 candidates will complete training in 2010 and 311 in 2011. A small allowance is made for a proportion to defer their entry into stipendiary ministry. From 2012, a moving average of stipendiary ordination figures starting from three past years and two anticipated years has been used.

The greatest uncertainty comes from movements into and out of stipendiary ministry aside from ordination, death and retirement. Some resign and leave completely. For others, there is two-way exchange with self-supporting ministry, chaplaincy, other provinces and the Diocese in Europe. Other clergy are remaining stipendiary but for altered hours. These projections apply a combined moving average of all such movements to future years. As transfers to self-supporting ministry and part-time working become increasingly prevalent, it may be that the projection mechanism will need to be refined to deal specifically with them.

The average age of ordinands to stipendiary ministry has risen since 1999 from 40 to 43 for women and from 35 to 38 for men. These projections assume that the ages will not rise any further, but the situation is continually reviewed.

If present trends continue, there will be fewer clergy in stipendiary ministry in future years. Numbers of women are expected to remain steady for several years but the decline will come especially from the high numbers of men reaching retirement age. In contrast, the number of non-stipendiary clergy continues to increase, gaining both new ordinations and former stipendiary clergy.



Projections of stipendiary diocesan clergy shares 2010 - 2014

Provinces of Canterbury and York (excluding Europe)

Diocese		2010	2011	2012	2013	2014
1 Bath & Wells	C	193	188	184	180	176
2 Birmingham	C	169	164	160	156	152
3 Blackburn	Y	194	189	184	179	175
4 Bradford	Y	100	98	96	94	92
5 Bristol	C	126	123	120	118	116
6 Canterbury	C	148	144	141	138	135
7 Carlisle	Y	128	124	121	118	115
8 Chelmsford	C	373	363	353	345	338
9 Chester	Y	236	229	223	217	212
10 Chichester	C	265	257	251	245	240
11 Coventry	C	121	118	115	112	110
12 Derby	C	153	149	145	142	139
13 Durham	Y	189	184	179	174	170
14 Ely	C	135	132	129	126	124
15 Exeter	C	224	218	213	208	204
16 Gloucester	C	135	131	128	125	122
17 Guildford	C	150	146	143	139	136
18 Hereford	C	106	103	100	98	96
19 Leicester	C	143	139	136	133	130
20 Lichfield	C	299	291	282	276	269
21 Lincoln	C	214	209	204	199	195
22 Liverpool	Y	196	190	184	179	175
23 London	C	482	470	457	449	440
24 Manchester	Y	252	246	239	234	229
25 Newcastle	Y	133	129	125	122	120
26 Norwich	C	186	181	177	173	169
27 Oxford	C	367	357	348	340	333
28 Peterborough	C	149	145	142	139	136
29 Portsmouth	C	105	103	100	98	95
30 Ripon & Leeds	Y	133	130	127	125	122
31 Rochester	C	177	172	168	164	160
32 St. Albans	C	252	246	240	234	230
33 St. Edms & Ipswich	C	146	142	139	136	133
34 Salisbury	C	203	198	193	188	184
35 Sheffield	Y	154	150	146	142	139
36 Sodor & Man	Y	17	17	16	16	16
37 Southwark	C	313	305	297	291	285
38 Southwell & Nottingham	Y	157	153	149	146	143
39 Truro	C	111	108	106	103	101
40 Wakefield	Y	149	145	141	138	135
41 Winchester	C	211	206	200	196	191
42 Worcester	C	130	126	123	120	117
43 York	Y	254	247	240	235	230
Totals Province of Canterbury	C	5,786	5,634	5,494	5,371	5,256
Totals Province of York	Y	2,292	2,231	2,170	2,119	2,073
Totals CHURCH OF ENGLAND		8,078	7,865	7,664	7,490	7,329

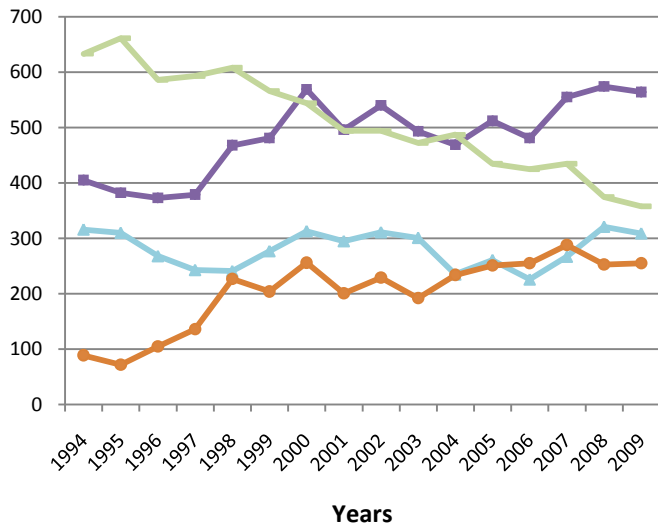
Notes:

1. These figures should be viewed with great caution and should be treated only as pointers to future diocesan shares assuming that current national trends are maintained.



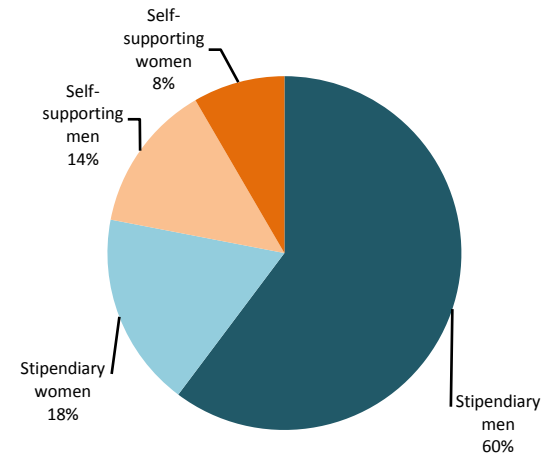
Ordinations and Reader admissions 1994 to 2009

	Stipendiary men	Stipendiary women	Stipendiary total	Self-supporting men	Self-supporting women	Self-supporting total	Total stipendiary and self-supporting	Readers
1994	244	72	316	55	34	89	405	633
1995	245	65	310	30	42	72	382	661
1996	201	67	268	46	59	105	373	586
1997	186	57	243	69	67	136	379	593
1998	174	67	241	100	127	227	468	608
1999	199	78	277	101	103	204	481	566
2000	223	90	313	106	150	256	569	544
2001	190	105	295	92	109	201	496	494
2002	199	112	311	101	128	229	540	494
2003	181	120	301	79	113	192	493	472
2004	143	92	235	94	140	234	469	487
2005	158	103	261	112	139	251	512	435
2006	128	98	226	106	149	255	481	425
2007	163	104	267	128	160	288	555	435
2008	197	124	321	103	150	253	574	375
2009	193	116	309	105	150	255	564	358

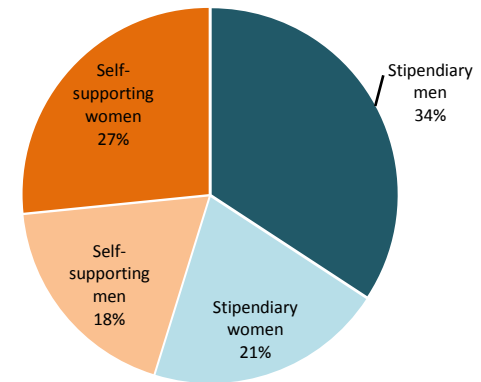


- Stipendiary total
- Self-supporting total
- Total stipendiary and self-supporting
- Reader admissions

1994



2009



Notes

- 1 Stipendiary figures are compiled from information supplied by the Church Commissioners.
- 2 Self-supporting (including OLM figures) are compiled from information supplied by the Ministry Division.
- 3 Stipendiary figures from 2005 onwards treat ordinations to part-time ministry as whole ordinations, not full-time equivalents.

Ordination of women resolutions and petitions

Provinces of Canterbury and York (including Europe)

Diocese		Total number of parishes at the end of 2009	Parishes where Resolution A applies	Parishes where Resolution B applies	Parishes where a petition for extended episcopal ministry applies	Bishops providing extended episcopal ministry
1 Bath & Wells	C	470	12	11	6 Provincial	+ Ebbsfleet
2 Birmingham	C	149	10	12	6 Provincial	+ Ebbsfleet
3 Blackburn	Y	225	37	64	11 Diocesan	+ Burnley
4 Bradford	Y	128	2	2	2 Regional	+ Beverley
5 Bristol	C	161	7	7	4 Provincial	+ Ebbsfleet
6 Canterbury	C	262	20	23	6 Provincial	+ Richborough
7 Carlisle	Y	263	15	21	2 Regional	+ Burnley
8 Chelmsford	C	466	48	53	26 Provincial	+ Richborough
9 Chester	Y	276	10	12	8 Regional	+ Beverley
10 Chichester	C	374	38	44	N/A Diocesan	
11 Coventry	C	198	10	13	7 Diocesan	+ Ebbsfleet
12 Derby	C	253	21	21	8 Provincial	+ Ebbsfleet
13 Durham	Y	230	29	33	21 Provincial	+ Beverley
14 Ely	C	307	9	12	4 Provincial	+ Richborough
15 Exeter	C	492	40	47	26 Diocesan	+ Plymouth
16 Gloucester	C	306	4	7	1 Provincial	+ Ebbsfleet
17 Guildford	C	164	4	4	3 Provincial	+ Richborough
18 Hereford	C	343	0	0	0 N/A	N/A
19 Leicester	C	236	11	11	3 Provincial	+ Richborough
20 Lichfield	C	423	46	50	23 Provincial	+ Ebbsfleet
21 Lincoln	C	507	26	29	4 Provincial	+ Richborough
22 Liverpool	Y	207	4	5	3 Provincial	+ Beverley
23 London	C	395	72	73	34 Diocesan	+ London + Fulham + Edmonton
24 Manchester	Y	269	32	33	9 Provincial	+ Beverley
25 Newcastle	Y	174	23	27	2 Provincial	+ Beverley
26 Norwich	C	563	15	20	2 Provincial	+ Richborough
27 Oxford	C	622	19	29	13 Provincial	+ Ebbsfleet
28 Peterborough	C	348	13	19	4 Provincial	+ Richborough
29 Portsmouth	C	142	14	17	9 Diocesan	+ Richborough
30 Ripon & Leeds	Y	166	8	8	5 Provincial	+ Beverley
31 Rochester*	C	215	14	17	10 Regional	+ Fulham
32 St. Albans	C	336	10	14	8 Provincial	+ Richborough
33 St. Edms & Ipswich	C	446	14	14	8 Provincial	+ Richborough
34 Salisbury	C	453	6	15	3 Provincial	+ Ebbsfleet
35 Sheffield	Y	173	32	36	22 Provincial	+ Beverley
36 Sodor & Man	Y	28	1	1	1 Provincial	+ Beverley
37 Southwark	C	291	21	30	17 Regional	+ Fulham
38 Southwell & Nottingham	Y	260	8	11	5 Provincial	+ Beverley
39 Truro	C	221	14	15	4 Diocesan	+ Ebbsfleet
40 Wakefield	Y	184	34	34	12 Diocesan	+ Pontefract
					Provincial	+ Beverley
41 Winchester	C	259	12	16	4 Provincial	+ Richborough
42 Worcester	C	175	6	6	4 Provincial	+ Ebbsfleet
43 York	Y	454	28	32	13 Diocesan	+ Whitby
44 Europe**	C	280	3	18	N/A N/A	N/A
Total Province of Canterbury	C	9,857	539	647	247	



Totals Province of York	Y	3,037	263	319	116
Totals CHURCH OF ENGLAND		12,894	802	966	363
Percentage of parishes			6%	7%	3%
Ten year percentage change			-4%	-1%	23%

Notes:

1. *Rochester: resolution/petition data as of 1 January 2008
2. **Europe: number of churches and congregations