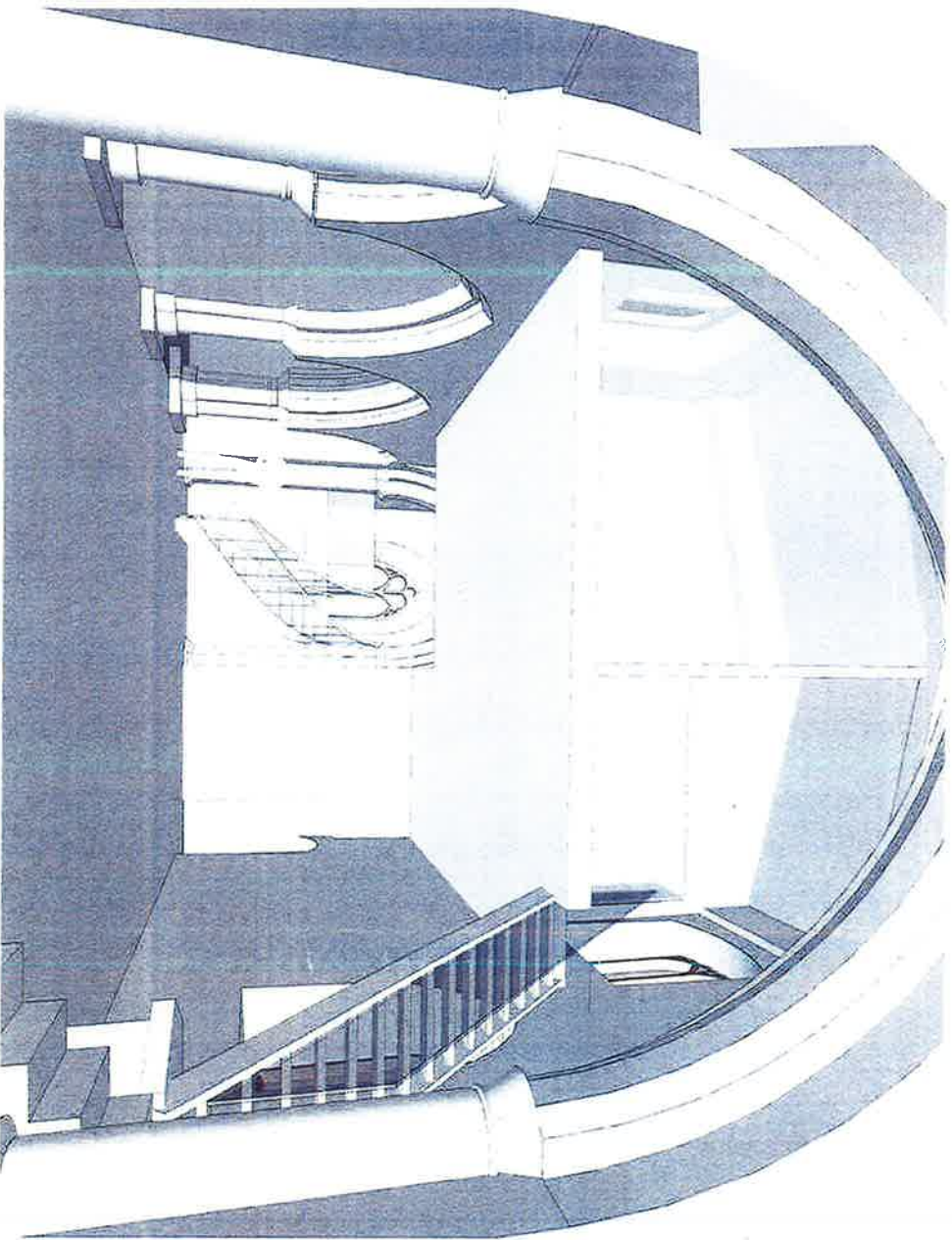


Annex D

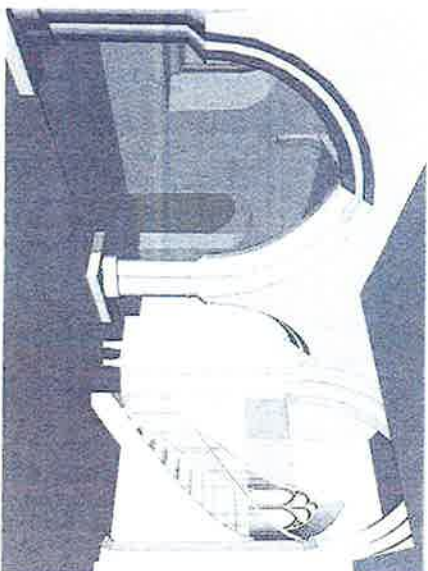
: D Images



VIEW TOWARDS TOWER



VIEW TOWARDS NAVE



VIEW TOWARDS TOWER AND MAIN ENTRANCE

3.1.2

Concept A - Preferred Design

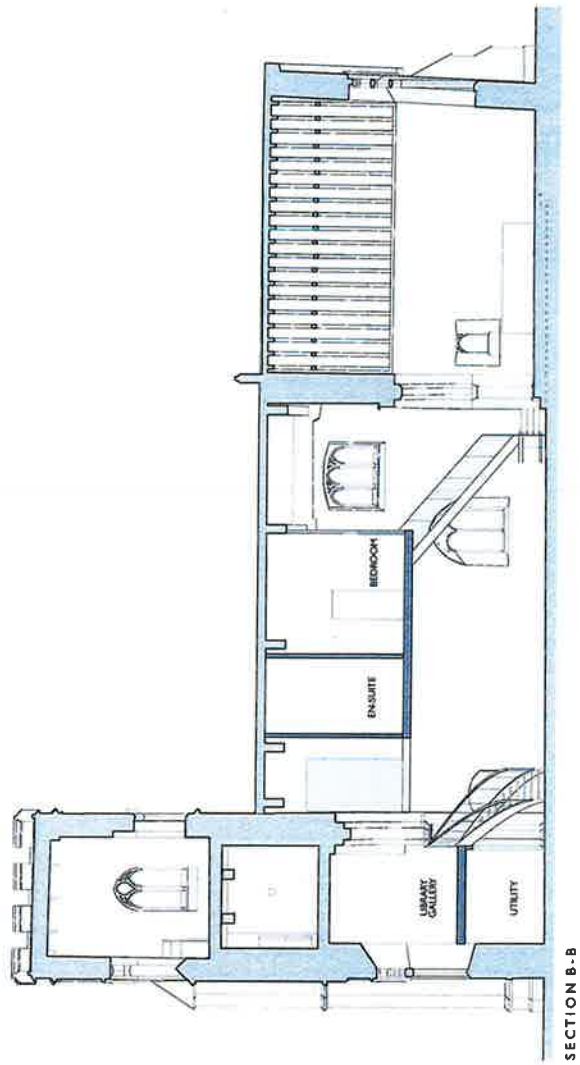
Acanthus Clews Architects
R1/A/16_024
St Peter's Church, Aspwood, Buckinghamshire



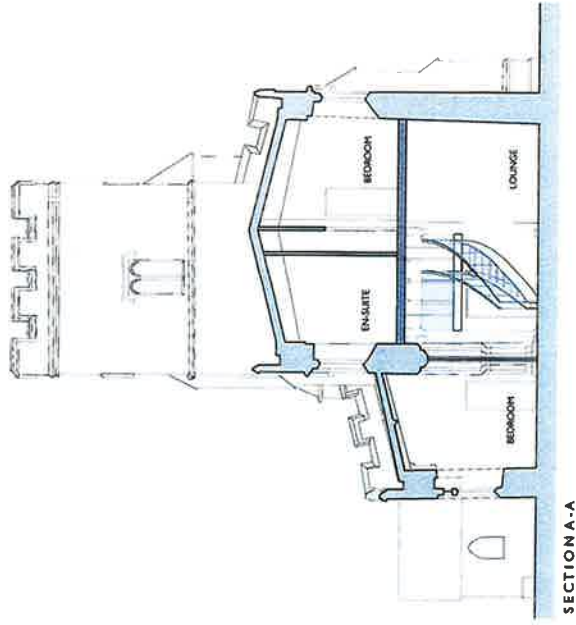
Proposed Sections

3.1.1

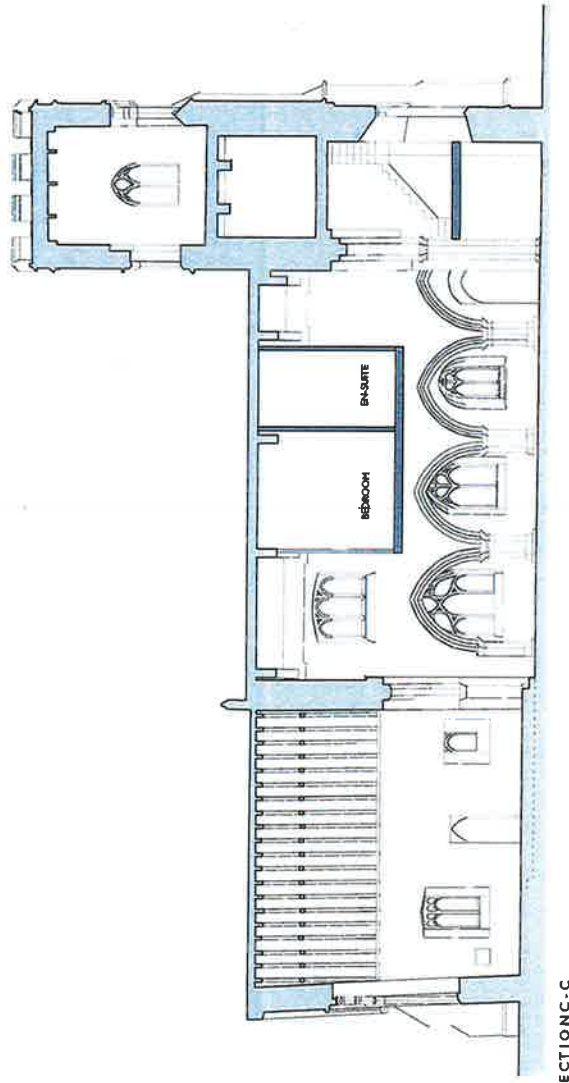
Concept A - Preferred Design



SECTION B-B



SECTION A-A



SECTION C-C



3.1

Concept A - Preferred Design

Summary:

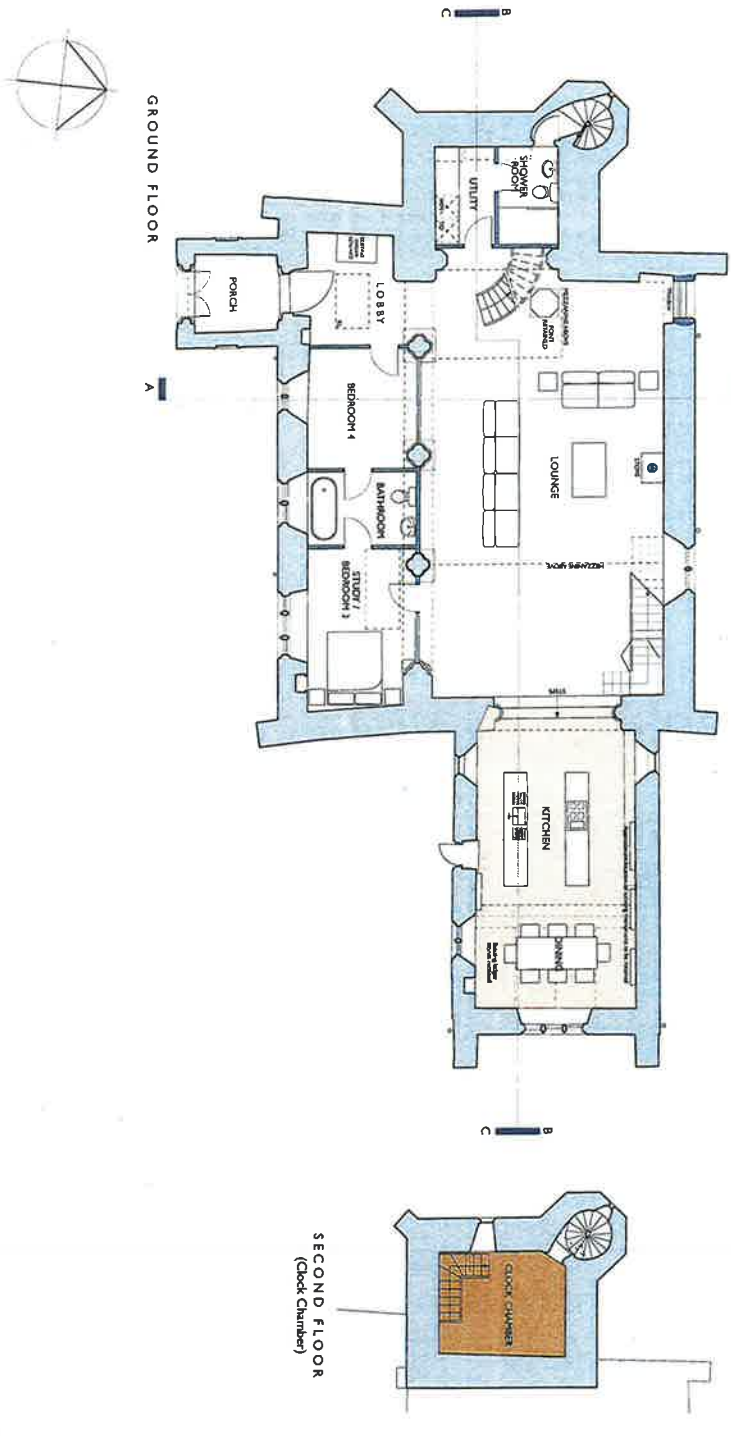
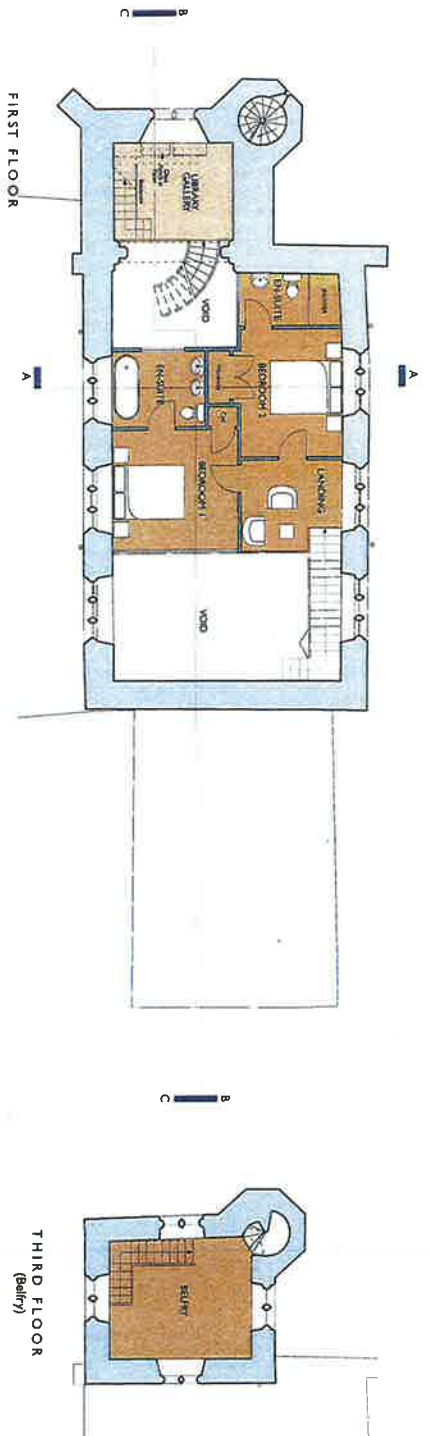
- 1st Floor to Nave incorporating 2 en suite bedrooms.
- Gallery floor to Tower for Library with dedicated stair.
- Kitchen/Dining to Chancel.
- Chancel floor brought level for service routes and flush door threshold.
- Stair to 1st Floor in location of pulpit, which is incorporated as a feature.
- South Aisle reordered to provide 2 bedrooms with Jack and Jill bathroom.
- Shower/WC and Utility to ground floor of tower.
- Large open plan living space to Nave.
- Residual doorway in North Elevation opened up to form window.
- Front retained in existing location.

Pros:

- Large open plan living area minimise alterations to existing plan.
- Historic features – font, monuments etc. are retained in existing locations.
- Double height spaces ensure Chancel and Tower arches remain open and clearly visible.
- Generous ceiling heights reflect non-domestic proportions of Church.
- Large landing at 1st floor creates separate living area with new views of church interior.
- Main body of Church – Nave and Chancel - remains a single space at ground floor.
- Arrangement of internal walls ensures window openings are undivided.

Cons

- Spatial form of Nave compromised by new 1st floor.
- Light from clerestory to Nave diminished by new 1st floor.
- No obvious master bedroom.
- Light from South Aisle to Nave diminished by screens added into arcade openings.



35

