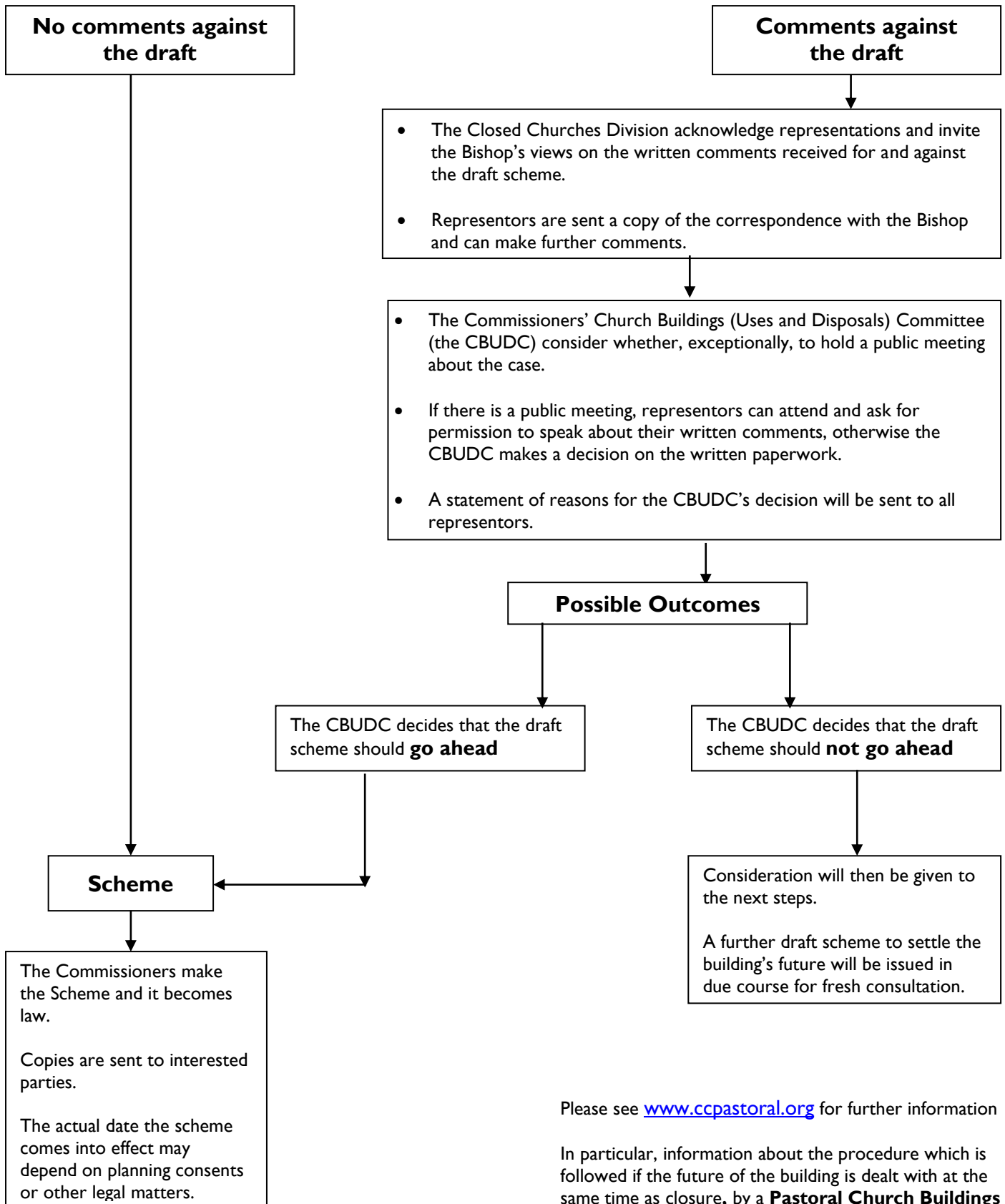


Church Commissioners' process for dealing with representations on draft Pastoral (Church Buildings Disposal) Schemes settling the future of closed church buildings



Please see www.ccpastoral.org for further information

In particular, information about the procedure which is followed if the future of the building is dealt with at the same time as closure, by a **Pastoral Church Buildings Scheme**, can be found on the Mission and Pastoral Committee pages of that site.