

Swainsthorpe Community Charity Trust

Ref: 287784

St. Peter's Church

Community Facility Project

2nd August 2012 - 30th November 2012



St. Peter's Church, Swainsthorpe

Work started on the £80,000 Community Facility Project (reordering of the nave) on Thursday 2nd August 2012 and was completed on 30th November 2012. The Architect was Ruth Blackman of Birdsall Swash and Blackman and the main contractor, Stephen Capper Restoration Ltd. The project was funded by grants and local fund raising. All are acknowledged in the appendix.

Community Facility Project – Reordering of the Nave and North Aisle

The Reordering of the Nave and North Aisle involved the removal of all fourteen pews and platforms. The voids under the platforms were filled, leveled and tiled to match the existing floor tiles but sufficiently different to show the historical changes over time. The blocked north door has been re-opened and a new external oak door and frame fitted. A new temporary kitchen, located against the west wall of the north aisle, has been installed and connected to the main sewer and mains water supply. An electrical water heater provides hot water for the sink and a Heatrae boiling water unit provides water for tea and coffee. Plug sockets have also been provided in the nave, vestry and kitchen with one external plug socket on the outside of the east wall of the north aisle. The existing radiant down heaters have been replaced with new eco friendly models. The lights in the chancel, nave and north aisle have been improved and an external light, to illuminate the path to the temporary toilet, has also been fitted. A sound loop system for the hard of hearing together with a sound system with microphones and connections for music players has been installed. A temporary external toilet, connected to the main sewer and with warm running water, has been located outside the new north door. Comfortable upholstered chairs replace the pews with seating for 80 people. A range of tables have also been provided.



The nave before work started



Pews and platforms removed exposing the voids

The first phase of the work involved the removal of the Victorian pews. All were pre-sold to members of the local community for £120 each. Some were found to have dry rot and in need of repair, most had wood worm which would have to be treated. Two pews were retained for use within the Church.

The old Victorian coke boiler (weighing almost half a ton) and a quantity of fuel were removed from the boiler and coke store located under the central aisle of the nave. The flue from the boiler ran under the floor to the vestry and then up through terra cotta pipes, previously warmed by lighting the Victorian warming stove, to the tower roof where the fumes were dispersed.



*Victorian coke burning boiler
Located under the central
Aisle of nave*



*Victorian flue warming
stove removed from the
vestry*



Boiler with coke still inside

The boiler and coke pits were filled with granite chippings and the nave floor compressed and leveled to take the breathable geotextile membrane, electrical wiring conduit, followed a layer of Techniclay, another layer of breathable geotextile membrane followed by a 100mm layer of limecrete which was finished with a smooth bed (screed) on which the new tiles were laid.



*Boiler house and coke store
filled with granite chippings*



Membrane and Techniclay



Limecrete slab on right

The filling and leveling of the nave and north aisle floors was completed by 30th August. The limecrete needed time to set and dry out before the final screed could be applied.



The nave and north aisle floors filled and leveled ready to receive the final screed and tiles

The sealed north door was unblocked ready for a new oak frame and door to be fitted. This will provide access to the temporary external toilet and will eventually be the entrance to the proposed new extension (phase 2) to the north aisle.



Unblocked north door



External view of unblocked north door

Work started on tiling the nave and north aisle floors on 12th August 2012 and was expected to take up to 14 working days to complete. The new tiles were carefully chosen by the Architect to match the colours of the existing. The new design layout (square) of the floor tiles was to be sufficiently different from the existing tiles (angle) to show the historical change over time. The original tiles, probably Victorian, were manufactured by Maw & Company of Broseley.



New design layout – square



Work started-12th August 2012



Day two



Day three



Day four



Day five



Day six



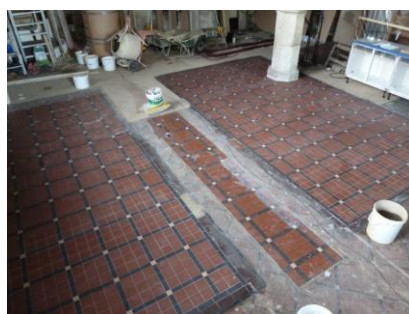
Day seven



Day eight



Day nine



*Day ten
Tiling complete just the
Grouting to finish*



*Day eleven
Floor tiling and grouting
completed*

The floor tiling was completed on 19th October 2012. These photographs show the protective covering placed over the existing tiles which would eventually be removed.

The new north door and frame, made out of European Oak, was prepared ready to fit. The frame was offered up first followed by the door which has two clear toughened glass panels.



Oak frame in position



New oak door fitted



Viewed from the outside



Pathway to the toilet

Work started on trenching for the water supply and drainage on 1st October 2012 and was expected to take 6 working days. An Archeologist would be in attendance when the ground works reached the Churchyard.

The mains water supply would come from a point in Church Road and connected to the Church water supply pipe and meter which was located on the edge of the boundary of the new house being constructed opposite the village notice board. An Easement was obtained from Saffron Housing, owners of 23, Church Road, to connect to the mains sewer of this property.



Location of the Water Meter



Water Pipe to Church



Drainage connected to 23, Church Road



Inspection Chamber 23, Church Road



Digging trench through Church boundary



Water and drainage going across the Churchyard



Across the Churchyard



Archeologist at Work



*Trench to proposed extension
Church kitchen and toilet*

The mains water supply and drainage pipes run across the Churchyard to an inspection chamber located on the edge of the boundary of the proposed new extension close to the hedge. The temporary external toilet will be located in almost the exact position of the toilet proposed in the new extension (directly opposite the north door) so the pipe work will be accessible when the decision is made to extend the north aisle (phase 2).



*Inspection chamber
with branch to the
temporary external toilet*



Connection to Church



Temporary toilet



Inside view

Fortunately no graves were disturbed during the trench digging but there was evidence of burials as the dig went through the Churchyard. A grave (perhaps two) was discovered along the boundary opposite the north aisle close to the hedge. Two headdresses (one belonging to a child and one to an adult) were recovered from the trench at two separate locations along this part of the dig. The archeologist suggests that they could be 200 to 300 years old borne out by a small headstone dated 1817 which was recovered from the trench in the same area. The tiaras have been taken away for closer examination and will be returned to us with a full report at a later date. The archeologist also suggested that the burial ground could have extended into, what is now the village green.



Adult headdress with metal leaves



Child's headdress with china roses

The kitchen was fitted against the west wall of the north aisle with the water heater positioned under the work top and a boiling water dispenser above the drainer. Pipe work in this area is protected from frost by a thermostatically controlled pipe warmer.



Kitchen, water heater and pipe work in position Kitchen complete with new boiling water unit

The new electrical radiant down heaters replaced the old and were more eco friendly and efficient. A new main electrical service board and trip switch were fitted and new wiring served the heaters, plug sockets, kitchen, outside toilet and outside socket and light.

With the project nearly complete the volunteer cleaners descend upon the building to give it a big clean up.



The project was eventually completed on time (30th November 2012) and a special vote of thanks was extended to the Architect, Ruth Blackman, and Stephen Capper the contractor.

The chairs and tables arrive and are unpacked and stacked away in an area reserved for their storage in the north aisle.



The very first event was to be a “Celebration Party” for all the local residents of Swainsthorpe. Preparation started by clearing the floor and determining how the tables and chairs should be laid out for the event.



Open flexible space which provides many layout options

The first official event, the “Cheese and Wine Celebration Party”, was held on Friday 7th December 2012 at 7.30pm and was organised by the PIGs (Project Ideas Group) for all local residents. Well over 60 people attended.



The new chairs were then laid out ready for, what was to be, the very first service in the reordered church since work started on the project some 6 months earlier in August 2012.



The special “Thank You” and Christingle Service took place on Sunday 9th December 2012 at 3pm.



Well over 70 people attended. The Bishop of Thetford dedicated the new facility and thanked the local community who generously donated towards the project and he also thanked those organisations who provided grant aid to the Swainsthorpe Community Charity Trust. The Rev'd Sally Gaze conducted a very moving service during which she thanked everybody who helped in the planning and construction of the new community facility.

Coffee Morning and Children's Craft plus a visit by Father Christmas
Held in the Community Facility – Saturday 15th December 2012



APPENDIX

Swainsthorpe Community Charity Trust

ACKNOWLEDGEMENT
TO THOSE PRIVATE INDIVIDUALS
AND
ORGANISATIONS
WHO SO GENEROUSLY
DONATED
AND
GAVE GRANTS
TOWARDS
THE SWAINSTHORPE COMMUNITY FACILITY PROJECT

All Churches Trust	1,000
Bishop's Council	6,929
Swainsthorpe Parochial Church Council	2,000
Anonymous Donation	1,000
Anonymous Donation	4,000
Norfolk R.C.C.	10,000
South Norfolk Council	2,000
Swainsthorpe Parish Council	5,838
Swainsthorpe Community Charity Trust	2,000
South Norfolk Council (Capital Grant)	10,000
Garfield Weston	5,000
The Rank Foundation	2,000
Lafarge	25,000
Norfolk Community Foundation	5,000
Waitrose (Charity Collection)	<u>170</u>
Total Pledged/Paid to Charity Trust:	<u>81,937</u>
 <u>Total Cost of the Project:</u>	 <u>81,878</u>
 <u>Surplus:</u>	 <u>59</u>

With grateful thanks

David Chapman
Chairman
Swainsthorpe Community Charity Trust
January 2013