

Foreword

Introduction

Church Statistics 2008/9 continues to expand measures of participation and affiliation collected by Church of England dioceses parishes and cathedrals. These measures are designed to reflect contemporary lifestyles and must be interpreted against the background of a growing number of government and other independent national surveys. National surveys continue to broadly endorse the 2001 government census results that indicate a continuing majority of the English population to be Christian. In summary, 72% of the population of England indicated their religious affiliation to be Christian, 6% of other faiths, 14% of no religion and 8% did not state their religion. Plans for the 2011 census will facilitate direct comparisons at national and lower geography levels.

In a pluralistic society, Christian denominations continue to play a significant role in the life of the nation. Approaching half of the adult population regards itself as Anglican (Opinion Research Business national poll 2009). Church Statistics 2008/9 provides more detailed geographical evidence of the continued involvement of the Church of England in the everyday lives of men, women and children at the beginning of the twenty-first century. This builds on similar information first published in Church Statistics 2002 and continues to be facilitated by the successful completion of the digitisation of the parish boundaries sponsored jointly by the Church of England dioceses and the Church Commissioners.

New attendance statistics

Following a major review of annual statistical information collection from parishes, new attendance measures were designed with dioceses during the summer of 2000. These are generally based on a four week count by parishes of their attendance levels at church worship in October. There is no single period in the year when church attendance could be said to be 'normal' or even 'average' but October is accepted across the Church of England and by our ecumenical partners as the easiest and most comparable month in which to carry out this quantitative exercise.



It would be wrong to make direct comparisons between the number counted in church services across October and the figures that churches have traditionally estimated as their “usual Sunday attendance”. Examination of the attendance levels collated in this publication in ‘All age church attendance 2000 to 2008’ and ‘Parochial Church attendance 2000 to 2008,’ reveal a larger church and fairly static levels of church attendance. On average 1.1 million people attended church-based services of worship each week in 2008, slightly under one million of these on Sundays. Numbers fluctuated week by week, among adults on average doubling at points across the month while almost quadrupling among children and young people. Statistics included here show that young people and children are attending church and church related activities in significant numbers. Across a typical month in the year parish church and cathedral worship attracted 1.7 million people but only 1.3 million of these attended on Sundays. The Church is indeed a seven days a week Church, and in recent years a similar proportion (a third) of dioceses have seen increases in their all age church attendance levels as mapped in the ‘All age church attendance 2008.’

National surveys indicate that 17% of adults in Britain attend religious services at least once every month (ORB Survey 2009). We are adapting the annual church attendance counts to include attendance at fresh expressions of church and also beginning to monitor attendance at chapels in universities and other places of worship. The growing ministry of chaplains in shopping centres, hospitals and other places has yet to be numerically reflected.

Easter and Christmas are festivals in the Christian year when traditionally many attend special occasions of worship in our parish churches and cathedrals. Charts of cathedral worship included for the first time reveal steadily increasing numbers throughout the year. On Christmas Day/Eve 2008 2.6 million people attended church and cathedral worship, while 1.4 million attended on Easter Day. The importance of these Christian festivals in people’s lives is evident in that Christmas services attracted over twice the average weekly attendance of our parish churches and cathedrals. Figures collected in previous years were directly comparable. **In 2009, 35% of adults in Britain attended a Christmas service and 24% an Easter service (ORB Survey 2009).**

Occasional offices

The church has traditionally monitored electoral roll and baptism levels, but from 2000 parishes and cathedrals has been asked to estimate the number of occasions where people received direct pastoral contact through each of the occasional offices. Marriages can be performed in recognized places other than churches and cathedrals. The tables 'Total marriages in England' and 'First marriages, England and Wales' (based on local authority registrars' returns) indicate that just under a quarter of marriages were performed by Church of England ministers. Local churches had significant opportunities for mission and ministry through over 390,900 occasional offices performed by their ministers in 2008. Funerals account for approaching half of these which is a significant pastoral load for many clergy. The table 'Parochial marriages and funerals 2008' shows that 39% of deaths in England are marked with Church of England funerals. Baptisms and thanksgivings represented over a third of the occasional offices, marriages and blessings of civil marriages about one in seven. At these essentially family and community events, local churches have unique opportunities for contact among a wide constituency and national public attitude surveys show this to be valued by the Christian public. **In 2009, 56% of adults in Britain attended a religious service for a funeral, 44% to celebrate a wedding and 36% a baptism/christening (ORB Survey 2009).**

Licensed Ministers

All God's people are called to exercise their ministry in his world and in his Church. The statistics of this report relate to ministries which are nationally licensed. Reflecting the older demographic profile of the adult population the number of stipendiary clergy has dropped since the turn of the millennium. This is projected to continue at a similar level with the net loss over the period 2009 to 2013 approaching 600 from a current total of 8,250 FTE. (These figures include clergy with full-time appointments and those with part-time appointments aggregated to their full-time equivalents. Europe, due to the special nature of its chaplaincies, is excluded.) These projections take into account the expected number of ordinations to stipendiary ministry. This figure stood at 309 in 2009. It is estimated to remain fairly static at 317 in 2010 and 311 in 2011. For the years 2012 onwards a moving average of the previous three years ordination figures has been used. The number of people entering stipendiary ministry is not sufficient to replace those who are retiring. Detailed figures on the age structure are contained in 'Clergy age profiles and age structure' tables.

Among those licensed as unpaid ministers attached to parishes, the increasing number of self-supporting ministers including ordained local ministers stood at 3,100 in 2009, an increase of nearly 50% between 2000 and 2009. Dioceses benefit from a growing number of lay ministers and retired clergy. However across the country the number of licensed readers has decreased by almost 14% over the same period. In 2009 there were 7,472 licensed readers, (excluding readers with permission to officiate and active emeriti).

The number of women clergy, stipendiary and non-stipendiary, continues to rise. In 2009 there were 1,649 women in full-time stipendiary diocesan appointments compared with 1,466 in 2005 and 1,140 in 2000, generating a rise of approaching a half (45%) (these figures include the Diocese in Europe). Women make up one in five (20%) of stipendiary parochial clergy. Out of every eight incumbents one is a woman (13%). The equivalent figure including clergy of incumbent status is more than one in five clergy (17%). Of a total of 358 dignitaries in 2009, 32 were women, nine more than 2005 and twenty more than 2000. Women in self-supporting ministry in 2009 made up over half (51%) of the total. For licensed readers the equivalent proportion 49%.

The Church also benefits from the ministry of 341 licensed lay workers and Church Army evangelists, of whom 30 are ordained; 472 professed members of religious communities, of whom 87 are ordained, and 1,243 chaplains working with mission agencies, the armed services, in hospitals, prisons, schools, higher and further education. In each of these categories of ministry there are fewer people than in 2000. At the turn of the millennium there were 257 Church Army evangelists, 729 professed members of religious communities and 1,258 chaplains. A further 271 self-supporting clergy minister within dioceses but outside the formal parochial system.

Since 1994 when all categories of licensed ministry were opened to men and women, the total number of those entering licensed ministry in the Church of England (clergy ordinations and reader admissions combined) has fallen (by 10%) similar levels, falling only slightly, (by 5%) from 1038 to 922 in 2009. Over the same period, the total number of ordinations has risen by 39% from 405 in 1994 to 564 in 2009 while the number of reader admissions correspondingly decreased by 43% from 633 in 1994 to 358 in 2009. In particular, the number of people ordained to stipendiary ministry has remained similar at 316 in 1994 and 309 in 2009 compared with approaching a three-fold increase in non-stipendiary ordinations (89 in 1994 to 255 in 2009). In addition, it is worth noting that just over half (55%) of those ordained in 2009 entered stipendiary ministry compared to 48% in 2007 and over three quarters (78%) in 1994.

The average age of full-time stipendiary diocesan clergy is 51 years and one in five (22%) of full-time stipendiary diocesan clergy are aged 60 and over. Two-thirds (66%) are aged between 40 and 59 years, and 12% under 40. The average age of self-supporting diocesan clergy is 58 years while half (50%) of self-supporting ministers (including OLM's) and 51% licensed readers are aged 60 and over. The majority of the remaining half are in the 40 to 59 age group leaving just 3% of self-supporting ministers and less than 3% of readers under 40.

The total number of recommendations for training for ministry was 491 in 2009, 104 less than in 2007 and with 286 (58%) under 40 years of age.

The number of readers in training has fallen by approaching a third (30%) since 2000 from 1,315 to 926 in 2009.

Financial giving

In the autumn of 2008, the “Credit Crunch” hit the UK economy. For many in the charitable sector, there was an immediate and significant financial impact. However, thanks to the commitment of church givers, 2008 parish incomes managed to increase when compared with the previous year, to £925 million. A 1.3% increase in donor income was the smallest percentage increase for many years, but this should be seen positively, given the wider economic picture and the downturn seen in the wider charitable sector.

Regular, planned giving continues to be the core of church finances. In 2008, parishes received over £296 million from 628,000 givers (or more precisely giving units where some will represent two donors) at an average of £9.06 per week. Most of these givers are able to give through Gift Aid, and over £80 million was reclaimed by parishes from HMRC.

Income received by parishes in 2008 from legacies again reached record levels. The size of the average gift has again increased, and it should be noted that the number of legacies for 2007 and 2008 appears low due to a change in the data collection questionnaire in 2007. This now asks for each legacy to be recorded only once, even if income is received in more than one financial year.

Income from dividends, interest and property rose by over 10% for the second year running, with parishes receiving £58 million. This is expected to decline in 2009 and 2010, due to lower interest rates and stock market returns.

Outward giving from PCCs to mission organizations and other charities was £52 million, a very significant contribution to wider mission and charitable work. Parish Share contributions just fell short of £300 million, and there was £194 million of capital expenditure.

Summary

Today people support their local churches, chapels and cathedrals in many different ways. A national opinion survey in October 2009 by Opinion Research Business confirmed that since the turn of the millennium 85% of adults visit a local church or chapel every year for a wide range of activities alongside attendance at church worship. While the quantitative information is not fully comprehensive, it does provide a healthy picture of the variety of local church life. Church attendance patterns, the role of the occasional offices, the increased diversity of ordained and lay ministries, financial giving and other measures of church support are all continuing to evolve at the turn of the millennium in ways which are beginning to capture the interest of many serious religious commentators.

We are particularly grateful to the dioceses and the parishes for continuing to embrace new aspects of the annual parochial return exercise. Their co-operation continues to remain crucial to the successful gathering of the information required for this publication, and we are encouraged that they too are finding the results useful for their own forward planning. This edition includes as much appropriate information as possible from the Diocese in Europe and from diocesan cathedrals.

To view an online version of the book containing additional maps in colour please visit the Church of England web site at:

www.churchofengland.org/about-us/facts-stats/research-statistics.aspx

where statistics will be updated throughout the year.

*Research and Statistics Department
Archbishops' Council, July 2010*

Summary diocesan statistics 2008/9

Provinces of Canterbury and York (excluding Europe)

Research
& Statistics

Ref. no.	Diocese	Population (000s)		Area (square miles)	Population density (persons per sq mile)	Number of:			Full time stipendiary parochial clergy (men and women)	Number of stipendiary parochial clergy per:	
		(2008)				Benefices	Parishes	Churches		Parish	1000 population
1	Bath & Wells	C	911 (26)	1,614 (11)	565 (30)	198 (12)	470 (5)	566 (9)	187 (15)	0.40 (37)	0.21 (4)
2	Birmingham	C	1,436 (12)	292 (41)	4,919 (3)	142 (28)	149 (40)	195 (40)	144 (22)	0.97 (4)	0.10 (43)
3	Blackburn	Y	1,306 (14)	878 (27)	1,487 (15)	189 (15)	225 (28)	281 (29)	159 (20)	0.71 (14)	0.12 (37)
4	Bradford	Y	683 (37)	920 (26)	743 (27)	104 (41)	128 (42)	163 (42)	84 (41)	0.66 (22)	0.12 (36)
5	Bristol	C	935 (25)	474 (36)	1,972 (9)	111 (38)	161 (39)	207 (39)	103 (37)	0.64 (23)	0.11 (41)
6	Canterbury	C	875 (28)	970 (25)	903 (26)	155 (24)	262 (22)	329 (24)	127 (27)	0.48 (29)	0.15 (19)
7	Carlisle	Y	491 (41)	2,477 (4)	198 (42)	123 (35)	263 (21)	344 (20)	124 (30)	0.47 (30)	0.25 (2)
8	Chelmsford	C	2,840 (2)	1,531 (12)	1,855 (10)	328 (2)	466 (6)	600 (6)	352 (3)	0.76 (10)	0.12 (34)
9	Chester	Y	1,565 (8)	1,017 (22)	1,539 (14)	226 (8)	276 (19)	370 (18)	234 (8)	0.85 (7)	0.15 (17)
10	Chichester	C	1,546 (9)	1,459 (14)	1,060 (23)	298 (4)	374 (12)	505 (10)	276 (6)	0.74 (11)	0.18 (9)
11	Coventry	C	797 (33)	686 (30)	1,162 (19)	134 (30)	198 (32)	241 (34)	99 (39)	0.50 (28)	0.12 (33)
12	Derby	C	1,010 (22)	997 (23)	1,013 (24)	159 (23)	253 (25)	332 (23)	136 (24)	0.54 (25)	0.13 (25)
13	Durham	Y	1,456 (11)	987 (24)	1,475 (16)	192 (13)	230 (27)	281 (29)	169 (18)	0.73 (12)	0.12 (40)
14	Ely	C	705 (36)	1,507 (13)	468 (34)	192 (13)	307 (16)	334 (22)	124 (30)	0.40 (35)	0.18 (10)
15	Exeter	C	1,139 (18)	2,575 (3)	442 (35)	189 (15)	492 (4)	617 (4)	196 (12)	0.40 (36)	0.17 (11)
16	Gloucester	C	619 (39)	1,140 (20)	543 (31)	115 (36)	306 (17)	394 (16)	125 (29)	0.41 (34)	0.20 (5)
17	Guildford	C	995 (23)	538 (35)	1,850 (11)	141 (29)	164 (38)	217 (37)	160 (19)	0.98 (3)	0.16 (13)
18	Hereford	C	309 (42)	1,660 (10)	186 (43)	115 (36)	343 (14)	417 (13)	82 (42)	0.24 (43)	0.27 (1)
19	Leicester	C	945 (24)	835 (29)	1,132 (21)	111 (38)	236 (26)	321 (25)	122 (33)	0.52 (26)	0.13 (30)
20	Lichfield	C	2,003 (5)	1,744 (9)	1,148 (20)	275 (5)	423 (10)	572 (8)	280 (5)	0.66 (21)	0.14 (23)
21	Lincoln	C	1,013 (21)	2,673 (1)	379 (39)	215 (9)	507 (3)	640 (2)	155 (21)	0.31 (41)	0.15 (15)
22	Liverpool	Y	1,519 (10)	389 (39)	3,905 (5)	177 (20)	207 (31)	257 (33)	200 (11)	0.97 (5)	0.13 (27)
23	London	C	3,717 (1)	277 (42)	13,418 (1)	404 (1)	395 (11)	475 (12)	481 (1)	1.22 (1)	0.13 (29)
24	Manchester	Y	1,980 (6)	415 (37)	4,771 (4)	215 (9)	269 (20)	344 (20)	217 (9)	0.81 (9)	0.11 (42)
25	Newcastle	Y	784 (34)	2,110 (6)	372 (40)	134 (30)	174 (35)	241 (34)	119 (35)	0.68 (19)	0.15 (16)
26	Norwich	C	867 (29)	1,804 (8)	481 (33)	186 (19)	563 (2)	632 (3)	173 (17)	0.31 (40)	0.20 (7)
27	Oxford	C	2,198 (4)	2,221 (5)	990 (25)	302 (3)	622 (1)	816 (1)	362 (2)	0.58 (24)	0.16 (12)
28	Peterborough	C	840 (31)	1,149 (19)	731 (28)	146 (27)	348 (13)	385 (17)	123 (32)	0.35 (39)	0.15 (18)
29	Portsmouth	C	748 (35)	408 (38)	1,833 (12)	128 (34)	142 (41)	173 (41)	97 (40)	0.68 (20)	0.13 (28)
30	Ripon & Leeds	Y	837 (32)	1,359 (17)	616 (29)	111 (38)	166 (37)	261 (32)	115 (36)	0.69 (17)	0.14 (24)
31	Rochester	C	1,239 (16)	542 (34)	2,287 (6)	189 (15)	215 (30)	265 (31)	196 (12)	0.91 (6)	0.16 (14)
32	St. Albans	C	1,752 (7)	1,116 (21)	1,570 (13)	203 (11)	336 (15)	407 (14)	235 (7)	0.70 (16)	0.13 (26)
33	St. Edms & Ipswich	C	635 (38)	1,439 (15)	441 (36)	130 (32)	446 (9)	477 (11)	127 (27)	0.28 (42)	0.20 (6)
34	Salisbury	C	893 (27)	2,046 (7)	436 (37)	161 (22)	453 (8)	575 (7)	193 (14)	0.43 (33)	0.22 (3)
35	Sheffield	Y	1,196 (17)	576 (32)	2,077 (7)	153 (25)	173 (36)	212 (38)	141 (23)	0.82 (8)	0.12 (38)
36	Sodor & Man	Y	80 (43)	221 (43)	362 (41)	28 (43)	28 (43)	45 (43)	10 (43)	0.36 (38)	0.12 (32)
37	Southwark	C	2,537 (3)	317 (40)	8,003 (2)	267 (6)	291 (18)	365 (19)	320 (4)	1.10 (2)	0.13 (31)
38	Southwell & Nottingham	Y	1,081 (20)	847 (28)	1,276 (17)	168 (21)	260 (23)	307 (26)	133 (25)	0.51 (27)	0.12 (35)
39	Truro	C	535 (40)	1,390 (16)	385 (38)	129 (33)	221 (39)	307 (26)	100 (38)	0.45 (31)	0.19 (8)
40	Wakefield	Y	1,118 (19)	557 (33)	2,006 (8)	148 (26)	184 (33)	239 (36)	130 (26)	0.71 (15)	0.12 (39)
41	Winchester	C	1,291 (15)	1,216 (18)	1,062 (22)	189 (15)	259 (24)	406 (15)	186 (16)	0.72 (13)	0.14 (20)
42	Worcester	C	845 (30)	671 (31)	1,260 (18)	103 (42)	175 (34)	286 (28)	120 (34)	0.69 (18)	0.14 (22)
43	York	Y	1,416 (13)	2,661 (2)	532 (32)	263 (7)	454 (7)	610 (5)	201 (10)	0.44 (32)	0.14 (21)
Totals Province of Canterbury		C	36,176	35,291	1,025	5,415	9,577	12,056	5,381	0.56	0.15
Totals Province of York		Y	15,511	15,414	1,006	2,231	3,037	3,955	2,036	0.67	0.13
Totals CHURCH OF ENGLAND			51,687	50,705	1,019	7,646	12,614	16,011	7,417	0.59	0.14

Notes:



- 1 The figures in brackets give rankings. Thus in terms of area, Bath and Wells is the 11th largest diocese, Birmingham is the 41st.
- 2 C and Y denote dioceses in the Provinces of Canterbury and York respectively.
- 3 Diocesan population figures are based on the 2008 mid-year estimates. Crown copyright material is reproduced under Class Licence Number C01W0000297 with the permission of the Controller of HMSO. However as government boundaries do not match diocesan boundaries there has to be an element of estimation.

- 1 Area figures are calculated from material supplied by ONS and the Church Commissioners.
- 5 Benefices with parishes attached as listed in the Parish Register maintained by the Research and Statistics Dept as at 31 December 2009.
- 6 Parishes and churches are as listed in the Parish Register maintained by the Research and Statistics Dept as at 31 December 2009. Includes 114 churches with no buildings.
- 7 Clergy as at 31 December 2009. Source: Church Commissioners. Does not include 330 part-timers.
- 8 The Diocese in Europe is composed of 280 separate congregations.

Average weekly attendances 2007 and 2008: Total attendances (adults, children and young people)

Provinces of Canterbury and York (including Europe and Cathedrals)

Research
& Statistics

			Average weekly			Average Sunday			Usual Sunday		
Diocese			2008	2007	per cent change	2008	2007	per cent change	2008	2007	per cent change
1 Bath & Wells	C		27,800	28,100	-1	23,700	24,200	-2	20,900	22,500	-7
2 Birmingham	C		19,200	20,100	-4	16,200	17,600	-8	14,700	15,100	-2
3 Blackburn	Y		32,300	34,200	-6	27,800	28,600	-3	22,400	23,200	-3
4 Bradford	Y		12,200	12,500	-2	10,200	9,900	2	8,700	8,700	0
5 Bristol	C		16,000	16,600	-4	13,400	13,400	0	12,300	13,200	-7
6 Canterbury	C		22,600	23,200	-3	18,900	19,800	-4	16,300	17,500	-7
7 Carlisle	Y		16,800	18,400	-9	13,900	15,100	-8	11,300	11,800	-5
8 Chelmsford	C		42,200	42,700	-1	36,200	37,600	-4	32,500	33,600	-3
9 Chester	Y		39,100	39,800	-2	32,500	32,800	-1	27,500	28,400	-3
10 Chichester	C		47,400	48,700	-3	39,100	40,900	-4	36,200	37,000	-2
11 Coventry	C		16,200	17,100	-5	14,100	14,800	-4	13,200	13,000	1
12 Derby	C		18,200	17,300	5	16,100	15,100	7	14,000	13,200	6
13 Durham	Y		21,100	22,500	-6	17,400	18,300	-5	15,300	15,400	-1
14 Ely	C		20,100	19,000	6	17,100	16,000	7	14,800	14,200	4
15 Exeter	C		24,900	28,400	-12	22,700	24,500	-7	21,700	23,800	-9
16 Gloucester	C		21,700	22,600	-4	18,000	19,400	-7	15,500	18,300	-15
17 Guildford	C		29,300	28,900	2	25,100	24,800	1	22,700	23,300	-3
18 Hereford	C		12,700	12,900	-1	11,100	11,200	-1	7,900	9,400	-15
19 Leicester	C		15,800	16,800	-6	14,400	14,900	-3	12,600	12,100	5
20 Lichfield	C		38,100	37,900	1	30,400	30,700	-1	27,600	28,000	-1
21 Lincoln	C		25,500	26,800	-5	21,000	21,700	-3	17,400	17,000	3
22 Liverpool	Y		29,000	29,400	-1	24,500	25,100	-3	20,400	20,800	-2
23 London	C		78,800	79,800	-1	60,700	62,400	-3	58,000	59,100	-2
24 Manchester	Y		35,700	34,900	2	29,700	29,700	0	24,700	31,200	-21
25 Newcastle	Y		14,400	14,900	-4	11,900	12,500	-5	9,700	10,600	-8
26 Norwich	C		21,400	22,800	-6	19,100	19,800	-3	16,000	16,200	-1
27 Oxford	C		58,300	58,200	0	50,500	50,600	0	44,600	45,300	-2
28 Peterborough	C		20,000	19,600	2	16,200	16,700	-3	14,400	14,600	-1
29 Portsmouth	C		14,100	14,800	-5	12,400	13,000	-5	11,400	11,700	-2
30 Ripon & Leeds	Y		17,100	14,900	15	14,200	12,700	12	12,300	11,000	11
31 Rochester	C		30,300	30,200	0	25,900	25,800	1	23,500	23,900	-2
32 St. Albans	C		39,200	38,900	1	30,900	30,900	0	26,300	27,400	-4
33 St. Edms & Ipswich	C		20,300	19,600	4	17,600	17,900	-1	15,200	15,200	0
34 Salisbury	C		32,100	32,600	-1	26,800	27,400	-2	23,400	24,400	-4
35 Sheffield	Y		19,000	20,000	-5	15,300	16,300	-6	13,000	14,200	-8
36 Sodor & Man	Y		2,600	2,700	-6	2,100	2,300	-8	1,800	1,800	-3
37 Southwark	C		46,800	45,700	2	41,800	40,900	2	36,100	33,400	8
38 Southwell & Nottingham	Y		19,400	18,600	4	15,700	16,000	-2	13,500	14,100	-4
39 Truro	C		13,700	13,500	2	11,600	11,600	0	10,200	10,200	-1
40 Wakefield	Y		17,200	18,300	-6	14,500	15,400	-6	12,600	13,400	-6
41 Winchester	C		35,000	35,900	-3	28,600	29,400	-3	26,700	26,900	-1
42 Worcester	C		16,000	16,300	-2	13,000	13,400	-3	12,000	11,800	2
43 York	Y		32,200	31,100	3	25,500	25,600	0	21,600	21,100	2
44 Europe	C		12,600	12,400	2	11,900	11,600	2	11,500	11,200	2
Totals Province of Canterbury	C		836,500	847,300	-1	704,600	717,700	-2	629,700	642,600	-2
Totals Province of York	Y		308,100	312,300	-1	255,200	260,300	-2	214,900	225,800	-5
Totals CHURCH OF ENGLAND			1,144,600	1,159,700	-1	959,800	978,000	-2	844,600	868,300	-3



- 1 Children and young people are for the majority of dioceses defined as under the age of 16 years.
- 2 Average weekly attendace = the average number of attenders at church services throughout the week typically over a four week period in October.
- 3 Average Sunday attendance = the average number of attenders at Sunday church services typically over a four week period in October.
- 4 Attendance figures have only been included where local churches held at least one church based service (which included adult presence) during the week under examination.

Parochial church attendance 2000 to 2008

Provinces of Canterbury and York (including Europe)

Research
& Statistics

Weekly attendance

Year	Adult weekly attendance			Children and Young People weekly attendance			All age weekly attendance			Monthly attendance
	Highest (000s)	Average (000s)	Lowest (000s)	Highest (000s)	Average (000s)	Lowest (000s)	Highest (000s)	Average (000s)	Lowest (000s)	All age (000s)
2000*	1,451	1,031	742	455	243	120	1,855	1,274	885	1,855
2001	1,332	976	727	416	229	113	1,708	1,205	862	1,708
2002	1,296	941	693	424	229	111	1,682	1,170	825	1,682
2003	1,312	957	714	430	230	110	1,704	1,187	844	1,704
2004	1,308	951	706	437	235	111	1,707	1,186	839	1,707
2005	1,302	942	696	444	232	107	1,706	1,174	823	1,706
2006	1,294	937	690	442	228	103	1,694	1,163	812	1,694
2007	1,303	940	691	424	219	99	1,690	1,160	811	1,690
2008	1,267	919	679	438	225	100	1,667	1,145	800	1,667

Sunday Attendance

Year	Adult Sunday attendance			Children and Young People Sunday attendance			All age Sunday attendance			Christmas attendance
	Highest (000s)	Average (000s)	Lowest (000s)	Highest (000s)	Average (000s)	Lowest (000s)	Highest (000s)	Average (000s)	Lowest (000s)	All age (000s)
2000	1,191	878	660	300	180	103	1,464	1,058	781	2,851
2001	1,170	868	657	285	173	99	1,425	1,041	774	2,608
2002	1,143	838	623	278	167	94	1,395	1,005	733	2,600
2003	1,156	853	645	272	164	92	1,401	1,017	755	2,652
2004	1,147	846	638	272	164	91	1,394	1,010	746	2,629
2005	1,136	836	629	264	158	87	1,374	993	733	2,786
2006	1,123	828	622	262	155	84	1,361	983	722	2,994
2007	1,129	830	622	252	148	79	1,357	978	718	2,657
2008	1,099	812	611	249	148	80	1,322	960	707	2,647

Notes:

- 1 Children and young people are under 16 years of age while adults are 16 years of age or over.
- 2 From 2000 church attendance figures are calculated typically from a four-week count in October.
- 3 *In 2000 attendance at midweek weddings and funerals was included.
- 4 An approximation to monthly attendance can be taken from the highest weekly attendance counted over a typical month.
- 5 "Highest Sunday/weekly attendance" = the sum of the highest Sunday (weekly) attendance over the four week period.
- 6 Lowest Sunday/weekly attendance = the sum of the lowest Sunday (weekly) attendances over the four week period.
- 7 Attendance figures have only been included where local churches held at least one church based service (which included adult presence) during the week under examination.



Average weekly attendances 2008: adults, children and young people

Provinces of Canterbury and York (including Europe and Cathedrals)

Diocese		Average weekly		Average Sunday		Usual Sunday	
		Adults	Children and Young People	Adults	Children and Young People	Adults	Children and Young People
1 Bath & Wells	C	22,700	5,100	20,900	2,800	18,400	2,500
2 Birmingham	C	15,500	3,700	13,800	2,400	12,600	2,100
3 Blackburn	Y	24,600	7,700	22,100	5,700	18,400	4,000
4 Bradford	Y	9,600	2,600	8,700	1,500	7,500	1,200
5 Bristol	C	12,600	3,400	11,400	2,000	10,400	1,900
6 Canterbury	C	18,100	4,500	15,700	3,200	13,700	2,600
7 Carlisle	Y	14,000	2,800	12,300	1,600	10,100	1,100
8 Chelmsford	C	33,800	8,400	30,200	6,000	27,400	5,100
9 Chester	Y	31,700	7,500	27,700	4,800	23,500	4,100
10 Chichester	C	38,500	8,900	33,400	5,700	30,600	5,600
11 Coventry	C	13,400	2,800	12,100	2,100	11,300	1,900
12 Derby	C	15,300	2,900	13,800	2,300	12,000	2,000
13 Durham	Y	17,900	3,300	15,200	2,300	13,300	2,000
14 Ely	C	16,200	3,900	14,900	2,300	12,800	2,000
15 Exeter	C	22,200	2,800	20,300	2,400	19,400	2,300
16 Gloucester	C	17,700	4,000	15,500	2,500	13,600	1,900
17 Guildford	C	22,700	6,600	20,400	4,800	18,600	4,100
18 Hereford	C	11,000	1,700	10,000	1,100	7,200	800
19 Leicester	C	13,500	2,400	12,500	1,800	10,900	1,700
20 Lichfield	C	29,800	8,300	26,100	4,300	23,900	3,700
21 Lincoln	C	20,800	4,700	18,400	2,600	15,700	1,700
22 Liverpool	Y	22,800	6,200	20,000	4,500	16,900	3,500
23 London	C	61,400	17,500	49,600	11,100	47,200	10,900
24 Manchester	Y	26,900	8,700	23,600	6,100	19,600	5,100
25 Newcastle	Y	12,100	2,200	10,500	1,400	8,800	1,000
26 Norwich	C	18,800	2,700	17,500	1,700	14,700	1,300
27 Oxford	C	46,800	11,500	42,200	8,300	37,200	7,500
28 Peterborough	C	15,900	4,100	13,700	2,500	12,100	2,300
29 Portsmouth	C	11,900	2,200	10,700	1,700	10,000	1,500
30 Ripon & Leeds	Y	13,400	3,700	11,800	2,400	10,400	1,900
31 Rochester	C	23,300	7,000	21,000	4,900	19,000	4,400
32 St. Albans	C	30,100	9,100	25,600	5,300	21,900	4,400
33 St. Edms & Ipswich	C	17,100	3,300	15,500	2,100	13,400	1,800
34 Salisbury	C	26,800	5,300	23,500	3,300	20,600	2,800
35 Sheffield	Y	15,100	3,900	13,000	2,400	11,100	2,000
36 Sodor & Man	Y	2,100	400	1,900	300	1,500	200
37 Southwark	C	35,000	11,900	32,400	9,400	28,300	7,800
38 Southwell & Nottingham	Y	15,000	4,400	13,400	2,200	11,700	1,800
39 Truro	C	11,900	1,800	10,600	1,000	9,200	1,000
40 Wakefield	Y	14,300	3,000	12,400	2,100	11,000	1,600
41 Winchester	C	27,200	7,700	24,100	4,500	22,400	4,300
42 Worcester	C	12,900	3,000	11,400	1,600	10,500	1,400
43 York	Y	26,200	6,000	22,300	3,200	19,200	2,500
44 Europe	C	10,900	1,700	10,300	1,600	9,900	1,600
Totals Province of Canterbury	C	673,600	162,800	597,300	107,300	534,900	94,800
Totals Province of York	Y	245,700	62,400	214,800	40,500	182,900	32,000
Totals CHURCH OF ENGLAND		919,300	225,300	812,000	147,800	717,800	126,800



Comparable figures for 2007 (revised since *Church Statistics 2007/8*):

Totals Province of Canterbury	C	689,500	157,800	610,500	107,200	544,900	97,700
Totals Province of York	Y	250,900	61,400	219,400	40,900	191,200	34,500
Totals CHURCH OF ENGLAND		940,400	219,200	829,900	148,100	736,100	132,200

- 1 Children and young people are for the majority of dioceses defined as under the age of 16 years.
- 2 Average weekly attendace = the average number of attenders at church services throughout the week typically over a four week period in October.
- 3 Average Sunday attendance = the average number of attenders at Sunday church services typically over a four week period in October.
- 4 Attendance figures have only been included where local churches held at least one church based service (which included adult presence) during the week under examination.

Easter and Christmas 2008

Provinces of Canterbury and York (including Europe and Cathedrals)

Diocese		Easter Day		Christmas Day	
		attendance	communicants	attendance	communicants
1 Bath & Wells	C	39,900	29,200	76,900	33,400
2 Birmingham	C	23,200	15,800	39,100	16,000
3 Blackburn	Y	36,200	28,700	49,300	25,900
4 Bradford	Y	13,800	10,000	26,100	10,200
5 Bristol	C	19,400	12,700	39,500	14,700
6 Canterbury	C	30,200	20,700	57,200	21,000
7 Carlisle	Y	22,800	16,300	39,400	17,300
8 Chelmsford	C	52,800	36,800	111,100	38,700
9 Chester	Y	45,900	31,200	80,500	33,400
10 Chichester	C	67,000	46,600	132,600	49,200
11 Coventry	C	20,200	15,100	42,000	16,700
12 Derby	C	22,500	16,000	40,600	15,400
13 Durham	Y	23,700	18,300	39,100	16,100
14 Ely	C	21,300	14,800	51,900	18,600
15 Exeter	C	45,900	35,000	79,200	36,400
16 Gloucester	C	30,600	22,700	61,800	25,500
17 Guildford	C	39,300	26,100	85,600	28,100
18 Hereford	C	17,000	13,300	29,100	15,100
19 Leicester	C	18,600	14,100	37,000	14,200
20 Lichfield	C	44,400	34,200	81,800	37,000
21 Lincoln	C	25,200	17,800	53,800	22,100
22 Liverpool	Y	30,500	22,900	40,700	22,200
23 London	C	86,600	57,400	116,100	52,800
24 Manchester	Y	33,600	25,600	43,600	23,500
25 Newcastle	Y	18,700	14,200	43,700	13,100
26 Norwich	C	27,500	20,800	56,300	22,700
27 Oxford	C	77,000	53,800	159,000	61,100
28 Peterborough	C	23,100	17,000	47,000	19,100
29 Portsmouth	C	22,400	16,500	44,200	17,400
30 Ripon & Leeds	Y	19,400	15,100	36,000	16,500
31 Rochester	C	38,200	25,600	77,900	26,300
32 St. Albans	C	42,600	29,500	108,200	36,400
33 St. Edms & Ipswich	C	25,800	19,000	51,200	20,600
34 Salisbury	C	45,500	33,000	78,000	38,000
35 Sheffield	Y	19,300	13,900	33,700	14,000
36 Sodor & Man	Y	4,800	2,400	5,300	2,500
37 Southwark	C	57,200	39,200	101,700	43,000
38 Southwell & Nottingham	Y	20,300	14,700	40,200	15,700
39 Truro	C	21,700	16,200	38,200	16,300
40 Wakefield	Y	19,500	14,700	40,400	15,200
41 Winchester	C	48,000	32,800	94,700	38,200
42 Worcester	C	19,800	14,800	42,200	17,500
43 York	Y	35,600	26,400	74,700	29,900
44 Europe	C	19,100	15,200	20,800	12,400
Totals Province of Canterbury	C	1,071,800	761,500	2,054,600	824,100
Totals Province of York	Y	344,000	254,400	592,600	255,600
Totals CHURCH OF ENGLAND		1,415,800	1,015,900	2,647,200	1,079,700

Research
& Statistics



Comparable figures for 2007*:

Totals Province of Canterbury	C	1,100,000	790,000	2,052,600	843,800
Totals Province of York	Y	369,000	275,100	604,200	266,400
Totals CHURCH OF ENGLAND		1,469,000	1,065,200	2,656,800	1,110,200

Notes:

1 Includes vigil services on Easter Eve.

Parochial baptisms and thanksgivings 2008

Provinces of Canterbury and York (including Europe and Cathedrals)

Diocese		Live births	Baptisms				Thanksgivings		Baptisms and Thanksgivings Total
			Infants under one year	Infant baptisms per 1,000 live births	Children aged 1 to 12 years	All other persons	Infants	Child	
1 Bath & Wells	C	9,639	1,840	191	870	210	70	30	3,020
2 Birmingham	C	22,538	1,520	67	860	230	80	30	2,700
3 Blackburn	Y	16,310	2,850	175	1,240	260	60	30	4,440
4 Bradford	Y	10,416	920	89	340	90	40	10	1,410
5 Bristol	C	13,051	1,330	102	570	220	60	10	2,190
6 Canterbury	C	10,421	1,680	161	980	230	50	20	2,960
7 Carlisle	Y	5,081	1,720	338	370	100	30	0	2,210
8 Chelmsford	C	41,645	2,860	69	1,860	540	220	140	5,620
9 Chester	Y	18,834	3,540	188	1,460	310	130	70	5,520
10 Chichester	C	17,329	2,400	139	1,400	310	100	60	4,280
11 Coventry	C	10,436	1,030	98	590	120	110	30	1,880
12 Derby	C	12,060	1,680	140	740	190	150	40	2,800
13 Durham	Y	17,125	3,650	213	1,270	210	140	50	5,320
14 Ely	C	8,775	1,430	163	600	160	70	30	2,300
15 Exeter	C	11,794	1,920	163	1,020	220	50	20	3,230
16 Gloucester	C	7,053	1,560	221	700	200	20	10	2,500
17 Guildford	C	12,470	1,690	135	1,040	200	60	40	3,030
18 Hereford	C	2,982	860	287	340	60	80	30	1,370
19 Leicester	C	12,091	980	81	540	160	30	20	1,730
20 Lichfield	C	25,680	3,900	152	1,840	410	240	140	6,550
21 Lincoln	C	11,501	2,960	258	1,250	240	70	10	4,530
22 Liverpool	Y	18,599	3,220	173	1,480	240	130	80	5,140
23 London	C	61,193	2,500	41	1,970	660	100	40	5,270
24 Manchester	Y	29,258	3,270	112	1,530	410	270	120	5,590
25 Newcastle	Y	8,811	1,560	177	510	90	10	0	2,180
26 Norwich	C	9,334	1,490	159	650	190	40	10	2,370
27 Oxford	C	30,542	3,690	121	2,070	430	140	60	6,390
28 Peterborough	C	11,681	1,370	118	820	220	50	20	2,480
29 Portsmouth	C	8,423	1,090	129	620	140	20	10	1,870
30 Ripon & Leeds	Y	10,355	1,290	124	600	130	40	10	2,060
31 Rochester	C	16,044	1,770	111	1,230	280	260	160	3,710
32 St. Albans	C	24,320	2,430	100	1,460	350	100	60	4,410
33 St. Edms & Ipswich	C	7,302	1,150	158	640	160	50	20	2,010
34 Salisbury	C	9,711	2,130	219	900	230	120	40	3,420
35 Sheffield	Y	15,213	2,180	144	840	310	280	70	3,690
36 Sodor & Man	Y	979	210	219	70	20	0	0	310
37 Southwark	C	42,232	2,360	56	1,730	440	100	60	4,690
38 Southwell & Nottingham	Y	13,062	1,460	112	590	230	100	30	2,400
39 Truro	C	5,448	1,080	198	410	100	30	10	1,640
40 Wakefield	Y	14,817	2,000	135	800	240	210	20	3,270
41 Winchester	C	15,018	2,460	164	1,120	230	100	30	3,960
42 Worcester	C	9,825	1,570	160	770	190	90	40	2,660
43 York	Y	16,176	3,500	217	1,400	340	220	40	5,500
44 Europe	C		350		200	80	30	10	670
Totals Province of Canterbury	C	480,540	55,080	115	29,790	7,400	2,730	1,220	96,220
Totals Province of York	Y	195,040	31,370	161	12,520	2,980	1,650	530	49,040
Totals CHURCH OF ENGLAND		675,570	86,450	128	42,310	10,380	4,380	1,750	145,260

Research
& Statistics



Comparable figures for 2007:

Totals Province of Canterbury	C	468,270	55,980	120	28,190	7,290	2,860	1,110	95,440
Totals Province of York	Y	189,780	32,440	171	12,150	2,890	1,890	570	49,940
Totals CHURCH OF ENGLAND		658,050	88,420	134	40,340	10,180	4,750	1,690	145,380

Notes:

- 1 Live births per diocese are estimates based on statistics obtained from the Office for National Statistics (ONS).

Children at Church-related activities 2008

Provinces of Canterbury and York (including Europe and excluding Cathedrals)

Diocese		Children attending non-worship activities:		Adults working with children aged 5-10 years		Children per adult
		5-7 years	8-10 years	voluntary	employed	
1 Bath & Wells	C	2,400	2,900	1,200	60	4.2
2 Birmingham	C	1,800	2,300	1,200	50	3.3
3 Blackburn	Y	2,200	3,300	1,600	40	3.4
4 Bradford	Y	600	700	500	20	2.5
5 Bristol	C	1,700	2,000	900	50	3.9
6 Canterbury	C	1,300	1,700	900	130	2.9
7 Carlisle	Y	1,600	1,700	600	20	5.3
8 Chelmsford	C	3,400	4,700	2,400	70	3.3
9 Chester	Y	3,100	3,500	1,400	60	4.5
10 Chichester	C	2,700	3,500	1,700	90	3.5
11 Coventry	C	900	900	600	20	2.9
12 Derby	C	900	1,100	800	40	2.4
13 Durham	Y	1,700	2,100	800	40	4.5
14 Ely	C	1,500	1,400	700	30	4.0
15 Exeter	C	1,200	1,700	1,200	70	2.3
16 Gloucester	C	1,800	2,100	800	60	4.5
17 Guildford	C	2,600	2,700	1,600	70	3.2
18 Hereford	C	700	800	400	10	3.7
19 Leicester	C	900	1,000	600	30	3.0
20 Lichfield	C	3,500	4,000	2,100	80	3.4
21 Lincoln	C	2,000	2,400	700	50	5.9
22 Liverpool	Y	3,900	4,700	1,900	60	4.4
23 London	C	4,300	5,900	3,300	120	3.0
24 Manchester	Y	4,000	5,500	2,400	60	3.9
25 Newcastle	Y	800	1,100	600	20	3.1
26 Norwich	C	1,000	1,200	800	20	2.7
27 Oxford	C	2,600	2,700	2,200	70	2.3
28 Peterborough	C	1,600	1,700	900	50	3.5
29 Portsmouth	C	2,500	1,900	700	20	6.1
30 Ripon & Leeds	Y	1,400	1,600	1,000	20	2.9
31 Rochester	C	3,900	4,300	2,000	70	4.0
32 St. Albans	C	2,800	2,900	1,900	100	2.9
33 St. Edms & Ipswich	C	800	1,200	700	30	2.7
34 Salisbury	C	2,200	2,000	1,200	50	3.4
35 Sheffield	Y	800	1,300	700	40	2.8
36 Sodor & Man	Y	200	200	100	0	4.0
37 Southwark (estimates)	C	4,100	4,900	2,500	100	3.5
38 Southwell & Nottingham	Y	1,200	1,400	900	30	2.8
39 Truro	C	800	1,000	500	10	3.5
40 Wakefield	Y	1,900	2,500	1,000	60	4.2
41 Winchester	C	2,900	3,200	1,800	90	3.2
42 Worcester	C	2,100	2,000	700	20	5.7
43 York	Y	1,800	2,200	1,400	90	2.7
44 Europe	C	200	300	700	10	0.7
Totals Province of Canterbury	C	61,100	70,400	37,700	1,670	3.3
Totals Province of York	Y	25,200	31,800	14,900	560	3.7
Totals CHURCH OF ENGLAND		86,300	102,200	52,600	2,230	3.4



Comparable figures for 2003:

Totals CHURCH OF ENGLAND	113,000	136,000	3.7
--------------------------	---------	---------	-----

1 A special question, previously asked during October 2003, again asked for numbers of children attending activities other than worship connected with the church, generally over the month of October 2008. It also asked the number of adults working through the church/parish with children aged 5 to 10 years at that time, in both a voluntary and employed capacity.

Young people at Church-related activities 2007

Provinces of Canterbury and York (including Europe and excluding Cathedrals)

Diocese		Young people attending non-worship activities:		Adults working with young people aged 11 and over		Young people per adult
		11-15 years	16-25 years	voluntary	employed	
1 Bath & Wells	C	2,700	800	900	60	3.7
2 Birmingham	C	2,800	1,000	820	80	4.2
3 Blackburn	Y	2,700	700	960	50	3.4
4 Bradford	Y	700	200	410	20	2.2
5 Bristol	C	1,300	400	580	40	2.9
6 Canterbury	C	1,800	500	720	60	3.0
7 Carlisle	Y	1,000	300	370	20	3.3
8 Chelmsford	C	4,500	1,400	1,600	110	3.4
9 Chester	Y	2,700	900	1,230	70	2.8
10 Chichester	C	3,600	900	1,240	90	3.4
11 Coventry	C	1,600	500	470	30	4.1
12 Derby	C	1,200	400	470	30	3.0
13 Durham	Y	1,700	600	580	30	3.8
14 Ely	C	700	200	520	40	1.7
15 Exeter	C	1,300	400	810	60	1.9
16 Gloucester	C	1,500	700	510	30	4.1
17 Guildford	C	4,800	1,100	960	80	5.7
18 Hereford	C	500	300	350	10	2.1
19 Leicester	C	900	300	350	40	3.2
20 Lichfield	C	4,600	1,500	1,390	130	4.0
21 Lincoln	C	1,500	300	520	40	3.3
22 Liverpool	Y	5,000	1,000	1,630	100	3.5
23 London	C	6,800	3,500	2,340	240	4.0
24 Manchester	Y	4,400	1,000	1,870	70	2.8
25 Newcastle	Y	1,000	200	410	20	2.9
26 Norwich	C	1,000	400	560	90	2.1
27 Oxford	C	3,500	2,300	1,430	120	3.8
28 Peterborough	C	1,800	500	610	100	3.3
29 Portsmouth	C	1,100	300	490	30	2.7
30 Ripon & Leeds	Y	1,400	200	580	40	2.6
31 Rochester	C	3,000	900	1,260	60	3.0
32 St. Albans	C	3,500	1,000	1,380	120	3.0
33 St. Edms & Ipswich	C	1,500	400	710	40	2.6
34 Salisbury	C	2,600	800	950	150	3.1
35 Sheffield	Y	1,600	600	570	50	3.6
36 Sodor & Man	Y	200	0	50	0	5.6
37 Southwark (estimates)	C	4,700	2,100	1,410	100	4.5
38 Southwell & Nottingham	Y	1,800	500	570	40	3.8
39 Truro	C	900	100	340	10	2.8
40 Wakefield	Y	1,500	300	500	40	3.3
41 Winchester	C	3,700	1,700	1,100	90	4.5
42 Worcester	C	900	500	1,160	20	1.2
43 York	Y	2,000	600	670	0	3.9
44 Europe	C	400	300	330	20	2.1
Totals Province of Canterbury	C	70,600	25,600	26,260	2,110	3.4
Totals Province of York	Y	27,800	7,300	10,400	550	3.2
Totals CHURCH OF ENGLAND		98,400	32,800	36,660	2,660	3.3

Research
& Statistics



Comparable figures for 2002:

Totals CHURCH OF ENGLAND	126,000	38,000	4.3
--------------------------	---------	--------	-----

1 A special question, previously asked during October 2002, again asked for numbers of young people attending activities other than worship connected with the church, generally over the month of October 2007. It also asked the number of adults working through the church/parish with young people aged 11 and over at that time, in both a voluntary and employed capacity.

Confirmations 2008

Provinces of Canterbury and York (including Europe, excluding Armed forces)

Ref. no.	Diocese		Males	Females	Total	Number of services
1	Bath & Wells	C	166	268	434	43
2	Birmingham	C	185	297	482	92
3	Blackburn	Y	653	816	1,469	86
4	Bradford	Y	67	98	165	22
5	Bristol	C	130	250	380	24
6	Canterbury	C	200	322	522	34
7	Carlisle	Y	157	243	400	53
8	Chelmsford	C	412	716	1,128	82
9	Chester	Y	313	544	857	106
10	Chichester	C	479	598	1,077	61
11	Coventry	C	114	167	281	11
12	Derby	C	154	257	411	33
13	Durham	Y	208	386	594	34
14	Ely	C	143	224	367	37
15	Exeter	C	242	374	616	59
16	Gloucester	C	112	228	340	41
17	Guildford	C	251	364	615	42
18	Hereford	C	99	172	271	33
19	Leicester	C	106	120	226	20
20	Lichfield	C	453	734	1,187	117
21	Lincoln	C	170	223	393	42
22	Liverpool	Y	363	587	950	75
23	London	C	660	1,020	1,680	191
24	Manchester	Y	452	709	1,161	73
25	Newcastle	Y	115	198	313	64
26	Norwich	C	116	233	349	48
27	Oxford	C	654	852	1,506	126
28	Peterborough	C	253	360	613	50
29	Portsmouth	C	61	107	168	14
30	Ripon & Leeds	Y	194	285	479	50
31	Rochester*	C	426	562	988	63
32	St. Albans	C	379	557	936	73
33	St. Edms & Ipswich	C	156	250	406	38
34	Salisbury	C	215	434	649	34
35	Sheffield	Y	108	182	290	29
36	Sodor & Man	Y	11	22	33	2
37	Southwark	C	483	737	1,220	95
38	Southwell & Nottingham	Y	182	304	486	27
39	Truro	C	69	105	174	36
40	Wakefield	Y	151	224	375	76
41	Winchester	C	241	349	590	70
42	Worcester	C	119	216	335	37
43	York	Y	280	505	785	108
44	Europe	C	129	142	271	44
Totals Province of Canterbury		C	7,377	11,238	18,615	1,690
Totals Province of York		Y	3,254	5,103	8,357	805
Totals CHURCH OF ENGLAND			10,631	16,341	26,972	2,495



Comparable figures for 2007:

Totals Province of Canterbury	C	7,722	11,633	19,355	1,823
Totals Province of York	Y	3,409	5,152	8,561	815
Totals CHURCH OF ENGLAND		11,131	16,785	27,916	2,638

Notes:

- 1 Number of services in Rochester are for 2007

Parochial church electoral rolls 2008 and selected years

Provinces of Canterbury and York (including Europe and including Cathedrals from 2002 onwards)

Diocese		2008	2007	2002	1996	1990
1 Bath & Wells	C	35,400	36,000	38,000	42,700	47,300
2 Birmingham	C	17,200	17,500	18,200	19,300	19,900
3 Blackburn	Y	33,400	34,700	34,300	37,400	47,000
4 Bradford	Y	11,300	11,300	12,300	12,700	14,900
5 Bristol	C	15,000	15,400	16,600	19,000	22,200
6 Canterbury	C	20,500	20,600	21,000	21,000	21,000
7 Carlisle	Y	20,000	20,400	21,600	24,900	25,700
8 Chelmsford	C	46,100	45,300	48,600	50,800	51,100
9 Chester	Y	43,700	42,600	45,700	48,600	50,500
10 Chichester	C	53,000	54,100	51,800	58,200	62,700
11 Coventry	C	16,600	17,300	16,300	17,700	19,800
12 Derby	C	18,100	17,800	20,700	20,100	24,100
13 Durham	Y	21,900	22,800	24,000	27,400	30,900
14 Ely	C	18,600	18,300	19,100	20,900	23,800
15 Exeter	C	30,900	30,800	30,500	33,900	38,000
16 Gloucester	C	23,000	22,100	23,600	26,300	28,400
17 Guildford	C	28,800	28,100	29,500	30,600	33,100
18 Hereford	C	17,400	17,600	18,100	18,900	20,000
19 Leicester	C	16,000	16,400	17,000	16,100	19,300
20 Lichfield	C	43,300	44,600	45,000	52,200	58,400
21 Lincoln	C	26,500	28,400	27,800	31,300	35,900
22 Liverpool	Y	27,500	26,800	28,800	32,500	36,900
23 London	C	68,700	64,400	59,600	52,500	45,100
24 Manchester	Y	32,300	32,600	34,500	38,000	39,300
25 Newcastle	Y	16,100	16,000	16,700	17,500	19,500
26 Norwich	C	20,000	19,800	23,900	25,900	31,100
27 Oxford	C	53,600	52,700	54,600	60,600	58,700
28 Peterborough	C	18,800	18,300	18,000	19,500	21,700
29 Portsmouth	C	16,800	16,400	17,500	18,000	19,500
30 Ripon & Leeds	Y	16,800	15,300	17,600	19,300	24,600
31 Rochester	C	29,500	28,500	29,900	31,300	34,100
32 St. Albans	C	38,000	36,900	39,400	43,100	50,000
33 St. Edms & Ipswich	C	23,000	23,300	24,100	25,300	26,900
34 Salisbury	C	40,500	40,700	42,500	45,900	48,200
35 Sheffield	Y	17,400	17,400	18,600	20,700	22,600
36 Sodor & Man	Y	2,600	2,700	2,400	2,800	3,300
37 Southwark	C	45,800	44,800	44,200	45,400	46,100
38 Southwell & Nottingham	Y	18,600	18,800	18,300	18,700	20,800
39 Truro	C	15,600	15,700	16,900	17,600	21,900
40 Wakefield	Y	19,500	19,800	20,300	23,200	24,900
41 Winchester	C	38,300	37,000	38,500	42,100	44,400
42 Worcester	C	18,600	19,200	20,300	22,400	21,200
43 York	Y	33,700	33,600	35,000	38,200	41,100
44 Europe	C	10,700	10,300	9,300	NA	NA
Totals Province of Canterbury	C	864,300	858,300	880,500	928,600	993,900
Totals Province of York	Y	314,800	314,800	330,100	361,900	402,000
Totals CHURCH OF ENGLAND		1,179,100	1,173,100	1,210,600	1,290,500	1,395,900

1 Electoral Rolls are revised annually and new rolls are compiled every six years. Thus in 1990, 1996, 2002 and 2007 new electoral rolls were compiled.

2 National electoral roll totals for 1990 and 1996 do not include the Diocese of Europe.

Research
& Statistics



Parochial Easter and Christmas comparisons 1922 to 2008

Including Cathedrals and their daughter churches

Research
& Statistics

Year	Adult population (000s)	Easter Day			Christmas Day/Eve		
		attendance (000s)	communicants (000s)	communicant rates per 1,000 adult pop	attendance (000s)	communicants (000s)	communicant rates per 1,000 adult pop
1922	25,951	-	2,294	88	-	-	-
1930	28,418	-	2,285	80	-	-	-
1940	31,418	-	2,018	64	-	-	-
1950	32,319	-	1,867	58	-	-	-
1960	33,395	-	2,159	65	-	2,074	62
1970	35,450	-	1,632	46	-	1,689	48
1980	36,924	-	1,551	42	-	1,807	49
1990	39,002	-	1,376	35	-	1,556	40
1991	38,993	-	1,310	34	-	1,590	41
1992	39,289	-	1,350	34	-	1,483	38
1993	39,414	-	1,317	33	-	1,481	38
1994	39,557	-	1,300	33	-	1,488	38
1995	39,657	-	1,265	32	-	1,393	35
1996	39,836	-	1,236	31	-	1,344	34
1997	40,013	-	1,172	29	-	1,344	34
1998	40,554	-	1,193	29	-	1,308	32
1999	39,852	-	1,180	30	-	1,225	31
2000	40,145	1,626	1,163	29	2,852	1,366	34
2001	39,475	1,593	1,135	29	2,608	1,228	31
2002	39,927	1,473	1,059	27	2,607	1,215	30
2003	40,246	1,504	1,078	27	2,653	1,200	30
2004	40,537	1,513	1,095	27	2,629	1,164	29
2005	40,913	1,418	1,019	25	2,786	1,208	30
2006	41,290	1,485	1,072	26	2,994	1,258	30
2007	41,436	1,469	1,065	26	2,657	1,110	27
2008	41,975	1,416	1,016	24	2,647	1,080	26

Notes:

- 1 Population figures in these tables are derived from information provided by the Office for National Statistics. Other statistics have been obtained from parochial returns and diocesan sources.
- 2 Aged 15 or over up until 1998, aged 16 or over from 1999 onwards.
- 3 Easter Day includes vigil services on Easter Eve.



Parochial confirmations, Electoral Rolls, usual Sunday attendances and funerals comparisons 1900 to 2008

Excluding Europe (except where indicated "E")

Year	Confirmations			Church Electoral Rolls (000s)	Usual Sunday attendances (all services)			Funerals (000s)	Deaths (000s)	Funerals as a per cent of deaths
	Males (000s)	Females (000s)	Total (000s)		Children and young people (000s)	Adults (000s)	Total (000s)			
1900	73	108	181	-	-	-	-	-	-	-
1910	95	132	227	-	-	-	-	-	-	-
1920	83	116	199	-	-	-	-	-	-	-
1930	84	112	196	3,693	-	-	-	-	-	-
1940	65	79	144	3,423	-	-	-	-	-	-
1950	60	82	142	2,959	-	-	-	-	-	-
1960	78	113	191	2,862	-	-	-	-	-	-
1970	45	68	113	2,559	-	-	1,542	-	-	-
1978	-	-	-	1,761 R	-	-	1,243	-	-	-
1980	37	61	98	1,815	-	-	1,240	-	-	-
1984	-	-	-	1,495 R	-	-	1,182	-	-	-
1986	-	-	-	1,583	252	914	1,166	-	-	-
1990	23	37	60	1,396 R	226	917	1,143	-	-	-
1991	21	34	55	1,437	223	914	1,137	-	-	-
1992	22	36	58	1,459	220	903	1,123	-	-	-
1993	20	32	52	1,474	206	883	1,089	-	-	-
1994	18	30	48	1,479	201	880	1,081	-	-	-
1995	17	27	44	1,468	192	854	1,046	-	-	-
1996	17	26	43	1,290 R	184	832	1,016	-	-	-
1997 E	16	25	41	1,325	179	817	996	-	-	-
1998 E	16	24	40	1,347	174	803	977	-	-	-
1999 E	14	23	37	1,357	170	799	969	-	-	-
2000 E	14	22	36	1,377	-	-	-	233	501	46
2001 E	13	20	33	1,372	157	781	938	228	496	46
2002 E	13	20	33	1,210 R	151	768	919	225	499	45
2003 E	13	19	32	1,235	145	757	902	227	503	45
2004 E	12	18	30	1,254	143	760	903	213	482	44
2005 E	12	18	30	1,269	137	743	880	207	482	43
2006 E	12	18	30	1,266	133	737	870	199	473	42
2007 E	11	17	28	1,173 R	132	736	868	194	473	41
2008 E	11	16	27	1,179	127	718	845	188	478	39

Research
& Statistics

1 Since 1972 new electoral rolls have been prepared usually every 6 years. Such years are marked with an "R"

2 Before 1957 the minimum age for inclusion on the electoral roll was 18. From 1957-1980 the age was lowered to 17 after which it was reduced again to 16. Electoral roll figures for 1982 and previous years include some cathedral rolls. These have been excluded from the figures for later years.

3 The number of deaths are estimates based on Population Trends, Office for National Statistics



Parochial baptisms and thanksgivings comparisons 1900 to 2008

Year	Live births (000s)	Baptisms					Thanksgivings		
		Infants under one year (000s)	Infant baptisms per 1,000 live births	Children aged 1 to 12 years (000s)	All other persons (000s)	Total Baptisms (000s)	Infants (000s)	Child (000s)	Thanksgivings Total (000s)
1900	868	564	650	-	-	575	-	-	-
1910	831	573	690	-	-	589	-	-	-
1920	891	604	678	-	-	615	-	-	-
1930	607	424	699	-	-	434	-	-	-
1940	570	365	640	-	-	375	-	-	-
1950	657	441	671	-	-	450	-	-	-
1960	744	412	554	-	-	422	-	-	-
1970	745	347	466	-	-	355	-	-	-
1980	621	226	364	-	-	266	-	-	-
1990	670	184	275	35	9	228	-	-	-
1991	661	180	272	36	9	225	-	-	-
1992	655	170	260	37	9	216	-	-	-
1993	639	160	250	37	8	205	-	-	-
1994	632	157	248	38	8	203	-	-	-
1995	616	148	240	38	8	194	-	-	-
1996	617	141	229	39	8	188	-	-	-
1997	610	139	228	40	8	187	-	-	-
1998	610	129	211	39	8	176	-	-	-
1999	592	126	213	43	10	179	-	-	-
2000	576	114	198	38	8	160	6	1	7
2001	566	107	189	38	8	153	5	2	7
2002	569	103	181	40	8	151	5	2	7
2003	592	99	167	37	8	144	5	2	7
2004	610	97	159	38	9	144	6	2	8
2005	616	93	151	39	9	141	5	2	7
2006	638	91	143	38	9	138	5	1	6
2007	658	88	134	40	10	138	5	2	7
2008	676	87	129	42	10	139	4	2	6

1 The infant baptism figures for 1980 and later years are not directly comparable with those of previous years, because from 1978 the returns have specified infant baptisms as those under one year of age in order to relate more realistically to live births.



Parochial marriages and funerals 2008

Provinces of Canterbury and York (including Europe and Cathedrals)

Diocese		Marriages			Funerals			Number of deaths	Per cent with C-of-E funeral
		Marriages	Blessings and civil marriages	Total	Held in church	Held in crematoria/ cemeteries	Total		
1 Bath & Wells	C	1,430	130	1,560	2,430	1,710	4,140	9,453	44%
2 Birmingham	C	1,080	50	1,130	1,320	3,020	4,330	12,563	35%
3 Blackburn	Y	1,080	80	1,160	2,380	2,510	4,880	13,970	35%
4 Bradford	Y	610	40	650	840	770	1,610	6,301	26%
5 Bristol	C	820	40	860	1,110	1,420	2,540	7,583	33%
6 Canterbury	C	1,110	90	1,200	1,260	2,210	3,460	9,014	38%
7 Carlisle	Y	740	50	780	1,810	970	2,780	5,452	51%
8 Chelmsford	C	2,700	210	2,910	3,020	4,900	7,920	24,558	32%
9 Chester	Y	1,630	70	1,700	3,890	3,080	6,980	16,023	44%
10 Chichester	C	1,800	170	1,970	2,560	3,540	6,110	17,380	35%
11 Coventry	C	890	60	960	1,690	920	2,600	7,463	35%
12 Derby	C	1,180	100	1,270	2,560	1,900	4,450	10,212	44%
13 Durham	Y	1,130	60	1,190	3,780	2,580	6,360	15,697	41%
14 Ely	C	1,050	90	1,140	1,840	1,220	3,060	5,793	53%
15 Exeter	C	1,450	140	1,590	2,910	2,060	4,970	12,370	40%
16 Gloucester	C	1,070	100	1,160	2,150	1,420	3,570	6,090	59%
17 Guildford	C	1,230	90	1,320	1,360	2,020	3,380	8,112	42%
18 Hereford	C	610	40	660	1,430	690	2,120	3,402	62%
19 Leicester	C	900	50	960	1,590	1,410	2,990	8,256	36%
20 Lichfield	C	2,230	140	2,370	5,640	4,660	10,310	20,278	51%
21 Lincoln	C	1,600	130	1,730	3,030	2,510	5,540	11,028	50%
22 Liverpool	Y	1,060	60	1,120	3,570	1,930	5,500	16,023	34%
23 London	C	1,610	170	1,780	1,470	2,960	4,430	22,664	20%
24 Manchester	Y	1,250	70	1,320	2,550	3,200	5,760	19,146	30%
25 Newcastle	Y	640	60	700	1,350	1,750	3,100	8,371	37%
26 Norwich	C	1,210	90	1,300	2,490	2,500	4,990	9,430	53%
27 Oxford	C	2,680	210	2,890	3,580	3,690	7,270	16,404	44%
28 Peterborough	C	1,040	100	1,140	1,580	870	2,440	7,156	34%
29 Portsmouth	C	920	70	990	1,210	1,700	2,910	7,378	39%
30 Ripon & Leeds	Y	810	50	860	1,370	1,220	2,590	7,402	35%
31 Rochester	C	1,050	100	1,150	1,590	3,960	5,550	10,672	52%
32 St. Albans	C	1,670	110	1,780	2,710	3,210	5,920	14,437	41%
33 St. Edms & Ipswich	C	920	100	1,020	2,000	1,120	3,120	6,244	50%
34 Salisbury	C	1,440	130	1,560	2,470	1,960	4,430	9,687	46%
35 Sheffield	Y	1,080	60	1,150	2,410	2,700	5,110	12,028	43%
36 Sodor & Man	Y	110	20	140	330	170	500	843	59%
37 Southwark	C	1,740	140	1,880	1,350	3,180	4,530	17,481	26%
38 Southwell & Nottingham	Y	1,210	70	1,280	2,380	1,690	4,070	10,301	40%
39 Truro	C	930	70	990	1,610	880	2,500	5,938	42%
40 Wakefield	Y	930	70	1,000	2,230	2,050	4,280	10,873	39%
41 Winchester	C	1,740	140	1,880	2,240	2,020	4,260	12,046	35%
42 Worcester	C	1,000	60	1,070	1,930	1,930	3,860	8,407	46%
43 York	Y	1,620	100	1,730	3,120	2,750	5,870	14,036	42%
44 Europe	C	160	360	520	280	680	960	-	-
Totals Province of Canterbury	C	39,260	3,480	42,740	62,400	66,260	128,660	321,499	40%
Totals Province of York	Y	13,890	880	14,760	32,020	27,380	59,400	156,466	38%
Totals CHURCH OF ENGLAND		53,150	4,350	57,500	94,430	93,630	188,060	477,965	39%

Comparable figures for 2007 (revised since *Church Statistics 2007/8*):

Research
& Statistics



Total Province of Canterbury	C	39,870	3,480	43,350	61,680	68,600	130,280	317,430	41%
Totals Province of York	Y	14,750	1,010	15,750	33,920	30,120	64,040	155,497	41%
Totals CHURCH OF ENGLAND		54,620	4,480	59,110	95,600	98,710	194,320	472,927	41%

Notes:

- 1. The number of deaths are estimates based on statistics obtained from the Office National Statistics (ONS)

Total marriages in England 1982 to 2007

Excluding Isle of Man, Channel Islands and Church of England parishes in Wales

Year	Church of England (C of E)	All Christian	All religious ceremonies	All marriages	Percentage of all marriages that are Christian	Percentage of all religious ceremonies that are C of E	Percentage of all marriages that are C of E
1982	110,511	164,885	166,305	323,137	51	66	34
1985	110,121	166,846	166,330	327,241	51	66	34
1990	109,369	161,756	163,634	312,712	52	67	35
1995	79,616	119,901	119,901	268,344	45	66	30
1996	71,392	105,769	107,827	264,191	40	66	27
1997	66,792	98,274	100,631	257,963	38	66	26
1998	65,834	95,594	97,943	253,113	38	67	26
1999	63,371	92,137	94,637	249,490	37	67	25
2000	61,519	88,488	91,031	253,836	35	68	24
2001	57,085	80,954	83,315	236,203	34	69	24
2002	55,197	78,266	80,764	242,112	32	68	23
2003	56,232	78,568	81,111	255,577	31	69	22
2004	57,910	79,606	82,310	258,185	31	70	22
2005	57,130	77,420	79,964	233,827	33	71	24
2006	54,038	73,049	75,658	225,971	32	71	24
2007	53,567	71,424	74,210	222,483	32	72	24

First marriages in England and Wales 1982 to 2008

Year	All marriages	All first marriages	Percentage of all marriages that are first marriages	Church of England / Church in Wales first marriages	Percentage of all first marriages that are C of E or Church in Wales	All religious first marriages	Percentage of all first marriages that are religious first marriages
1982	342,166	220,427	64	112,522	51	152,639	69
1985	346,389	221,927	64	110,749	50	151,803	68
1990	331,150	209,043	63	106,597	51	143,824	69
1995	283,012	166,418	59	74,509	45	101,293	61
1996	278,975	160,680	58	66,553	41	91,463	57
1997	272,536	156,907	58	62,109	40	85,678	55
1998	267,303	156,539	59	61,194	39	83,863	54
1999	263,515	155,027	59	58,530	38	80,783	52
2000	267,961	156,140	58	56,137	36	76,983	49
2001	249,227	148,642	60	52,313	35	71,594	48
2002	255,596	151,014	59	49,649	33	68,450	45
2003	270,109	160,283	59	49,522	31	68,197	43
2004	273,069	163,007	60	49,578	30	68,197	42
2005	247,805	148,405	60	50,211	34	67,463	45
2006	239,454	145,995	61	47,537	33	64,707	44
2007	235,367	146,220	62	47,010	32	63,870	44
2008	232,990	146,130	63			62,380	43

Notes

- 1 First marriage = marriages between single people
- 2 The 2007 figures replace the provisional figures in Church Statistics 2007/8. 2008 figures are provisional.
- 3 Marriage Divorce and Adoption Statistics, 2007, Crown Copyright 2010, and earlier editions, and Population Trends Summer 2010, The Stationery Office. Crown Copyright material is reproduced under Class Licence Number C01W0000297 with the permission of the Controller of HMSO and the Queen's Printer for Scotland.



Ordination of women resolutions and petitions

Provinces of Canterbury and York (including Europe)

Diocese		Total number of parishes at the end of 2009	Parishes where Resolution A applies	Parishes where Resolution B applies	Parishes where a petition for extended episcopal ministry applies	Bishops providing extended episcopal ministry
1 Bath & Wells	C	470	12	11	6 Provincial	+ Ebbsfleet
2 Birmingham	C	149	10	12	6 Provincial	+ Ebbsfleet
3 Blackburn	Y	225	37	64	11 Diocesan	+ Burnley
4 Bradford	Y	128	2	2	2 Regional	+ Beverley
5 Bristol	C	161	7	7	4 Provincial	+ Ebbsfleet
6 Canterbury	C	262	20	23	6 Provincial	+ Richborough
7 Carlisle	Y	263	15	21	2 Regional	+ Burnley
8 Chelmsford	C	466	48	53	26 Provincial	+ Richborough
9 Chester	Y	276	10	12	8 Regional	+ Beverley
10 Chichester	C	374	38	44	N/A Diocesan	
11 Coventry	C	198	10	13	7 Diocesan	+ Ebbsfleet
12 Derby	C	253	21	21	8 Provincial	+ Ebbsfleet
13 Durham	Y	230	29	33	21 Provincial	+ Beverley
14 Ely	C	307	9	12	4 Provincial	+ Richborough
15 Exeter	C	492	40	47	26 Diocesan	+ Plymouth
16 Gloucester	C	306	4	7	1 Provincial	+ Ebbsfleet
17 Guildford	C	164	4	4	3 Provincial	+ Richborough
18 Hereford	C	343	0	0	0 N/A	N/A
19 Leicester	C	236	11	11	3 Provincial	+ Richborough
20 Lichfield	C	423	46	50	23 Provincial	+ Ebbsfleet
21 Lincoln	C	507	26	29	4 Provincial	+ Richborough
22 Liverpool	Y	207	4	5	3 Provincial	+ Beverley
23 London	C	395	72	73	34 Diocesan	+ London + Fulham + Edmonton
24 Manchester	Y	269	32	33	9 Provincial	+ Beverley
25 Newcastle	Y	174	23	27	2 Provincial	+ Beverley
26 Norwich	C	563	15	20	2 Provincial	+ Richborough
27 Oxford	C	622	19	29	13 Provincial	+ Ebbsfleet
28 Peterborough	C	348	13	19	4 Provincial	+ Richborough
29 Portsmouth	C	142	14	17	9 Diocesan	+ Richborough
30 Ripon & Leeds	Y	166	8	8	5 Provincial	+ Beverley
31 Rochester*	C	215	14	17	10 Regional	+ Fulham
32 St. Albans	C	336	10	14	8 Provincial	+ Richborough
33 St. Edms & Ipswich	C	446	14	14	8 Provincial	+ Richborough
34 Salisbury	C	453	6	15	3 Provincial	+ Ebbsfleet
35 Sheffield	Y	173	32	36	22 Provincial	+ Beverley
36 Sodor & Man	Y	28	1	1	1 Provincial	+ Beverley
37 Southwark	C	291	21	30	17 Regional	+ Fulham
38 Southwell & Nottingham	Y	260	8	11	5 Provincial	+ Beverley
39 Truro	C	221	14	15	4 Diocesan	+ Ebbsfleet
40 Wakefield	Y	184	34	34	12 Diocesan	+ Pontefract
					Provincial	+ Beverley
41 Winchester	C	259	12	16	4 Provincial	+ Richborough
42 Worcester	C	175	6	6	4 Provincial	+ Ebbsfleet
43 York	Y	454	28	32	13 Diocesan	+ Whitby
44 Europe**	C	280	3	18	N/A N/A	N/A
Total Province of Canterbury	C	9,857	539	647	247	

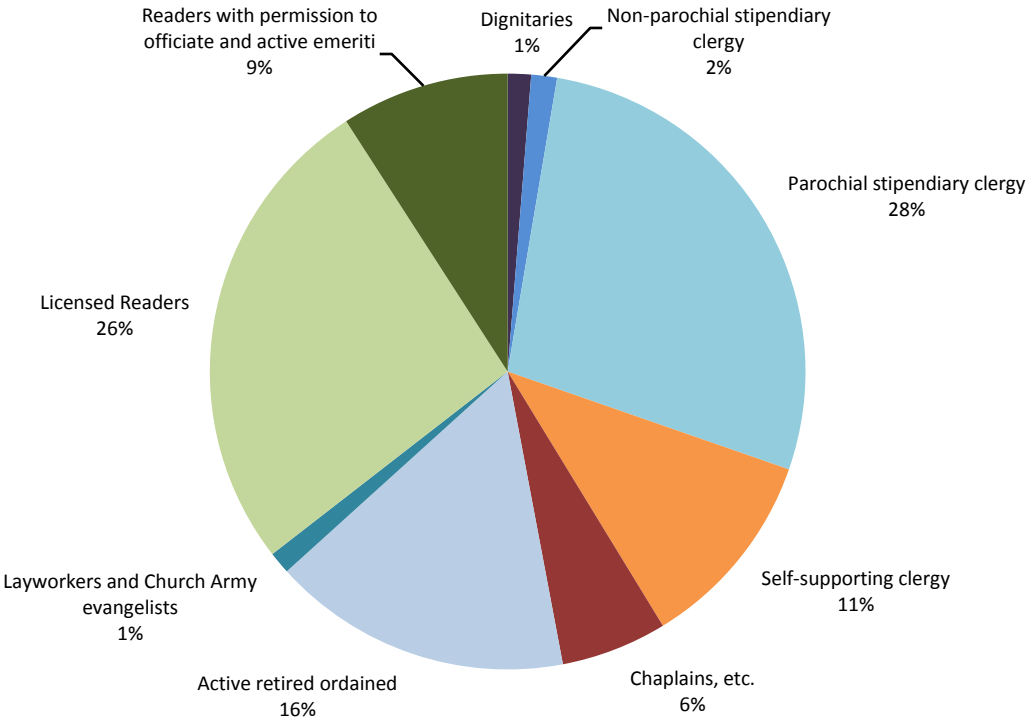
Research
& Statistics



Totals Province of York	Y	3,037	263	319	116	
Totals CHURCH OF ENGLAND		12,894	802	966	363	
Percentage of parishes			6%	7%	3%	
Ten year percentage change			-4%	-1%	23%	

- Notes:
- 1. *Rochester: resolution/petition data as of 1 January 2008
 - 2. **Europe: number of churches and congregations

Church of England licensed ministries 2009



Licenses stipendiary clergy	8,591
Licenses self-supporting clergy	3,100
Chaplains and other ministries	1,631
Licenses layworkers and lay Church Army evangelists	341
Active retired ordained	4,610
Licensed Readers	7,472
Readers with permissions to officiate and active emeriti	2,584
Totals CHURCH OF ENGLAND	28,329

The figures for stipendiary clergy (full-time, part-time and including those outside the clergy share system) and for lay workers above are based on statistics derived from the central Church payroll. Details of chaplains and other ministers working outside the parish framework, and of non-stipendiary clergy, are based on statistics derived from the database used to compile Crockford's Clerical Directory. Where possible, they have been cross-referenced with material produced by organizing bodies (Church Army, the Home Office for prison chaplains, and the Hospital Chaplaincies Council for hospital chaplains).

The figure shown for active retired ordained clergy is an estimate of the number of licensed retired clergy who take an active part in ministry. It is based on the number of retired clergy known to have either permission to officiate, licence to officiate or actual appointments. Pension Board records indicated a total of 8,954 retired stipendiary clergy in 2009.



Summary diocesan licensed ministers 2009

Provinces of Canterbury and York (including Europe)

Research
& Statistics

Diocese		Full-time stipendiary clergy			Part time stipendiary clergy			Self supporting clergy, except ordained local ministers			Ordained local ministers among self-supporting clergy			Total clergy (stipendiary and self supporting)	Readers and Church Army	Total clergy, readers and Church Army
		men	women	Total	men	women	Total	men	women	Total	men	women	Total			
1 Bath & Wells	C	158	42	200	8	8	16	23	27	50	0	0	0	266	284	550
2 Birmingham	C	115	44	159	3	3	6	20	21	41	0	0	0	206	166	372
3 Blackburn	Y	156	17	173	4	2	6	21	22	43	0	0	0	222	171	393
4 Bradford	Y	84	13	97	3	6	9	20	18	38	0	0	0	144	104	248
5 Bristol	C	100	24	124	1	5	6	18	22	40	5	4	9	179	167	346
6 Canterbury	C	116	24	140	2	3	5	23	27	50	12	14	26	221	108	329
7 Carlisle	Y	109	28	137	0	2	2	21	21	42	2	2	4	185	115	300
8 Chelmsford	C	300	76	376	7	6	13	43	50	93	1	0	1	483	384	867
9 Chester	Y	202	48	250	12	6	18	18	32	50	0	0	0	318	375	693
10 Chichester	C	274	19	293	9	3	12	49	28	77	0	0	0	382	154	536
11 Coventry	C	91	19	110	6	3	9	11	21	32	3	8	11	162	160	322
12 Derby	C	119	28	147	0	0	0	24	30	54	0	0	0	201	246	447
13 Durham	Y	147	42	189	6	2	8	17	24	41	1	4	5	243	149	392
14 Ely	C	101	39	140	6	5	11	23	26	49	0	0	0	200	144	344
15 Exeter	C	174	35	209	15	6	21	23	21	44	0	0	0	274	180	454
16 Gloucester	C	102	36	138	3	2	5	44	43	87	3	6	9	239	145	384
17 Guildford	C	138	32	170	4	12	16	32	36	68	28	26	54	308	127	435
18 Hereford	C	68	24	92	0	3	3	14	30	44	3	6	9	148	87	235
19 Leicester	C	104	36	140	4	3	7	18	21	39	0	0	0	186	145	331
20 Lichfield	C	244	59	303	12	11	23	24	33	57	33	31	64	447	313	760
21 Lincoln	C	138	36	174	3	1	4	9	21	30	14	17	31	239	151	390
22 Liverpool	Y	158	51	209	0	2	2	12	13	25	12	18	30	266	273	539
23 London	C	453	72	525	6	9	15	106	45	151	0	0	0	691	211	902
24 Manchester	Y	179	56	235	4	4	8	26	17	43	41	45	86	372	155	527
25 Newcastle	Y	101	34	135	3	3	6	13	18	31	9	8	17	189	103	292
26 Norwich	C	156	34	190	2	8	10	17	16	33	23	23	46	279	184	463
27 Oxford	C	293	92	385	6	2	8	109	91	200	19	30	49	642	230	872
28 Peterborough	C	108	27	135	2	1	3	19	21	40	0	0	0	178	131	309
29 Portsmouth	C	87	19	106	0	3	3	22	37	59	0	0	0	168	91	259
30 Ripon & Leeds	Y	89	38	127	2	0	2	22	15	37	0	0	0	166	103	269
31 Rochester	C	179	27	206	3	9	12	22	29	51	0	0	0	269	256	525
32 St. Albans	C	179	73	252	3	6	9	43	45	88	0	1	1	350	214	564
33 St. Edms & Ipswich	C	107	31	138	4	5	9	19	17	36	15	25	40	223	130	353
34 Salisbury	C	162	50	212	1	0	1	26	43	69	23	27	50	332	105	437
35 Sheffield	Y	115	37	152	1	4	5	17	6	23	0	0	0	180	196	376
36 Sodor & Man	Y	12	1	13	0	0	0	6	2	8	2	0	2	23	28	51
37 Southwark	C	267	80	347	2	5	7	96	104	200	0	0	0	554	191	745
38 Southwell & Nottingham	Y	108	43	151	3	6	9	15	14	29	0	0	0	189	287	476
39 Truro	C	90	17	107	3	0	3	22	24	46	5	4	9	165	80	245
40 Wakefield	Y	103	39	142	0	3	3	19	22	41	8	16	24	210	136	346
41 Winchester	C	179	21	200	5	3	8	41	44	85	0	0	0	293	284	577
42 Worcester	C	108	29	137	1	0	1	10	22	32	0	0	0	170	124	294
43 York	Y	178	44	222	5	1	6	42	37	79	0	1	1	308	222	530
44 Europe	C	128	13	141	0	0	0	33	14	47	0	0	0	188	73	261
Totals Province of Canterbury	C	4,838	1,158	5,996	121	125	246	983	1,009	1,992	187	222	409	8,643	5,265	13,908
Totals Province of York	Y	1,741	491	2,232	43	41	84	269	261	530	75	94	169	3,015	2,417	5,432
Totals CHURCH OF ENGLAND		6,579	1,649	8,228	164	166	330	1,252	1,270	2,522	262	316	578	11,658	7,682	19,340



Notes:

- 1 The above figures include only those ministers who were working within the diocesan framework as at 31 December 2009.
- 2 The Archbishop of Canterbury and ordained members of his staff at Lambeth Palace are classed as extra-diocesan and are not included in these figures.
- 3 Reader and Church Army figures do not include Readers with PTO or emeriti, or ordained Church Army evangelists.
- 4 Figures for stipendiary clergy and for lay workers are based on statistics derived from the central Church payroll.
- 5 Details of self-supporting clergy are based on statistics derived from the database used to compile Crockford's Clerical Directory. Where possible they have been cross-referenced with material produced by organising bodies.
- 6 Stipendiary clergy and lay workers are paid by central Church payroll. Self-supporting clergy (and Ordained Local Ministers) hold diocesan licenses with a role in parishes.

Full time stipendiary diocesan clergy 2009

Provinces of Canterbury and York (including Europe)

Diocese		Dignitaries (including benefices)										Parochial clergy								Non-parochial diocesan clergy	Total stipendiary diocesan clergy 2009		Total stipendiary diocesan clergy 2008		
		Diocesan bishops	Suffragan bishops	Arch-deacons	Cathedrals				Total dignitaries	Incumbents (excluding dignitaries)	Incumbent status		Assisstant curates	Total parochial clergy		m	f	m	f						
					Deans	Other clergy																			
m	m	m	f	m	f	m	f	m	f	m	f	m	f	m	f	m	f	m	f	m	f				
1 Bath & Wells	C	1	1	2	1	1	0	2	0	7	1	87	17	35	13	25	10	147	40	4	1	158	42	168	40
2 Birmingham	C	1	1	2	0	0	0	2	1	6	1	74	13	18	7	12	20	104	40	5	3	115	44	123	45
3 Blackburn	Y	1	2	2	0	1	0	2	0	8	0	85	5	43	4	15	7	143	16	5	1	156	17	159	17
4 Bradford	Y	1	0	2	0	1	0	1	1	5	1	42	3	23	5	8	3	73	11	6	1	84	13	85	14
5 Bristol	C	1	1	2	0	0	0	2	1	6	1	44	5	26	8	13	7	83	20	11	3	100	24	103	29
6 Canterbury	C	0	1	1	1	1	0	3	1	6	2	45	5	45	10	15	7	105	22	5	0	116	24	113	24
7 Carlisle	Y	1	0	3	0	1	0	2	0	7	0	52	9	30	12	15	6	97	27	5	1	109	28	120	25
8 Chelmsford	C	0	3	3	1	1	0	3	0	10	1	185	21	54	30	39	23	278	74	12	1	300	76	315	72
9 Chester	Y	1	2	2	0	1	0	2	0	8	0	126	27	28	8	32	13	186	48	8	0	202	48	197	46
10 Chichester	C	1	2	3	0	1	0	2	0	9	0	171	4	43	6	43	9	257	19	8	0	274	19	273	19
11 Coventry	C	1	1	1	0	1	0	2	0	6	0	52	5	20	6	10	6	82	17	3	2	91	19	98	18
12 Derby	C	1	1	1	0	1	0	2	1	6	1	59	9	33	10	17	8	109	27	4	0	119	28	130	25
13 Durham	Y	1	1	3	0	1	0	2	1	8	1	82	9	32	13	17	16	131	38	8	3	147	42	151	38
14 Ely	C	1	1	2	0	1	0	3	0	8	0	54	15	18	14	15	8	87	37	6	2	101	39	105	37
15 Exeter	C	1	2	2	1	1	0	2	0	8	1	70	6	65	14	27	14	162	34	4	0	174	35	189	34
16 Gloucester	C	1	1	2	0	1	0	1	1	6	1	44	12	35	10	11	13	90	35	6	0	102	36	108	31
17 Guildford	C	1	1	2	0	1	0	1	1	6	1	93	15	14	5	22	11	129	31	3	0	138	32	145	30
18 Hereford	C	1	1	1	0	1	0	2	0	6	0	40	8	11	11	8	4	59	23	3	1	68	24	69	28
19 Leicester	C	1	1	2	0	0	1	4	0	8	1	51	14	25	10	11	11	87	35	9	0	104	36	105	37
20 Lichfield	C	1	3	4	0	1	0	2	0	11	0	150	14	48	22	26	20	224	56	9	3	244	59	243	55
21 Lincoln	C	1	2	1	1	1	0	3	0	8	1	70	7	33	17	19	9	122	33	8	2	138	36	138	35
22 Liverpool	Y	1	1	2	0	1	0	2	0	7	0	95	18	36	15	18	18	149	51	2	0	158	51	162	49
23 London	C	1	5	4	1	1	0	5	1	16	2	272	23	43	7	104	32	419	62	18	8	453	72	447	68
24 Manchester	Y	1	2	3	1	1	0	2	1	9	2	83	13	66	26	18	11	167	50	3	4	179	56	185	56
25 Newcastle	Y	1	1	2	0	1	0	2	0	7	0	60	13	19	10	9	8	88	31	6	3	101	34	106	31
26 Norwich	C	1	2	2	1	1	0	3	0	9	1	109	18	18	4	14	10	141	32	6	1	156	34	158	35
27 Oxford	C	1	3	2	1	0	0	0	1	6	2	160	28	68	36	53	17	281	81	6	9	293	92	286	89
28 Peterborough	C	0	1	1	1	1	0	2	0	5	1	57	11	27	10	15	3	99	24	4	2	108	27	112	29
29 Portsmouth	C	0	0	2	1	1	0	1	0	4	1	61	9	9	3	9	6	79	18	4	0	87	19	94	18
30 Ripon & Leeds	Y	1	1	1	1	1	0	2	0	6	1	43	10	27	12	9	14	79	36	4	1	89	38	94	36
31 Rochester	C	0	1	2	0	1	0	2	0	6	0	128	13	19	4	23	9	170	26	3	1	179	27	185	29
32 St. Albans	C	1	2	3	0	1	0	2	0	9	0	98	16	46	38	19	18	163	72	7	1	179	73	187	65
33 St. Edms & Ipswich	C	1	1	0	1	0	0	2	0	4	1	65	11	23	11	10	7	98	29	5	1	107	31	114	27
34 Salisbury	C	1	2	3	0	0	1	3	0	9	1	83	9	43	20	21	17	147	46	6	3	162	50	168	44
35 Sheffield	Y	1	1	1	0	1	0	2	1	6	1	82	21	12	5	11	10	105	36	4	0	115	37	120	37
36 Sodor & Man	Y	1	0	1	0	0	0	0	0	2	0	9	1	0	0	0	0	9	1	1	0	12	1	12	1
37 Southwark	C	1	3	5	1	1	0	2	2	12	3	157	31	49	18	40	25	246	74	9	3	267	80	268	76
38 Southwell & Nottingham	Y	1	1	2	0	1	0	2	1	7	1	34	8	48	18	12	13	94	39	7	3	108	43	107	43
39 Truro	C	1	1	2	0	1	0	2	0	7	0	34	3	40	9	9	5	83	17	0	0	90	17	91	18
40 Wakefield	Y	1	1	2	0	1	0	2	1	7	1	64	12	21	14	7	12	92	38	4	0	103	39	113	39
41 Winchester	C	1	1	1	0	1	0	3	0	7	0	106	9	31	5	29	6	166	20	6	1	179	21	190	21
42 Worcester	C	1	1	2	0	1	0	2	0	7	0	56	12	27	7	9	9	92	28	9	1	108	29	113	30
43 York	Y	1	2	3	0	1	0	2	0	9	0	107	18	25	15	27	9	159	42	10	2	178	44	183	43
44 Europe	C	1	1	7	0	1	0	2	0	12	0	0	0	100	7	15	5	115	12	1	1	128	13	118	13
Totals Province of Canterbury	C	25	47	67	12	24	2	67	10	230	24	2,675	363	1,066	372	683	349	4,424	1,084	184	50	4,838	1,158	4,956	1,121
Totals Province of York	Y	14	15	29	2	13	0	25	6	96	8	964	167	410	157	198	140	1,572	464	73	19	1,741	491	1,794	475
Totals CHURCH OF ENGLAND		39	62	96	14	37	2	92	16	326	32	3,639	530	1,476	529	881	489	5,996	1,548	257	69	6,579	1,649	6,750	1,596

Notes:

- 1 The above figures include only those ministers who were working within the diocesan framework as at 31 December 2009
- 2 The Archbishop of Canterbury and ordained members of his staff at Lambeth Palace are classed as extra-diocesan and are not included in these figures.
- 3 Reader and Church Army figures do not include Readers with PTO or emeriti, or ordained Church Army evangelists.
- 4 Figures for stipendiary clergy and for lay workers are based on statistics derived from the central Church payroll.
- 5 Details of self-supporting clergy are based on statistics derived from the database used to compile Crockford's Clerical Directory. Where possible they have been cross-referenced with material produced by organising bodies.
- 6 Stipendiary clergy and lay workers are paid by central Church payroll. Self-supporting clergy (and Ordained Local Ministers) hold diocesan licenses with a role in parishes.
- 7 Dignitaries holding more than one dignity are included only in the higher ranking dignity.
- 8 Incumbent status includes Team Vicars, Priests-in-Charge and Curates-in Charge of Conventional Districts.



Chaplaincy and other ministries 2009

Provinces of Canterbury and York (including Europe)

Code	Ministry	Male	Female	Total
AF	Royal Navy chaplains	38	0	38
AF	Army chaplains	78	2	80
AF	Royal Air Force chaplains	40	3	43
PC	Prison chaplains	86	44	130
HC	Hospital/healthcare chaplains	177	100	277
SC	School chaplains ³	151	27	178
HE/FE	Higher and Further Education chaplains ³	78	19	97
OC	Other chaplains ⁴	239	51	290
NS	Other self-supporting clergy ⁵	184	87	271
TC	Ordained staff of theological and bible colleges and other Christian centres for education and research	81	29	110
RC	Ordained members of religious communities ⁶	61	26	87
CA	Ordained Church Army evangelists	24	6	30
Total 2009		1,237	394	1,631
Total 2008		1,403	443	1,846

Notes:

- 1 The table does not include chaplains and other clergy counted elsewhere in the statistics; for example chaplains who have a diocesan appointment and are on the Church Commissioners' payroll.
- 2 Where an individual holds more than one appointment it has been a subjective decision as to where to place an individual. This means that there is inevitably some disparity between the above figures and those for previous years.
- 3 Apart from chaplains, ordained members of the teaching staffs of schools and colleges are not counted here, but are included within the self-supporting clergy figures.
- 4 'Other chaplains' includes full and part-time ordained staff of retreat houses, conference and healing centres, shrines, almshouses, missionary societies and communities.
- 5 'Other self-supporting clergy' includes: full and part-time ordained staff with either diocesan or non-diocesan appointments; some cathedral clergy; certain chaplains; and those who are not parish deployable but with licence to officiate or permission to officiate.
- 6 Of these, 81 are professed in vows and 2 are novices. There are an additional 390 lay members of religious communities who are professed in vows (32 men and 358 women).
- 7 In addition there are 131 accredited lay workers on the Church Commissioners' payroll (including some church army evangelists), 9 deaconesses, and a further 13 full-time clergy on the staff of Church House and Lambeth Palace.
- 8 The figures for chaplains and other ministers working outside the parish framework are based on statistics derived from the database used to compile Crockford's Clerical Directory (with the exception of religious communities and Church Army where data is collected from source). Where possible, they have been cross-referenced with material produced by organizing bodies (Ministry of Defence for the forces chaplains; Home Office for prison chaplains; Hospital Chaplaincies Council for hospital chaplains).
- 9 The above figures capture those in chaplaincy and other ministries as at 31 December 2009, except Hospital and healthcare chaplains, which is accurate as of April 2010.



Licensed Readers and Church Army 2009

Provinces of Canterbury and York (including Europe)

Diocese		Reader admissions during year		Licensed Readers at 31 Dec 2009				Readers in training at 31 Dec 2009		Church Army (lay evangelists) at 31 Dec 2009	
		m	f	m	f			m	f	m	f
1 Bath & Wells	C	7	10	143	(56)	136	(18)	3	2	4	1
2 Birmingham	C	4	8	78	(20)	87	(23)	7	11	1	0
3 Blackburn	Y	3	7	72	(42)	97	(19)	6	3	2	0
4 Bradford	Y	0	3	39	(25)	59	(15)	6	14	5	1
5 Bristol	C	4	11	69	(27)	98	(30)	12	17	0	0
6 Canterbury	C	2	3	38	(29)	64	(20)	7	6	6	0
7 Carlisle	Y	1	5	57	(29)	56	(20)	4	6	2	0
8 Chelmsford	C	1	10	181	(48)	196	(35)	2	18	3	4
9 Chester	Y	6	10	189	(93)	181	(29)	21	23	3	2
10 Chichester	C	5	2	85	(80)	63	(38)	11	10	6	0
11 Coventry	C	7	3	79	(28)	75	(14)	3	7	4	2
12 Derby	C	4	3	123	(40)	121	(30)	1	7	2	0
13 Durham	Y	1	7	61	(34)	85	(16)	7	15	1	2
14 Ely	C	1	4	74	(27)	67	(12)	6	16	3	0
15 Exeter	C	4	3	89	(54)	86	(46)	14	23	4	1
16 Gloucester	C	4	3	82	(29)	61	(20)	6	15	1	1
17 Guildford	C	3	4	70	(38)	49	(21)	11	5	5	3
18 Hereford	C	0	5	45	(10)	38	(7)	3	5	2	2
19 Leicester	C	0	8	66	(20)	76	(11)	1	2	2	1
20 Lichfield	C	2	11	156	(60)	145	(48)	11	28	8	4
21 Lincoln	C	4	2	52	(28)	95	(17)	8	22	4	0
22 Liverpool	Y	2	9	123	(33)	142	(26)	22	25	5	3
23 London	C	4	3	111	(26)	92	(26)	6	19	5	3
24 Manchester	Y	3	6	78	(51)	71	(23)	5	10	4	2
25 Newcastle	Y	2	5	45	(19)	53	(20)	5	6	2	3
26 Norwich	C	1	6	84	(53)	96	(43)	2	14	3	1
27 Oxford	C	3	8	120	(40)	103	(26)	8	14	4	3
28 Peterborough	C	2	7	69	(22)	58	(10)	11	16	2	2
29 Portsmouth	C	0	5	44	(19)	47	(17)	6	6	0	0
30 Ripon & Leeds	Y	3	4	51	(19)	45	(28)	3	13	4	3
31 Rochester	C	8	7	131	(70)	120	(36)	14	8	3	2
32 St. Albans	C	3	3	111	(41)	98	(34)	19	31	5	0
33 St. Edms & Ipswich	C	3	1	72	(34)	54	(37)	5	6	3	1
34 Salisbury	C	1	3	67	(63)	37	(30)	5	7	1	0
35 Sheffield	Y	0	5	92	(17)	81	(17)	13	11	14	9
36 Sodor & Man	Y	2	1	17	(7)	11	(3)	1	2	0	0
37 Southwark	C	4	10	96	(48)	89	(27)	16	24	3	3
38 Southwell & Nottingham	Y	6	3	132	(21)	150	(19)	8	13	4	1
39 Truro	C	0	2	40	(29)	37	(13)	5	9	1	2
40 Wakefield	Y	1	5	59	(25)	73	(16)	9	7	4	0
41 Winchester	C	5	4	154	(47)	123	(14)	20	19	5	2
42 Worcester	C	3	2	52	(26)	71	(13)	5	7	1	0
43 York	Y	6	7	109	(47)	108	(24)	14	15	2	3
44 Europe	C	4	1	44	(14)	29	(5)	17	20	0	0
Totals Province of Canterbury	C	93	152	2,625	(1,126)	2,511	(721)	245	394	91	38
Totals Province of York	Y	36	77	1,124	(462)	1,212	(275)	124	163	52	29
Totals CHURCH OF ENGLAND		129	229	3,749	(1,588)	3,723	(996)	369	557	143	67

Research
& Statistics



Comparable figures for 2008:

Totals Province of Canterbury	C	113	145	2,741	(1,127)	2,543	(697)	245	405	85	35
Totals Province of York	Y	50	67	1,155	(472)	1,214	(241)	126	177	55	29
Totals CHURCH OF ENGLAND		163	212	3,896	(1,599)	3,757	(938)	371	582	140	64

Notes:

- 1 Readers figures in brackets refer to the additional number of Readers with Permission to Officiate and active Emeriti. These figures have been revised since the publication of 'The Annual Report of the Central Readers Council of the Church of England 2009'.
- 2 There are a further six Church Army evangelists who are nationally deployed. Ordained Church Army evangelists are counted in the 'Chaplaincy and other ministries' table.

Age profile of full time clergy 2009

Provinces of Canterbury and York (excluding Europe)

Age	Dignitaries (including benefices)											Parochial clergy							Non-parochial diocesan clergy		Total stipendiary diocesan clergy		
	Diocesan bishops	Suffragan bishops	Arch-deacons	Cathedrals				Total dignitaries		Incumbents and incumbent status (excluding	Assistant curates	Total parochial clergy			m	f	m+f	m	f	m	f	m+f	
				Deans	Other clergy		m					f	m	f									m+f
m	m	m	f	m	f	m	f	m	f	f	m	f	m+f	m	f	m	f	m	f	m	f	m+f	
Under 25	0	0	0	0	0	0	0	0	0	0	0	0	0	0	0	0	0	0	0	0	0	0	0
25-29	0	0	0	0	0	0	0	0	0	0	0	5	0	57	20	62	20	82	0	1	62	21	83
30-34	0	0	0	0	0	0	0	2	1	2	1	71	24	169	49	240	73	313	11	3	253	77	330
35-39	0	0	0	0	0	0	0	2	2	2	2	226	38	206	50	432	88	520	17	4	451	94	545
40-44	0	1	1	0	0	0	0	6	1	8	1	515	80	146	68	661	148	809	28	9	697	158	855
45-49	0	6	1	3	3	0	23	1	33	4	800	166	113	110	913	276	1,189	38	11	984	291	1,275	
50-54	6	13	25	6	5	1	18	6	67	13	1,029	237	95	116	1,124	353	1,477	64	18	1,255	384	1,639	
55-59	5	19	27	4	14	1	23	2	88	7	1,012	281	43	55	1,055	336	1,391	44	16	1,187	359	1,546	
Total under 60	11	39	54	13	22	2	74	13	200	28	3,658	826	829	468	4,487	1,294	5,781	202	62	4,889	1,384	6,273	
60-64	20	18	25	1	10	0	13	3	86	4	1,073	200	32	14	1,105	214	1,319	44	6	1,235	224	1,459	
65-69	7	4	10	0	4	0	3	0	28	0	253	26	5	2	258	28	286	10	0	296	28	324	
70 and over	0	0	0	0	0	0	0	0	0	0	31	0	0	0	31	0	31	0	0	31	0	31	
Total 60 and over	27	22	35	1	14	0	16	3	114	4	1,357	226	37	16	1,394	242	1,636	54	6	1,562	252	1,814	
Age unknown	0	0	0	0	0	0	0	0	0	0	0	0	0	0	0	0	0	0	0	0	0	0	
All	38	61	89	14	36	2	90	16	314	32	5,015	1,052	866	484	5,881	1,536	7,417	256	68	6,451	1,636	8,087	
Average age, years	60	56	57	52	57	55	52	50			53	52	41	45				51	49				

Age profile of other diocesan clergy 2009

Provinces of Canterbury and York (excluding Europe)

	Part time (stipendiary)		Self supporting		Total		
	m	m	m	f	m	f	m+f
Under 25	0	0	0	0	0	0	0
25-29	0	0	1	2	1	2	3
30-34	1	1	20	12	21	13	34
35-39	4	19	36	27	40	46	86
40-44	19	25	57	37	76	62	138
45-49	14	21	105	101	119	122	241
50-54	20	25	186	182	206	207	413
55-59	28	25	273	298	301	323	624
Total under 60	86	116	678	659	764	775	1,539
60-64	56	36	361	438	417	474	891
65-69	15	11	245	274	260	285	545
70 and over	7	3	147	94	154	97	251
Total 60 and over	78	50	753	806	831	856	1,687
Age unknown	0	0	50	107	50	107	157
All	164	166	1,481	1,572	1,645	1,738	3,383
Average age, years	56	52	58	59			

1 Incumbents and incumbent status includes Team vicars, Priests in charge and Curates in charge of Conventional Districts. Assistant curates includes Parish Deacons



Stipendiary clergy losses and gains 1995-2009

Year	Deaths in service		Retirements		Other losses		Total losses		Ordinations		Other gains		Total gains		Net loss or gain	
	m	f	m	f	m	f	m	f	m	f	m	f	m	f	m	f
1995	27	1	338	19	236	55	601	75	245	65	130	47	375	112	-226	37
1996	29	2	363	17	241	41	633	60	201	67	137	32	338	99	-295	39
1997	21	1	357	19	207	25	585	45	186	57	129	48	315	105	-270	60
1998	24	0	329	16	187	28	540	44	174	67	144	41	318	108	-222	64
1999	25	2	317	16	201	39	543	57	199	78	150	57	349	135	-194	78
2000	17	2	349	19	182	49	548	70	223	90	151	46	374	136	-174	66
2001	15	3	359	27	210	52	584	82	186	95	147	51	333	146	-251	64
2002	18	1	332	35	180	54	530	90	195	106	123	54	318	160	-212	70
2003	19	2	310	27	184	46	513	75	181	120	123	47	304	167	-209	92
2004	11	1	285	28	199	71	495	100	143	92	110	51	253	143	-242	43
2005	17	2	252	40	179	72	448	114	155	99	141	78	296	177	-152	63
2006	16	2	262	34	165	60	443	96	128	92	97	40	225	132	-218	36
2007	12	1	274	38	179	57	465	96	161	100	76	32	237	132	-228	36
2008	8	0	256	38	173	69	437	107	191	116	105	43	296	159	-141	52
2009	13	0	303	34	158	65	474	99	192	111	101	41	293	152	-181	53

Notes:

- The following tables are based on the numbers of clergy leaving and entering the clergy payroll (excluding the Diocese in Europe), which is held currently by the Church Commissioners. The losses and gains recorded include people that have moved to and from the Diocese in Europe, to and from posts which are funded by external agencies such as National Health Service Trusts, the Prison Service, mission agencies or schools, and between stipendiary and self-supporting ministry or full-time and part-time.



Full time equivalent stipendiary diocesan clergy 2009

Provinces of Canterbury and York (excluding Europe)

Diocese		Actual	Share	Number over or under (-) share	Percent over or under (-) share
1 Bath & Wells	C	208	197	11	6%
2 Birmingham	C	162	172	-10	-6%
3 Blackburn	Y	176	197	-21	-11%
4 Bradford	Y	102	102	0	0%
5 Bristol	C	128	128	0	0%
6 Canterbury	C	142	150	-8	-5%
7 Carlisle	Y	138	130	8	6%
8 Chelmsford	C	382	383	-1	0%
9 Chester	Y	257	240	17	7%
10 Chichester	C	299	271	28	10%
11 Coventry	C	116	124	-8	-7%
12 Derby	C	147	156	-9	-6%
13 Durham	Y	195	195	0	0%
14 Ely	C	146	138	8	6%
15 Exeter	C	214	228	-14	-6%
16 Gloucester	C	141	138	3	2%
17 Guildford	C	178	154	24	16%
18 Hereford	C	94	108	-14	-13%
19 Leicester	C	144	146	-2	-2%
20 Lichfield	C	314	306	8	3%
21 Lincoln	C	176	219	-43	-20%
22 Liverpool	Y	210	201	9	5%
23 London	C	532	490	42	9%
24 Manchester	Y	239	257	-18	-7%
25 Newcastle	Y	138	136	2	2%
26 Norwich	C	196	190	5	3%
27 Oxford	C	389	376	13	3%
28 Peterborough	C	137	151	-14	-10%
29 Portsmouth	C	108	108	-1	0%
30 Ripon & Leeds	Y	128	136	-8	-6%
31 Rochester	C	213	181	32	18%
32 St. Albans	C	257	258	-1	-1%
33 St. Edms & Ipswich	C	143	149	-7	-4%
34 Salisbury	C	213	207	6	3%
35 Sheffield	Y	155	157	-2	-1%
36 Sodor & Man	Y	13	18	-5	-28%
37 Southwark	C	351	322	29	9%
38 Southwell & Nottingham	Y	156	160	-5	-3%
39 Truro	C	109	113	-5	-4%
40 Wakefield	Y	144	152	-9	-6%
41 Winchester	C	205	217	-12	-6%
42 Worcester	C	138	133	5	3%
43 York	Y	225	258	-33	-13%
Total Province of Canterbury	C	5,976	5,913	63	1%
Totals Province of York	Y	2,276	2,339	-63	-3%
Totals CHURCH OF ENGLAND		8,252	8,252	0	0%

1. The 'Actual' is the number of full-time stipendiary clergy plus the whole-time equivalent of the part-time clergy

2. Shares are allocated as whole posts according to the clergy deployment formula

Research
& Statistics



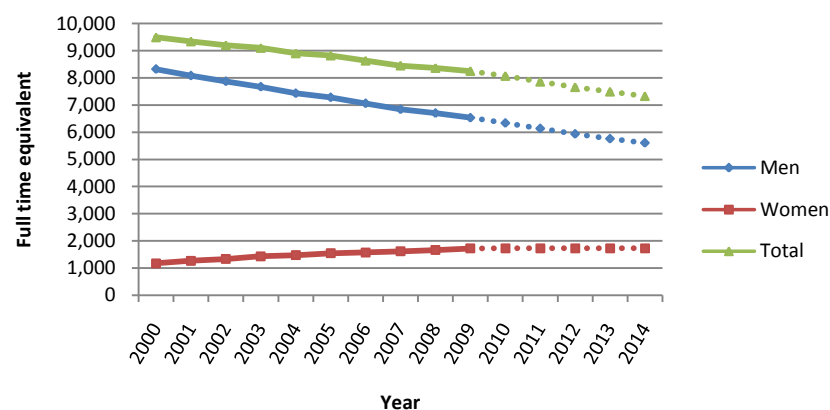
Projections of stipendiary diocesan clergy 2010 - 2014

Full time equivalence of stipendiary clergy: actuals and projections

	Year	Men	Women	Total
Actuals	2000	8,320	1,170	9,490
	2001	8,080	1,260	9,340
	2002	7,870	1,330	9,200
	2003	7,670	1,430	9,100
	2004	7,430	1,470	8,900
	2005	7,280	1,540	8,820
	2006	7,060	1,570	8,630
	2007	6,840	1,610	8,450
	2008	6,700	1,660	8,360
Projections	2009	6,530	1,720	8,250
	2010	6,340	1,730	8,070
	2011	6,130	1,730	7,860
	2012	5,930	1,730	7,660
	2013	5,760	1,730	7,490
	2014	5,600	1,730	7,330

Notes:

- 1 Figures are rounded to the nearest 10 and figures may not add up as a result.



Projections are intended to show the results of letting present trends continue, rather than as explicit predictions of the future. They are calculated by considering past clergy losses and gains, together with the number of ordinations to stipendiary ministry anticipated for 2010 and 2011, and applying them to the actual numbers of stipendiary clergy in post on 31st December 2009. After comparing the actual outturns with earlier projections for the same year, the mechanism is reviewed to reduce sources of inaccuracy.

Estimates of retirement patterns take the age profile of present clergy into account and consider what proportion of clergy of similar age have retired in recent years. Because of a high proportion of clergy born shortly after 1945, retirements are expected to rise until 2012 and remain high thereafter. The annual losses in clergy numbers due to deaths in service and resignations are likely to decrease because they are dependent on the decreasing number of clergy at the start of the year.

Ordination numbers are estimated several years ahead in consultation with the theological institutions and dioceses and there will be factors influencing these figures that cannot be anticipated at this stage. The most recent information available anticipates 317 candidates will complete training in 2010 and 311 in 2011. A small allowance is made for a proportion to defer their entry into stipendiary ministry. From 2012, a moving average of stipendiary ordination figures starting from three past years and two anticipated years has been used.

The greatest uncertainty comes from movements into and out of stipendiary ministry aside from ordination, death and retirement. Some resign and leave completely. For others, there is two-way exchange with self-supporting ministry, chaplaincy, other provinces and the Diocese in Europe. Other clergy are remaining stipendiary but for altered hours. These projections apply a combined moving average of all such movements to future years. As transfers to self-supporting ministry and part-time working become increasingly prevalent, it may be that the projection mechanism will need to be refined to deal specifically with them.

The average age of ordinands to stipendiary ministry has risen since 1999 from 40 to 43 for women and from 35 to 38 for men. These projections assume that the ages will not rise any further, but the situation is continually reviewed.

If present trends continue, there will be fewer clergy in stipendiary ministry in future years. Numbers of women are expected to remain steady for several years but the decline will come especially from the high numbers of men reaching retirement age. In contrast, the number of non-stipendiary clergy continues to increase, gaining both new ordinations and former stipendiary clergy.



Projections of stipendiary diocesan clergy shares 2010 - 2014

Provinces of Canterbury and York (excluding Europe)

Diocese		2010	2011	2012	2013	2014
1 Bath & Wells	C	193	188	184	180	176
2 Birmingham	C	169	164	160	156	152
3 Blackburn	Y	194	189	184	179	175
4 Bradford	Y	100	98	96	94	92
5 Bristol	C	126	123	120	118	116
6 Canterbury	C	148	144	141	138	135
7 Carlisle	Y	128	124	121	118	115
8 Chelmsford	C	373	363	353	345	338
9 Chester	Y	236	229	223	217	212
10 Chichester	C	265	257	251	245	240
11 Coventry	C	121	118	115	112	110
12 Derby	C	153	149	145	142	139
13 Durham	Y	189	184	179	174	170
14 Ely	C	135	132	129	126	124
15 Exeter	C	224	218	213	208	204
16 Gloucester	C	135	131	128	125	122
17 Guildford	C	150	146	143	139	136
18 Hereford	C	106	103	100	98	96
19 Leicester	C	143	139	136	133	130
20 Lichfield	C	299	291	282	276	269
21 Lincoln	C	214	209	204	199	195
22 Liverpool	Y	196	190	184	179	175
23 London	C	482	470	457	449	440
24 Manchester	Y	252	246	239	234	229
25 Newcastle	Y	133	129	125	122	120
26 Norwich	C	186	181	177	173	169
27 Oxford	C	367	357	348	340	333
28 Peterborough	C	149	145	142	139	136
29 Portsmouth	C	105	103	100	98	95
30 Ripon & Leeds	Y	133	130	127	125	122
31 Rochester	C	177	172	168	164	160
32 St. Albans	C	252	246	240	234	230
33 St. Edms & Ipswich	C	146	142	139	136	133
34 Salisbury	C	203	198	193	188	184
35 Sheffield	Y	154	150	146	142	139
36 Sodor & Man	Y	17	17	16	16	16
37 Southwark	C	313	305	297	291	285
38 Southwell & Nottingham	Y	157	153	149	146	143
39 Truro	C	111	108	106	103	101
40 Wakefield	Y	149	145	141	138	135
41 Winchester	C	211	206	200	196	191
42 Worcester	C	130	126	123	120	117
43 York	Y	254	247	240	235	230
Totals Province of Canterbury	C	5,786	5,634	5,494	5,371	5,256
Totals Province of York	Y	2,292	2,231	2,170	2,119	2,073
Totals CHURCH OF ENGLAND		8,078	7,865	7,664	7,490	7,329

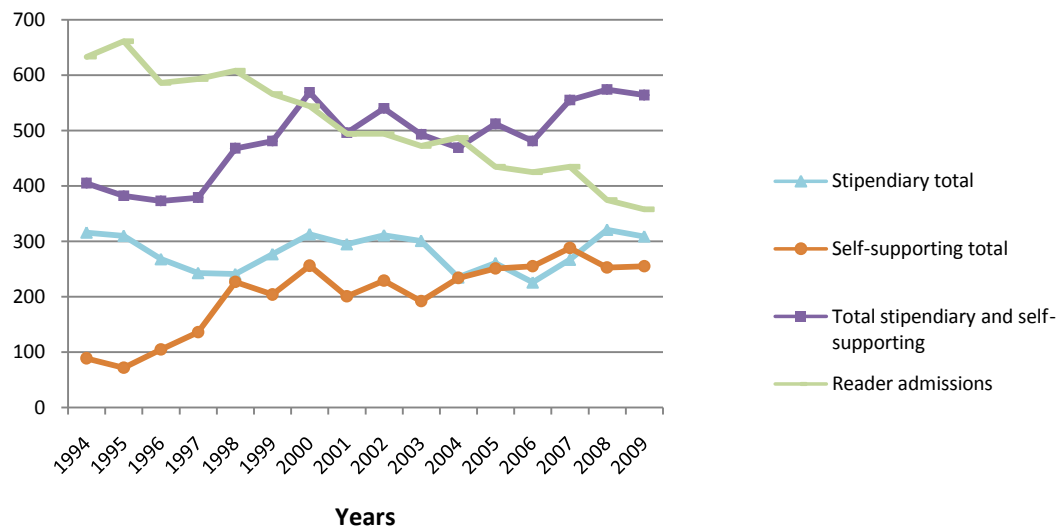
Notes:

1. These figures should be viewed with great caution and should be treated only as pointers to future diocesan shares assuming that current national trends are maintained.

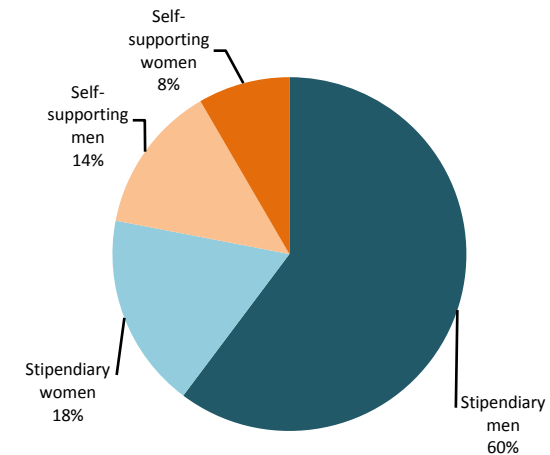


Ordinations and Reader admissions 1994 to 2009

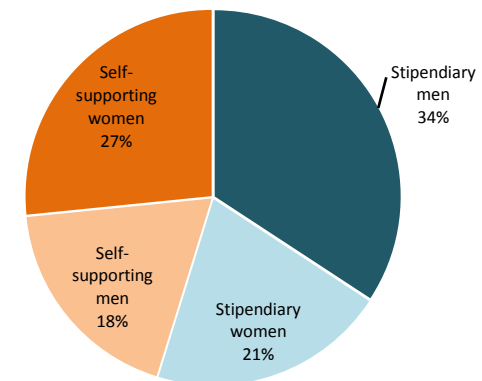
	Stipendiary men	Stipendiary women	Stipendiary total	Self-supporting men	Self-supporting women	Self-supporting total	Total stipendiary and self-supporting	Readers
1994	244	72	316	55	34	89	405	633
1995	245	65	310	30	42	72	382	661
1996	201	67	268	46	59	105	373	586
1997	186	57	243	69	67	136	379	593
1998	174	67	241	100	127	227	468	608
1999	199	78	277	101	103	204	481	566
2000	223	90	313	106	150	256	569	544
2001	190	105	295	92	109	201	496	494
2002	199	112	311	101	128	229	540	494
2003	181	120	301	79	113	192	493	472
2004	143	92	235	94	140	234	469	487
2005	158	103	261	112	139	251	512	435
2006	128	98	226	106	149	255	481	425
2007	163	104	267	128	160	288	555	435
2008	197	124	321	103	150	253	574	375
2009	193	116	309	105	150	255	564	358



1994



2009



Research
& Statistics



Notes

- 1 Stipendiary figures are compiled from information supplied by the Church Commissioners.
- 2 Self-supporting (including OLM figures) are compiled from information supplied by the Ministry Division.
- 3 Stipendiary figures from 2005 onwards treat ordinations to part-time ministry as whole ordinations, not full-time equivalents.

Total income of Parochial Church Councils 1964 to 2008

Excluding Europe and Cathedrals

Year	Tax-efficient planned giving				Total unrestricted direct giving				Total unrestricted voluntary income				Unrestricted			Restricted			Total income		
	Net (£ 000s)		Weekly average per subscriber, £		(£ 000s)		Weekly average per Electoral Roll member, £		(£ 000s)		Weekly average per Electoral Roll member, £		recurring income (£m)		one off (£m)	recurring income (£m)	one off (£m)	recurring income (£m)	one off (£m)	Total (£m)	
	Actual	Real terms	Actual	Real terms	Actual	Real terms	Actual	Real terms	Actual	Real terms	Actual	Real terms	Actual	Real terms	Actual	Actual	Actual	Actual	Actual	Actual	
1964	2,113	31,963	0.32	4.88	14,961	226,311	0.11	1.59	20,033	303,034	0.14	2.13	22.11	334.42	-	-	-	-	-	-	
1970	3,325	38,606	0.38	4.42	15,847	183,997	0.12	1.38	22,110	256,715	0.17	1.93	26.40	306.48	-	-	-	-	-	-	
1980	17,692	56,805	0.94	3.02	51,521	165,422	0.55	1.75	72,798	233,737	0.77	2.48	85.88	275.74	-	-	-	-	-	-	
1990	71,130	121,164	3.38	5.75	141,076	240,310	1.94	3.31	195,193	332,494	2.69	4.58	237.39	404.36	-	-	-	-	-	-	
1991	77,902	125,343	3.72	5.98	152,549	245,450	2.04	3.28	212,974	342,673	2.85	4.59	256.80	413.18	-	-	-	-	-	-	
1992	86,617	134,335	4.13	6.41	164,854	255,672	2.17	3.37	230,005	356,715	3.03	4.70	273.55	424.24	-	-	-	-	-	-	
1993	95,301	145,492	4.53	6.91	175,898	268,535	2.29	3.50	246,050	375,633	3.21	4.90	287.42	438.79	-	-	-	-	-	-	
1994	103,745	154,646	4.93	7.34	187,468	279,446	2.44	3.63	262,886	391,866	3.42	5.10	307.60	458.52	-	-	-	-	-	-	
1995	111,045	159,976	5.29	7.62	197,163	284,042	2.58	3.72	275,388	396,736	3.61	5.20	327.53	471.86	-	-	-	-	-	-	
1996	118,111	166,144	5.62	7.91	205,417	288,956	3.06	4.31	288,358	405,627	4.30	6.05	344.90	485.16	-	-	-	-	-	-	
1997	124,439	169,711	5.97	8.14	215,599	294,036	3.13	4.27	305,345	416,432	4.43	6.04	374.32	510.51	-	-	-	-	-	-	
1998	132,114	174,206	6.37	8.40	244,338	322,184	3.49	4.60	314,933	415,271	4.50	5.93	403.80	532.45	36	54	63	457	100	557	
1999	145,752	189,284	6.80	8.84	253,000	328,563	3.59	4.66	326,377	423,856	4.63	6.01	418.56	543.57	37	55	69	473	106	579	
2000	157,922	199,188	6.73	8.49	268,541	338,712	3.75	4.73	346,856	437,491	4.84	6.11	442.48	558.10	39	57	86	499	126	625	
2001	179,669	222,566	7.04	8.72	282,244	349,631	3.96	4.90	365,851	453,200	5.13	6.35	462.66	573.13	40	61	88	523	128	652	
2002	189,904	231,506	7.25	8.83	296,382	361,311	4.71	5.74	385,861	470,392	6.13	7.48	486.60	593.20	46	61	81	547	128	675	
2003	201,272	238,462	7.55	8.94	306,667	363,332	4.78	5.66	401,600	475,806	6.25	7.41	506.84	600.49	54	63	92	570	146	716	
2004	215,085	247,457	8.00	9.20	323,403	372,078	4.96	5.71	423,452	487,185	6.49	7.47	538.03	619.01	53	67	101	605	154	759	
2005	224,636	251,312	8.26	9.24	335,095	374,888	5.08	5.68	440,574	492,892	6.68	7.47	561.14	627.78	55	73	103	634	158	792	
2006	236,625	256,573	8.63	9.36	348,716	378,113	5.30	5.74	459,800	498,562	6.98	7.57	585.40	634.75	59	75	107	660	166	826	
2007	247,822	257,658	9.27	9.64	368,713	383,347	6.04	6.28	485,131	504,386	7.95	8.27	619.33	643.91	73	122	84	741	157	898	
2008	261,354	261,354	9.77	9.77	383,862	383,862	6.26	6.26	504,818	504,818	8.23	8.23	650.94	650.94	70	117	87	768	157	925	

- Figures in "Real terms" have been adjusted by the Retail Price Index to reflect 2008 purchasing power.
- "Total voluntary income" = "direct giving" (planned giving plus church collections and boxes) plus "other voluntary income" (all other voluntary income for ordinary expenditure excluding income tax, e.g. fund-raising events, net profit on magazine/bookstall, sundry donations.)
- "Total recurring income" = "total voluntary income" (see above) plus "other recurring income" (dividends and interest, recurring diocesan and other grants, and all other income for expenditure on ordinary purposes of the PCC, net surplus from church hall or other buildings, income from endowments or trust funds if used for ordinary purposes.)
- Tax efficient planned giving includes regular Gift Aid donations
- Unrestricted income is income that may be used by the PCC for general church expenses. Restricted income is income which may not be used for any purpose other than as specified by the donor. (Income which a PCC designates for a specified purpose is considered to be unrestricted, since the PCC and not the donor is determining how it is to be used.)
- Recurring income includes direct giving, other voluntary income and any other recurring income. "One off income" includes insurance claims, non-recurring grants, legacies, special appeals and the sale of fixed assets.

Charitable giving and total expenditure 1964 to 2008

Excluding Europe and Cathedrals

Year	Total charitable donations (£m)		Total recurring expenditure (£m)		Capital expenditure (£m)	Total expenditure (£m)
	Actual	Real terms	Actual	Real terms	Actual	Actual
1964	2.17	32.87	21.71	328.42	-	-
1970	2.59	30.11	28.04	325.54	-	-
1980	8.48	27.23	77.85	249.95	-	-
1990	24.57	41.86	227.31	387.21	-	-
1991	25.95	41.75	250.70	403.38	-	-
1992	26.37	40.89	270.37	419.31	-	-
1993	24.99	38.15	289.45	441.88	-	-
1994	25.81	38.48	307.70	458.66	-	-
1995	25.15	36.24	320.20	461.29	-	-
1996	25.36	35.67	338.67	476.40	-	-
1997	26.87	36.65	365.43	498.38	-	-
1998	35.30	46.55	415.20	547.48	103	518
1999	36.95	47.99	437.05	567.59	127	564
2000	37.46	47.25	458.34	578.10	145	603
2001	41.42	51.31	483.12	598.47	145	628
2002	44.40	54.12	513.85	626.41	149	663
2003	41.95	49.70	534.98	633.83	162	697
2004	45.31	52.13	567.93	653.41	159	727
2005	50.80	56.83	600.76	672.10	178	779
2006	46.55	50.47	617.71	669.78	175	793
2007	50.51	52.51	654.13	680.10	184	838
2008	51.72	51.72	680.17	680.17	194	874

- Figures in "Real terms" have been adjusted by the Retail Price Index to reflect 2008 purchasing power.
- Total recurring expenditure = the total of ALL expenditure (including charitable giving) for the ordinary purposes of the PCC i.e. excluding only non-recurring items of capital expenditure and non-revenue items.
- "Recurring expenditure" includes donations to charities, parish share/quota, clergy expenses, church running costs, costs relating to trading, salaries and support costs. "Capital expenditure" includes major repairs, redecoration and new building work.



Combined unrestricted and restricted tax-efficient planned giving to PCCs 2007 and 2008

Provinces of Canterbury and York (excluding Europe and Cathedrals)

Diocese		Subscribers		Amounts, £000s (net)		Weekly average per subscriber, £	
		2007	2008	2007	2008	2007	2008
1 Bath & Wells	C	16,500	15,800	6,900	7,300	7.97	8.87
2 Birmingham	C	7,800	7,900	5,100	5,000	12.67	12.12
3 Blackburn	Y	13,500	14,800	5,000	5,500	7.18	7.14
4 Bradford	Y	5,400	5,000	2,900	2,800	10.46	10.81
5 Bristol	C	8,900	7,900	4,900	4,900	10.66	11.96
6 Canterbury	C	10,600	10,600	4,700	5,100	8.63	9.28
7 Carlisle	Y	9,500	8,900	3,100	3,200	6.28	6.83
8 Chelmsford	C	18,200	18,200	9,800	9,800	10.39	10.36
9 Chester	Y	16,200	16,400	8,600	8,900	10.24	10.41
10 Chichester	C	20,300	21,200	9,900	10,300	9.33	9.38
11 Coventry	C	8,100	8,500	3,900	4,200	9.15	9.38
12 Derby	C	8,200	8,200	4,000	3,900	9.39	9.26
13 Durham	Y	8,700	8,700	3,200	3,300	7.08	7.32
14 Ely	C	8,100	7,900	3,800	4,200	9.13	10.20
15 Exeter	C	14,800	15,200	5,500	5,600	7.19	7.15
16 Gloucester	C	11,300	10,400	4,300	5,100	7.37	9.51
17 Guildford	C	14,700	14,500	10,600	11,600	13.84	15.42
18 Hereford	C	7,600	7,600	2,100	2,200	5.41	5.61
19 Leicester	C	10,400	10,500	4,000	3,900	7.36	7.13
20 Lichfield	C	16,800	17,200	7,000	7,000	7.96	7.86
21 Lincoln	C	11,300	11,100	3,200	3,200	5.38	5.55
22 Liverpool	Y	10,500	10,800	4,900	5,000	8.87	8.95
23 London	C	25,100	25,300	21,100	24,200	16.15	18.39
24 Manchester	Y	13,300	13,000	5,800	6,000	8.44	8.81
25 Newcastle	Y	7,800	7,700	2,700	2,800	6.57	7.16
26 Norwich	C	9,700	10,000	3,900	4,000	7.81	7.61
27 Oxford	C	27,100	29,200	15,600	17,500	11.07	11.53
28 Peterborough	C	10,200	9,700	4,000	4,300	7.59	8.54
29 Portsmouth	C	7,400	7,200	3,100	3,100	8.14	8.25
30 Ripon & Leeds	Y	8,000	8,000	3,400	3,400	8.09	8.26
31 Rochester	C	13,600	13,200	8,400	8,500	11.92	12.44
32 St. Albans	C	17,100	17,300	8,900	9,500	10.03	10.54
33 St. Edms & Ipswich	C	11,300	10,700	3,700	3,700	6.36	6.64
34 Salisbury	C	18,500	19,200	7,200	7,500	7.49	7.49
35 Sheffield	Y	6,900	6,800	5,100	4,600	14.29	12.94
36 Sodor & Man*	Y	100	100	100	100	13.05	16.30
37 Southwark	C	19,800	19,700	11,900	13,100	11.56	12.76
38 Southwell & Nottingham	Y	12,100	11,600	4,500	4,800	7.21	7.93
39 Truro	C	5,700	5,500	1,800	1,800	6.23	6.39
40 Wakefield	Y	7,300	7,100	3,200	3,400	8.51	9.26
41 Winchester	C	13,900	14,500	7,300	8,000	10.18	10.62
42 Worcester	C	7,400	7,700	3,200	3,400	8.25	8.54
43 York	Y	14,300	13,500	5,300	5,400	7.17	7.65
Totals Province of Canterbury	C	380,100	382,100	190,000	202,200	9.61	10.18
Totals Province of York	Y	133,500	132,400	57,900	59,200	8.34	8.60
Totals CHURCH OF ENGLAND		513,600	514,500	247,900	261,400	9.28	9.77

Research
& Statistics



- 1 Figures for Sodor & Man are not strictly comparable with those for toehr dioceses because of different income tax arrangements in the Isle of Man
- 2 "Tax efficient" planned giving includes regular Gift Aid donations
- 3 "Unrestricted income" is income that may be used by the PCC for general church expenses. "Restricted income" is income which may not be used for any purpose other than as specified by the donor. (Income which a PCC designates for a specified purpose is considered to be unrestricted, since the PCC and not the donor is determining how it is to be used.)

Unrestricted direct and other giving to PCCs 2008

Provinces of Canterbury and York (excluding Europe and Cathedrals)

											Comparable figures for 2007				
Diocese		Tax efficient planned giving (£ 000s)	All other giving (£ 000s) ²	Total direct giving (£ 000s)	Percentage of direct giving which is planned tax efficient ¹	Direct giving per week oer Electoral Roll member, £	Income tax on planned giving (£ 000s) ¹	Other voluntary income (£ 000s) ²	Total voluntary income (£ 000s)		Total direct giving (£ 000s)	Percentage of direct giving which is planned tax efficient	Direct giving per week oer Electoral Roll member, £	Total voluntary income (£ 000s)	
1 Bath & Wells	C	6,910	3,760	10,670	65	5.80	2,030	1,240	13,940		10,210	64	5.46	13,480	
2 Birmingham	C	4,790	2,890	7,670	62	8.59	1,370	670	9,720		6,990	68	7.68	8,960	
3 Blackburn	Y	5,400	3,380	8,790	61	5.06	1,580	1,030	11,400		7,480	66	4.14	10,010	
4 Bradford	Y	2,700	1,410	4,110	66	7.00	830	440	5,370		4,270	67	7.25	5,540	
5 Bristol	C	4,720	2,060	6,780	70	8.69	1,440	610	8,820		6,360	74	7.93	8,320	
6 Canterbury	C	4,840	2,330	7,170	67	6.73	1,290	860	9,310		6,930	66	6.47	9,070	
7 Carlisle	Y	3,050	2,080	5,130	59	4.94	890	750	6,780		5,070	59	4.77	6,720	
8 Chelmsford	C	9,290	4,740	14,030	66	5.85	2,780	1,860	18,660		14,150	66	6.00	18,480	
9 Chester	Y	8,610	4,010	12,630	68	5.56	2,420	1,060	16,110		12,230	69	5.52	15,580	
10 Chichester	C	9,870	5,030	14,900	66	5.40	3,120	1,660	19,680		14,580	63	5.18	19,760	
11 Coventry	C	4,070	1,720	5,790	70	6.68	1,160	1,100	8,050		5,630	67	6.26	7,640	
12 Derby	C	3,570	2,050	5,620	64	5.97	1,030	940	7,590		5,770	65	6.22	7,580	
13 Durham	Y	3,250	2,540	5,790	56	5.09	940	840	7,570		5,830	55	4.91	7,620	
14 Ely	C	4,020	2,310	6,330	63	6.53	1,160	740	8,230		6,000	62	6.30	7,800	
15 Exeter	C	5,480	3,390	8,870	62	5.51	1,680	1,740	12,290		8,700	61	5.43	11,820	
16 Gloucester	C	4,930	2,760	7,690	64	6.43	1,550	1,100	10,340		6,460	64	5.62	8,540	
17 Guildford	C	10,900	3,260	14,160	77	9.46	3,080	680	17,920		13,380	74	9.16	16,960	
18 Hereford	C	2,090	1,410	3,510	60	3.87	670	1,170	5,340		3,560	57	3.88	5,190	
19 Leicester	C	3,870	1,810	5,680	68	6.84	1,150	840	7,660		5,650	69	6.61	7,420	
20 Lichfield	C	6,830	4,430	11,260	61	5.00	1,960	1,800	15,020		11,180	60	4.82	15,030	
21 Lincoln	C	3,150	2,420	5,570	57	4.04	920	1,330	7,830		5,580	56	3.78	7,780	
22 Liverpool	Y	4,830	3,260	8,090	60	5.66	1,310	920	10,320		7,970	59	5.72	10,250	
23 London	C	23,110	12,270	35,380	65	9.90	6,590	2,820	44,790		32,620	59	9.74	41,690	
24 Manchester	Y	5,680	3,470	9,150	62	5.46	1,700	1,260	12,110		9,050	63	5.33	12,030	
25 Newcastle	Y	2,750	1,290	4,030	68	4.81	750	520	5,300		3,930	66	4.72	5,180	
26 Norwich	C	3,850	2,860	6,710	57	6.46	1,170	1,500	9,380		6,620	58	6.44	9,290	
27 Oxford	C	16,730	7,250	23,980	70	8.61	4,980	2,360	31,320		21,880	68	7.98	28,560	
28 Peterborough	C	4,140	2,020	6,160	67	6.29	1,260	1,100	8,520		6,030	65	6.34	8,430	
29 Portsmouth	C	3,030	1,470	4,500	67	5.14	910	690	6,090		4,540	67	5.32	6,100	
30 Ripon & Leeds	Y	3,370	1,750	5,120	66	5.86	950	840	6,910		5,060	65	6.36	6,830	
31 Rochester	C	8,060	3,220	11,280	71	7.36	2,290	970	14,540		11,030	71	7.44	14,150	
32 St. Albans	C	9,280	4,400	13,680	68	6.92	2,860	1,100	17,640		12,760	68	6.65	16,610	
33 St. Edms & Ipswich	C	3,500	2,300	5,800	60	4.84	1,040	1,030	7,860		5,730	61	4.73	7,920	
34 Salisbury	C	7,300	3,620	10,920	67	5.19	2,250	1,520	14,690		10,580	64	5.00	14,030	
35 Sheffield	Y	4,350	1,810	6,160	71	6.82	1,200	620	7,980		6,640	70	7.33	8,510	
36 Sodor & Man	Y	100	700	800	12	5.98	0	110	910		750	8	5.38	840	
37 Southwark	C	12,190	7,060	19,260	63	8.08	4,030	1,280	24,570		17,500	63	7.52	22,050	
38 Southwell & Nottingham	Y	4,590	1,890	6,470	71	6.69	1,220	750	8,450		6,500	69	6.64	8,560	
39 Truro	C	1,780	1,440	3,220	55	3.98	580	610	4,410		3,170	56	3.89	4,330	
40 Wakefield	Y	3,280	1,820	5,090	64	5.03	980	840	6,910		5,060	62	4.92	6,760	
41 Winchester	C	7,710	4,600	12,310	63	6.18	2,290	1,270	15,860		11,890	60	6.18	15,330	
42 Worcester	C	3,340	1,830	5,160	65	5.33	1,040	810	7,010		4,920	63	4.93	6,640	
43 York	Y	5,040	3,420	8,470	60	4.83	1,620	1,510	11,600		8,480	59	4.85	11,730	
Total Province of Canterbury	C	193,310	100,720	294,030	66	6.62	57,680	35,380	387,090		280,400	64	6.36	368,980	
Totals Province of York	Y	57,010	32,830	89,830	63	5.49	16,400	11,500	117,730		88,310	63	5.39	116,160	
Totals CHURCH OF ENGLAND		250,320	133,540	383,860	65	6.32	74,080	46,880	504,820		368,710	64	6.10	485,130	

Research
& Statistics



Notes:

- 1 Gift Aid and covenants
- 2 Excluding appeals and donations for special purposes
- 3 Figures for Sodor and Man are not strictly comparable with those for other dioceses because of difference income tax arrangements in the Isle of Man.
- 4 The total direct giving for the Diocese in Europe in 2008 was £6,075,913 an average of £11.07 per week per electoral roll member, in 2007 it was £4,930,608 an average of £9.32 per week per electoral roll member.
- 5 "Total voluntary income" = "direct giving" (planned giving plus church collections and boxes) plus "other voluntary income" (all other voluntary income for ordinary expenditure excluding income tax, e.g. fund-raising events, net profit on magazine/bookstall, sundry donations.)
- 6 "Total recurring income" = "total voluntary income" (see above) plus "other recurring income" (dividends and interest, recurring diocesan and other grants, and all other income for expenditure on ordinary purposes of the PCC, net surplus from church hall or other buildings, income from endowments or trust funds if used for ordinary purposes.)
- 7 "Unrestricted income" is income that may be used by the PCC for general church expenses. "Restricted income" is income which may not be used for any purpose other than as specified by the donor. (Income which a PCC designates for a specified purpose is considered to be unrestricted, since the PCC and not the donor is determining how it is to be used.)
- 8 "Recurring income" includes direct giving, other voluntary income and any other recurring income. "One off income" includes insurance claims, non-recurring grants, legacies, special appeals and the sale of fixed assets.

Unrestricted recurring income 2007 and 2008

Provinces of Canterbury and York (excluding Europe and Cathedrals)

Research
& Statistics

			Total voluntary income £000s		Weekly average per Electoral Roll member £ per week		All other recurring income £000s		Total recurring income £000s		Percentage of recurring income which is 'voluntary income'	
Diocese			2007	2008	2007	2008	2007	2008	2007	2008	2007	2008
1 Bath & Wells	C		13,479	13,941	7.21	7.58	2,963	3,223	16,443	17,164	82	81
2 Birmingham	C		8,956	9,722	10	11	3,457	3,531	12,413	13,253	72	73
3 Blackburn	Y		10,010	11,397	6	7	2,598	2,942	12,608	14,339	79	79
4 Bradford	Y		5,544	5,374	9	9	956	1,094	6,500	6,469	85	83
5 Bristol	C		8,317	8,823	10	11	1,902	2,017	10,219	10,840	81	81
6 Canterbury	C		9,072	9,313	8	9	2,267	2,444	11,339	11,757	80	79
7 Carlisle	Y		6,716	6,776	6	7	1,540	1,610	8,256	8,387	81	81
8 Chelmsford	C		18,476	18,661	8	8	5,516	6,917	23,992	25,578	77	73
9 Chester	Y		15,583	16,111	7	7	3,531	4,023	19,114	20,133	82	80
10 Chichester	C		19,762	19,683	7	7	4,200	4,458	23,962	24,140	82	82
11 Coventry	C		7,642	8,046	8	9	2,014	2,462	9,656	10,509	79	77
12 Derby	C		7,583	7,593	8	8	2,022	2,263	9,605	9,856	79	77
13 Durham	Y		7,624	7,571	6	7	1,995	1,971	9,619	9,542	79	79
14 Ely	C		7,800	8,230	8	8	1,638	1,892	9,438	10,121	83	81
15 Exeter	C		11,816	12,286	7	8	2,921	3,337	14,736	15,624	80	79
16 Gloucester	C		8,544	10,344	7	9	2,192	2,473	10,736	12,817	80	81
17 Guildford	C		16,956	17,917	12	12	4,625	4,656	21,581	22,574	79	79
18 Hereford	C		5,191	5,339	6	6	1,121	1,118	6,312	6,458	82	83
19 Leicester	C		7,424	7,659	9	9	1,616	1,661	9,040	9,320	82	82
20 Lichfield	C		15,028	15,024	6	7	4,240	4,362	19,268	19,386	78	77
21 Lincoln	C		7,784	7,826	5	6	2,221	2,754	10,005	10,580	78	74
22 Liverpool	Y		10,246	10,317	7	7	3,272	3,572	13,518	13,889	76	74
23 London	C		41,689	44,788	12	13	20,311	22,718	62,000	67,507	67	66
24 Manchester	Y		12,028	12,112	7	7	2,934	3,005	14,962	15,117	80	80
25 Newcastle	Y		5,185	5,303	6	6	919	1,011	6,104	6,314	85	84
26 Norwich	C		9,289	9,383	9	9	2,252	2,356	11,541	11,740	80	80
27 Oxford	C		28,562	31,319	10	11	6,261	6,324	34,822	37,643	82	83
28 Peterborough	C		8,430	8,521	9	9	1,531	1,665	9,961	10,186	85	84
29 Portsmouth	C		6,098	6,090	7	7	1,625	2,000	7,723	8,090	79	75
30 Ripon & Leeds	Y		6,831	6,911	9	8	2,126	2,177	8,957	9,088	76	76
31 Rochester	C		14,154	14,536	10	9	4,536	4,922	18,690	19,458	76	75
32 St. Albans	C		16,614	17,636	9	9	4,411	4,898	21,025	22,534	79	78
33 St. Edms & Ipswich	C		7,920	7,864	7	7	1,491	1,554	9,411	9,418	84	84
34 Salisbury	C		14,034	14,695	7	7	2,962	3,233	16,997	17,928	83	82
35 Sheffield	Y		8,508	7,981	9	9	1,830	1,829	10,337	9,810	82	81
36 Sodor & Man	Y		837	911	6	7	221	291	1,058	1,203	79	76
37 Southwark	C		22,052	24,570	9	10	8,544	9,218	30,595	33,788	72	73
38 Southwell & Nottingham	Y		8,556	8,452	9	9	1,999	2,227	10,555	10,679	81	79
39 Truro	C		4,333	4,406	5	5	1,105	1,236	5,438	5,642	80	78
40 Wakefield	Y		6,757	6,914	7	7	1,944	1,842	8,701	8,756	78	79
41 Winchester	C		15,328	15,861	8	8	3,379	3,562	18,707	19,424	82	82
42 Worcester	C		6,644	7,011	7	7	2,071	2,204	8,715	9,215	76	76
43 York	Y		11,733	11,598	7	7	2,937	3,069	14,670	14,667	80	79
Totals Province of Canterbury	C		368,976	387,089	8	9	105,393	115,458	474,369	502,547	78	77
Totals Province of York	Y		116,155	117,729	7	7	28,803	30,664	144,958	148,392	80	79
Totals CHURCH OF ENGLAND			485,131	504,818	8	8	134,196	146,122	619,327	650,940	78	78



- 1 The total recurring income for the Diocese in Europe was £8,350,674 in 2007 and £10,183,076 in 2008.
- 2 "Total voluntary income" = "direct giving" (planned giving plus church collections and boxes) plus "other voluntary income" (all other voluntary income for ordinary expenditure excluding income tax, e.g. fund-raising events, net profit on magazine/bookstall, sundry donations.)
- 3 "Total recurring income" = "total voluntary income" (see above) plus "other recurring income" (dividends and interest, recurring diocesan and other grants, and all other income for expenditure on ordinary purposes of the PCC, net surplus from church hall or other buildings, income from endowments or trust funds if used for ordinary purposes.)
- 4 "Unrestricted income" is income that may be used by the PCC for general church expenses. "Restricted income" is income which may not be used for any purpose other than as specified by the donor. (Income which a PCC designates for a specified purpose is considered to be unrestricted, since the PCC and not the donor is determining how it is to be used.)
- 5 "Recurring income" includes direct giving, other voluntary income and any other recurring income. "One off income" includes insurance claims, non-recurring grants, legacies, special appeals and the sale of fixed assets.

Recurring expenditure 2007 and 2008

Provinces of Canterbury and York (excluding Europe and Cathedrals)

		Charitable donations		Church activities and administration £000s		Fund raising		Total recurring expenditure £000s		Charitable donations as percentage of expenditure	
		2007	2008	2007	2008	2007	2008	2007	2008	2007	2008
1 Bath & Wells	C	1,627	1,616	15,090	15,595	253	243	16,970	17,454	10	9
2 Birmingham	C	968	909	12,396	12,287	87	121	13,451	13,317	7	7
3 Blackburn	Y	700	739	13,192	14,214	297	299	14,189	15,252	5	5
4 Bradford	Y	459	418	6,606	7,054	74	86	7,139	7,558	6	6
5 Bristol	C	1,411	1,316	9,522	10,077	129	141	11,062	11,534	13	11
6 Canterbury	C	847	783	11,508	11,808	137	187	12,491	12,779	7	6
7 Carlisle	Y	525	517	8,164	8,227	114	98	8,802	8,842	6	6
8 Chelmsford	C	1,702	1,585	23,887	24,432	424	353	26,013	26,370	7	6
9 Chester	Y	1,480	1,435	18,341	18,813	172	298	19,992	20,546	7	7
10 Chichester	C	1,995	2,121	21,630	22,580	360	389	23,985	25,090	8	8
11 Coventry	C	874	933	9,092	9,714	88	107	10,055	10,754	9	9
12 Derby	C	688	616	8,891	9,007	160	110	9,739	9,732	7	6
13 Durham	Y	504	483	9,892	9,827	90	93	10,486	10,403	5	5
14 Ely	C	734	770	8,842	9,638	157	152	9,733	10,559	8	7
15 Exeter	C	965	933	14,025	14,721	243	237	15,233	15,891	6	6
16 Gloucester	C	763	1,759	10,383	11,959	206	193	11,351	13,911	7	13
17 Guildford	C	2,447	2,505	20,073	21,434	265	191	22,785	24,130	11	10
18 Hereford	C	388	409	5,726	5,779	137	148	6,250	6,336	6	6
19 Leicester	C	531	553	8,262	8,645	164	147	8,957	9,345	6	6
20 Lichfield	C	1,259	1,350	19,022	19,112	600	323	20,880	20,785	6	6
21 Lincoln	C	483	448	9,449	9,373	188	190	10,120	10,012	5	4
22 Liverpool	Y	1,003	1,043	13,431	14,572	260	348	14,694	15,962	7	7
23 London	C	6,423	5,519	57,750	60,776	1,134	1,239	65,306	67,534	10	8
24 Manchester	Y	857	939	15,114	14,967	303	290	16,273	16,196	5	6
25 Newcastle	Y	367	373	6,319	6,783	62	89	6,748	7,245	5	5
26 Norwich	C	618	575	11,123	11,583	224	229	11,964	12,388	5	5
27 Oxford	C	3,529	4,641	32,798	34,882	432	608	36,759	40,130	10	12
28 Peterborough	C	670	713	9,537	9,481	192	176	10,400	10,370	6	7
29 Portsmouth	C	427	418	6,873	7,294	129	116	7,430	7,829	6	5
30 Ripon & Leeds	Y	521	595	8,348	8,848	210	182	9,079	9,625	6	6
31 Rochester	C	1,954	1,944	18,903	19,993	406	343	21,263	22,280	9	9
32 St. Albans	C	2,422	2,356	19,155	19,632	240	243	21,817	22,230	11	11
33 St. Edms & Ipswich	C	666	455	9,332	9,655	244	253	10,242	10,364	6	4
34 Salisbury	C	1,259	1,358	15,387	16,096	318	301	16,964	17,755	7	8
35 Sheffield	Y	1,057	762	10,744	10,050	108	68	11,909	10,879	9	7
36 Sodor & Man	Y	69	85	1,068	1,100	4	2	1,140	1,187	6	7
37 Southwark	C	2,475	2,872	28,695	30,390	432	588	31,602	33,850	8	8
38 Southwell & Nottingham	Y	641	653	9,708	10,051	288	266	10,637	10,970	6	6
39 Truro	C	197	183	5,703	5,754	83	91	5,983	6,029	3	3
40 Wakefield	Y	478	420	8,891	9,111	143	131	9,511	9,662	5	4
41 Winchester	C	1,682	1,974	17,430	18,204	225	261	19,337	20,438	9	10
42 Worcester	C	548	551	8,303	8,853	158	128	9,010	9,533	6	6
43 York	Y	1,296	1,089	14,844	15,738	243	287	16,383	17,113	8	6
Totals Province of Canterbury	C	40,551	42,167	448,785	468,754	7,814	7,807	497,149	518,729	8	8
Totals Province of York	Y	9,957	9,550	144,659	149,353	2,367	2,538	156,984	161,442	6	6
Totals CHURCH OF ENGLAND		50,508	51,717	593,444	618,107	10,181	10,346	654,133	680,170	8	8



- 1 The total ordinary expenditure of the Diocese of Europe was £9,578,160 in 2008 and £7,709,017 in 2007. Charitable donations were £665,005 in 2008 and formed 7% of this expenditure, compared with £543,086 (7%) in 2007.
- 2 Total recurring expenditure = the total of ALL expenditure (including charitable giving) for the ordinary purposes of the PCC i.e. excluding only non-recurring items of capital expenditure and non-revenue items. "Recurring expenditure" includes donations to charities, parish share/quota, clergy expenses, church running costs, costs relating to trading, salaries and support costs. "Capital expenditure" includes major repairs, redecoration and new building work.