

FINDING OUT HOW YOUR BUILDING IS PERFORMING: AN INTRODUCTION

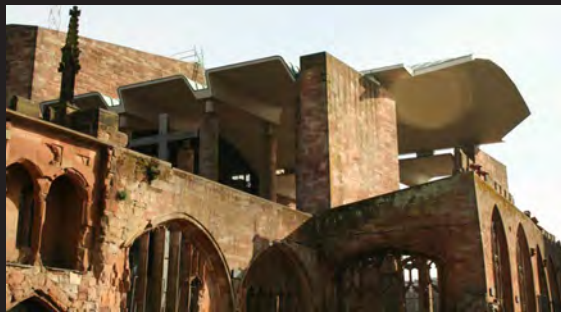
ROBYN PENDER

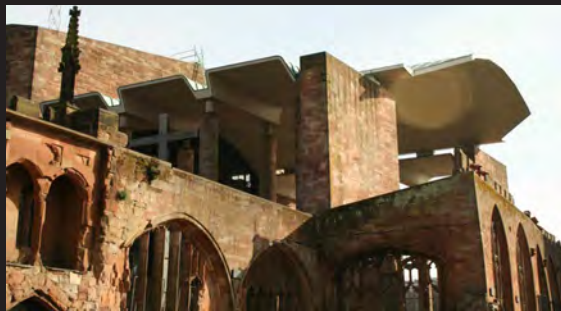
BUILDING CONSERVATION + RESEARCH TEAM

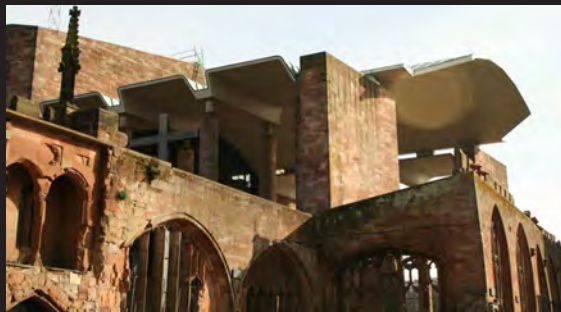


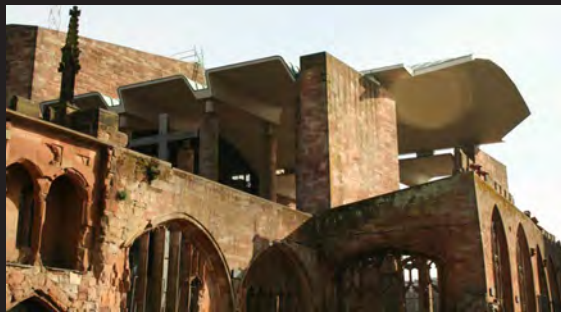
ENGLISH HERITAGE













**WHAT EXACTLY IS IT YOU
ARE TRYING TO DO?**

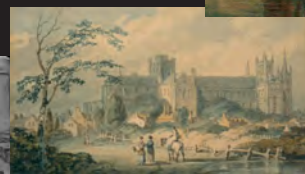
**WHAT DO YOU NEED TO
KNOW TO DO IT WELL?**

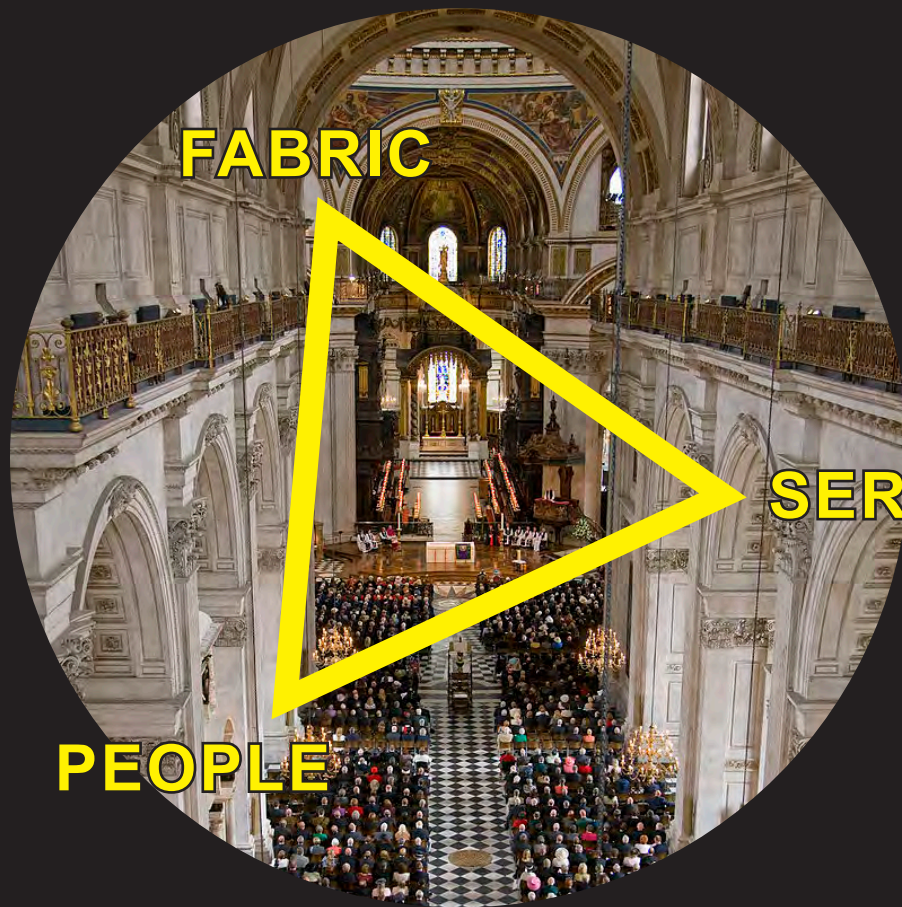












FABRIC

SERVICES

PEOPLE



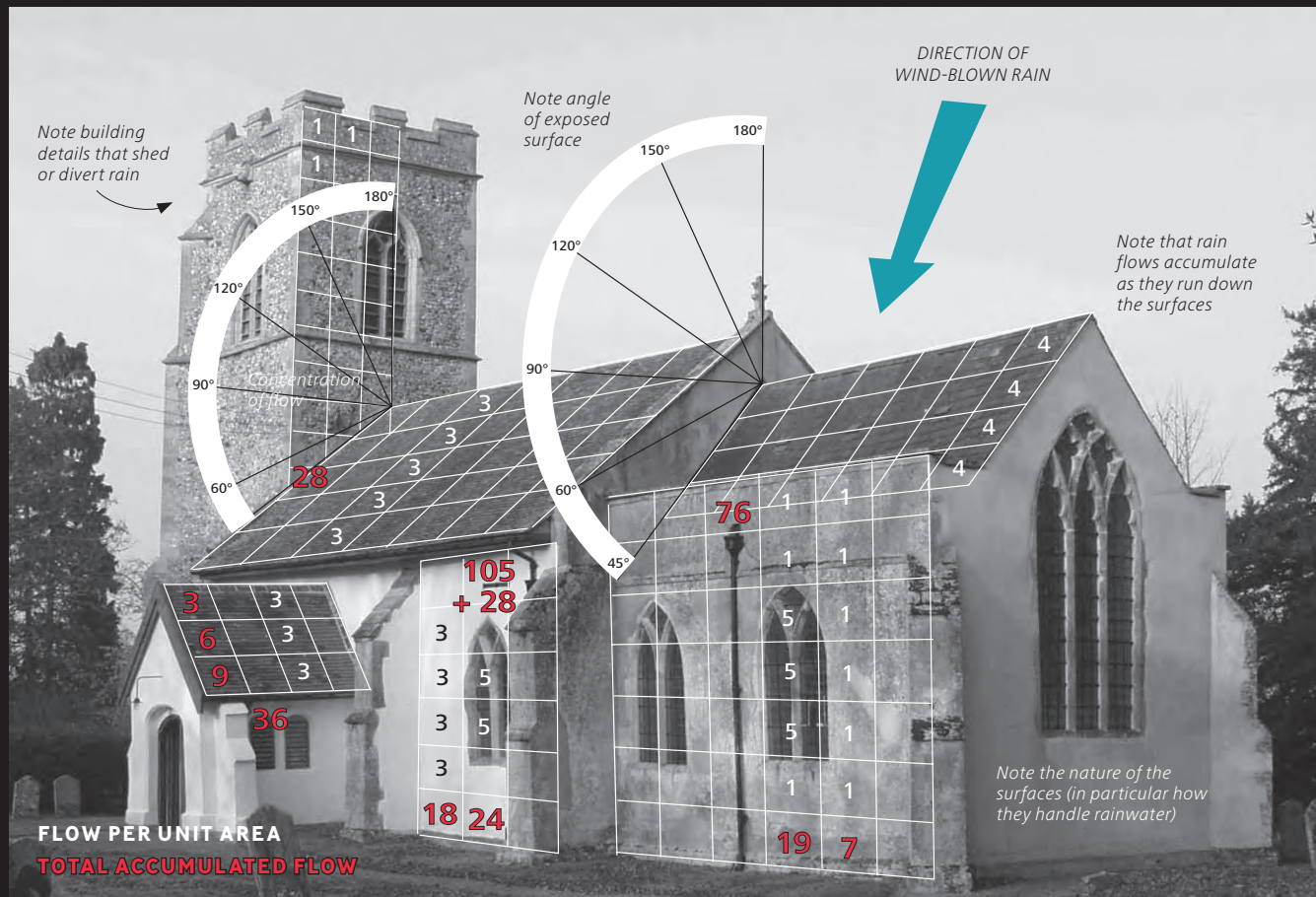
FABRIC

SERVICES

PEOPLE













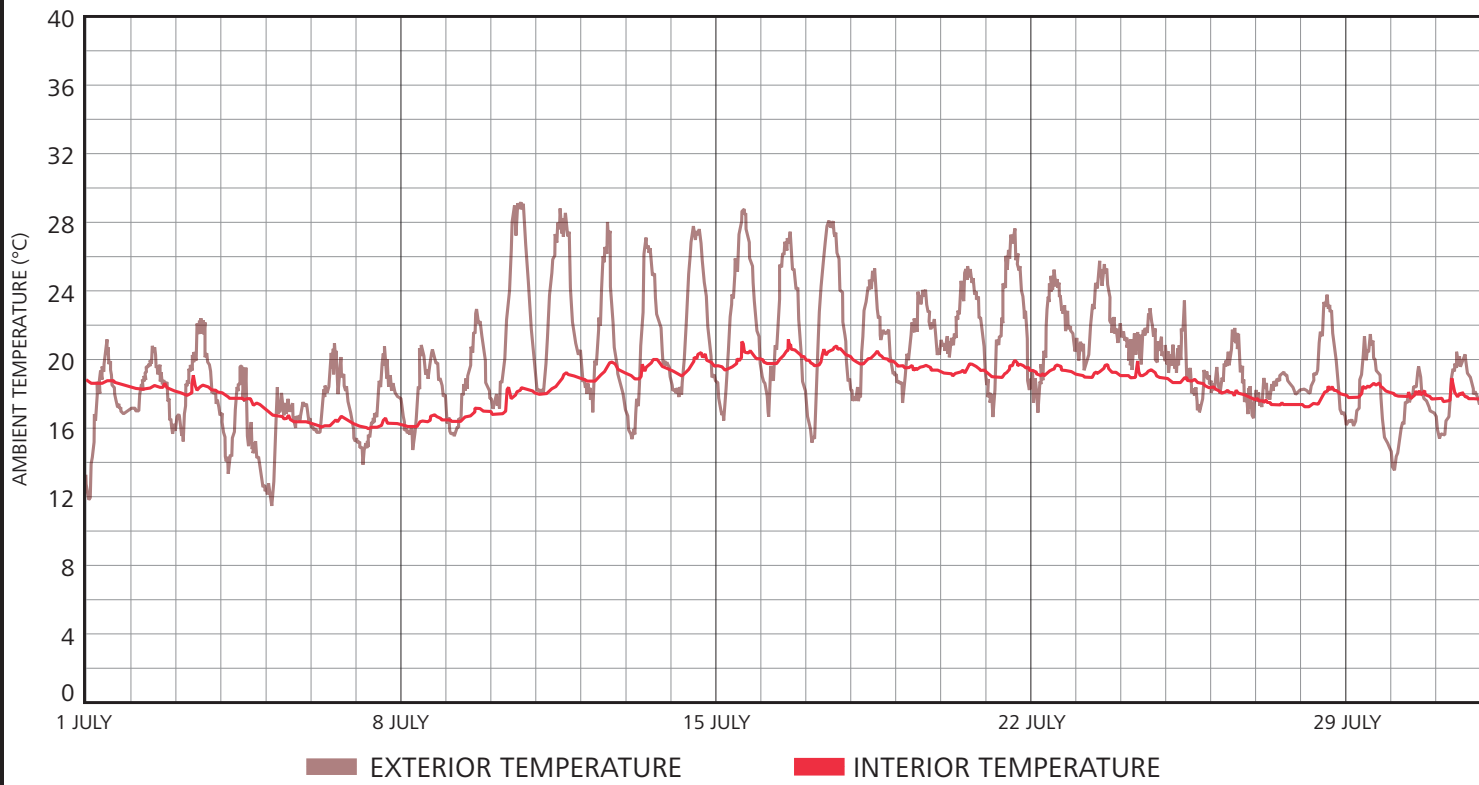


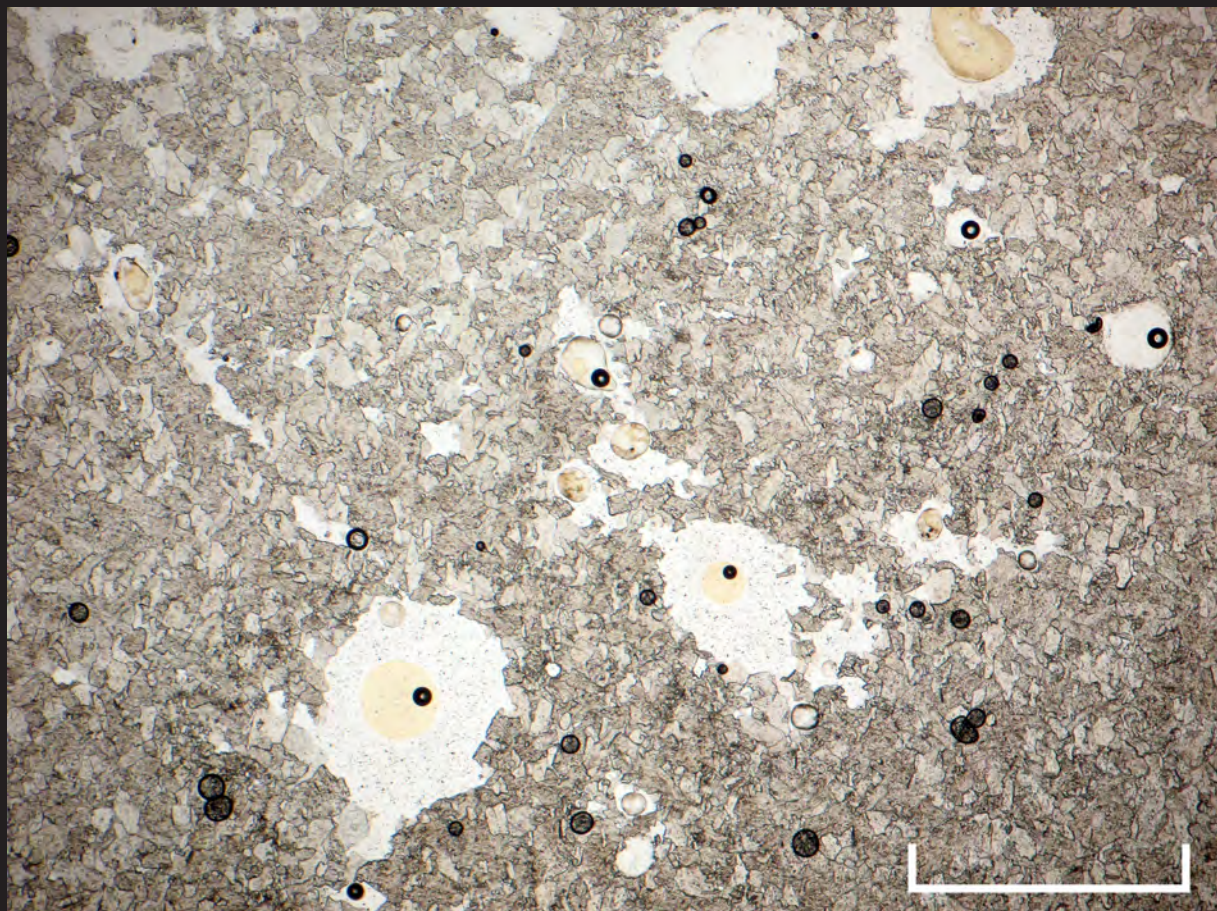


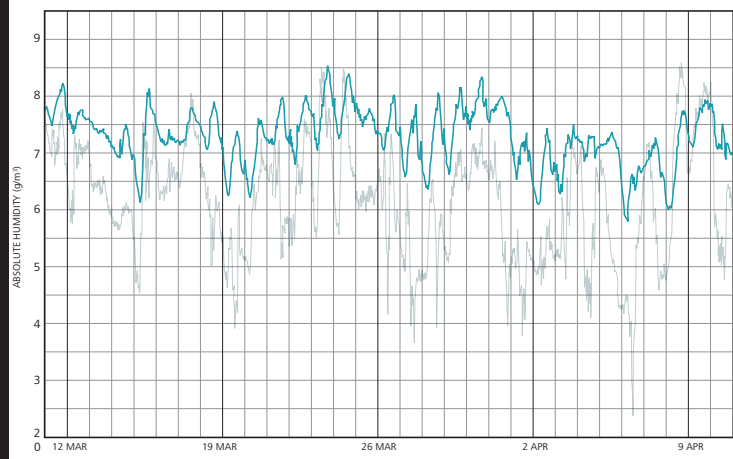
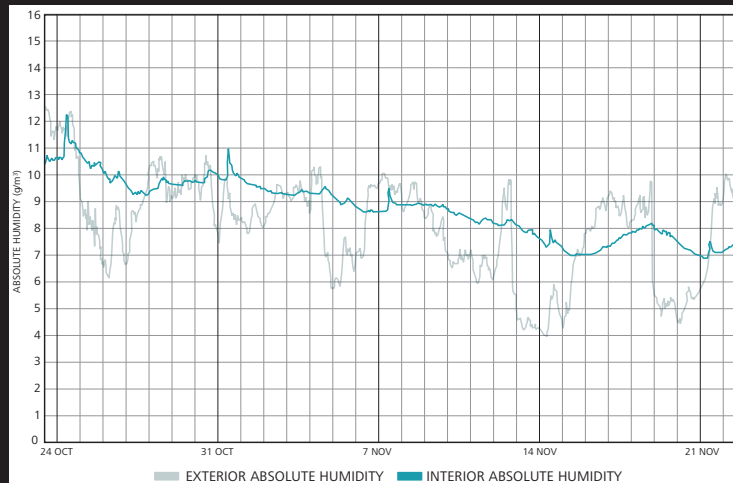












Sp1 28.2 °C

Sp2 15.6

 **FLIR**

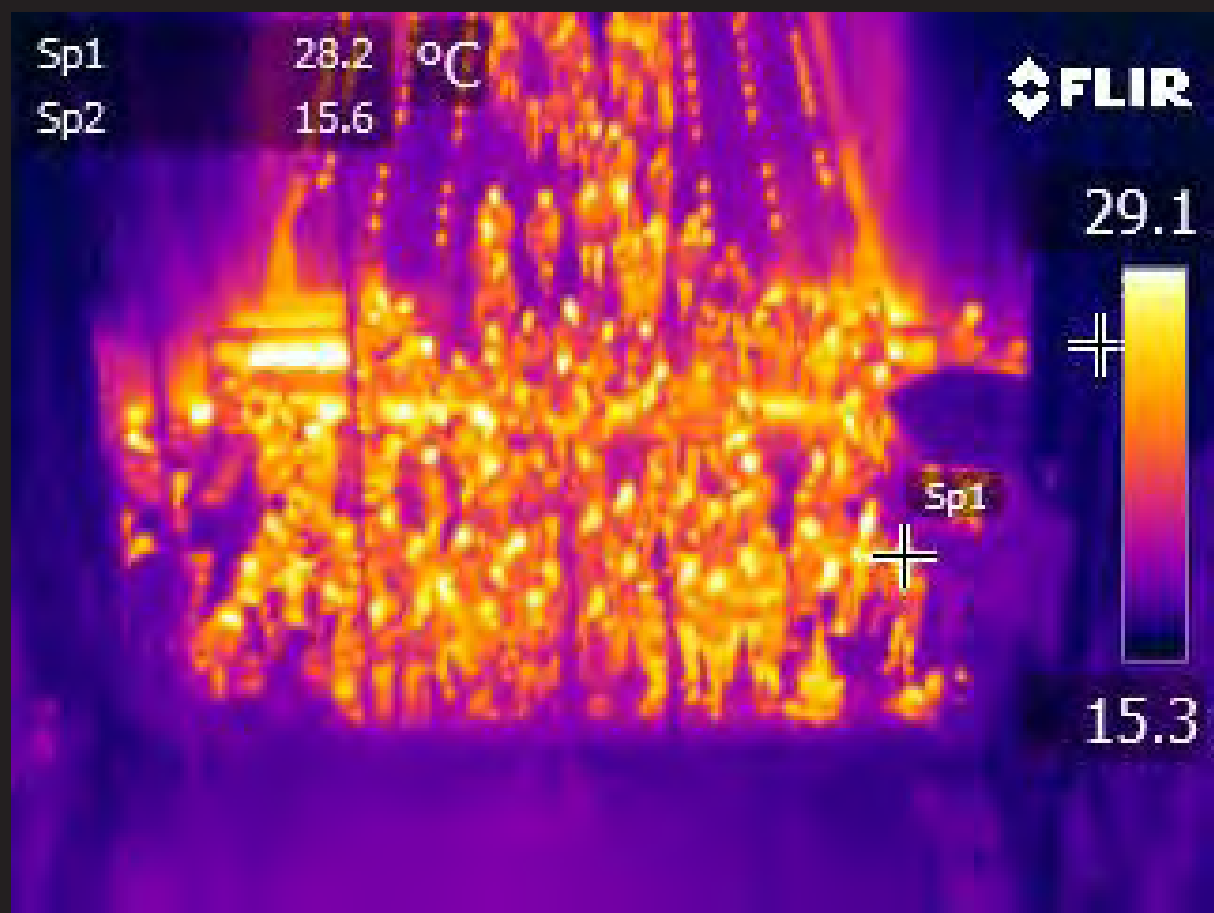
29.1



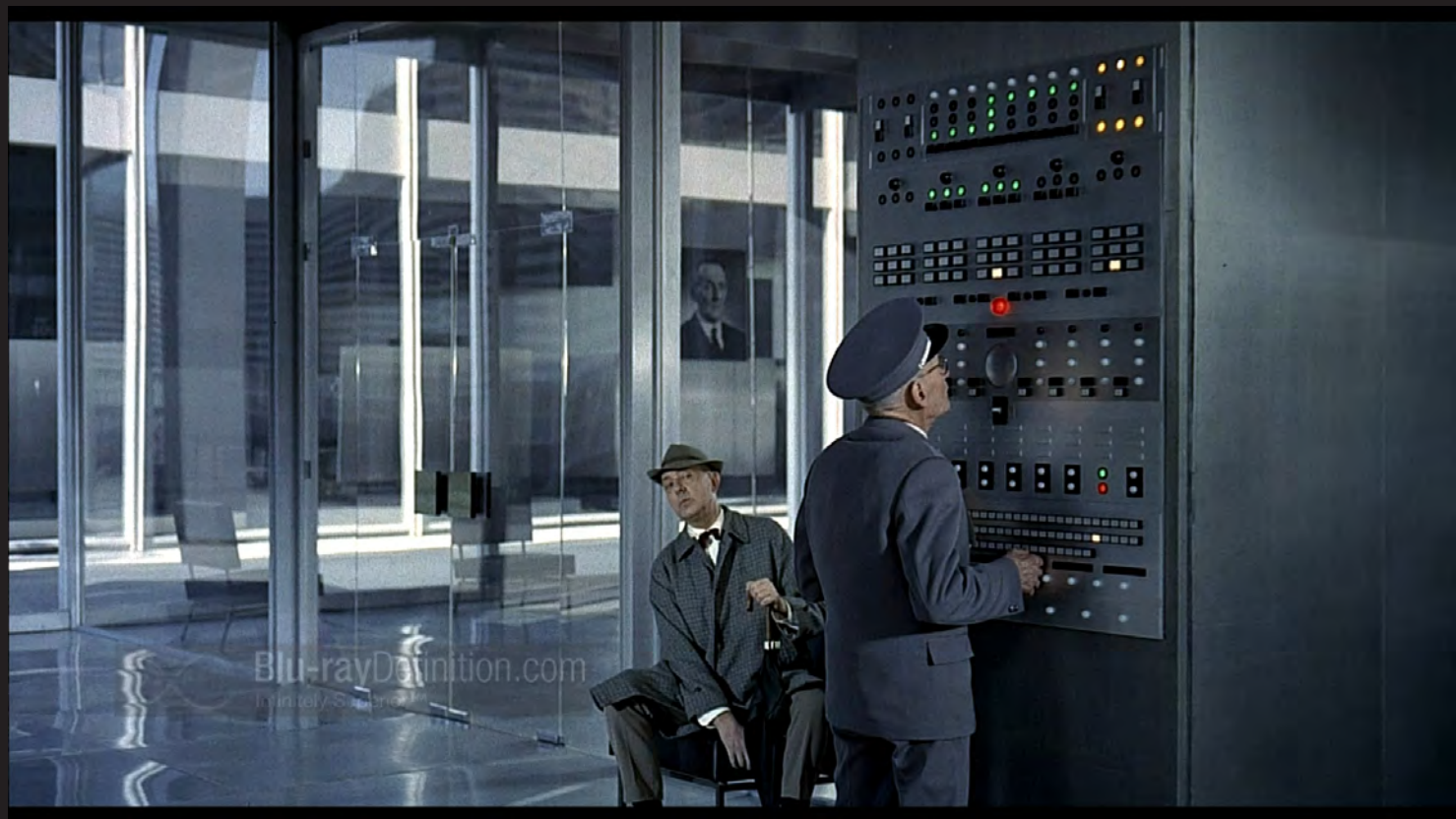
Sp1



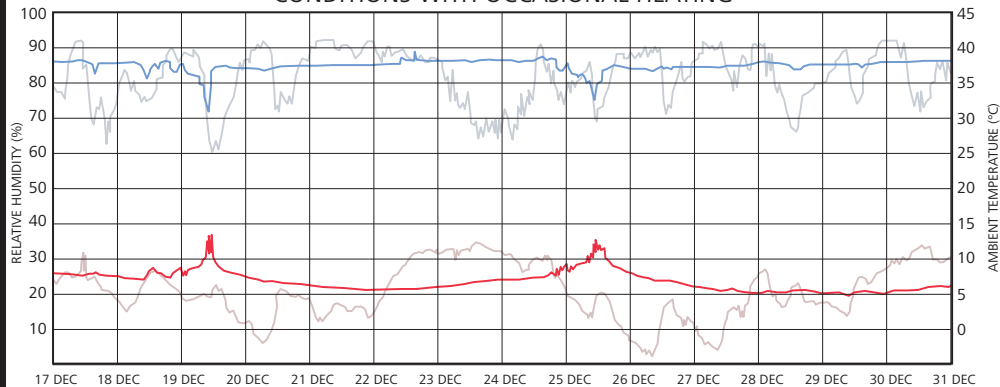
15.3



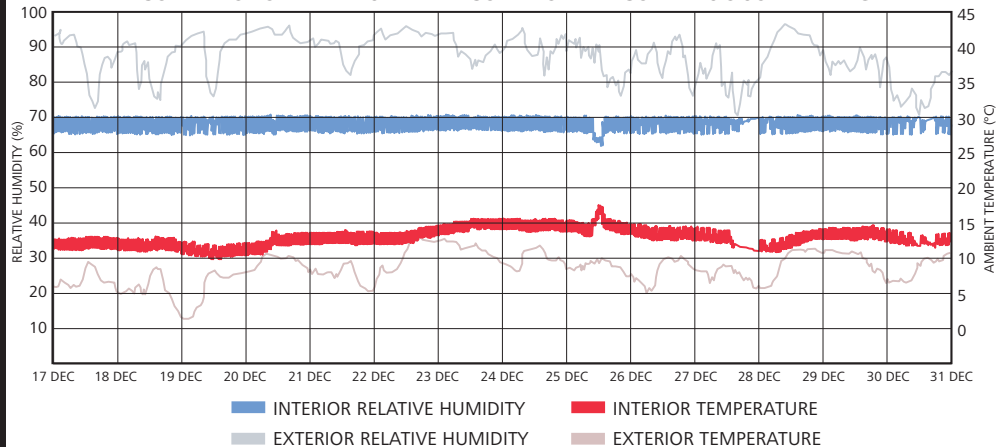




CONDITIONS WITH OCCASIONAL HEATING



CONDITIONS WITH HUMIDITY-CONTROLLED CONTINUOUS HEATING







FABRIC



SERVICES



PEOPLE

A collage of images related to the Church of San Sabote. The top left shows the exterior of the church, a modern building with a brick facade and a large cross. The top right shows the interior of the church, featuring a large mural of a figure in a green robe. The bottom left shows a large mural of a figure in a green robe. The bottom right shows the interior of the church, featuring a large mural of a figure in a green robe. The text "WHAT EXACTLY IS IT YOU ARE TRYING TO DO?" is overlaid in yellow, bold, sans-serif font with a black outline. A large white question mark is centered in the background.

**WHAT EXACTLY IS IT YOU
ARE TRYING TO DO?**

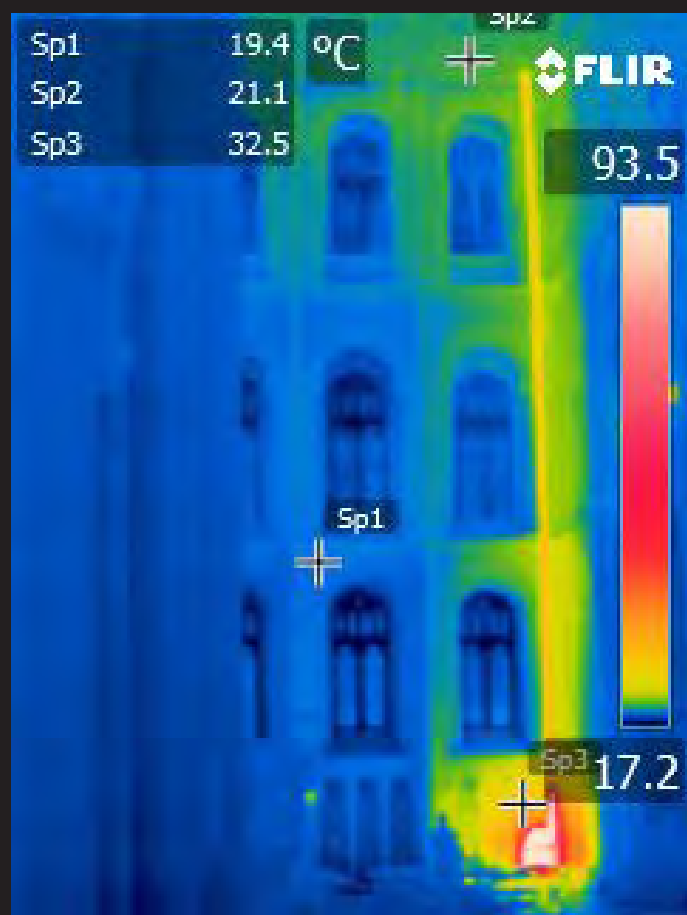
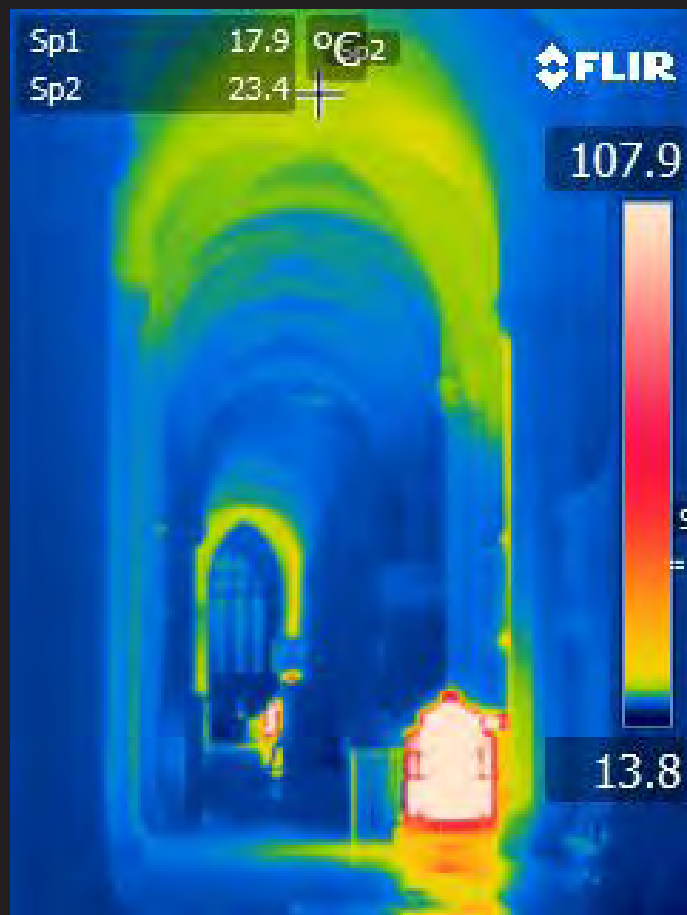
**WHAT DO YOU NEED TO
KNOW TO DO IT WELL?**





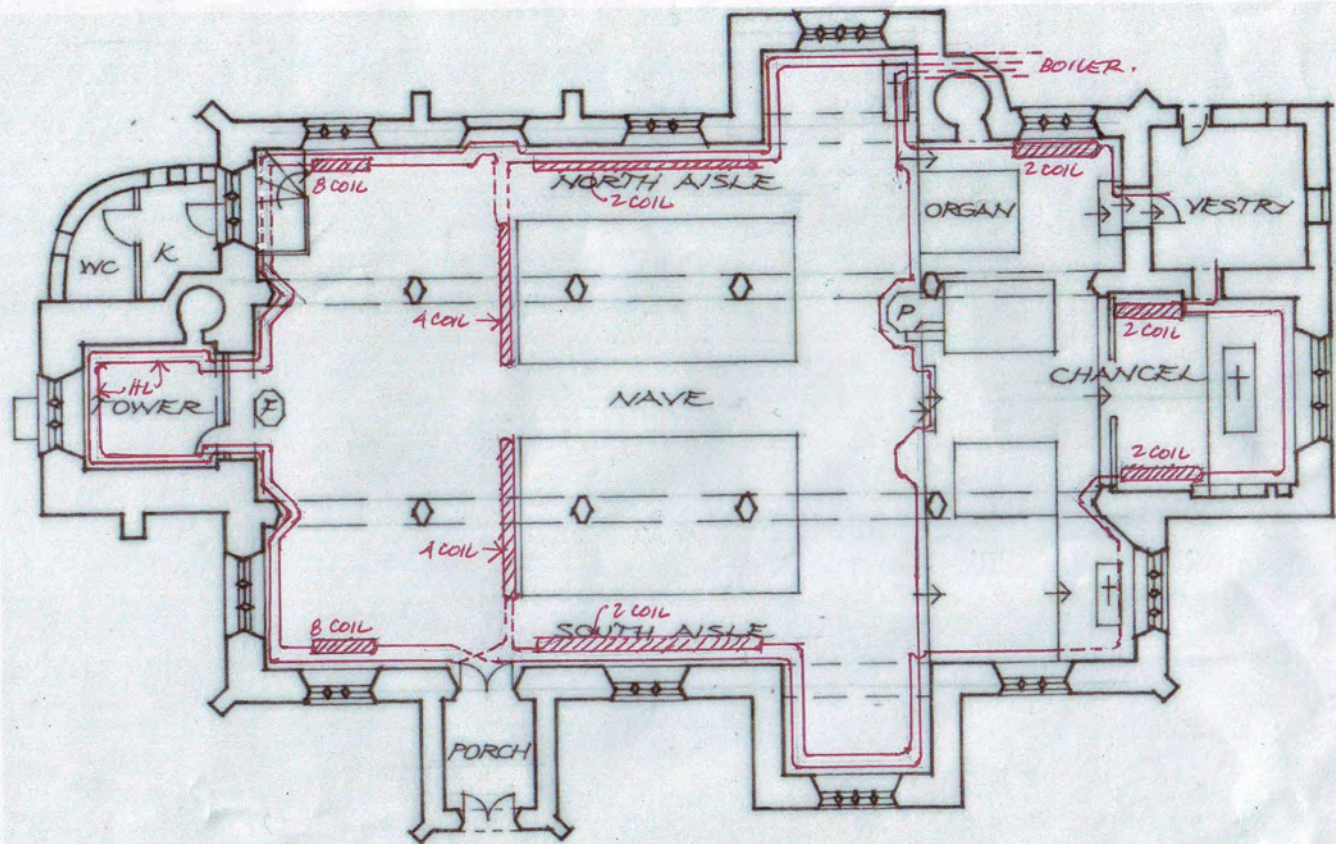












EXISTING HEATING SYSTEM JULY 2012





THE CHURCH
OF ENGLAND

Shrinking the Footprint

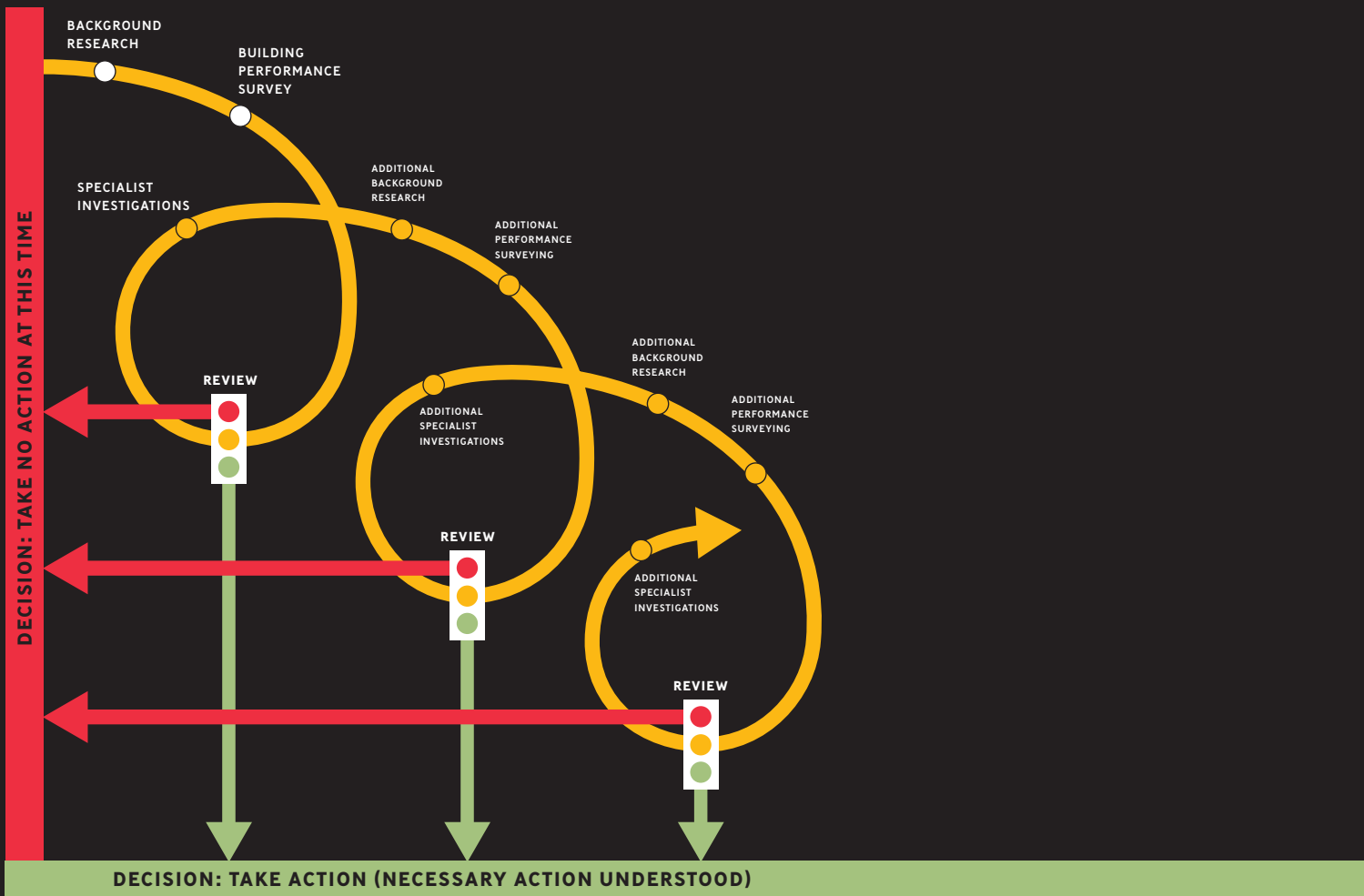


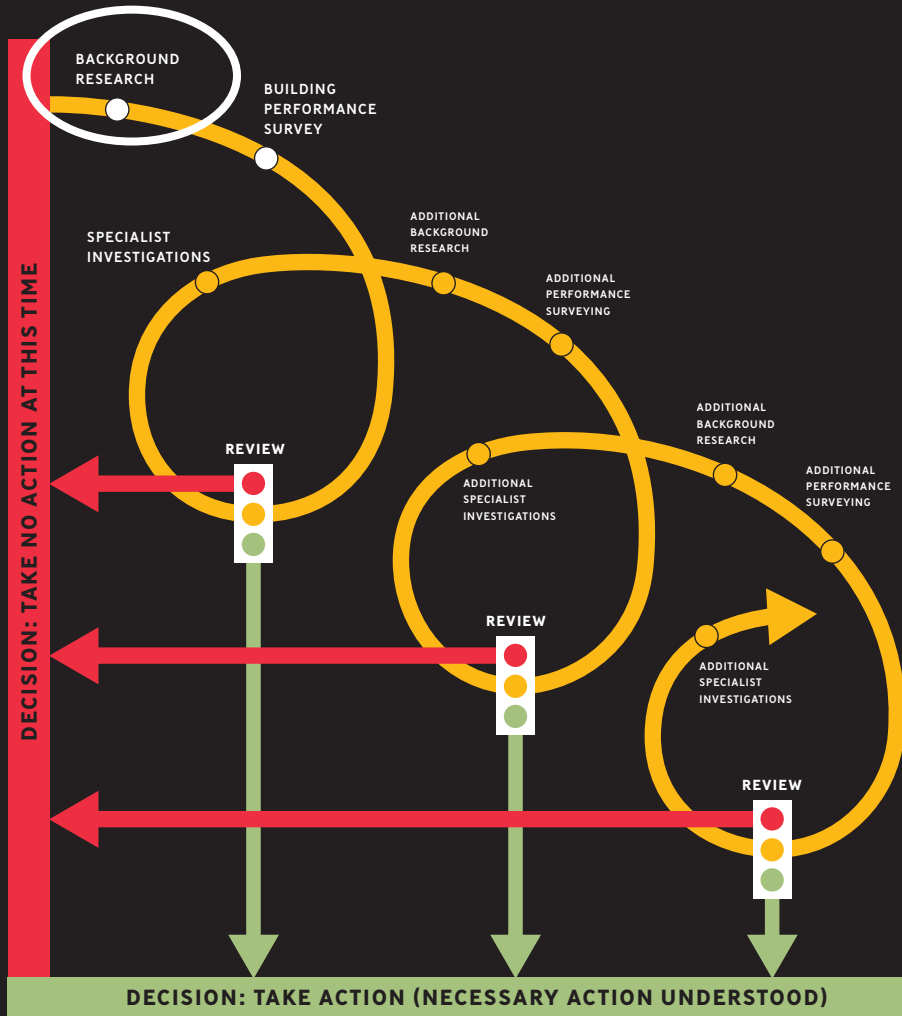


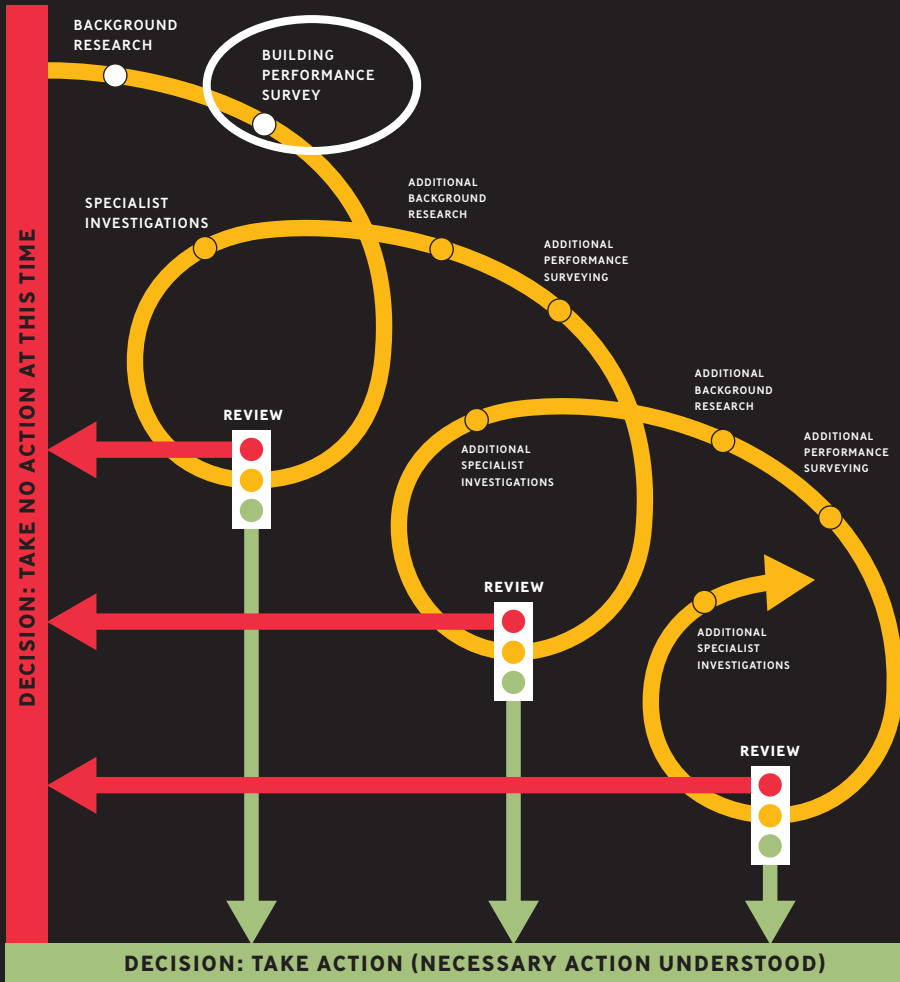


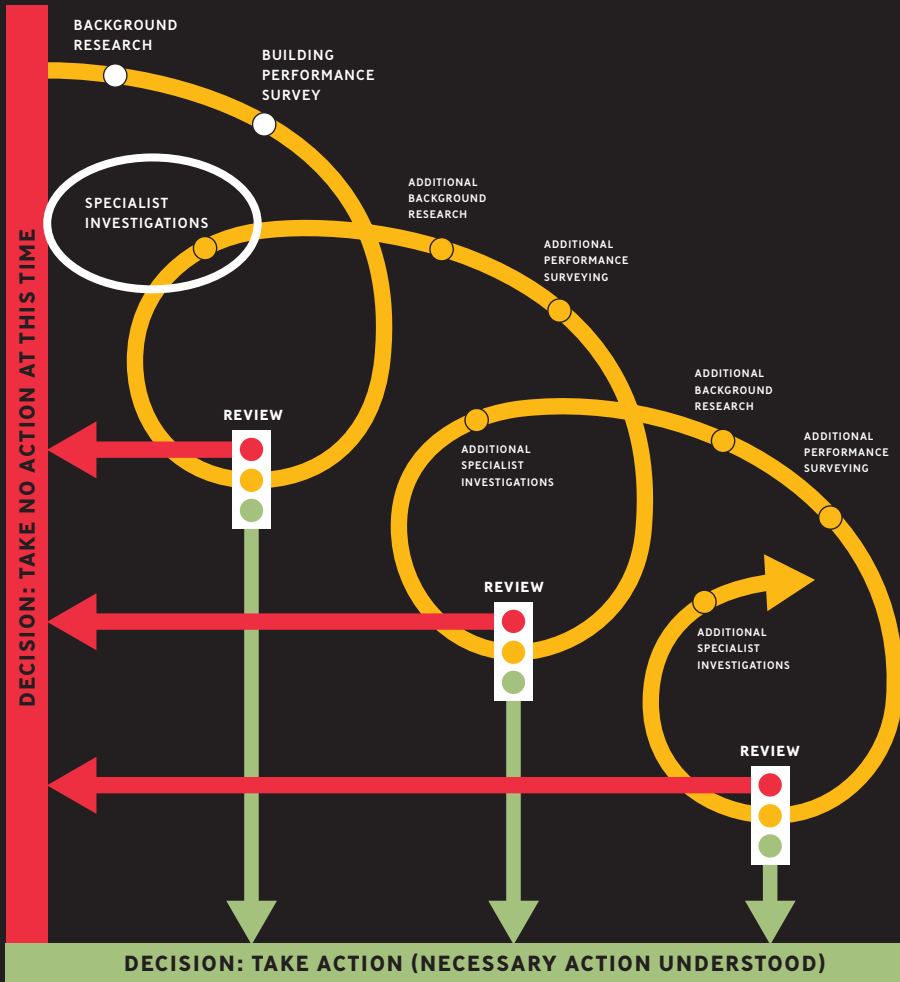


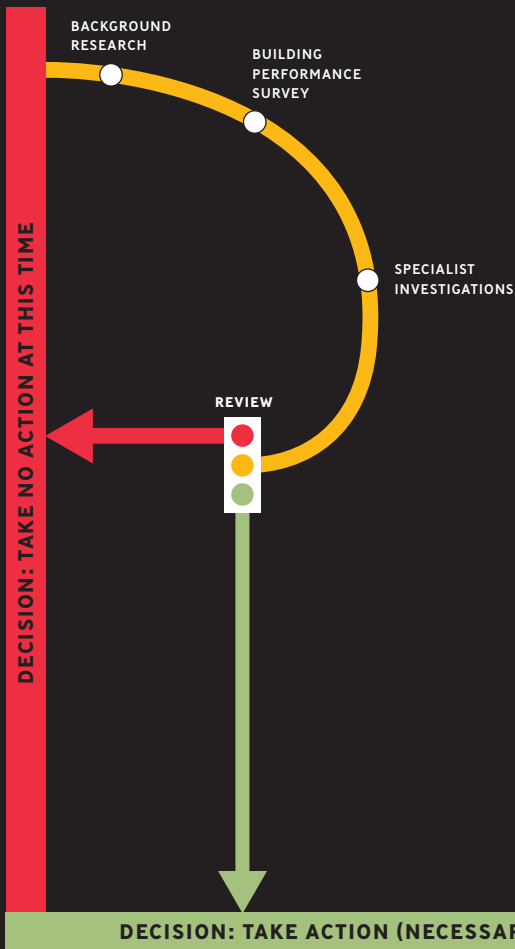












KNOW ENOUGH TO:
TAKE ACTION
OR TO
DECIDE THAT ACTION
IS NOT NEEDED

NEED TO KNOW MORE TO CONFIDENTLY ACT

