



GROWING
THE RURAL
CHURCH

Growing the Rural Church

Marian Carson



pray



grow



serve with joy

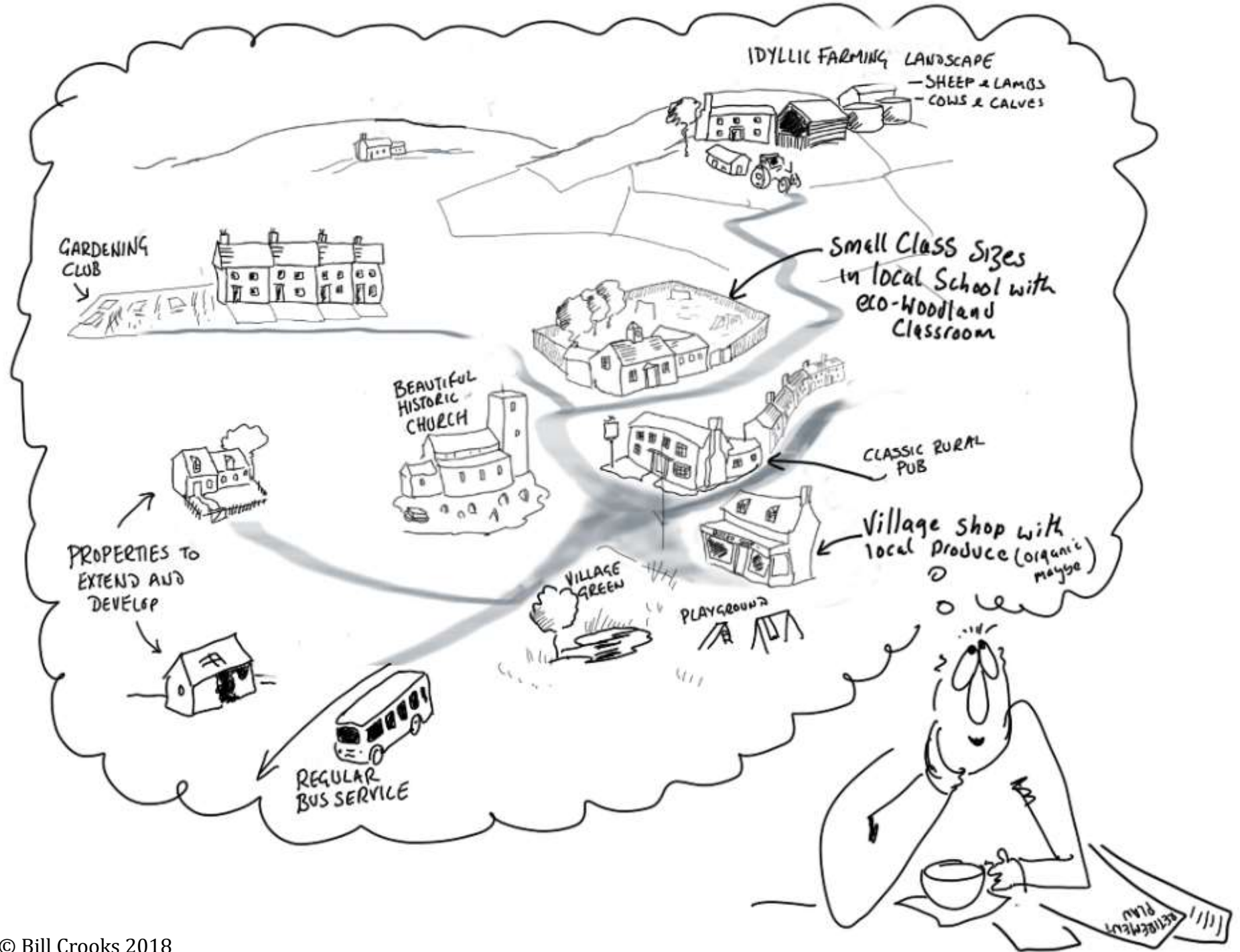
Project Aims

We work with rural mission communities to develop their resources to enable them to grow in prayer, make new disciples and serve the people of Devon with joy.

We aim to:

- Increase the capacity of our rural churches to undertake mission
- Develop sustainable missional, community, commercial or cultural uses for rural church buildings
- Share our learning both locally and nationally





ISOLATED
ELDERLY

DECLINING FARM INCOMES

NEW HOUSING
CREATING TENSION
WITH EXISTING HOUSING

FEW JOB OPPORTUNITIES

YOUNG PEOPLE
MOVING OUT

SCHOOL
STRUGGLING
FOR NUMBERS &
RESOURCES

POOR PUBLIC
TRANSPORT

CHURCH WITH
AGEING
CONGREGATION

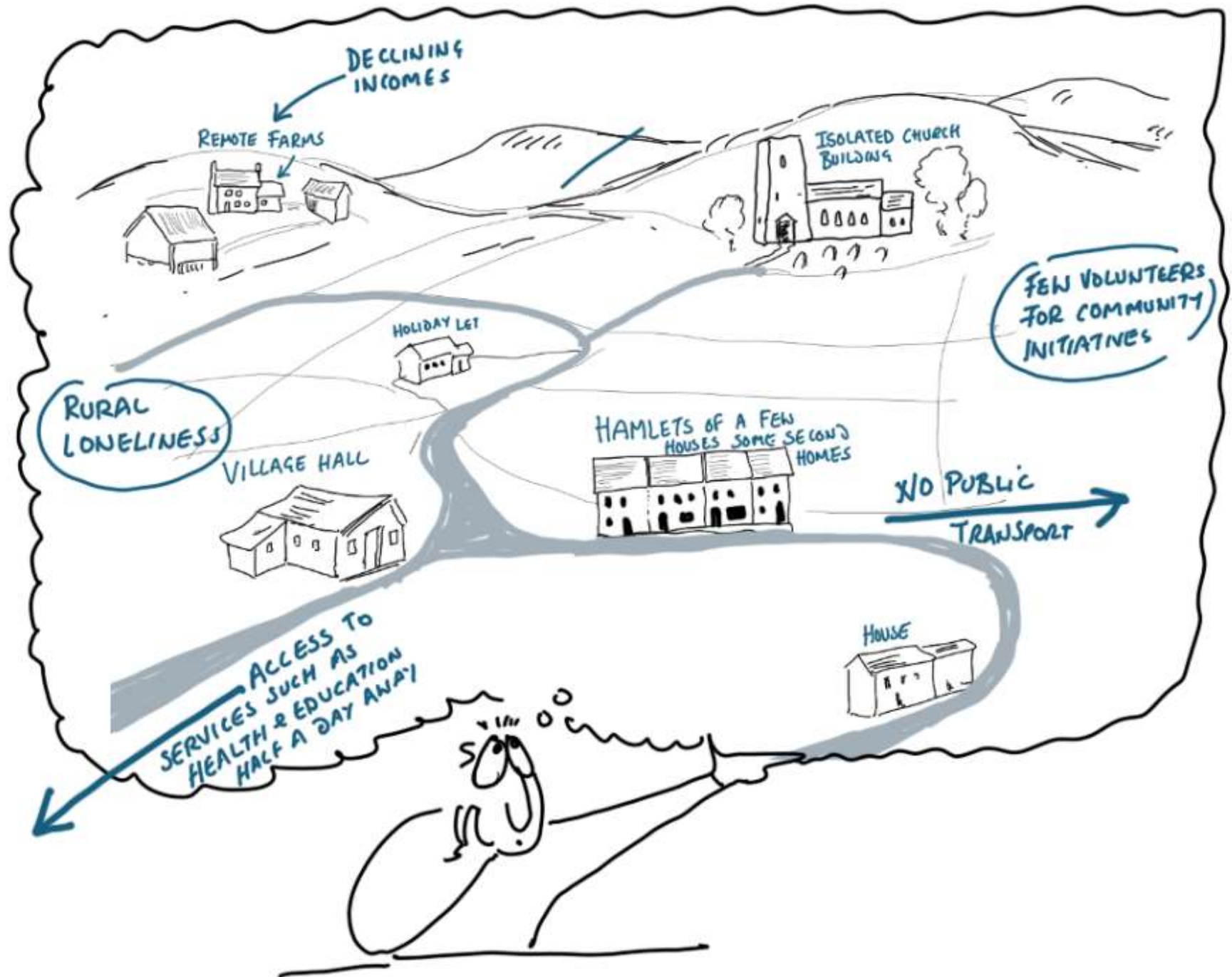
ROOF REPAIRS

PUB CLOSED

STRUGGLING
VILLAGE
SHOP

EXTENDED &
DEVELOPED FOR
SECOND HOMES
OR FOR
EXECUTIVE HOMES
FOR LONG RANGE
COMMUTERS

HORSES



Our Approach



Case Study: St Mary's, Huntshaw

St Mary Magdalene, Huntshaw is part of the Two Rivers Mission Community in north Devon.

June 2017

- PCC of 3 people
- 1 BCP service a month
- Considering closure



June 2019

- Community consultation resulted in a new Friends Group and a monthly all age service
- 25 now attend all age service and traditional service also growing
- Full PCC now in place
- Friends run fundraising activities and a maintenance/restoration programme.
- Successfully applied for £25 000 to repair the roof.

Partnerships: Meshaw and Devon Communities Together

St John the Baptist, Meshaw is a small community in the Little Dart Mission Community.

The Parish Council and PCC have initiated a joint project to look at re-ordering the church as a more flexible community space.

We have partnered with Devon Communities Together to support with this and the project team have just been awarded a £10,000 grant from the Big Lottery Fund to conduct a properly resourced feasibility study.



Partnerships: Churches Conservation Trust



“Walkhampton Church is not just a place where people come to worship every Sunday. There should be no divide between the sacred and the secular. We have to bring the world into our church and the church has to go out into the world.”

- Rev'd Nick Shutt



Strategic Programmes: Pilgrimage



Devon Pilgrim
wander and wonder

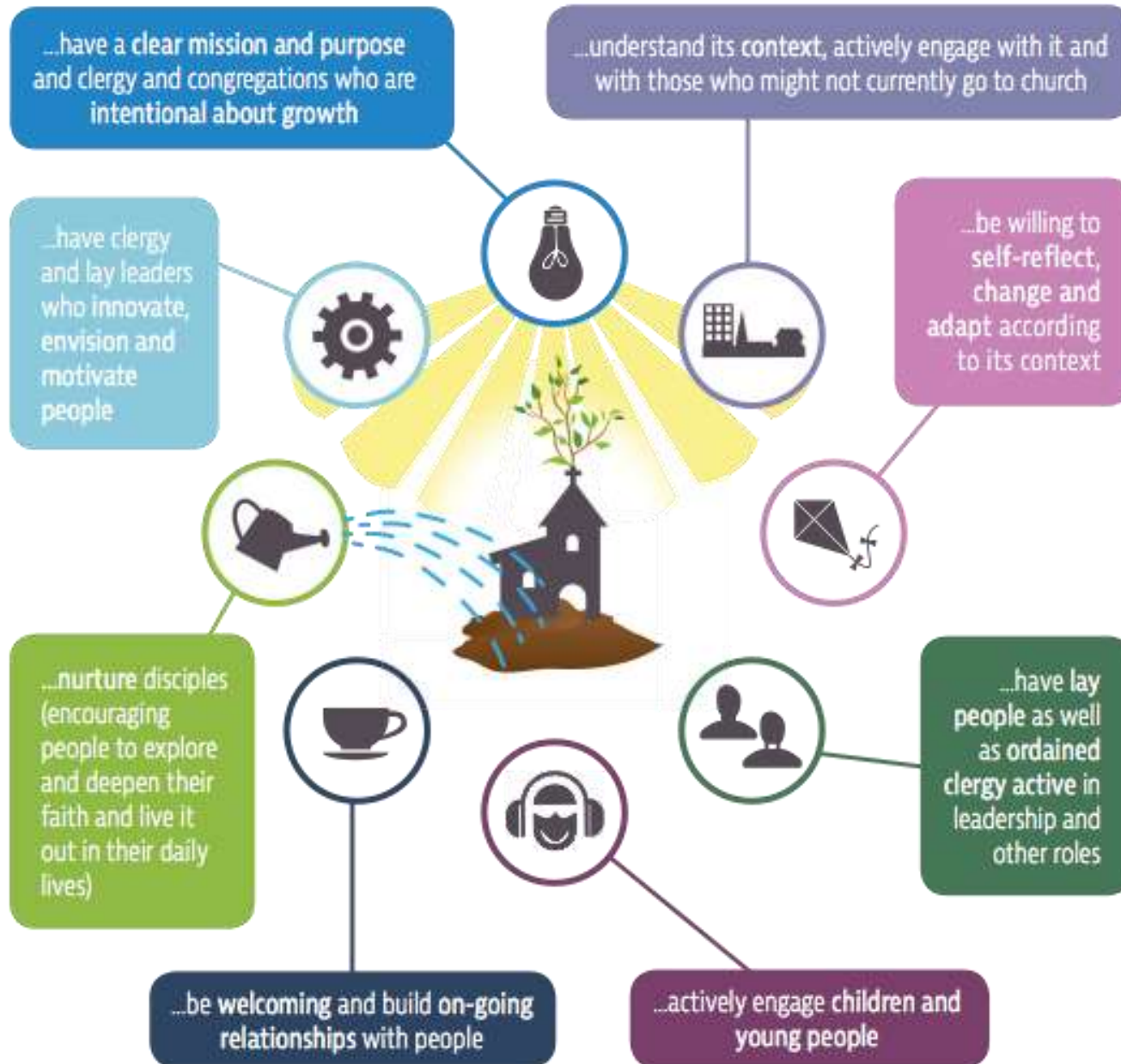
A blurred image of a stained glass window with a 'thank you' card hanging in front of it. The card is light blue with the words 'thank you' in a large, white, sans-serif font. Below the text, there is a small, illegible line of text. The card is attached to a string of colorful, interlocking paper rings. The background is dark, making the colorful window and string stand out.



Strategic Programmes: Festival Churches



Our Learning: Be Intentional



“Meaningful mission and growth are possible in rural multi-church groups, where time and space is created for it to take place and where the ministry of lay people is enabled and equipped.”

- Released for Mission, 2015, p.31

Our Learning: Value Your Assets

“The Church is the only institution that exists primarily for the benefit of those who are not its members.”

- William Temple, Archbishop of Canterbury, 1942-1944

“Get to know your ‘non-members’ and recognise the ways they already belong:

- *through regular activity*
 - *through events*
 - *through people*
 - *through place”*
- Right Rev'd David Walker,
Bishop of Manchester



Our Learning: Building Capacity





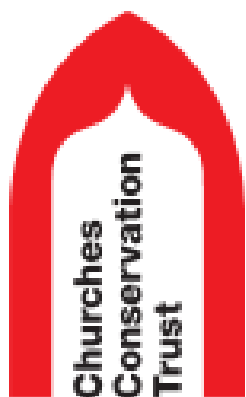
Strategy Map

How we empower and support communities to care for historic places of worship





Sarah Cracknell, Project Manager
sarah.cracknell@exeter.anglican.org
01392 294902



Marian Carson, Director of Operations
mcarson@thecct.org.uk
07393 765 375