

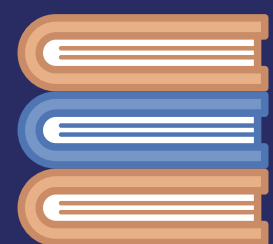


STEP 1

8th March

Education

- Schools and colleges can open for all students
- Practical Higher Education courses



Social Contact

- Exercise and recreation outdoors with household or one other person
- Household only indoors



Business & Activities

- Wraparound care, including sport, for all children



Travel

- Stay at home
- No holidays



Events

- Funerals (30)
- Weddings and wakes (6)



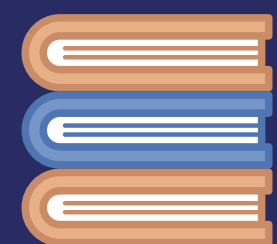


STEP 1

29th March

Education

- As previous step



Social Contact

- Rule of 6 or two households outdoors
- Household only indoors



Business & Activities

- Organised outdoor sport (children and adults)
- Outdoor sport and leisure facilities
- All outdoor children's activities
- Outdoor parent & child group (up to 15 parents)



Travel

- Minimise travel
- No holidays



Events

- Funerals (30)
- Weddings and wakes (6)



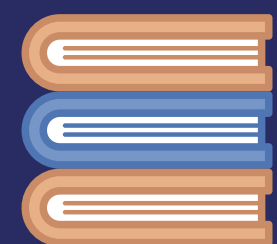


STEP 2

No earlier than April 12th

Education

- As previous step



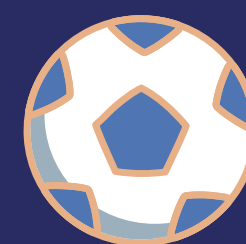
Social Contact

- Rule of 6 or two households outdoors
- Household only indoors



Business & Activities

- All retail
- Personal care
- Libraries & community centres
- Most outdoor attractions
- Indoor leisure inc. gyms (individual use only)
- Self-contained accommodation
- All children's activities
- Outdoor hospitality
- Indoor parent & child groups (up to 15 parents)



Travel

- Domestic overnight stays
- No international holidays



Events

- Funerals (30)
- Weddings, wakes, receptions (15)
- Event pilots



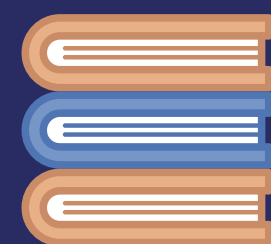


STEP 3

No earlier than May 17th

Education

- As previous step



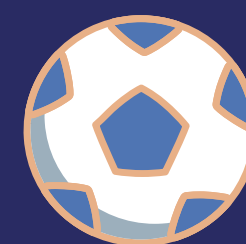
Social Contact

- Maximum 30 people outdoors
- Rule of 6 or two households indoors (subject to review)



Business & Activities

- Indoor hospitality
- Indoor entertainment and attractions
- Organised indoor sport (adult)
- Remaining accommodation
- Remaining outdoor entertainment (including performances)



Travel

- Domestic overnight stays
- International travel (subject to review)



Events

- Most significant life events (30)
- Indoor events: 1,000 or 50%
- Outdoor seated events: 10,000 or 25%



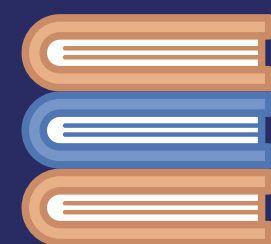


STEP 4

No earlier than June 21st

Education

- As previous step



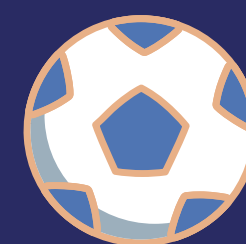
Social Contact

- No legal limit



Business & Activities

- Remaining businesses, including nightclubs



Travel

- Domestic overnight stays
- International travel



Events

- No legal limit on life events
- Larger events

