



UNITED BENEFICE OF DARTMOUTH & DITTISHAM

PARISH PROFILE FOR A PROSPECTIVE TRAINING POST

General Information

Parishes: Parish of Dartmouth and Parish of Dittisham
Mission Community: United Benefice of Dartmouth & Dittisham
Archdeaconry: Totnes

Training Incumbent name:	Rev Dr Andrew Langley
Contact details for incumbent:	The Vicarage 79 Seymour Drive Dartmouth TQ6 9GE
E-mail address (if any):	vicar@dartmouthanddittisham-anglican.org
Date of ordination:	15 Sep 18
Length of time in present parish(es):	July 18
Other responsibilities and duties currently undertaken by incumbent:	
Andrew teaches the Bible module on the FiCM course for SWMTC. He is also a guest lecturer in OT for St. Mellitus SW.	
Previous posts and experience of incumbent, including details of experience with previous curates:	
Andrew served his curacy here before becoming the incumbent.	

NATURE OF POST

This is a training post for a deacon who expects to be ordained priest

THE UNITED BENEFICE OF DARTMOUTH AND DITTISHAM

PROFILE

The United Benefice of Dartmouth and Dittisham was formed in 2008: the Parish of Dartmouth and the Parish of Dittisham. Prior to this the Parish of Dittisham was within a Benefice with the villages of Cornworthy and Ashprington. The Parish has not formed a Mission Community and continues to be known as a United Benefice.

The four churches across the benefice each have their own distinct tradition. Each of these traditions give a breadth and depth to the worshipping life within the Benefice; something to be celebrated. St Petrox as a bastion of the Book of Common Prayer; St Saviour's with a civic-based, liturgy-focussed form of worship; St George's core to village worship and central to village life; along with St Clement's, our Mother Church, developing its mission to be relevant to modern lives. Building upon this sensitivity to different types of worship across the Benefice gives great opportunity for mission.

The United Benefice comes together to worship when there is a fifth Sunday in the month, moving around the Benefice in turn and coming together at other times during the year for specific service such as Holy Week and patronal festivals, for Lent and Advent courses and for social events. The Benefice has a website dartmouthanddittisham-anglican.org which also has links to our social media.

THE PARISH OF DARTMOUTH

Dartmouth is an ancient and picturesque South Devon town and historic seaport at the mouth of the River Dart and is the home of the Britannia Royal Naval College. Part of the town is within a Conservation Area and an Area of Outstanding Natural Beauty with much of it being built on reclaimed land. The town centre boasts some beautiful 14th century buildings and interesting narrow streets, in contrast to the expanding and more recent Dartmouth at the top of the valley.

People generally tend to rely upon cars for transport, although regular bus services run within the town and to Totnes and to Plymouth via Kingsbridge. Access to Torbay is generally via one of the two car ferries across the River Dart to Kingswear, or by the passenger ferry and then by bus. A private steam train company runs seasonal trains aimed mainly at the tourist from Kingswear to Paignton. Bus services run from Paignton and Totnes. There are railway stations at Totnes, 14 miles away and Paignton 9 miles away.

The Dart Riverboat Company, Ribeye Boats, the many trades associated with the river, along with the Britannia Royal Naval College are some of the largest employers in the town and there are two small industrial areas at the top of the town. Employment is mainly in the tourist trade (and therefore largely seasonal) and other than self-employment in skilled trades and employment in local shops and offices, there is little scope for career opportunities. There is an increasing number of people now based in Dartmouth who can primarily 'work from home'.

Dartmouth has two schools, Dartmouth Academy (a run-through school from 4-16 years) and is part of the Kingsbridge Federation of schools, and St John the Baptist Roman Catholic Primary School. Children travel from a variety of other local schools for their education.

Within the town boundary there are several areas of varying economic and social strata. River front properties have been among the most expensive in the country, while at the top of the hill is the largest social housing estate in the South Hams where over half of the resident population reside. Dartmouth has a population of 5,064 (2011 census), with a high percentage [27%] of holiday homes. The table below details the social profile for the parish compared with the diocese as a whole:

		This Parish	Diocese
Child Poverty	% of children in poverty	19%	1-44%
Pensioner Poverty	% of pensioners on low incomes	14%	3-30%
Working Age Poverty	% of adults receiving out-of-work-benefits	10%	3-35%
No Qualifications	% of working adults without any qualifications	24%	8-41%
Social Housing	% of households living in social rented housing	22%	0-65%
Lone Parenthood	Lone parent families as a % of all families with children	26%	3-51%
Ethnic Diversity	% of population who are not white British	6%	1-25%
Older Population	% of population who are aged 65 and over	26%	7-48%

The Parish of Dartmouth has three churches: St Clement's (Parish Church), St Petrox and St Saviour's. The Parish of Dartmouth has a combined [SATB] choir who sing at each of the churches. The award-winning Parish of Dartmouth bell ringing team ring the bells at St Petrox, St Saviour's, and St Clement's.

ST CLEMENT'S



The grade 1 listed church dates from the 10th century and stands at the top of the town looking over the River Dart. It was very successfully re-ordered in 2010. St Clement's is now a very flexible liturgical, meeting and performance space.

It is the Mother Church and the focus for establishing youth ministry; Wake Up On Sunday and Family Communion are held on the first Sunday of the month, along with a Praise and Holy Communion on the third Sunday.

Clements Coffee will soon be open to the public, acting as a contemporary and high-quality café – competing with the very best in town! The church is used by local organisations for practice and performance, although the pandemic had some impact on this recently. There is a church hall adjacent to the church, with huge potential for redevelopment.

ST PETROX

The grade 1 listed church which dates from the 11th century is set at the mouth of the River Dart. It is used weekly during the summer months for Choral Evensong, and fortnightly during the winter months, despite very limited heating and lighting.

St Petrox has a significant wedding ministry owing largely to its attractive location. St Petrox has a ministry to those who value the Book of Common Prayer and traditional worship.

The church is open daily for visitors. We have some bold plans to make better use of the space and improve accessibility and its sustainability.



ST SAVIOUR'S



The grade 1 listed church which dates from the 13th century is situated in the middle of the town. It is the largest of the three churches and is seen as the civic church. The church has a ministry to the town and to the hundreds of visitors who visit the church each week. Sung Eucharist is held on the second and fourth Sundays of the month and there is a well-supported weekday Eucharist on Wednesdays at 10am. St Saviours also houses the well-equipped Benefice Office and acts as a base for the operations team.

St Saviour's underwent a major restoration in 2014 including the cleaning and restoration of the ceiling and High Altar, re-plastering, lighting and sound system, disabled access and glass entrance doors, support to the gallery and formation of a children's area, formation of new priest's sacristy and choir vestry. Further restoration work of the pipe organ is planned.

It is hoped to continue to develop the role of St Saviour's within the life of the town, both formally with special events and informally for visitors and locals who see it as 'their' church; St Saviour's has a tradition of ordered liturgy and music and Sacramental worship.

Opposite St Saviour's is the Southford Schoolrooms Building; while owned by the church fell into disrepair and has since been restored. It now provides purpose-built accommodation for the pre-school (which has met there for over forty years) and two maisonettes for clergy/church use.

SUNDAY WORSHIPPING CYCLE – PARISH OF DARTMOUTH

As we return to normal following the 2020/21 impacts of the pandemic, we have now re-established a regular Sunday worshipping cycle across our three churches, and we feel that our church life is again returning to normal.

- 1st Sunday: Wake-Up-On-Sunday (St C); Praise & Holy Communion (St C); Evensong (St P)
- 2nd Sunday: Sung Eucharist (St S); Evensong (St P) in summer, or Taizé (St C) in winter
- 3rd Sunday: Holy Communion (St C); Evensong (St P)
- 4th Sunday: Sung Eucharist (St S); Evensong (St P) in summer or Café Church (St C) in winter
- 5th Sunday: Benefice Wide Holy Communion (St S, St C or St George's); Evensong (St P)
- Wednesdays: Benefice Eucharist (St S)

Regular Sunday principal service attendance is 40 to 60; Evensong adds an additional ~20.

THE PARISH OF DITTISHAM

The Parish of Dittisham has a population of 440 (Church Urban Fund). It consists of the village of Dittisham itself, with Capton, a small hamlet of approximately 20 houses, about 1.5 miles away on the Dartmouth Road, and there is a cluster of homes in the Bozomzeal/Hole area, there are several farms in the locality. The parish is predominantly rural and lies within an Area of Outstanding Natural Beauty and Conservation Area. There are two public houses one of which houses the post office and shop, a village hall and a café. A local community bus and ferry service supports travel to Dartmouth.

ST GEORGE'S



The grade 1 listed church which dates from the early fourteenth century is situated in the middle of the village. The church is in excellent condition and is beautifully cared for. A re-ordering of the chancel has just been completed moving the stone eastward-facing altar forward so that it can be used for westward celebration of the Eucharist.

There is a fortnightly Holy Communion service at St George's on the second and fourth Sundays of the month, at 9:15am; on the first and third Sundays, there is a lay-led, sung service of the word. On this week the Eucharist is moved to the Tuesday morning. There is a small choir who sing on a There are many holiday homes in Dittisham whose owners come to church when they are in residence, along with those staying in the village. The church is central to the life of the village and has a very special ministry associated with it and to the large number of visitors who visit the church which is open daily.

SUNDAY WORSHIPPING CYCLE – PARISH OF DITTISHAM

The regular Sunday attendance is around [30] with a worshipping cycle throughout the year:

- 1st Sunday: Village Worship
- 2nd Sunday: Holy Communion
- 3rd Sunday: Village Worship
- 4th Sunday: Holy Communion
- 5th Sunday: Benefice Wide Holy Communion (St S, St C or St G)

PEOPLE

Clergy Team, Parish Wardens and Staff:



Rev Dr Andrew Langley
Incumbent



Rev Diana Crook
PtO



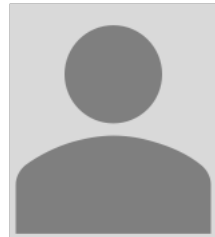
Colin Cooper
Dartmouth Parish Warden



Ernie Wingeatt
Dartmouth Parish Warden



Charlotte Anderson
Dittisham Parish Warden



Peter Smyth
Dittisham Parish Warden



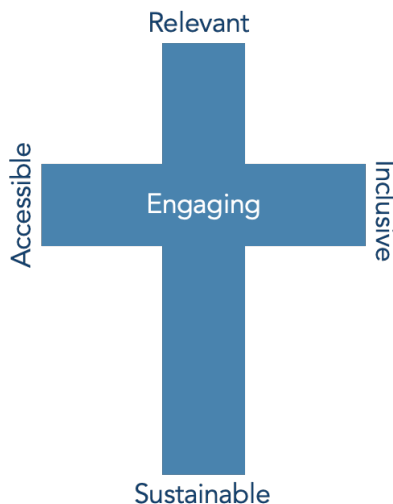
Andy Course
Chief of Staff



Rosie Bead
Office Administrator

VISION FOR MISSION

The vision for mission is to be **relevant** to modern lives, to be **accessible** to all, to be **inclusive**, to be **sustainable**, and to be **engaging**. The breadth of worship that we can offer across the four churches complements our opportunities to be the body of Christ so enabling God through the power of his Spirit to transform lives across our community.



As well as sustaining our current worshipping community, offering all the pastoral care required and maintaining the breadth of worship we have, the following mission objectives are inspiring our current efforts:

- **Relevant:** Build on our early steps to encourage more children, young people, and families to join us and witness to the way that Jesus can transform lives. Reach out to our local community, especially around Townstal by being welcoming and open;
- **Accessible:** Adapting and maximising the use of our church buildings to encourage more people to be introduced to faith in whatever way possible;
- **Inclusive:** Be truly welcoming to all, establish our *Clements* coffee shop within St Clement's church – open to our parishioners, to the wider public and to visitors, and offering a high-quality, comfortable, and welcoming space for all to enjoy;
- **Sustainable:** Looking after God's creation here in Dartmouth and develop plans to be more sustainable across the parish, using natural resources and renewable energies to power our mission in a variety of ways in all three churches;
- **Engaging:** Simplifying and standardising how we operate across the parish while maintaining our focus on opportunities for all to be involved in mission across the whole community.

OUR PRIORITIES

Strategically we recognise the need to improve in all these areas, and we have identified three key priorities to pursue over the coming months/years that focus on R A I S E. Our congregation is small. Our young people attendance is practically zero. Our outreach is currently piecemeal. Realising our Vision for Mission is based around three key priorities: growing a resilient and larger clergy team, establishing focussed Youth Ministry, and improving the accessibility of our churches. These all need sustainable funding streams in the medium term.



Our plans to enable sustainable funding streams are simply to grow – we have considerable untapped potential.

- Increasing the number of young people attending church, would encourage family involvement and grow attendance;
- Widening the age profile will widen our appeal and lead to further growth;
- Widening our appeal and growing numbers will inevitably increase our income streams;
- More income streams will self-fund our Youth Ministry and enlarged clergy team.

This logical progression needs to be kick-started and so we have a series of schemes in place to raise the necessary funding. Our electoral roll currently stands at 106 in Dartmouth and [30] in

Dittisham. Assuming a Youth Minister is in place at the start of 2023, and we focus on the 9-13 age group, we have developed targets for growth, for Dartmouth, over the coming years:

Projected Figures	2022	2023	2024	2025	Notes:
Electoral Roll	106	150	250	400	(1)
Age Group: 0 to 4	1	5	10	15	(2)
Age Group: 5 to 8		5	10	15	(3)
Age Group: 9 to 13		15	25	30	(4)
Age Group: 14 to 17			5	20	(5)
Total Young People:	1	20	50	80	(6)

Notes:

- (1) Assumes two adults per child added to ER as well as other initiatives coming to fruition.
- (2) *Clements Coffee* – our new coffee shop – will bring a dedicated Mothers & Toddlers group into play.
- (3) Younger children, largely siblings from the targeted age range, supported by volunteers.
- (4) Our targeted age range – Youthscape research underpins where to start with our Youth Ministry.
- (5) Ageing engaged young people plus other Youthscape initiatives.
- (6) A total of 70 would represent 10% of the young people in Dartmouth.

We believe the following is possible within a few years.



HOW INCUMBENT UNDERSTANDS THE ROLE OF TRAINING AND A BRIEF DESCRIPTION OF THEIR PROFESSIONAL EXPERIENCE?

The role of a TI is to model a balanced and sustainable vocational lifestyle, while enabling a curate to be formed in a way that equips them to fulfil their priestly potential.

My professional life spans a variety of experiences although in the CofE it involves serving my title in the Benefice and teaching in the diocese.

WHAT IS THE LIKELY ROLE OF THE CURATE IN FUTURE PLANS?

The Curate is likely to be involved in all our future plans. During the training period, we would hope the Curate would want to play an active part in sustaining a growing youth ministry, including outreach to connected families and the wide local community.

AREAS OF RESPONSIBILITY FOR CURATE IN TRAINING:

In the first year the emphasis would be on the role of liturgical deacon. Once priested, there would be ample opportunities to celebrate the Eucharist in a variety of contexts. There would be plenty of opportunities to lead funerals, weddings, and baptisms. Working closely with the clergy team and ordinand, the curate would have a specific responsibility to lead our Wake Up on Sunday service, as well as being involved with the youth ministry and our home group plans.

ACCOMMODATION

The Curate's house is at 22 Church Road, near St Clement's and is owned by the Diocese. It is a medium-sized semi-detached house that was occupied by the previous Curate and family. It has four bedrooms, two bathrooms and two reception rooms and a garden.

ANYTHING ELSE?

Any additional information the incumbent feels it is important to give at this stage:

I know from personal experience that this is a really good training context!

CONTACT FOR MORE INFORMATION:

Email: john.fisher@exeter.anglican.org

Director of Ordinands
Revd John Fisher
The Old Deanery
The Cloisters
Exeter EX1 1HS
Tel: 01392-477702