



# CONSERVATION GRANTS REPORT 2022

Issued by the Cathedral & Church Buildings Division  
Church House, Great Smith Street, London SW1P 3AZ

Copyright © Church Commissioners 2023

Corrections or queries should be brought to the attention of  
John Webster or Tracy Manning, email:  
[churchcare@churchofengland.org](mailto:churchcare@churchofengland.org)

All images © Church Commissioners unless otherwise stated.

Details of our grants can also be found on the [360 Giving](#) website.





# CONSERVATION GRANTS REPORT 2022



**Front cover: Colchester, St James the Great**

A £6,000 grant was awarded for the conservation of the *Adoration of the Shepherds* (1778), an oil on canvas by George Carter.

*Image courtesy of Matthew Saunders*

# CONTENTS

INTRODUCTION	<b>5</b>
DIVISIONAL HIGHLIGHTS	<b>6</b>
OUR FUNDERS	<b>10</b>
GRANTS FOR CONSERVATION	<b>12</b>
Bells	12
Books and manuscripts	13
Clocks	14
Churchyard structures	15
Monuments	16
Organs	20
Paintings	22
Stained Glass	24
Textiles	26
Wall Paintings	27
Wooden objects	29
Conservation reports	30
OUR COMMITTEES	<b>36</b>
KEY CONTACTS	<b>37</b>



# INTRODUCTION

ChurchCare, the Cathedral and Church Buildings Division of the National Church Institutions of the Church of England, is a national resource offering comprehensive information, advice and conservation support to 16,000 Anglican parish churches and 42 Anglican cathedrals in England. We work with government, Historic England and the wider heritage sector to develop policy, leverage funding and sustain the crafts and heritage skills needed to conserve our nation's remarkable historic church buildings and their interiors.

Parish churches are rich in fittings and objects of historical, artistic, and social significance. Although faithfully cared for by a host of volunteers, most of these will require professional intervention at some stage. Through our guidance and grants, we help parishes deliver high-quality conservation projects. From initiation to completion, we support as many parishes as possible. Our grants scheme for conservation reports helps parishes get off to a good start, and our conservation guidance ensures that conservation work is carried out to the highest standards. On average 80% of grant applications are successful and over 90% of funded projects are completed.

We are especially grateful to the Pilgrim Trust and Radcliffe Trust for their ongoing financial support. With the help of these respected funders, we were able to fund 103 conservation projects across 30 of the 42 dioceses in England. Images of these fascinating church objects can be found throughout the report, from the 13th-century mermen font at Anstey, Hertfordshire to the 20th-century Henry Strachey murals at Stowey, Somerset. This year we have also shone a light on works of art by women church artists, ever committed to the importance of celebrating the many hands, minds and voices that have contributed to our rich legacy of church architecture.

We are pleased to be able to support heritage craft skills in the United Kingdom and thank all the conservation professionals involved in these projects. We would also like to thank all the parish volunteers for their enthusiasm and dedication. Without them, many of the projects would not have flourished.

Emily Gee  
Director for Cathedrals and Church Buildings  
Church Commissioners for England

# DIVISIONAL HIGHLIGHTS 2022

## Buildings for Mission

We successfully secured funding for the triennium (2023-25) from the Church Commissioners to support dioceses and parishes with the management of church buildings and associated land. The overall aim is to remove burdens from hard-pressed congregations and governance bodies by managing many of the more onerous technical responsibilities on their behalf, or facilitating them to do so.

A total budget of £11 million has been allocated. The funding is roughly divided into two mutually supportive workstreams:

- **Digital provision and training:** the overall aim is to provide one system for many aspects of managing buildings and sites.
- **Support for churches:** the bulk of the funding, providing minor repair grants to dioceses and at least 25 new Church Buildings Support staff to complement existing staff employed by dioceses and other organisations. This includes using Church Buildings Management Partnerships, a delivery mechanism that was developed in 2022.

## Net-Zero Carbon and the Environment

During 2022, we have continued to deliver on our **net zero carbon programme**. All parts of the Church of England recognise the climate emergency and the necessity of a strong, visible Christian response to what is happening to our world. As a key step towards this, all 42 dioceses have now registered as [Eco Dioceses](#).

At the February 2022 General Synod amendments to the Faculty Jurisdiction Rules were approved that removed some regulatory hurdles for proposals reducing the carbon footprint of a church and require a strong case to be made for proposals that continue or increase reliance on fossil fuels for heating. These came into force on 1 July 2022.

The Routemap to Net Zero Carbon by 2030 was agreed by General Synod in July 2022 and is the action plan to deliver net zero carbon this decade. It contains milestones and actions for all parts of the Church.

The Church Commissioners have committed an anticipated £190million of funding over the next 9 years towards this action plan, with £30m for 2023-2025. Work began in 2022 to plan and prepare for the best use of this funding.

We launched our new range of case studies, issued new guidance, offered [training and webinars](#), ran two conferences (one for Diocesan Environment Officers and one, in partnership with Fit for the Future and Historic England, on the Future of Heat) and increased our own capacity through creating the Net Zero Carbon and Building Services committee of the Church Buildings Council.

We also focussed on biodiversity, in particular through the Churches Count on Nature project. CCoN is part of Love Your Burial Ground Week, and focusses on the brilliant wildlife to be found in churchyards and chapel yards. It is a joint initiative promoted by Caring for God's Acre, the Church of England, the Church in Wales and A Rocha UK. Over its first two years, over 27,000 wildlife records have been submitted, using iNaturalist UK. Many of the records have now been verified and are available to view on <https://burialgrounds.nbnatlas.org>.

During 2022/3, we developed new guidance and ran webinars on **climate resilience**, publishing a number of case studies of churches affected by flooding, hotter summers, and wild fires.





**Solar panels at Waterloo Road, St John the Evangelist (Diocese of Southwark)**

## **Contested Heritage**

In 2022 we continued to provide advice to parishes, dioceses and Chancellors regarding contested heritage cases. In January, we presented our work on contested heritage to the Archbishops' Commission on Racial Justice. We are grateful for the serious attention the Commission gave in its [First Biannual Report](#) and [Second Biannual Report](#) to consideration of the impact of memorials in our churches and cathedrals to known traders in enslaved people and those who were otherwise a party to their brutal exploitation.

A Contested Heritage Committee was established by the Church Buildings Council in July 2022 to bring a broader understanding of the issues, and to provide advice on policy, guidance and cases for the Church Buildings Council and Cathedrals Fabric Commission for England.

A review of the published national contested heritage guidance was begun, with a focus on the theology underpinning the guidance and learning from its use in cases at Jesus College Chapel, Cambridge (Diocese of Ely) and Dorchester, St Peter, Holy Trinity & All Saints (Diocese of Salisbury) and elsewhere.

## **The National Burial Grounds Survey**

The project to map each of the Church of England's 12,500 churchyards is now well underway, with surveying completed in the Dioceses of Carlisle and Truro and progressing in Exeter, Salisbury and Oxford. This project using laser scanning technology will result in a free-to-access map of graves being available online over a 7-year period. The [pilot studies](#) can be found on our website.

## Bats in Churches

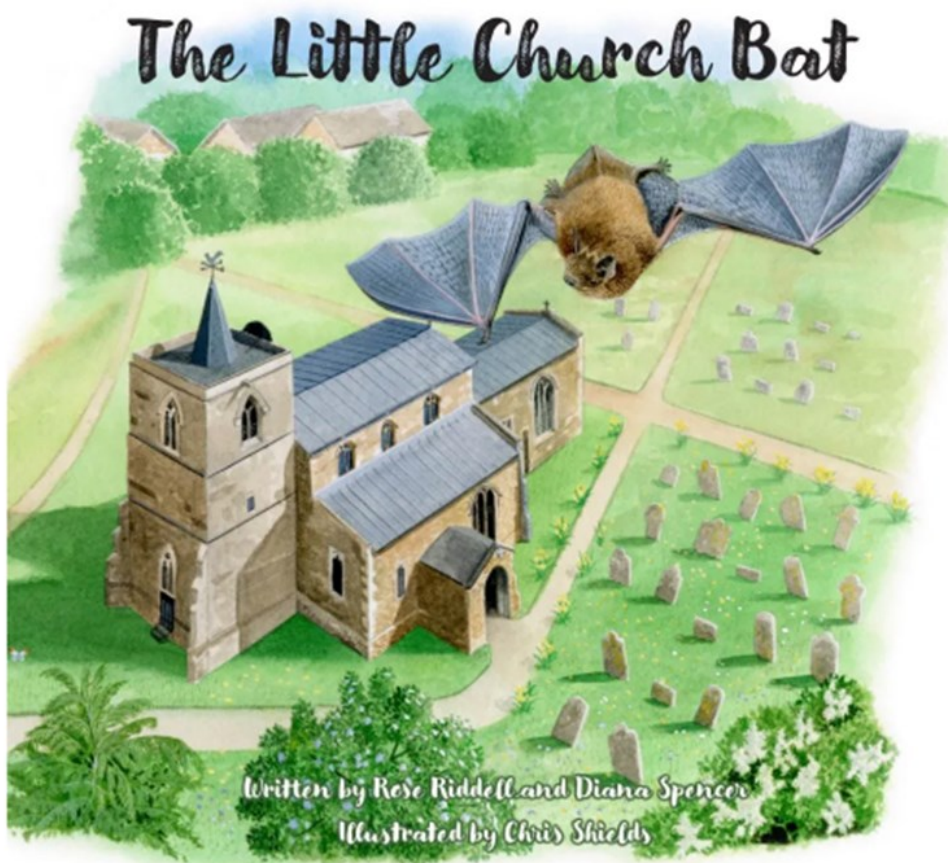
The penultimate year of the five-year **Bats in Churches** project contained many highlights. Notably, two major building projects were successfully completed:

At St Moran, Lamorran (Truro), not only were the Brown Long-eared bats successfully excluded from the interior by the creation of two spacious transept voids, but the furniture was cleaned and conserved. In 2019, the church was unofficially closed – in 2023, it will re-open for services.

At St George's, West Grinstead (Chichester), a large void was created to house a Natterer's bat maternity roost by re-instating the ceiling – a major and successful intervention in a Grade-I building.

In a first for the project, sails, a low cost and intervention mitigation, were installed at St Mary Magdalene, Brampton (Ely) to protect the interior from droppings from a roost in the chancel arch. The sails can be lowered to ground level and cleaned periodically. Churches across the project welcomed over 2000 participants to bat or heritage events.

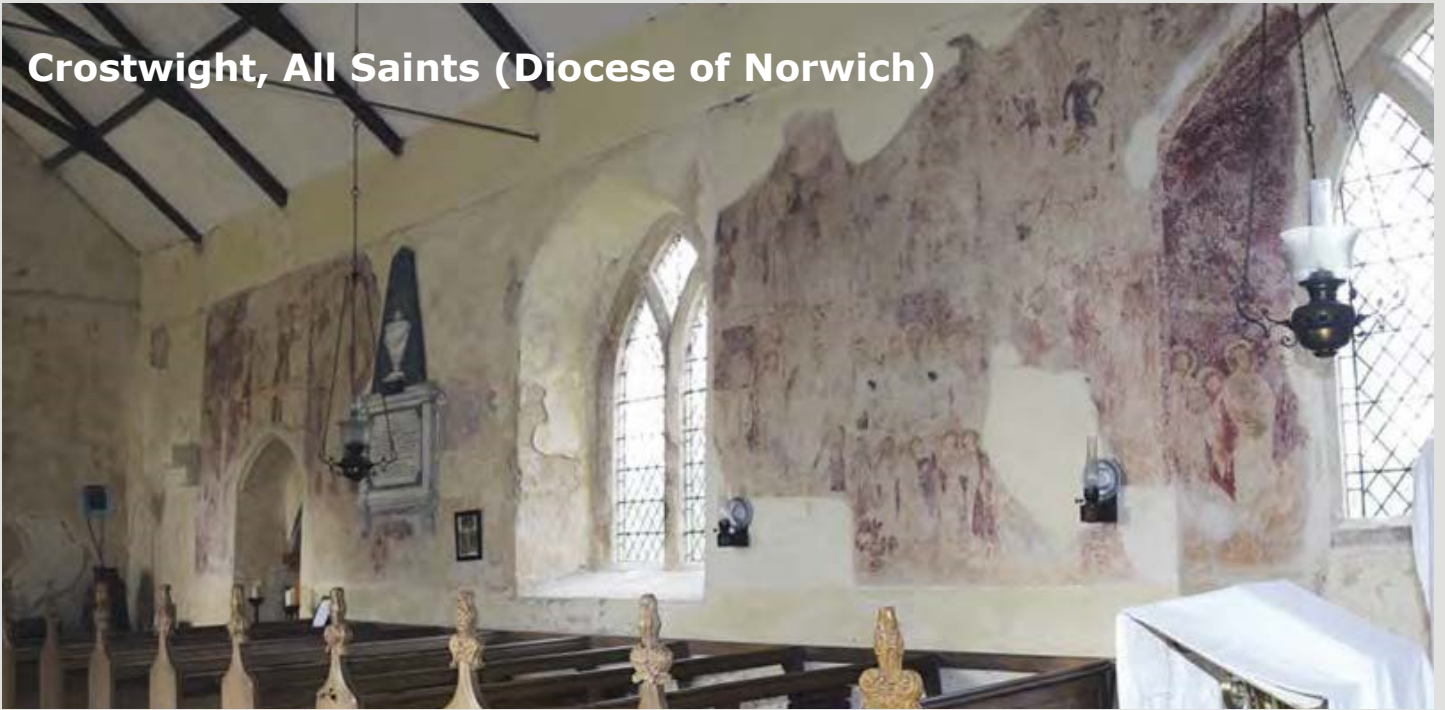
The Bats in Churches Study is now complete and we have data from 727 churches, which exceeded our expectations. Well supported by excellent press coverage, the results are being analysed during winter 2022/3. Finally, in September 2022, Songs of Praise highlighted the bat mitigation work at [Radstone church](#) which led to its re-opening.



'The Little Church Bat', a book for children, was created by members of the project. Copies are sold in churches, cathedrals and at church events. The proceeds go to churches. The project commissioned Ilene Sterns, an artist photographer, also a dedicated bat volunteer, to create an art installation to celebrate bats in churches. Created for Compton Martin church, the artwork, On A Wing and A Prayer, is touring nine churches over the next year.



## Crosthight, All Saints (Diocese of Norwich)



The tiny isolated 13th-century church of Crosthight, located at the end of a grass track and without mains facilities, contains exceptional medieval wall paintings remarkable for their extent and iconographical significance. The 14th-century scheme includes a Passion cycle – with subjects such as the Entry into Jerusalem, the Washing of the Disciples' Feet, the Last Supper, the Agony in the Garden, the Appearance before Pilate, a Crowning with Thorns, a Crucifixion, the Entombment, and the Ascension – and other popular medieval subjects such as The Seven Deadly Sins, a Warning to Gossips, a St Christopher, and the remains of fictive wall hangings at dado level.



The paintings and the building were in a perilous state when the building was placed on the Heritage at Risk Register in 2018. Since then, an extended campaign of building repairs have begun, spurred by a Covid Recovery Grant from Historic England, as well as a grant from the Headley Trust, in 2019.

In 2021, Crosthight was awarded a Churchcare grant of £5,000 towards the conservation of the wall paintings on the north wall. An unstable wall monument (seen above) was also conserved. This phase of the work was completed in late 2022, and the parish continue to work hard to preserve and maintain this unique church.

## OUR FUNDERS

The 2022 grants programmes for Conservation and Conservation Reports were funded by donations from The Pilgrim Trust, The Radcliffe Trust, the Anglican Parish Churches Fund, The Oswald Allen Fund, The Gunnis Fund and the Founder's Fund.

### Funding partner

The Pilgrim Trust	£212,232
The Radcliffe Trust	£20,000
The Anglican Parish Churches Fund	£10,000
The Gunnis Fund	£1,250
The Oswald Allen Fund	£44,643
Founders' Fund	£2,500

**The Pilgrim Trust** was founded by Edward Stephen Harkness in 1930 with an endowment of just over £2 million. Inspired by the role Great Britain played in the First World War, Harkness wished the funds to be used for some of the UK's 'more urgent needs'. Such a brief would be unusual today but over the years it has given the Trustees the flexibility to fund charities that address such 'urgent needs' or the UK's future wellbeing. Currently the Pilgrim Trust has two grant-making programmes that focus on preserving the UK's heritage and catalysing social change through which it awards grants of circa £3 million a year.

**The Radcliffe Trust** is one of Britain's oldest charities, founded in 1714 by the will of Dr John Radcliffe. The Radcliffe Trust continues his charitable bequest through the support of music, and heritage and crafts.

The **Anglican Parish Churches Fund** was established in 2012 and supports the conservation, repair and enhancement of church buildings of the Church of England, the contents of such church buildings and their churchyards.

The **Gunnis Fund** supports the preservation of monuments and tombs and tablets erected between 1660 and 1860 in English cathedrals and parish churches.

The **Oswald Allen Fund** supports the conservation of books in parochial libraries of the Church of England.

The **Founders' Fund** derives is made up of money given to the Council for the purpose of supporting conservation work in parish churches. It was formed by consolidating various named funds, that included one from our founder, FC Elles.

Without the generous support of our funding partners we would not be able to help the thousands of volunteers that look after some of England's most treasured heritage, found in our parish churches.

To find out more on how you can partner with ChurchCare to support the conservation of church heritage please contact Janet Berry ([janet.berry@churchofengland.org](mailto:janet.berry@churchofengland.org) 0207 898 1889).

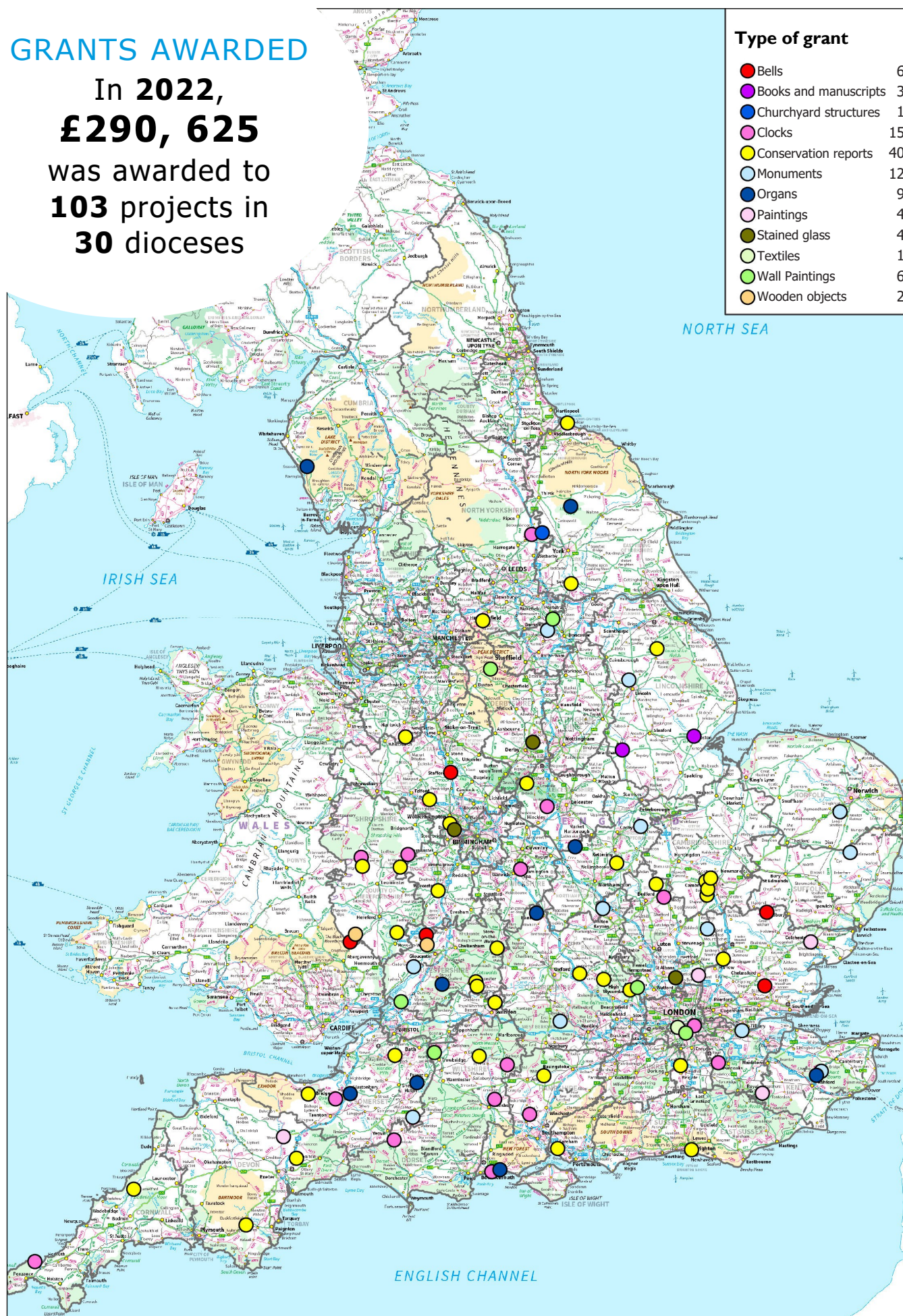
Pilgrim  
Trust





# GRANTS AWARDED

In 2022,  
**£290, 625**  
was awarded to  
**103** projects in  
**30** dioceses



Crown copyright and database rights 2023. Ordnance Survey Licence number 100040148.



# GRANTS FOR CONSERVATION

## Grants for the conservation of bells

### *Grants from the Pilgrim Trust*

<b>Ashen, St Augustine of Canterbury</b> Conservation of three listed bells <sup>†</sup> (Treble: Thomas de Lynn, c1330 <sup>†</sup> ; Second: Thomas de Lynn c1330 <sup>†</sup> ; Tenor: William Chamberlain, c1440 <sup>†</sup> ) and listed bell frame c1599 <sup>†</sup>	(Diocese of Chelmsford)	£2,000
<b>Stafford, St Mary</b> Conservation of three bells (Fifth: Henry II Bagley, 1692; Sixth: Henry II Bagley, 1692; Eighth: Henry II Bagley, 1692)	(Diocese of Lichfield)	£2,500
<b>Staunton, St James</b> Conservation of two bells (Second: Abraham I Rudhall, 1695; Third: Abraham I Rudhall, 1695)	(Diocese of Gloucester)	£6,000
<b>Walterstone, St Mary</b> Conservation of two bells, one listed <sup>†</sup> (First: Evan II & William Evans, 1725; Sanctus: founder unidentified, c1599 <sup>†</sup> )	(Diocese of Hereford)	£2,500

### *Grants from the Anglican Parish Churches Fund*

<b>Hartpury, St Mary the Virgin</b> Conservation of four listed bells (Third: John I Pennington, 1626 <sup>†</sup> ; Fourth: Henry Jeffries, c1550 <sup>†</sup> ; Fifth: John I Pennington, 1626 <sup>†</sup> ; Tenor: John I Pennington, 1628 <sup>†</sup> )	(Diocese of Gloucester)	£4,000
<b>West Hanningfield</b> Conservation of listed bell frame, c1600 <sup>†</sup>	(Diocese of Chelmsford)	£1,000

<b>Total</b>		<b>£18,000</b>
--------------	--	----------------



#### **Ashen, St Augustine of Canterbury (Diocese of Chelmsford)**

The three pre-Reformation bells and the oak bell frame are all listed for preservation. The bells are in the minor scale and have not been retuned (the major scale was adopted after the Reformation). They all retain their original canons (supporting loops) and the original medieval clappers have been preserved. They have been hung for full-circle ringing (developed in England during the early 17th century).

*Image courtesy of Matthew Higby & Company Ltd*

# Grants for the conservation of books and manuscripts

Grants from the Oswald Allen Trust		
<b>Boston, St Botolph</b> Conservation of 17th-century parochial library	(Diocese of Lincoln)	£20,000
<b>Grantham, St Wulfram</b> Conservation and display of two volumes of Conrad Gesner's <i>Historia Animalium</i> , 1587	(Diocese of Lincoln)	£15,000
<b>Tiverton, St Peter</b> Conservation of the Newte Library, bequeathed 1716	(Diocese of Exeter)	£9,643
<b>Total</b>		<b>£44,643</b>



**Grantham, St Wulfram (Diocese of Lincoln)**  
£15,000 was awarded from the Oswald Allen Trust for the conservation of the Triggs Library at Grantham, St Wulfram, which included the conservation and display of two volumes of Conrad Gesner's *Historia Animalium* (1587, inset), the first printed catalogue of living creatures. *Images courtesy of John Manterfield (main image) and Bridget Warrington ACR (inset).*



## Grants for the conservation of clocks

### *Grants from the Pilgrim Trust*

<b>Blunham, St Edmunds or St James</b> Conservation of clock by unknown maker, 1650-1725	(Diocese of St Albans)	£2,500
<b>Camberwell, St Giles</b> Conservation of clock by E.J. Dent of London, 1844	(Diocese of Southwark)	£3,000
<b>Christchurch, Holy Trinity</b> Conservation of clock by John Moore & Sons, 1838	(Diocese of Winchester)	£1,000
<b>Cleobury Mortimer, St Mary</b> Conservation of clock by George Donisthorpe of Birmingham, 1772	(Diocese of Hereford)	£2,500
<b>Collingbourne Ducis, St Andrew</b> Conservation of clock by Smith & Sons of London, 1871	(Diocese of Salisbury)	£1,000
<b>Desford, St Martin</b> Conservation of clock of clock by unknown maker, 1630-1640	(Diocese of Leicester)	£2,500
<b>Goathurst, St Edward, King and Martyr</b> Conservation of clock by John Hunt of Bridgwater, 1734	(Bath and Wells)	£1,500
<b>Leintwardine, St Mary Magdalene</b> Conservation of clock by Leeson of Coleshill, Birmingham, 1884	(Diocese of Hereford)	£1,500
<b>Winterbourne Earls, St Michael and All Angels</b> Conservation of clock by Weule of Bockenheim, Germany, 1904	(Diocese of Salisbury)	£1,500
<b>Yetminster, St Andrew</b> Conservation of clock by Bartholomew of Sherborne, 1682 and Carillon, 1887	(Diocese of Salisbury)	£3,000

### *Grants from the Anglican Parish Churches Fund*

<b>Arkendale, St Bartholomew</b> Conservation of clock by John Smith of Derby, c.1900	(Diocese of Leeds)	£1,000
<b>Braishfield, All Saints</b> Conservation of clock by Thwaites & Reed of London, 1902	(Diocese of Winchester)	£1,500
<b>Brasted, St Martin</b> Conservation of clock by Yabsley of Ludgate Hill, London, 1913	(Diocese of Rochester)	£1,000
<b>Lillington, St Mary Magdalene</b> Conservation of clock by W. Potts & Sons of Leeds, 1897	(Diocese of Coventry)	£500
<b>St Ives, St Ia the Virgin</b> Conservation of clock by J.B. Joyce & Co, 1933	(Diocese of Truro)	£1,000

---

<b>Total</b>		<b>£25,000</b>
--------------	--	----------------



# Grants for the conservation of churchyard structures

Grants from the Pilgrim Trust		
Great Ouseburn, St Mary the Virgin	(Diocese of Leeds)	£9,000
Conservation of Grade-II listed boundary wall		
Total		£9,000



## Camberwell, St Giles (Diocese of Southwark)

A £3,000 grant was recommended for the conservation of the E.J Dent clock at Camberwell, St Giles. Although less well-known than the Dent clock at the Palace of Westminster, this is the earliest remaining example of a Dent turret clock.

*Images courtesy of The Cumbria Clock Company*





**Top left: Wingfield, St Andrew (Diocese of St Edmundsbury and Ipswich)**

A £9,914 grant was awarded for the conservation of the Monument to Michael de la Pole (d.1415) and his wife Katherine, of timber, Purbeck marble and brass, and the alabaster monument to John de la Pole (d.1491) and his wife Elizabeth of York.

*Image courtesy of Skillington Workshop Ltd*

**Top right: South Carlton, St John the Baptist (Diocese of Peterborough)**

A £6,000 grant was awarded for the tomb of Sir John and Lady Monson, by Nicholas Stone, 1625. *Image courtesy of Skillington Workshop Ltd*

**Bottom left: Southwick, St Mary the Virgin (Peterborough)**

A £3,000 grant was awarded for the conservation of the monument to George Lynn (d.1758) by Louis Francois Roubiliac.

*Image courtesy of Skillington Workshop Ltd*

**Bottom right: Godmersham, St Lawrence the Martyr (Canterbury)**

A £4,000 grant was awarded for the conservation of the 12th century bas-relief Purbeck slab depicting a seated archbishop, possibly Thomas a Becket. *Image courtesy of McNeilage Conservation*

## Grants for the conservation of monuments

### *Grants from the Pilgrim Trust*

<b>Anstey, St George</b> Conservation of font, c.1200	(Diocese of St Albans)	£1,000
<b>Arlingham, St Mary the Virgin</b> Conservation of three wall monuments to: John Yate, 1758; Charles Yate, 1738; and Revd Thomas Hodges, 1784	(Diocese of Gloucester)	£2,750
<b>Godmersham, St Lawrence the Martyr</b> Conservation of 12th-century bas-relief Purbeck marble slab depicting a seated archbishop, possibly Thomas a Becket	(Diocese of Canterbury)	£2,000
<b>Hethel, All Saints</b> Conservation of ledger slab dedicated to William Branthwayte (d.1710) and his wife Julian (d.1727)	(Diocese of Norwich)	£1,000
<b>Hickleton, St Wilfrid</b> Conservation of painted reredos and organ case by Bodley & Garner, 1886-88	(Diocese of Sheffield)	£2,500
<b>Horsington, St John the Baptist</b> Conservation of eleven monuments to: the Gifford family (d.1693, d.1713, d.1745); Anthony Wickham (d.1767); John and Margaret Wickham (d.1783, d.1801); the Wadman family (d.1884, d.1904); Margaret Jackson, Samuel Jackson Dodington and William Manning Dodington (d.1799, d.1813, d.1853); George and George Dodington (d.1757, d.1762); Martha Wickham (d.1737); Hill Dawe Wickham and Janet Anna Jane Wickham (d.1874, d.1883); the Spencer family (d.1774, d.1794, d.1809, d.1823 ); the Bailward family (d.1842, d.1868, d.1913, d.1946); and Rev Thomas Whalley Wickham and his wife Mary (d.1855, d.1867)	(Diocese of Bath and Wells)	£4,000
<b>South Carlton, St John the Baptist</b> Conservation of tomb of Sir John and Lady Monson, by Nicholas Stone, 1625	(Diocese of Lincoln)	£3,500
<b>Southwick, St Mary the Virgin</b> Conservation of monument to George Lynn (d.1758) by Louis Francois Roubiliac	(Diocese of Peterborough)	£2,000
<b>Swanscombe, St Peter and St Paul</b> Conservation of 12th-century font	(Diocese of Rochester)	£3,000
<b>Castlethorpe, St Simon &amp; St Jude</b> Conservation of monument to Sir Thomas Tyrrell c.1671	(Diocese of Oxford)	£7,000
<b>Wingfield, St Andrew</b> Conservation of two monuments: to Michael de la Pole (d.1415) and his wife Katherine, of timber, Purbeck marble and brass; and to John de la Pole (d.1491) and his wife Elizabeth of York, of alabaster	(Diocese of St Edmundsbury and Ipswich)	£6,914



### ***Grants from the Radcliffe Trust***

<b>Anstey, St George</b> Conservation of font, c.1200	(Diocese of St Albans)	£1,500
<b>South Carlton, St John the Baptist</b> Conservation of tomb of Sir John and Lady Monson, by Nicholas Stone, 1625	(Diocese of Lincoln)	£2,500
<b>Southwick, St Mary the Virgin</b> Conservation of monument to George Lynn (d.1758) by Louis Francois Roubiliac	(Diocese of Peterborough)	£1,000
<b>Godmersham, St Lawrence the Martyr</b> Conservation of 12th-century bas-relief Purbeck slab depicting a seated archbishop, possibly Thomas a Becket	(Diocese of Canterbury)	£2,000
<b>Wingfield, St Andrew</b> Conservation of monument to Michael de la Pole (d.1415) and his wife Katherine, of timber, Purbeck marble and brass, and Monument to John de la Pole (d.1491) and his wife Elizabeth of York, of alabaster	(Diocese of St Edmundsbury and Ipswich)	£3,000

### ***Grants from the Gunnis Fund***

<b>Arlingham, St Mary the Virgin</b> Conservation of three wall monuments to: John Yate, 1758; Charles Yate, 1738; and Revd Thomas Hodges, 1784	(Diocese of Gloucester)	£1,250
--	-------------------------	--------

### ***Grants from the Founder's Fund***

<b>Aldworth, St Mary the Virgin</b> Conservation of bas-relief polychromed plaster reredos (1930-36) by Margaret Watson (b.1912), the vicar's daughter	(Diocese of Oxford)	£2,500
---	---------------------	--------

---

<b>Total</b>		<b>£49,414</b>
--------------	--	----------------



**Anstey, St George (St Albans)**

A £2,500 grant was awarded for the conservation of this rare early 13<sup>th</sup>-century font, depicting the rare pagan motifs to each corner of the square bowl, of mermen holding their bifurcated tails.

*Image courtesy of Skillington Workshop Ltd*

## Grants for the conservation of organs

### *Grants from the Pilgrim Trust*

<b>Boughton Aluph, All Saints</b> Conservation of organ, J. Connacher, 1912	(Diocese of Canterbury)	£2,000
<b>Cloford, The Blessed Virgin Mary</b> Conservation of organ, T.C Bates, London, c.1840s	(Diocese of Bath and Wells)	£3,500
<b>Highcliffe, St Mark</b> Conservation of organ, Norman Bros and Beard, 1894	(Diocese of Winchester)	£4,000
<b>Irton, St Paul</b> Conservation of organ, John Nicholson, Worcester 1874 (Grade II listed)	(Diocese of Carlisle)	£9,000
<b>Minchinhampton, Holy Trinity</b> Conservation of organ, Nicholson & Lord, 1887	(Diocese of Gloucester)	£4,000
<b>Chedzoy, The Blessed Virgin Mary</b> Conservation of organ, W.G. Vowles of Bristol, 1900	(Diocese of Bath and Wells)	£3,500
<b>Gilling East, Holy Cross</b> Conservation of organ, Forster and Andrews of Hull, 1883	(Diocese of York)	£6000
<b>Welford, St Mary the Virgin</b> Conservation of organ, Wordsworth & Maskell, 1875, rebuilt by Taylor of Leicester, 1904 and J.W. Walker & Sons, 1963	(Diocese of Peterborough)	£3,000
<b>Wroxton, All Saints</b> Conservation of organ, J. Halmshaw & Sons of Birmingham, 1879	(Diocese of Oxford)	£6,000

---

<b>Total</b>		<b>£41,000</b>
--------------	--	----------------





### **Cloford, The Blessed Virgin Mary (Diocese of Bath & Wells)**

A £3,500 grant was awarded towards the conservation of the organ by T.C Bates (London, c.1840), a maker of small church, chamber and barrel organs.

*Images courtesy of Dominic Gwynn of Martin Goetze & Dominic Gwynn Ltd*

## Grants for the conservation of paintings

### *Grants from the Pilgrim Trust*

<b>Colchester, St James the Great</b> Conservation of easel painting 'Adoration of the Shepherds' (1778) by George Carter	(Diocese of Chelmsford)	£6,000
<b>Goudhurst, St Mary the Virgin</b> Conservation of wooden tomb effigies of Sir Alexander Culpepper (d.1541) and his second wife, Dame Constance Culpepper (d.1542)	(Diocese of Canterbury)	£3,000
<b>Tiverton, St Peter</b> Conservation of four 17th-18th century portraits: Rev. John Newte (1656-1716) attributed to Thomas Forster; James Graham, 1st Marquess of Montrose (1612-50); Thomas Wentworth, 1st Earl of Strafford 1593-1641) after van Dyck; Archbishop William Laud (1573-1645) after van Dyck	(Diocese of Exeter)	£3,000
<b>Wormley, St Laurence</b> Conservation of 16th-century easel painting 'The Last Supper' attributed to Jacopo Bassano	(Diocese of St Albans)	£2,000

### *Grants from the Radcliffe Trust*

<b>Goudhurst, St Mary the Virgin</b> Conservation of wooden tomb effigies of Sir Alexander Culpepper (d.1541) and his second wife, Dame Constance Culpepper (d.1542)	(Diocese of Canterbury)	£3,000
<b>Wormley, St Laurence</b> Conservation of 16th-century easel painting 'The Last Supper' attributed to Jacopo Bassano	(Diocese of St Albans)	£2,000

---

<b>Total</b>	<b>£19,000</b>
--------------	----------------

#### *Facing page:*

#### **Above, and detail right: Wormley, St Laurence (Diocese of St Albans)**

A grant of £4,000 was awarded for the conservation of the early 16th-century easel painting of The Last Supper, attributed to Jacopo Bassano. The painting was given to the church by the great collector Sir Abraham Hume in 1797.

*Images courtesy of Polly Saltmarsh ACR*

#### **Bottom left: Tiverton, St Peter (Diocese of Exeter)**

A grant of £3,000 was awarded for the conservation of a group of four 17th- and 18th-century portraits held in the Newte Library, including the portrait of James Graham, Marquess of Montrose. (1612-1650), a copy after van Dyck.

*Image courtesy of Alison Smith ACR*







## Grants for the conservation of stained glass

### *Grants from the Pilgrim Trust*

<b>Dudley, St Thomas and St Luke</b> Conservation of east window, 'The Ascension of Christ' by Joseph Backler, 1821	(Diocese of Worcester)	£8,000
<b>Hartpury, St Mary the Virgin</b> Conservation of nIV containing fragments of medieval glass	(Diocese of Gloucester)	£2,000
<b>Morley, St Matthew</b> Conservation of 14-15th-century glass in sII, nII, nIII, nIV from Dale Abbey, dissolved 1539	(Diocese of Derby)	£5,000
<b>North Mymms, St Mary the Virgin</b> Conservation of 15th- and 17th-century glass in nIII, nIV	(Diocese of St Albans)	£5,000

### *Grants from the Radcliffe Trust*

<b>Morley, St Matthew</b> Conservation of 14-15th-century glass in sII, nII, nIII, nIV from Dale Abbey, dissolved 1539	(Diocese of Derby)	£5,000
---	--------------------	--------

**Total**

**£25,000**



#### **Morley, St Matthew (Diocese of Derby)**

A grant of £10,000 was awarded for the conservation of the outstanding 14th- and 15th-century stained glass at Morley. The windows, including the masonry, glass, and ferramenta, are believed to have come from the cloister of Dale Abbey when it was dissolved in 1539. *Images courtesy of Jim Budd ACR*

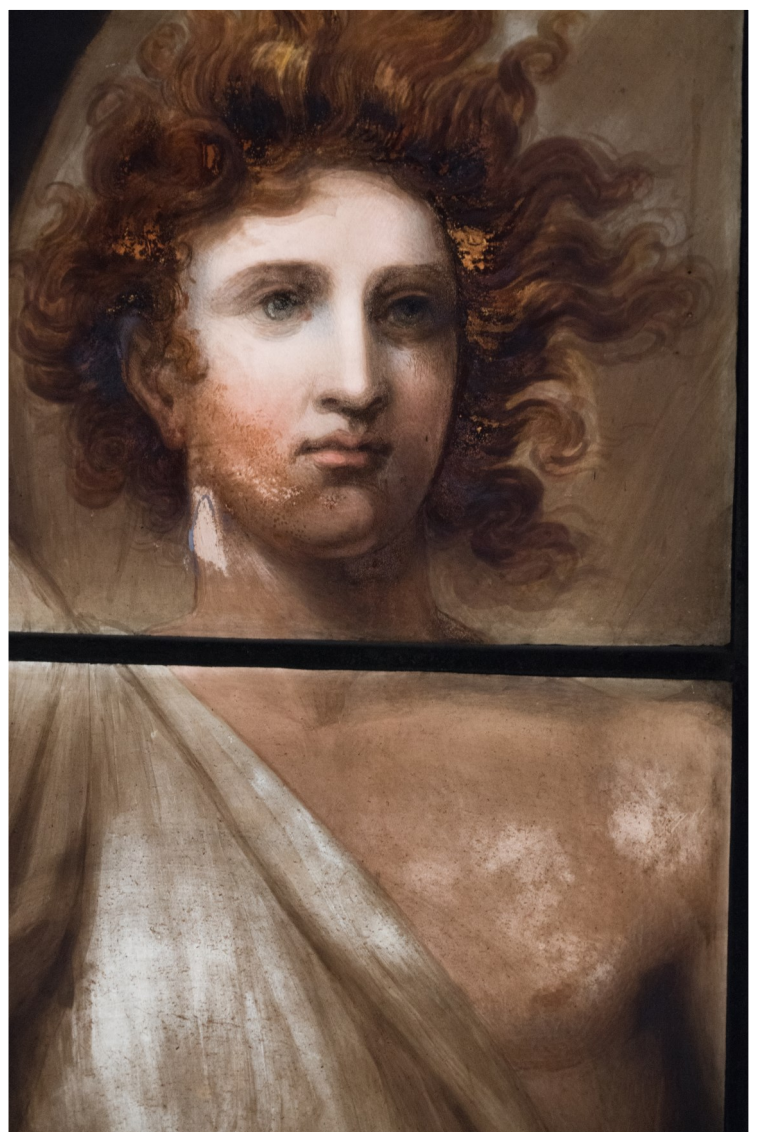




**Dudley, St Thomas and St Luke  
(Diocese of Worcester)**

A grant of £8,000 was awarded for the conservation of the east window, *The Ascension of Christ* by Joseph Backler, 1821. It is painted in enamels on large rectangular panes of clear glass on a cast iron framework. It is a fine example of 'pictorial' Georgian stained glass, possibly based on a design by the artist Benjamin West.

*Images courtesy of Jim Budd ACR*





## Grants for the conservation of textiles

<i>Grants from the Pilgrim Trust</i>		
<b>Putney, All Saints</b> Decorative roundel, 1890s	(Diocese of London)	£2,000
<b>Total</b>		<b>£2,000</b>

## Grants for the conservation of wall paintings

<i>Grants from the Pilgrim Trust</i>		
<b>Bradford on Avon, Christchurch</b> Conservation of Burlison & Grylls wall paintings on the west, south and north nave walls (1880s)	(Diocese of Salisbury)	£4,000
<b>Castleton, St Edmund</b> Conservation of fragments of medieval wall paintings	(Diocese of Derby)	£3,000
<b>Latimer, St Mary Magdalene</b> Conservation of chancel arch wall painting of c.1900 showing two angels flanking an unadorned cross (artist unknown)	(Diocese of Oxford)	£3,000
<b>Skelbrooke, St Michael and All Angels</b> Conservation of Victorian wall and ceiling paintings in the Chantry Chapel c.1872	(Diocese of Sheffield)	£4,668
<b>Thornbury, St Mary</b> Conservation of fragment of medieval wall painting	(Diocese of Gloucester)	£1,000
<b>Upper Tooting, Holy Trinity</b> Conservation of five early 20th-century wall paintings attributed to a parishioner, Richard Castle	(Diocese of Southwark)	£3,000
<b>Total</b>		<b>£18,668</b>





**Latimer, St Mary Magdalene (Diocese of Oxford)**

A £3,000 grant was awarded towards the conservation of the sanctuary arch wall painting of c.1900 showing two angels flanking an unadorned cross (artist unknown), made using a combination of wall painting and *marouflage* (applied canvas) techniques.

*Images courtesy of Rickerby & Shekede*



# Grants for the conservation of wooden objects

<i>Grants from the Pilgrim Trust</i>		
<b>Dulas, St Michael</b> Conservation of 14th-century dugout chest	(Diocese of Hereford)	£2,000
<b>Hartpur, St Mary the Virgin</b> Conservation of 14th-century dugout chest and 16th-century dugout chest	(Diocese of Gloucester)	£3,000
<b>Total</b>		<b>£5000</b>



**Top: Dulas, St Michael (Diocese of Hereford)**

A £2,000 grant was awarded for the 14th-century chest.

**Bottom: Hartpur, St Mary the Virgin (Diocese of Gloucester)**

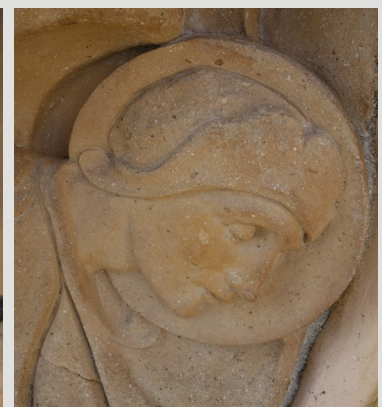
A £3,000 grant was awarded for two medieval chests, including this iron-bound elm 'dugout' chest, likely to date from the 14th century. Dugout chests are made by hollowing out a single tree trunk.

*Images courtesy of Rachel Sycamore of Sycamore Restoration, Ledbury*



## Women church artists of the 18th-20th centuries

Over the last few years, several grants have been awarded for conservation reports for artworks by unknown women artists dating from the 18th to 20th centuries. These have included (clockwise from top left): the wall paintings by Kitty Milroy at Upper Hale, St Mark, c.1915 (Diocese of Guildford); the reredos by Margaret Watson, the vicar's daughter, at Aldworth, c.1930 (Diocese of Oxford); the ceramic gravemarker by Mary Seton Watts at Meonstoke, St Andrew, 1920 (Diocese of Portsmouth); the painted organ case by Miss Maurice at Great Chalfield, All Saints, c.1915 (Diocese of Salisbury); the painted memorial boards by Elizabeth Creed, 1722, one of them dedicated to her relative John Dryden, at Titchmarsh, St Mary (Diocese of Peterborough); and the stained glass by Emily Payne Frankland (1891) and Lady Louisa Frankland-Russell (c.1850) at Thirkleby, All Saints (Diocese of York).



*Clockwise from top left, images courtesy of Rickerby & Shekede, Peter Martindale, Angela Peagram, Peter Martindale, Polly Saltmarsh, and Alison Gilchrist.*



## Grants for conservation reports

### *Grants from the Pilgrim Trust*

#### **Amersham, St Mary the Virgin**

Conservation report on early 17th-century east window, possibly by Abraham Van Linge

(Diocese of Oxford)

£350

#### **Ampney Crucis, The Holy Rood**

Conservation report on nine 18th- and 19th-century churchyard tombs (seven Grade II listed) and a late 14th/early 15th-century cross (Grade I listed)

(Diocese of Gloucester)

£600

#### **Ashby de la Zouch, St Helen**

Conservation report on various monuments, including incised alabaster slab commemorating Robert Nundy (d.1526) and his two wives, monument to the 2nd Earl of Huntingdon (d.1561) and his wife, and monument to the 9th Earl of Huntingdon (d.1746)

(Diocese of Leicester)

£1,800

#### **Audlem, St James the Great**

Conservation report on 1736 wooden bellframe coeval with ring of six maiden bells by Abel Rudhall

(Diocese of Chester)

£600

#### **Barton, St Peter**

Conservation report on 14th-century wall paintings

(Diocese of Ely)

£1,200



#### **Ampney Crucis, The Holy Rood** (Diocese of Gloucester)

Monument to Robert Flux. A grant of £600 was awarded towards a conservation report on a group of churchyard table top tombs.

*Images courtesy of Graham O'Hare*



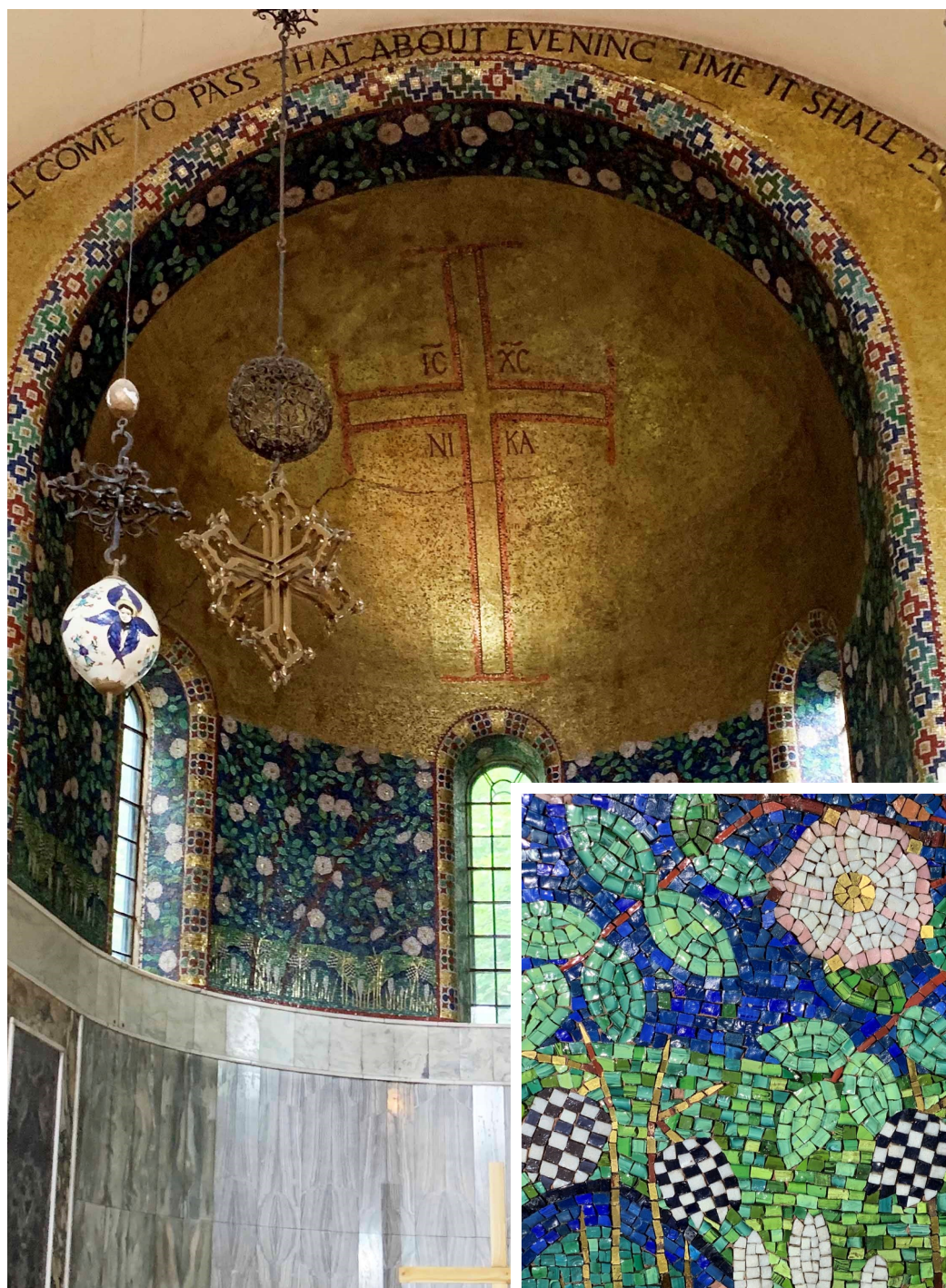
<b>Beechingstoke, St Stephen</b> Conservation report on churchyard tomb of Edward Caulfield, rector, and wife, d.1841 (Grade II listed)	(Diocese of Salisbury)	£600
<b>Brighton, St Bartholomew</b> Conservation report on baldacchino designed by Henry Wilson and erected 1899-1900	(Diocese of Chichester)	£2,000
<b>Claxby, St Mary</b> Conservation report on late 19th-century panel painting 'The Annunciation' by Charles Edgar Buckeridge	(Diocese of Lincoln)	£350
<b>Clyst St Lawrence, St Lawrence</b> Conservation report on 15th-16th century chancel arch wall paintings	(Diocese of Exeter)	£600
<b>Coatham, Christ Church</b> Conservation report on stained glass windows by Wailes of Newcastle, 1865	(Diocese of York)	£350
<b>Colmworth, St Denys</b> Conservation report on monument to Sir William Dyer and family, 1641	(Diocese of St Albans)	£300
<b>Driffield, St Mary</b> Conservation report on two windows by Alexander Gibbs, 1865	(Diocese of Gloucester)	£200



**Clyst St Lawrence, St Lawrence (Diocese of Exeter)**  
Report on wall paintings discovered during major building repairs to the chancel arch. *Images courtesy of McNeillage Conservation*



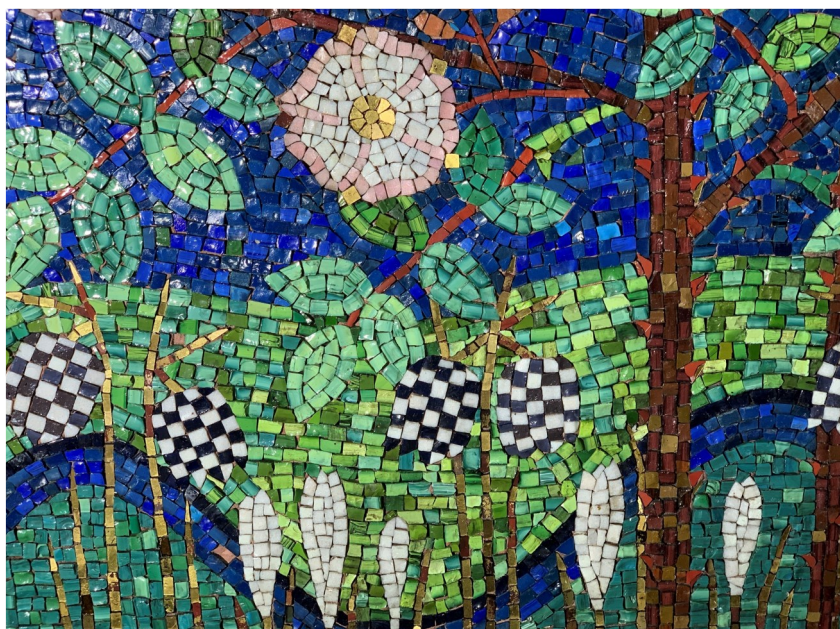
<b>Dulas, St Michael</b> Conservation report on medieval dugout chest	(Diocese of Hereford)	£250
<b>Girton, St Andrew</b> Conservation report on George III Royal Coat of Arms	(Diocese of Ely)	£200
<b>Great Harrowden, All Saints</b> Conservation report on chancel arch 'Doom' painting	(Diocese of Peterborough)	£1,400
<b>Hartpury, St Mary the Virgin</b> Building Environmental Performance Assessment	(Diocese of Gloucester)	£1,500



**Lower Kingswood,  
The Wisdom of God  
(Diocese of Southwark)**

£1,900 was awarded towards a condition survey and structural engineer's report on the late 19th-century apse mosaics by Powell & Sons.

*Images courtesy of Arte Conservation*



<b>Haslingfield, All Saints</b> Building Environmental Performance Assessment	(Diocese of Ely)	£1,500
<b>Hethel, All Saints</b> Conservation report on brass plaques in Branthwayt family mausoleum (18th-19th century)	(Diocese of Norwich)	£400
<b>How Caple, St Andrew w St Mary</b> Conservation report on chancel screen and carved William III Royal Coat of Arms	(Diocese of Hereford)	£650
<b>Lanteglos, St Julitta</b> Conservation report on windows containing 15th-century stained glass	(Diocese of Truro)	£350
<b>Lower Kingswood, The Wisdom of God</b> Conservation report on apse mosaics designed by Sidney Barnsley and laid by Messrs Powell of Blackfriars, 1891	(Diocese of Southwark)	£1,900
<b>Madingley, St Mary Magdalene</b> Conservation report on monument to Dame Jane Cotton (d.1692)	(Diocese of Ely)	£900
<b>Meltham Mills, St James</b> Conservation report on 19th-century and early 20th-century stained glass windows	(Diocese of York)	£400
<b>Princes Risborough, St Mary</b> Conservation report on east window by Kempe & Co, 1909	(Diocese of Oxford)	£300
<b>Rattery, The Blessed Virgin Mary</b> Conservation report on medieval door	(Diocese of Exeter)	£350
<b>Rochford, St Michael</b> Conservation report on 'Tree of Life' tympanum	(Diocese of Worcester)	£600
<b>Sawbridgeworth, St Mary the Great</b> Conservation report on canopied tomb chest c.1520; wall monument to George, Viscount Hewitt (d.1689); wall monument to Sir William Hewytt (d.1637) and his wife Elizabeth (d.1646)	(Diocese of St Albans)	£2,500
<b>Sedgley, All Saints</b> Building Environmental Performance Assessment	(Diocese of Worcester)	£1,800
<b>Selby Abbey, The Abbey Church of Our Lord, Our Lady and St Germain</b> Conservation report on north transept windows by Clayton and Bell, c.1887 and TF Curtis, Ward and Hughes of London, 1913	(Diocese of York)	£250
<b>Shabbington, St Mary Magdalene</b> Conservation report 18th-century chest tomb and monument to William Clerke, 1678	(Diocese of Oxford)	£400





**Stowey, St Nicholas and the Blessed Virgin (Diocese of Bath & Wells)**

A £1,000 grant towards a conservation report, and a £2,000 grant towards environmental monitoring, were awarded to this church, containing a wall painting scheme (1900-1915) by Henry Strachey (1863–1940), a cousin of Lytton Strachey and Duncan Grant, members of the Bloomsbury Group of writers, artists, and intellectuals. An influential member of the Scout movement, Strachey is recognised as an accomplished portrait and landscape painter, art critic and art historian, and writer and musician of the late 19th and early 20th century, but is less well-known as a mural painter.

*Images courtesy of Rickerby & Shekede*

<b>Stanton Fitzwarren, St Leonard</b> Conservation report on carved Elizabeth I Royal Coat of Arms	(Diocese of Bristol)	£750
<b>Stogumber, St Mary</b> Structural engineer's report on monument to Sir George Sydenham (d.1596)	(Diocese of Bath and Wells)	£500
<b>Stowey, St Nicholas and the Blessed Virgin</b> Conservation report on 20th century murals by Henry Strachey and James I Royal Coat of Arms	(Diocese of Bath and Wells)	£1,000
<b>Stowey, St Nicholas and the Blessed Virgin</b> Environmental monitoring and assessment: the Henry Strachey murals and James I Royal Coat of Arms	(Diocese of Bath and Wells)	£2,000
<b>Titchfield, St Peter</b> Building Environmental Performance Assessment	(Diocese of Portsmouth)	£1,800
<b>Tong, St Bartholomew</b> Conservation report on five late medieval alabaster tombs (dating between 1409-1517) and the Elizabethan Stanley monument, 1632	(Diocese of Lichfield)	£1,500
<b>Whitchurch, All Hallows</b> Conservation report on Commandments Board depicting the fates of those who disobeyed the commandments, 1602	(Diocese of Winchester)	£600
<b>Wigmore, St James</b> Conservation report on group of eight cast iron ledger slabs, 1619-1754 (Grade II listed) at Burrington, St George (Diocese of Herefordshire)	(Diocese of Hereford)	£350
<b>Worcester, St Nicholas and All Saints</b> Conservation report on reredos, painting by Josiah Rushton of the Royal Worcester Porcelain Works, 1867	(Diocese of Worcester)	£500
<b>Wyck Rissington, St Laurence</b> Conservation report on medieval stained glass	(Diocese of Gloucester)	£300
<b>Total</b>		<b>£33,900</b>



# OUR COMMITTEES

## **Bells Committee**

Dr David Thackray (Chair)  
Rachel Arnold  
E John Arthur  
Dickon Love  
Graham Pledger  
Christopher Povey

## **Clocks Committee**

Geoffrey Hunter (Chair)  
Andy Burdon  
Tony Charlesworth  
Rupert Griffin  
Julian Parr  
Keith Scobie-Youngs

## **Organs Committee**

The Ven Canon Robert Cooper (Chair)  
Stephen Allis  
Dr Christopher Batchelor  
Dominic Gwynn  
Michael Latham  
Adrian Mumford  
Nigel Stark  
Dr Lance Whitehead  
Richard Young

## **Paintings & Wall Paintings Committee**

Matthew Saunders (Chair)  
Sophie Godfraind  
Lisa Shekede  
Sophie Stewart  
Rachel Turnbull  
Dr Lucy Wrapson

## **Sculpture & Furnishings Committee**

John Burton (Chair)  
Dr Nicola Coldstream  
Alex Coode  
Nicole Gilroy  
Jürgen Huber  
Heather Newton  
Vanessa Simeoni  
Katy Smith  
Eleanor Townsend  
Clara Willett  
Dr Kelcey Wilson-Lee

## **Stained Glass Committee**

Marcus Chantrey (Chair)  
Jill Channer  
Steve Clare  
Dr Martin Crampin  
Tobit Curteis  
Dr Alison Gilchrist  
Nick Teed

# KEY CONTACTS

## **Emily Gee**

Director

churchcare@churchofengland.org

02078981863

## **Janet Berry**

Head of Conservation

janet.berry@churchofengland.org

02078981889

## **John Webster**

Conservation Grants Administrator

john.webster@churchofengland.org

020 7898 1872

## **Tracy Manning**

Church Buildings Officer (Conservation)

tracy.manning@churchofengland.org

020 7898 1833

### ***Back cover: Stowey, St Nicholas and the Blessed Virgin (Diocese of Bath & Wells)***

Grants towards conservation reports were awarded to this church, containing a wall painting scheme (1900-1915) by Henry Strachey (1863–1940).

*Image courtesy of Rickerby & Shekede*





Cathedral & Church Buildings Division  
Church House, Great Smith Street,  
London SW1P 3AZ

[churchcare@churchofengland.org](mailto:churchcare@churchofengland.org)

[www.churchofengland.org/resources/churchcare](http://www.churchofengland.org/resources/churchcare)