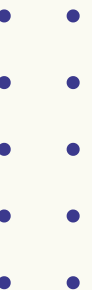




# St George's Church, Littleport



The Church of England  
Diocese of Ely



## About Ely Diocese

Ely Diocese covers an area of 1,507 square miles (3,900 sq km). It has a population of 705,000 and comprises 209 benefices, 303 parishes and 335 churches with 104 stipendiary parochial clergy.

The diocese covers an area roughly similar to the county of Cambridgeshire, but also includes some parts of western Norfolk, Peterborough, Essex and Bedfordshire.

As a Diocese, our Ely 2025 vision commits us to:

- **Engage** fully and courageously with the needs of our communities, locally and globally.
- **Grow** God's church by finding disciples and nurturing leaders.
- **Deepen** our commitment to God through word, worship and prayer.

More information can be found here: [Strategy - elydiocese.org](https://www.elydiocese.org)

**We praise and thank you, God of the journey,  
For all your gifts to us in the past.**

**We look to you as fellow-traveller and faithful companion on the way  
ahead.**

**Shelter and protect us from all harm and anxiety;**

**Give us grace to let go of all that holds us back;**

**And grant us courage to meet the new life you have promised us**

**In Jesus Christ our Lord.**

*Amen*



## About Littleport

Littleport has a population of 9,839 people (2022 Census data) and with new housing is expected to grow to at least 12,000 in the next 5 years. It is classed as a town and has a Town Council. The large parish of Littleport comprises the hamlets of Little Ouse (previously St John's) to the east, and St Matthew's to the west, both converted into private dwellings. Littleport is around 5 miles from the Cathedral city of Ely and sits close to the neighbouring borders of Suffolk, Norfolk and Fenland. Littleport also has a significant and increasing number of young families and individuals who live in poverty. There is a high degree of deprivation, inequalities in educational attainment and some anti-social behaviour in Littleport.

## About St George's

St George's Church is a small, welcoming church committed to nurturing and encouraging people through a range of services and other events. We are also passionate about reaching out to love and care for those who are in need and searching for God. Our hope and prayer is that many discover the good news of Jesus Christ and come to know him personally. Our worship and theological tradition is broadly evangelical. We are passionate about becoming a church for all ages, reflecting the diversity of Littleport and recognise to do this we need to engage with children, young people and whole families. We have good relationships with the schools, churches and community groups in the town and have a faithful ministry team and PCC. It's an exciting time to join St George's as we embark on a new journey and vision together.



## Children and Young People

There are two primary schools in Littleport: Littleport Community Primary School and Millfield Primary School. There are nursery and pre-schools attached to both Primary schools in Littleport as well as a non-affiliated pre-school sited near the secondary school.

There is a secondary school - VISTA Academy - which opened in 2017. On the same site, there is a school for children with additional needs - Highfield Littleport Academy - which caters for children of ages 2-19 with SEN.

We were fortunate to have a Children's and Families' Missioner up until 2023 (who moved on to be ordained) who worked hard with former Vicars and Lay Ministers to establish excellent links with the schools. We therefore have good relationships with the schools and other churches in Littleport and are able to offer weekly '**Pop up Church**' at both Primary Schools and more recently at VISTA, during lunch hours. There is a good interdenominational team offering this. We are also invited to lead assemblies in the schools and support Youth for Christ in **RE lessons** in VISTA.

We are currently exploring Sports ministry with the secondary school and are looking to develop this further to provide a pathway for the young people of Littleport, integrating school, church and community/home (Growing Faith) and hope to be in a position to have a **Sport and Wellbeing Youth Minister** in the future to further this mission and ministry.



Littleport is home to Cornerstone College, ([cornerstone-college.org](http://cornerstone-college.org)), which is, 'a vibrant multi-denominational and multicultural learning family, committed to helping students make the most of their God-given talents.' It is exciting that in Sept 2023, a cohort of 70-80 young people from across the world are due to join the college. The Director of the college is keen to work with St George's in supporting the young people, as well as ensuring the students are a blessing in the community.

A curacy at St George's would give excellent opportunities to develop experience in schools and mission with children and young people, especially in community (non-faith-based settings). We also have a small **Junior Church** within our Sunday service, **Messy Church** and two small preschool and parent/carer groups each week.

Littleport has some complex and challenging needs regarding anti-social behaviour, drug taking and other social concerns. It is an interesting context with hidden issues, and there is always something that seems out of the ordinary and demands our attention, but, in fact this is normal to the culture in Littleport and would be part of learning ministerial skills for such a context.

## Fun and Games at St George's

*Left:* A selection of photos from '**Holiday at St G's**' - Summer 2023

*Right:* A parachuting teddy making its way up the Tower - Autumn Fayre 2023



## Opportunities for a Curate

Below gives an overview of some of the wide experience we could offer, but this would always be part of a conversation, to see what areas of interest and training is required for a particular person.

- To take a lead in Pioneering a new monastic community which is sent out missionally within Littleport, but could be a hub for the wider area
- To support and contribute to sport and wellbeing ministry
- To be involved in leading / contributing to Faith Exploration/Alpha Courses, Baptism and Parenting Courses, Confirmation Classes, Pastoral Training
- To lead Funerals, Burials of Ashes, Weddings, Baptisms and Thanksgiving Services
- To lead and preach at a range of services from traditional Holy Communion, right through to Messy Church
- To engage creatively with the festivals (secular and Christian) that we celebrate during the course of each year
- To take part in the development of our children and/or young people through groups and events and through our partnership with the schools
- To benefit and help further develop the link we have as hosts of the Littleport Food Hub, St George's Warm Space and links with the community such as the Town Council, over 65's lead (council employed), Community Youth Lead (council employed), Social Prescriber, Youth for Christ and other churches in Littleport
- Opportunity to be involved in ministry within a Care Home setting as well as Home Communion
- Modelling Missional Discipleship



## The ministry team

The ministry team of St George includes the vicar, two churchwardens, PCC, three licensed lay ministers, a retired archdeacon, a retired prison chaplain, and a retired ordained theological college tutor.

A rota is devised quarterly to ensure that responsibility for services are covered appropriately by the ministry team. Currently, the Vicar meets with the Ordained and Lay Ministers bi-monthly to pray, discuss the mission and ministry of the benefice and wider C of E, envision as well as practically deal with the rota. Natalie Andrews, our vicar joined us in March 2023. Natalie and the retired clergy and LLMs have discussed LLF and have a traditional biblical understanding of marriage.



## About the Incumbent

Natalie became vicar at St Georges in March 2023, prior to that, she headed up the National Sport and Wellbeing Project . That role has given her good project manging experience and a wider C of E understanding. It has also helped her to see the potential for sport and wellbeing in revitalisation of the parish and so a curacy at St George's would benefit from her pioneering mindset as well as current wider C of E experience.

As a training incumbent she would draw on all of these experiences to join with a curate to offer a broad and full training opportunity.

Some of the skills that have been nurtured that would be beneficial in a curacy are:

- Team working
- Good communication including voice projection and articulation
- Evangelism (Natalie is a member of the Archbishops' College of Evangelists)
- Organisational and planning skills
- Facilitating meetings and groups
- Mentoring, coaching and listening skills
- Pastoral skills with vulnerable individuals and complex situations
- Vision planning
- Boundary setting
- Pastoral reflection and Spiritual Direction
- Choreography of worship and pastoral offices

***'Be who God has called you to be and you will set the world on fire.'***

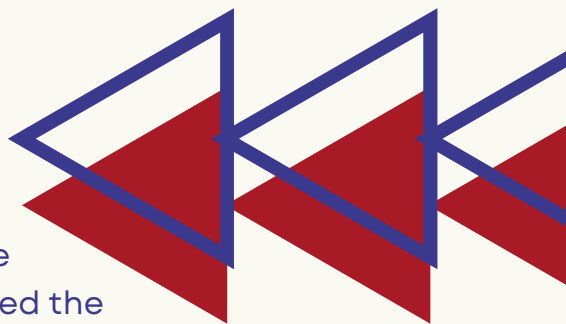
*Catherine of Sienna*



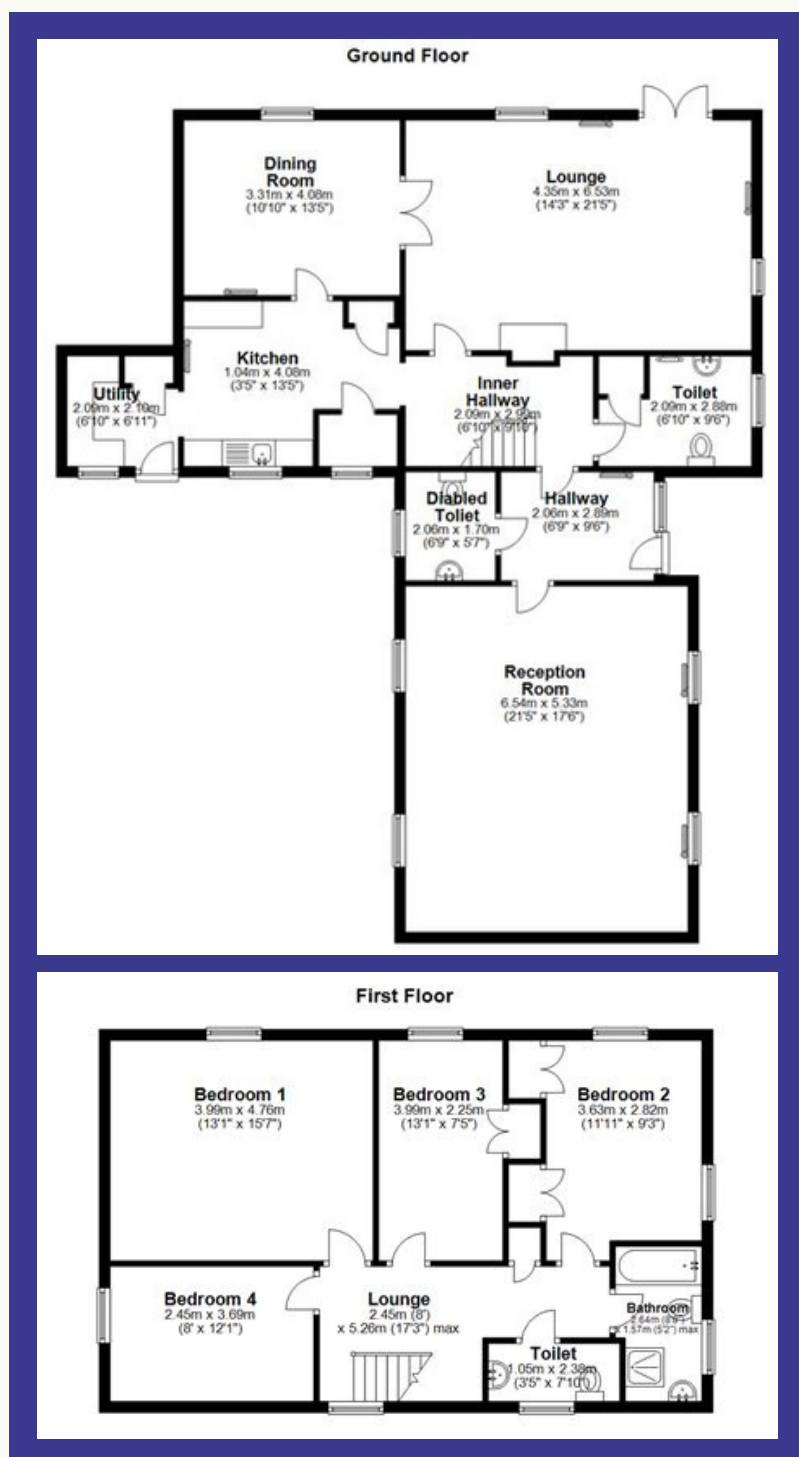


## Housing for a curate

The Vicarage is a 4 bedroom detached property built in 1978 and set back off the road and behind the church in Littleport. The Houses Committee converted the garage into a large study some years ago. There is also a detached garage adjacent to the house.



## Floor plans



## Natalie writes:

People are important to me, I'm an extrovert with introvert tendencies! People describe me as a calm person and say that I have a way of being quietly assertive. I can be serious when needed but enjoy a sense of fun and humour most definitely!

My core values are respect, integrity, fairness and trust, so these would be the values that would underpin the curate-TI relationship

I'm a keen runner and Wild Swimmer and so this plays a part in who I am. I'm married to Richard and we have two older teenage children.

I'm a visionary, evangelical charismatic, new monastic, evangelist/apostle – and so love to build teams that help us to go on a journey to engage with those the church often finds it hard to connect with, but rooted in prayer and love of Jesus!

**To have a further conversation about serving a curacy here, please contact Natalie Andrews on [VicarStGeorgeLittleport@outlook.com](mailto:VicarStGeorgeLittleport@outlook.com).**

