



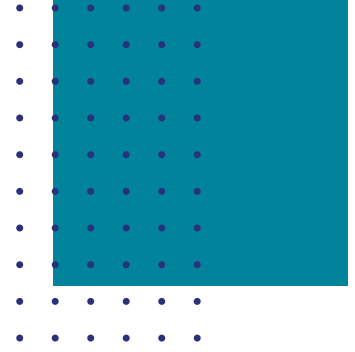
MUSIC FOR GROWING FAITH

*A network by the
Growing Faith Foundation*

2024 session information



TABLE OF CONTENTS



1. An introduction to Growing Faith
2. Growing Faith Networks
3. Network Aims
4. Network Objectives
5. Network Structure
6. Schedule for 2024-2025
7. Network Governance
8. Network Reporting
9. Other Growing Faith networks



THE GROWING FAITH FOUNDATION.

Growing Faith is the movement that exists to put children, young people and families instinctively at the heart of all the mission and ministry of the Church by changing the culture of the Church of England.

It involves churches, schools and households working together to help children, young people and families have life in all its fullness.

The Growing Faith Foundation seeks to benefit children and young people, helping them create the world they want to live in, specifically through the lens of the Christian faith.

Every Diocese has appointed one or more Growing Faith Champions to take forward the Growing Faith mission locally. Nationally, the Foundation is also developing work in four main areas: Networks, Learning Hubs, Programmes and Research.

We hope this brochure encourages you to join the Mental Health and Trauma Awareness network, and inspires you get involved in the Growing Faith movement more broadly.

GROWING FAITH NETWORKS

There are AMAZING people all over the country working for the culture change we long to see. We're passionate about connecting people, and facilitating peer support and collaborative learning.

We offer networks for different people working within and between the school-church-home spheres and we'd love you to join us!



Our networks...

- prioritise the voices of children and young people, and look at all our work through the lens of Growing Faith
- have a shared ownership and focus
- have high quality resourcing and facilitation
- promote long term commitment and creating a movement
- address issues of equality, diversity and inclusion at every stage of their work
- have clear logistics and a focus on specific context and grassroots experience
- create safe spaces; they are highly relational and seek to learn and grow in wisdom, understanding and love.



MUSIC FOR GROWING FAITH: PURPOSE OF THE NETWORK

To encourage, uphold, notice, inspire and build relationships with and between people who work with CYP in musical settings, fostering a peer supportive and collaborative community of learning and sharing. To work together to create a set of recommendations around starting points for discipleship through music.



Sign up here!

AIMS OF THE NETWORK

We hope that:

- We will gather regularly and build long-term, supportive relationships
- We will understand the Growing Faith commitment and how and where we are contributing, and that this knowledge will help us in our work
- We will share our knowledge, experience, resources and skills for the common good of the group, and ultimately the benefit of the children and young people we serve
- We will learn together from experts in the field, and from each other
- We will work increasingly in collaboration to support the spiritual flourishing of children and young people

This network is aligned with the Growing Faith Foundation's values:

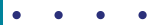
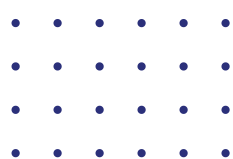
We change the culture for the better

We lead by example

We prioritise relationships

We recognise and embrace the diversity of the body of Christ

We create safe spaces of welcome and belonging



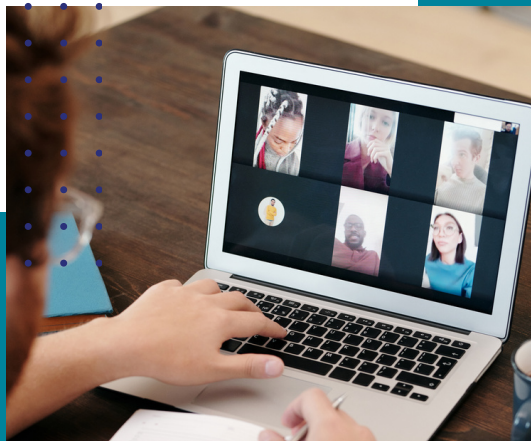
STRUCTURE OF THE NETWORK

An initial phase of 4 online meetings throughout 2024 is proposed. Participants will come to each meeting prepared to contribute to a shared conversation around the Growing Faith intersections with a focus on discipleship opportunities and recommendations, following a three-month period of reflecting, learning, experimenting and collating information. During these meetings participants will pool their learning and develop the shared piece.

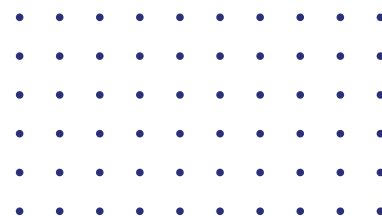
Additional resources:

A peer support directory will be created on the Growing Faith website for people/organisations to be able to easily connect to each other.

Other Growing Faith networks will be opened up to participants of this network to enable them to benefit from the connections and learning on other topics/with specific groups of colleagues.



NETWORK SCHEDULE 2024



Date	Theme
Thurs 21st March 10-11am	Welcome
Mon 1st July 12-1pm	Home
Tues 17th Sept 1:30-2:30pm	School
Mon 9th Dec 10-11am	Church

Following the publication of recommendations in December 2024, it is anticipated that the network will continue to work and grow. The direction this takes will become clearer over the course of the year with an awareness of the many opportunities that might be suitable (research projects, GF Hubs, wider collaborative work within the NCIs and externally, etc).

OTHER CURRENT NETWORKS

Read on to find out more about some of the other Growing Faith Networks.

If you would like any further information, please visit the Growing Faith Foundation website, or contact Hannah Persaud (Growing Faith Networks Lead): hannah.persaud@churchofengland.org



Serving the Local School

A network run in collaboration with dioceses. How can our churches best contribute to the life of the local school(s)? Join a group of people from your diocese who are passionate about church-school connection.



Toddler Leaders and Champions

This network is for people who run toddler groups, as well as leaders in their church. Come and be encouraged, equipped and inspired to see Growing Faith in this precious ministry.



Parachurch Organisations

A big and vibrant network of parachurch colleagues from all over the country, from some of the most well-known national charities through to our amazing small and mighty local organisations. Collaborating to effect culture change together – all welcome!

OTHER CURRENT NETWORKS



Mental Health and Trauma Awareness

A network which platforms the significant expertise and resourcing of colleagues in parachurch organisations and dioceses, combined with the opportunity to consider it all in the light of your own context. A brilliant opportunity to improve the way we value and work with others. Do join us!



Chaplains in Education

Focussing on the most pressing concerns of our chaplains, and the unique role they play in Growing Faith, this network seeks to support and empower colleagues through both national gatherings and small group peer support groups.



Ordinands for Growing Faith

Are you an ordinand? We meet at lunchtime once a month to explore our ministry and studies through the lens of Growing Faith.



The Growing Faith Foundation

Email: growingfaith@churchofengland.org

Or visit: <https://www.churchofengland.org/about/education-and-schools/growing-faith-foundation>